

LXP LENSES FOR CREE XP-E LEDs



- Specially designed for Cree XLAMP XP-E series of LEDs.
- Special care taken to make a uniform white or warm white illumination. Lenses work well with other colors, too.
- Lens material optical grade PMMA. Allows use of high current and temperature conditions
- Best available optical efficiency, more than 90%, with an extremely good cutoff of light
- Fastening to heat sink with a PU foam **adhesive tape** of automotive grade

LENS TYPES

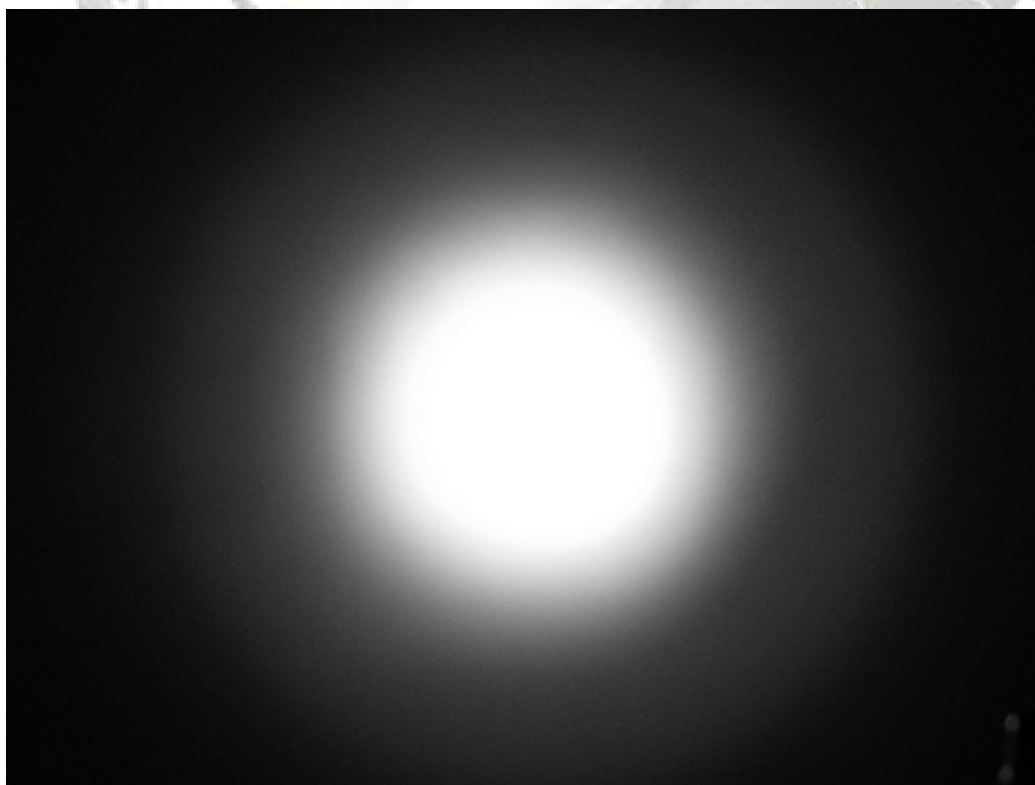
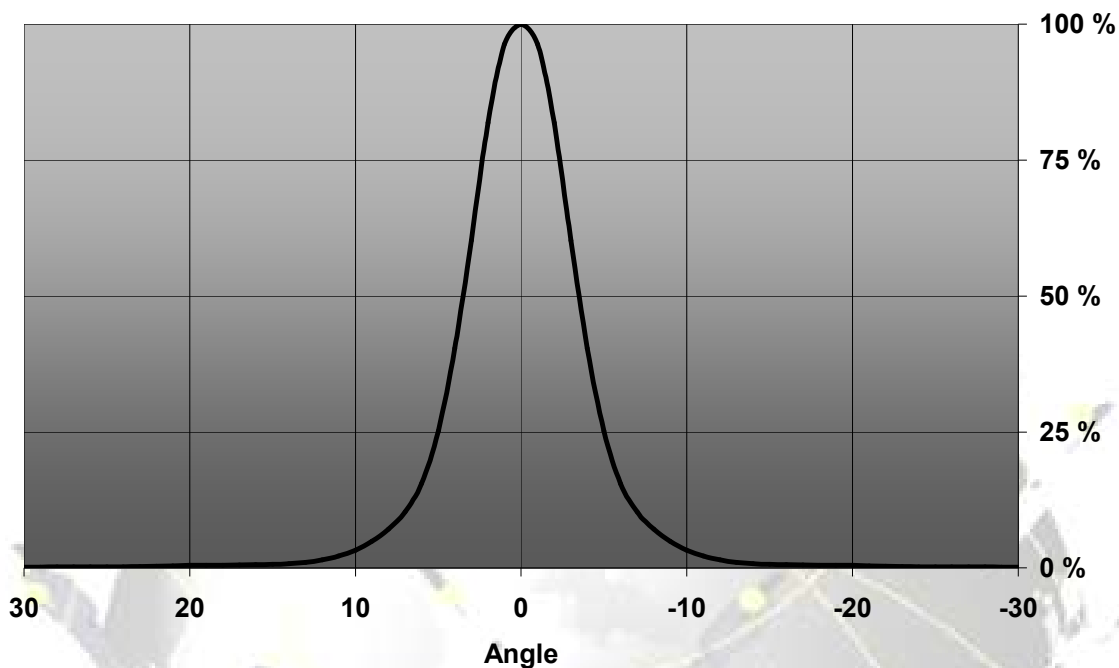
NAME	ORDERING CODE	FWHM Angle
LXP REAL SPOT	FA10661_LXP-RS	±3°
LXP DIFFUSER	FA10663_LXP-D	±6°
LXP MEDIUM	FA10660_LXP-M	±11°
LXP OVAL	FA11116_LXP-O-90	±5° x ±21°
LXP RECTANGULAR	FA10662_LXP-REC	±20° x ±11°
LXP WIDE	FA10832_LXP-W	±23°

EULUMDAT & IES FILES AVAILABLE BY REQUEST

© Ledil Oy – PRELIMINARY - Subject to change without prior notice

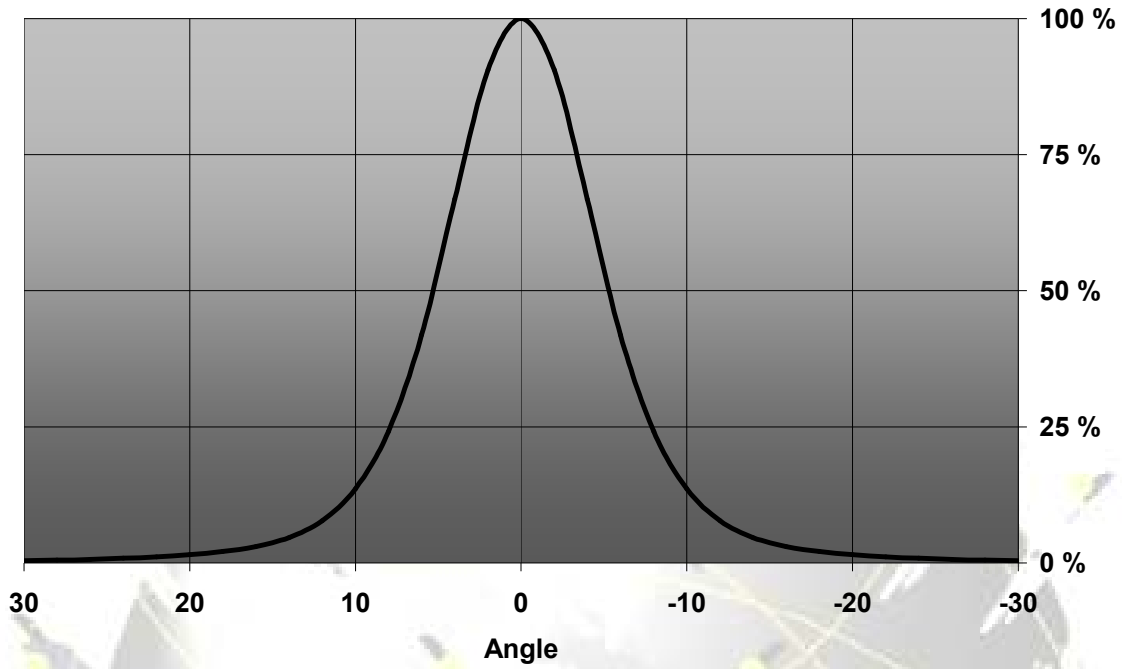
MEASUREMENT DATA

Relative Intensity of LXP-RS



© Ledil Oy – PRELIMINARY - Subject to change without prior notice

Relative Intensity of LXP-D

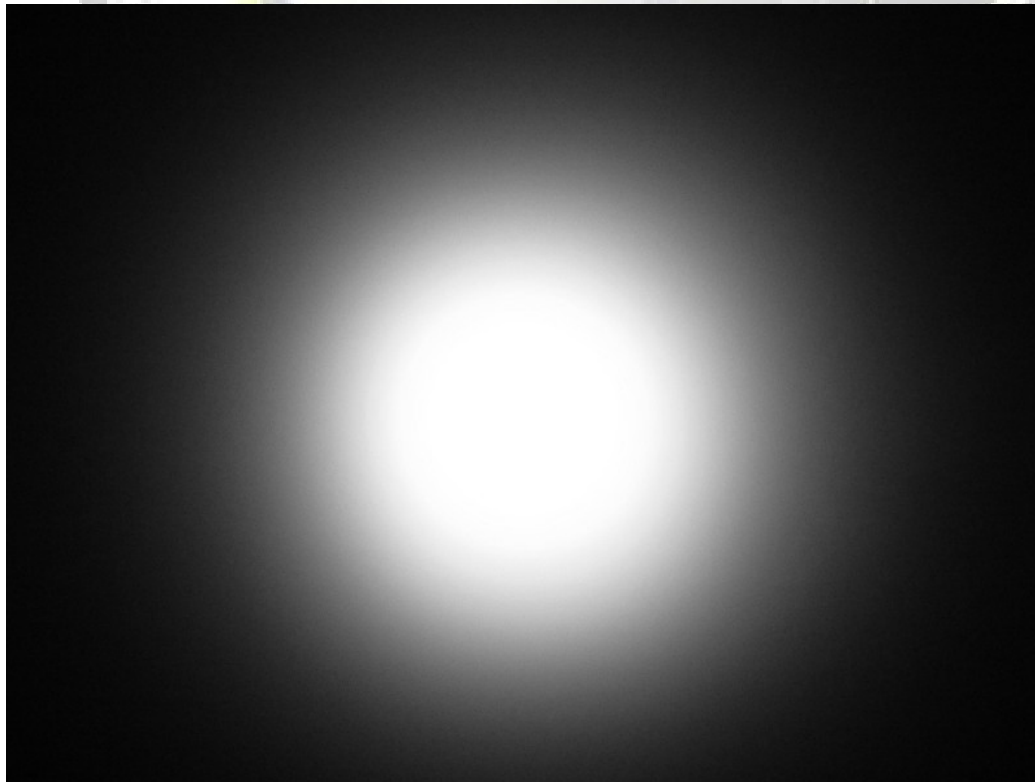
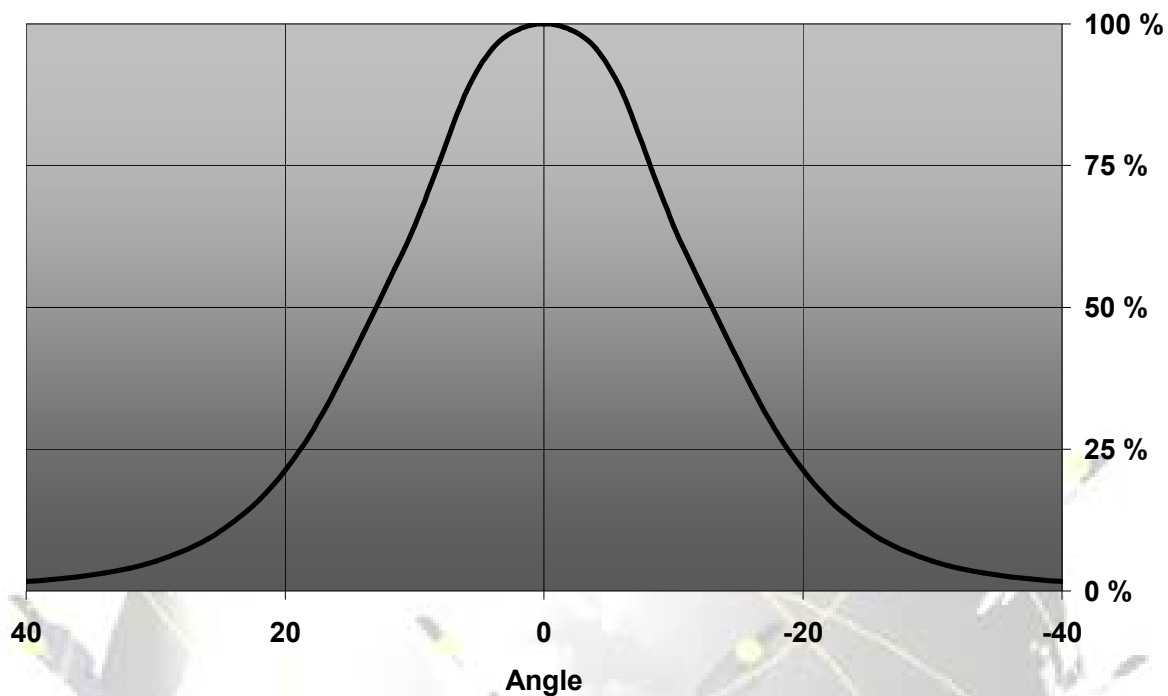


© Ledil Oy – PRELIMINARY - Subject to change without prior notice

Ledil Oy
Tehdaskatu 13
FIN-24100 SALO, Finland

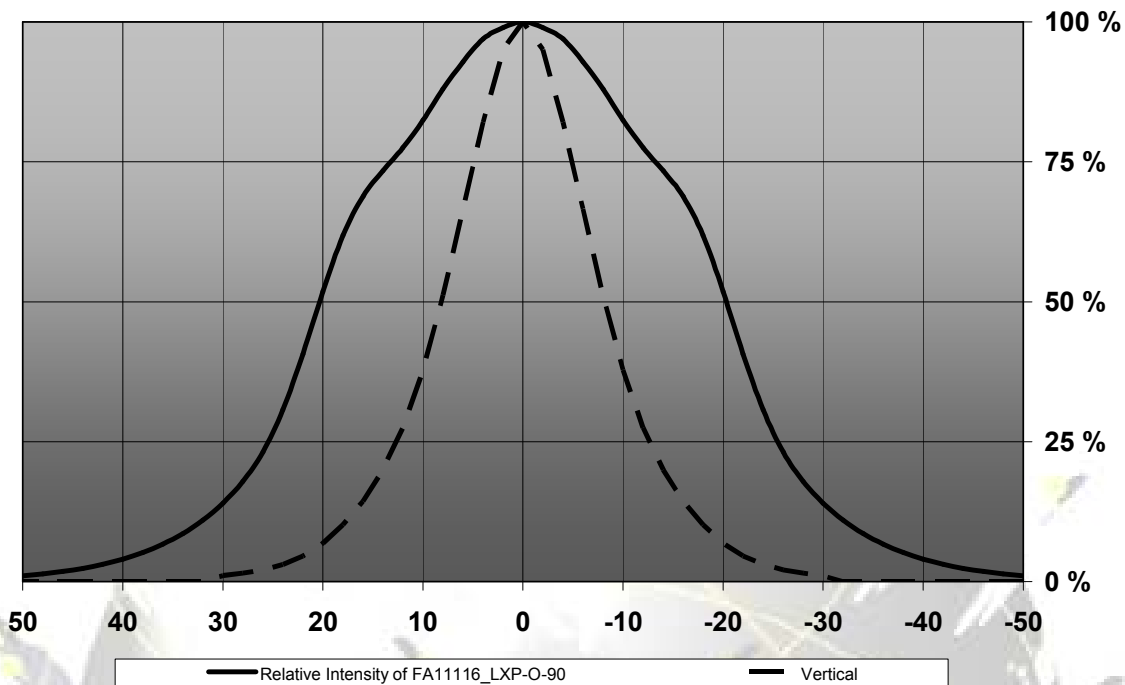
www.ledil.com
email: ledil@ledil.com
FAX: +358-2-733 8001

2010-01-20

Relative Intensity of LXP-M

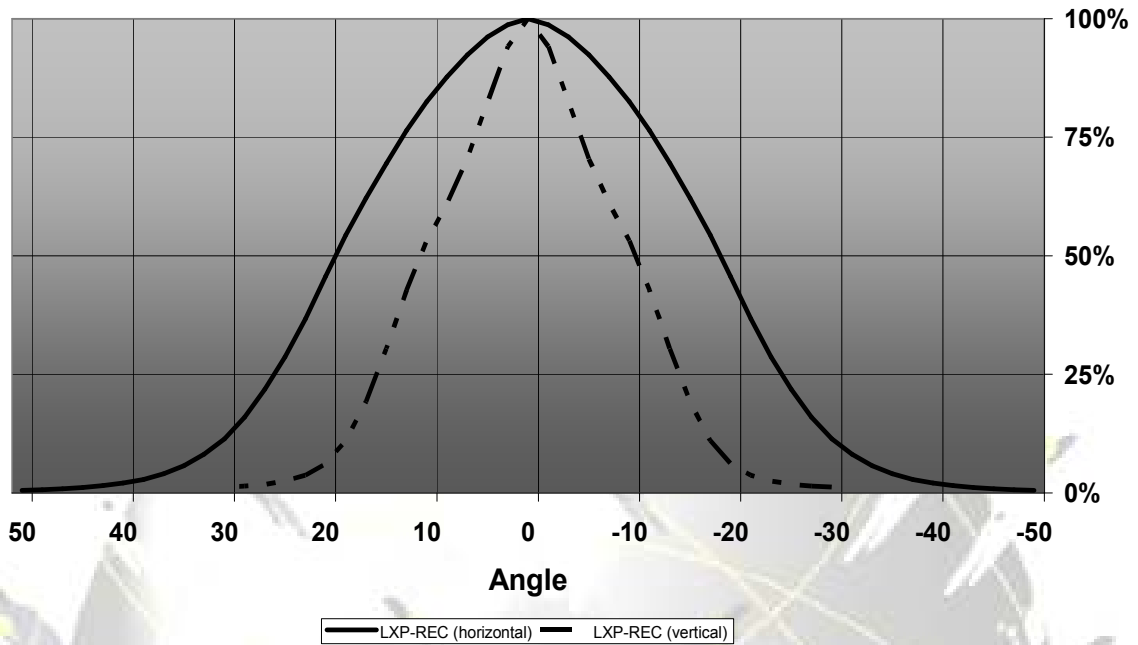
© Ledil Oy – PRELIMINARY - Subject to change without prior notice

Relative Intensity of FA11116_LXP-O-90

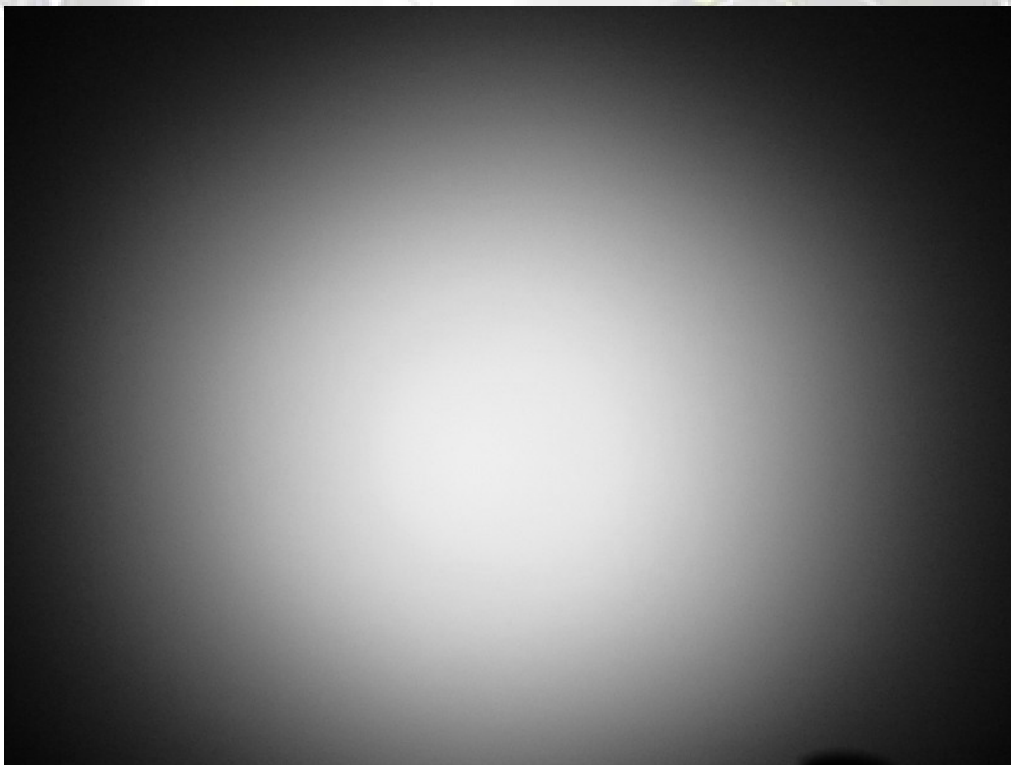
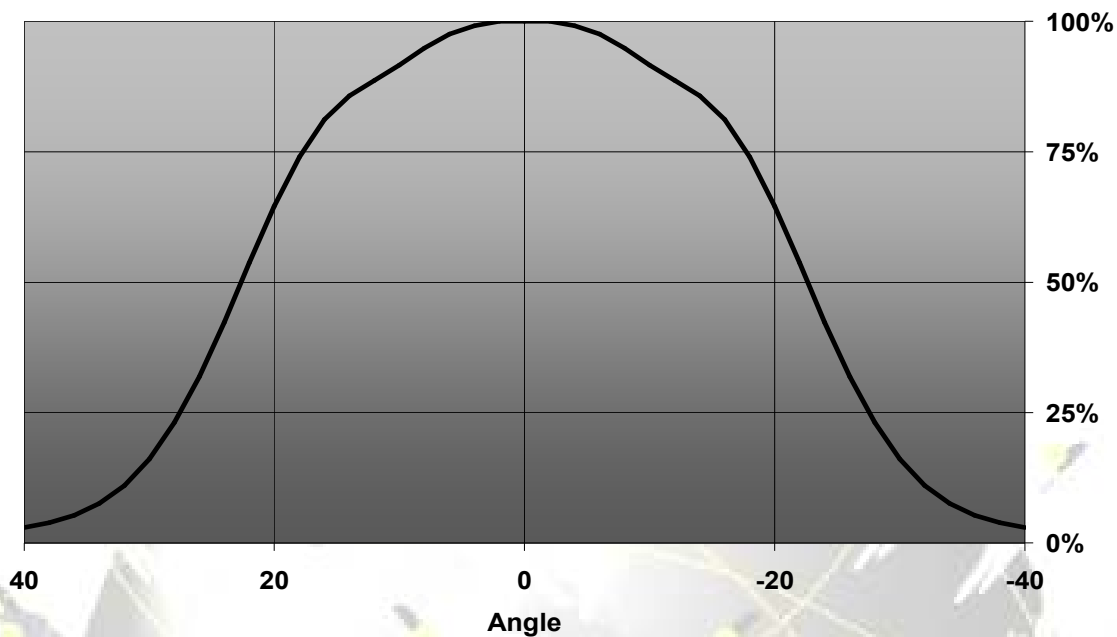


© Ledil Oy – PRELIMINARY - Subject to change without prior notice

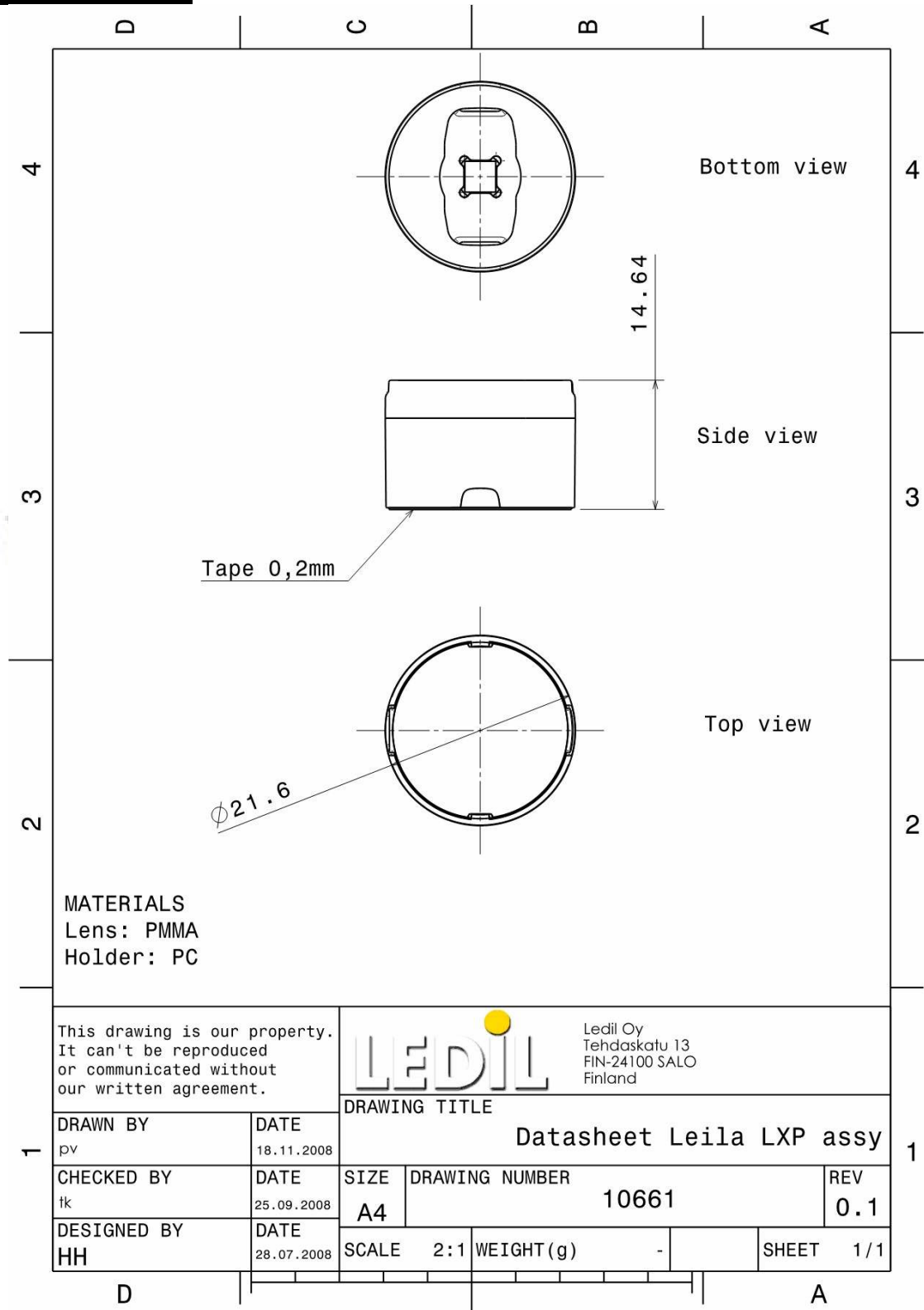
Relative Intensity of FA10662_LXP-REC



Relative Intensity of FA10832_LXP-W



DRAWINGS



© Ledil Oy – PRELIMINARY - Subject to change without prior notice

X-ON Electronics

Largest Supplier of Electrical and Electronic Components

Click to view similar products for [LED Lenses](#) category:

Click to view products by [Ledil](#) manufacturer:

Other Similar products are found below :

[131A-303G](#) [131A-304R](#) [139A-403R](#) [139A-403A](#) [160A-604R](#) [160A-604Y](#) [SMB_200_GTP](#) [SMQ_250_ATP](#) [SMS_172_RTP](#) [SQB_400_ATP](#)
[SSN-LX13049L-CD](#) [SSN-LX18754A](#) [SSN-LX18754C](#) [2817](#) [CLR_301_YTP](#) [CMC_313_ATP](#) [3121](#) [3124](#) [3125](#) [39-30-W03](#) [4344](#) [4623](#)
[4745](#) [4747](#) [3111](#) [3114](#) [3115](#) [3121](#) [3122](#) [3124](#) [3125](#) [4327](#) [4743](#) [4745](#) [4752](#) [4757](#) [SSN-LX690L1-C](#) [SQL_360_YTP](#) [SMQ_250_BTP](#) [3114](#)
[3113](#) [CMS444CTP](#) [1125-227-000](#) [4317](#) [4347](#) [4741](#) [4316](#) [4343](#) [4345](#) [4345](#)