

LC1 LENSES FOR CREE XR-E LEDs



- Specially designed for Cree XLAMP XR-E series of LEDs.
- Special care taken to make a uniform white or warm white illumination.
- Lens material optical grade PMMA with high UV and temperature resistance (105°C/220°F). Allows use of high current and temperature conditions. Holder material ABS.
- Best available optical efficiency, more than 90%, with an extremely good cutoff of light
- Fastening of holder to PCB with appropriate adhesive, e.c. epoxy or polyurethane based. NOTE: DO NOT USE SUPERGLUE.
- Please check fastening details from this link:
(http://www.ledil.com/datasheets/DataSheet_GLUES.pdf)

LENS TYPES

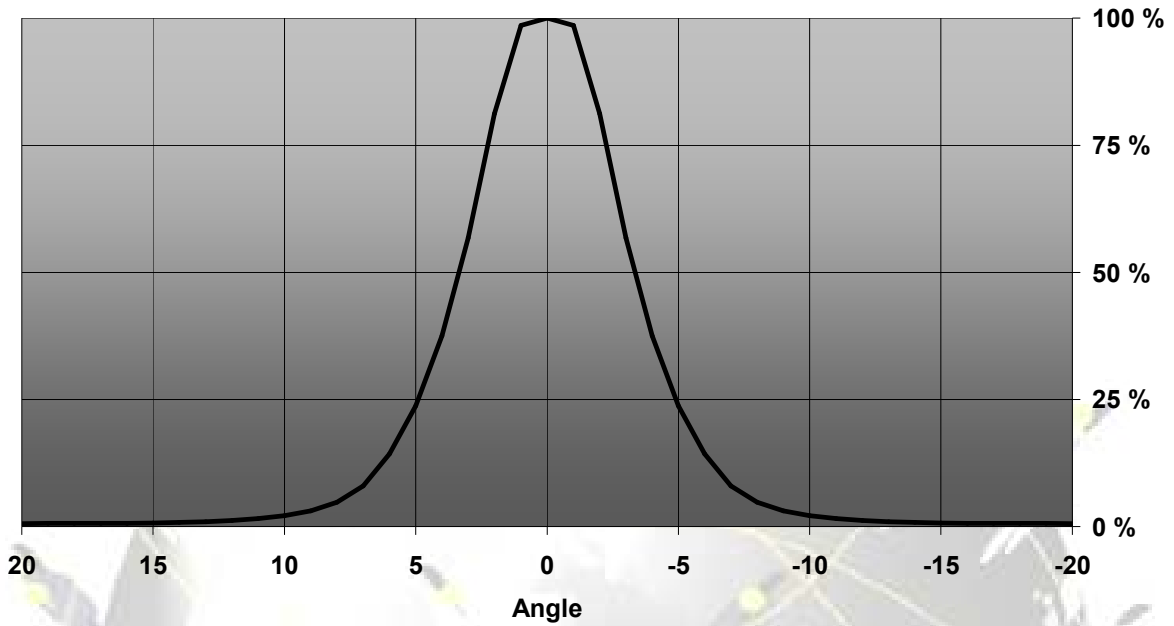
NAME	ORDERING CODE	FWHM Angle
LC1 REAL SPOT	FA10808 LC1-RS	±3°
LC1 DIFFUSER	FA10810 LC1-D	±5°
LC1 MEDIUM /DIFFUSER	FA11372 LC1-MD	±12°
LC1 MEDIUM	FA10807 LC1-M	±14°
LC1 MEDIUM2	FA11459 LC1-M2	Coming soon
LC1 OVAL	FA11104 LC1-O-90	±5° x ±21°
LC1 RECTANGULAR	FA10809 LC1-REC	±21° x ±11°

NOTE: DELIVERED UNASSEMBLED

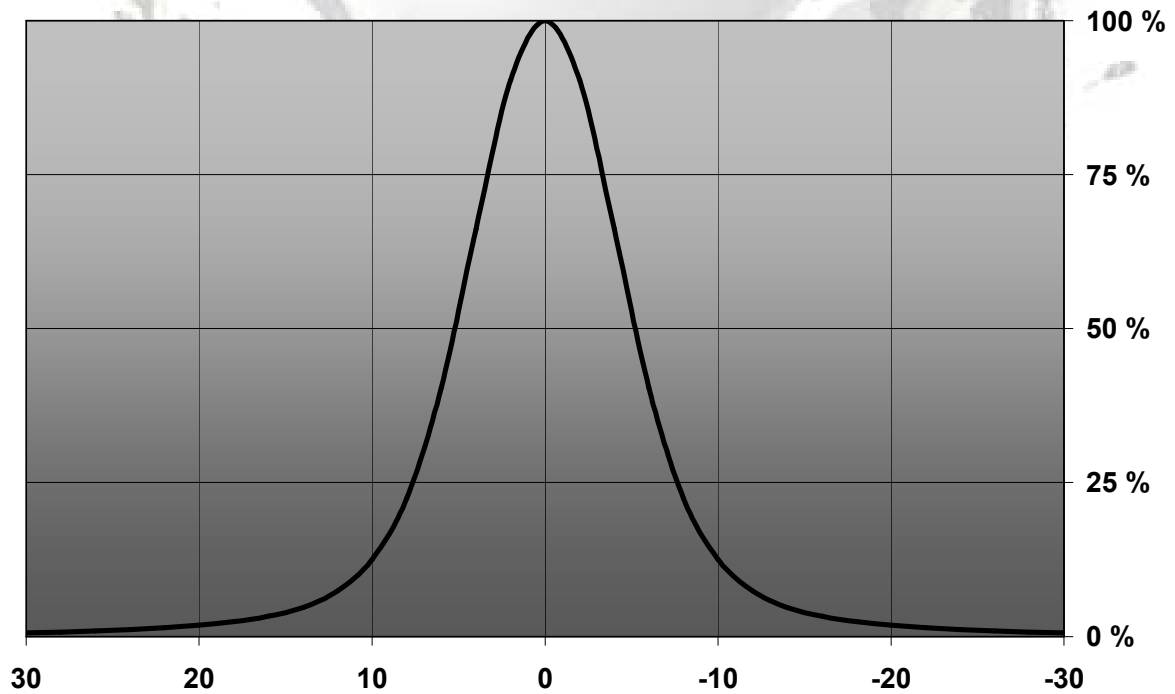
© Ledil Oy – PRELIMINARY - Subject to change without prior notice

MEASUREMENT DATA

Relative Intensity LC1-RS

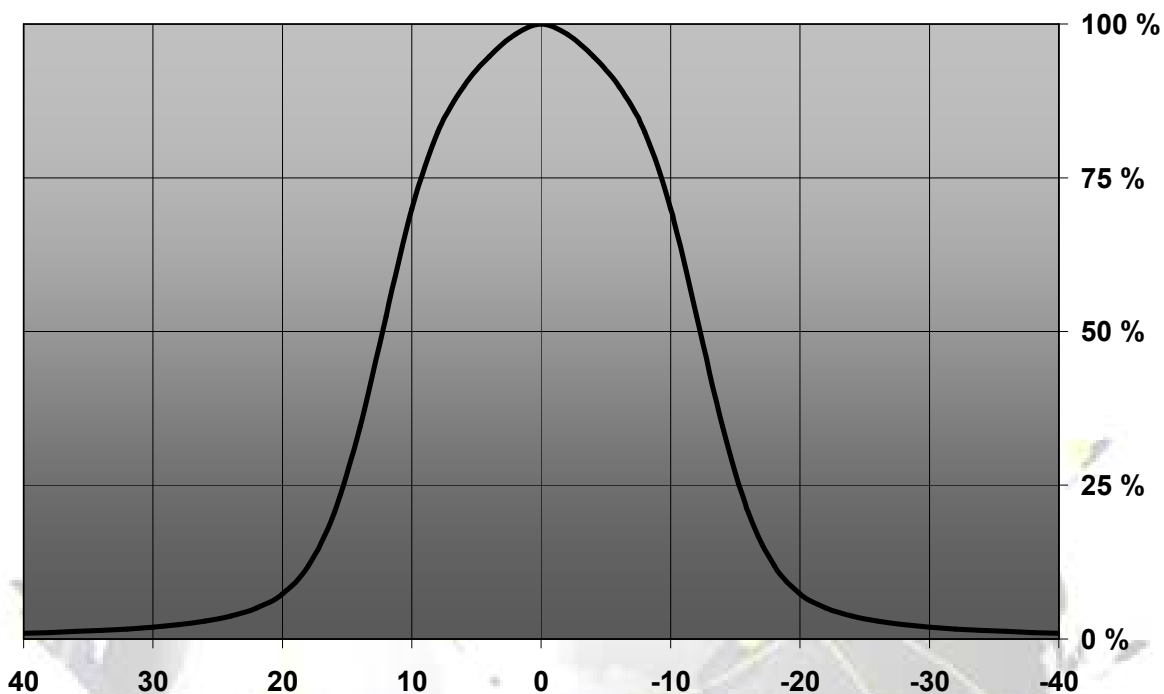


Relative Intensity of FA10810_LC1-D

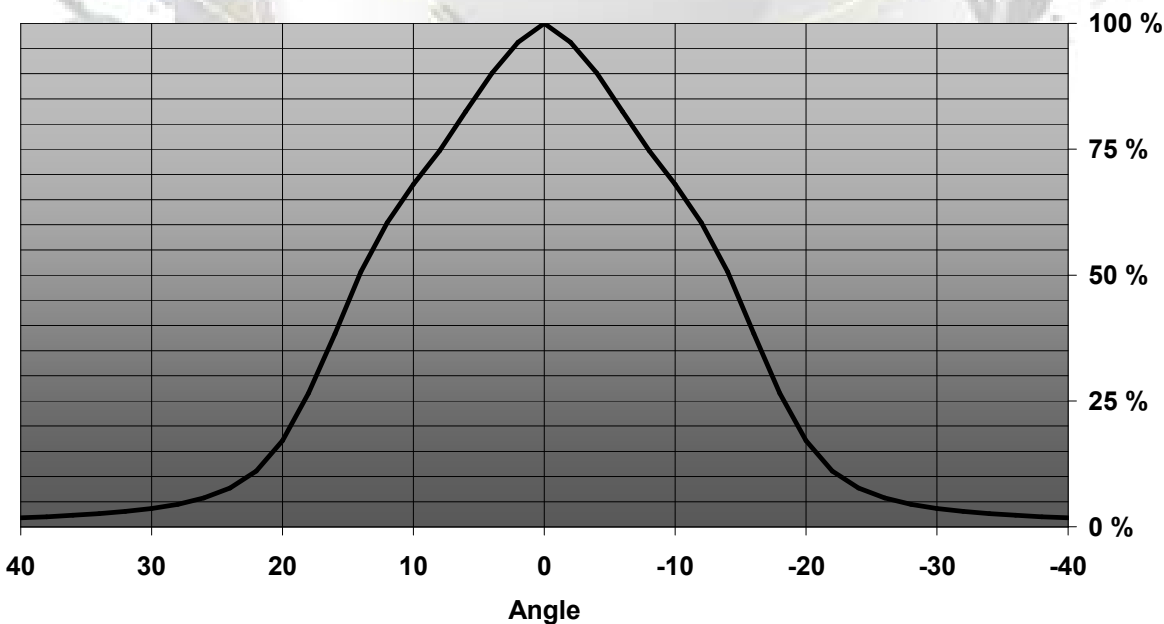


© Ledil Oy – PRELIMINARY - Subject to change without prior notice

Relative Intensity of FA11373_LC1-MD-Tape

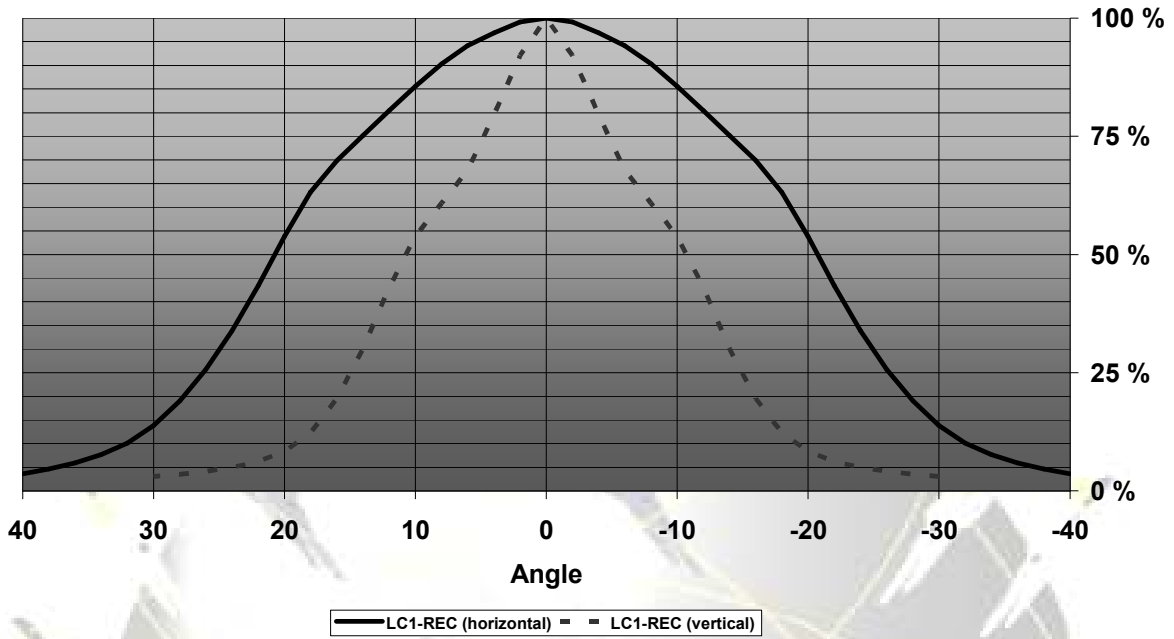


Relative Intensity of LC1-M



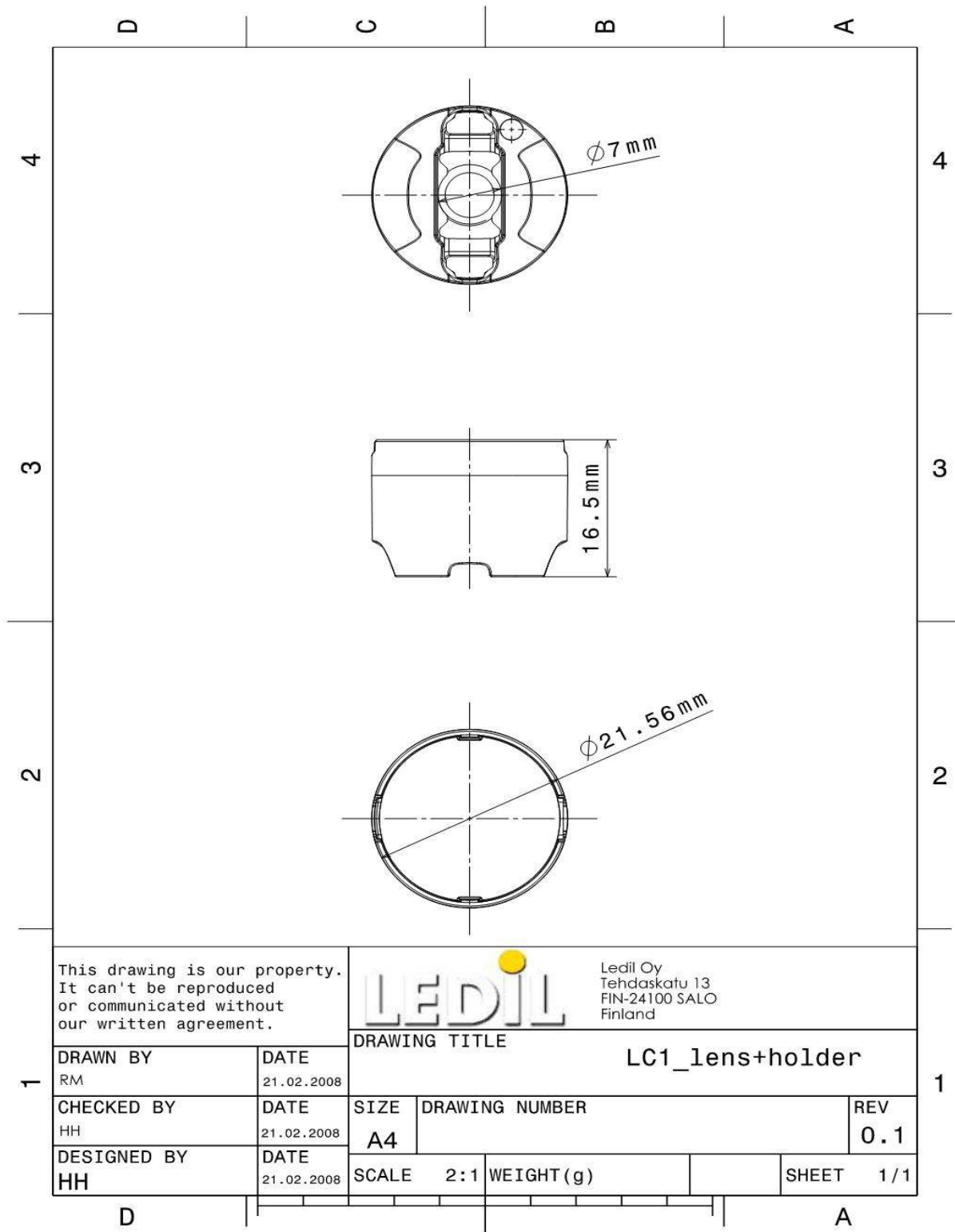
© Ledil Oy – PRELIMINARY - Subject to change without prior notice

Relative Intensity of LC1-REC



EULUMDAT & IES FILES AVAILABLE BY REQUEST

DRAWINGS



© Ledil Oy - PRELIMINARY - Subject to change without prior notice

X-ON Electronics

Largest Supplier of Electrical and Electronic Components

Click to view similar products for [LED Lenses](#) category:

Click to view products by [Ledil](#) manufacturer:

Other Similar products are found below :

[131A-303G](#) [131A-304R](#) [139A-403R](#) [139A-403A](#) [160A-604R](#) [160A-604Y](#) [SMB_200_GTP](#) [SMQ_250_ATP](#) [SMS_172_RTP](#) [SQB_400_ATP](#)
[SSN-LX13049L-CD](#) [SSN-LX18754A](#) [SSN-LX18754C](#) [2817](#) [CLR_301_YTP](#) [CMC_313_ATP](#) [3121](#) [3124](#) [3125](#) [39-30-W03](#) [4344](#) [4623](#)
[4745](#) [4747](#) [3111](#) [3114](#) [3115](#) [3121](#) [3122](#) [3124](#) [3125](#) [4327](#) [4743](#) [4745](#) [4752](#) [4757](#) [SSN-LX690L1-C](#) [SQL_360_YTP](#) [SMQ_250_BTP](#) [3114](#)
[3113](#) [CMS444CTP](#) [1125-227-000](#) [4317](#) [4347](#) [4741](#) [4316](#) [4343](#) [4345](#) [4345](#)