

# New Fluke TL175 TwistGuard™ Test Leads

## Twist. Test.

## Technical Data

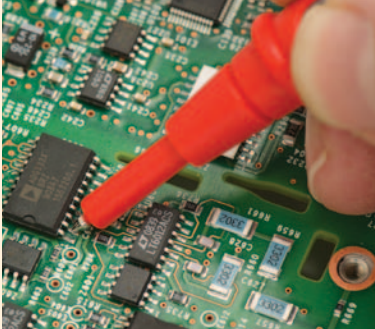
### TL175 TwistGuard™ Test Leads offer:

- Patented TwistGuard™ extendable tip shroud that meets new electrical safety requirements to reduce tip exposure while providing the versatility needed for most measurements
- New WearGuard™ lead wire wear indicator. Each test lead is covered by two layers of silicone insulation; inner contrasting color is exposed when the leads are nicked, scuffed, or otherwise damaged and in need of replacement
- Double insulated silicone leads. TL175 withstands high temperatures and remains flexible in cold temperatures
- Extra-heavy strain relief on both probe-end and plug-end, tested beyond 30,000 bends without failure
- Universal input plugs compatible with all instruments that accept standard 4 mm shrouded banana plugs
- Probes always show correct category rating for tip exposure being used
- TL175E also available. Includes removable 4 mm lantern tips for versatility
- Conforms to EN61010-031
- Ratings: CAT II 1000 V, CAT III 1000 V, CAT IV 600 V, 10 A max., Pollution Degree 2
- Environmental ratings: -20 °C to 55 °C (-4 °F to 131 °F), altitude: 2000 m (6,562 ft)

The Fluke TL175 TwistGuard™ Test Leads offer adjustable length test tips for use in different measurement environments. By simply twisting the test lead the user can change the exposed probe tip length from 19 mm to 4 mm (0.75 in to 0.16 in).



## TL175 TwistGuard™ Test Leads



Reduce tip exposure for accurate placement



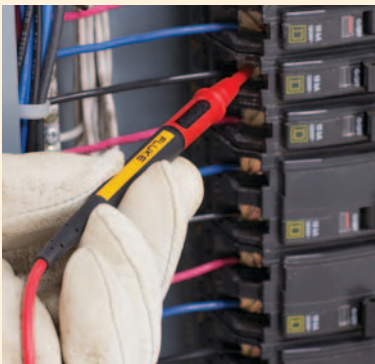
Extreme strain relief tested to withstand over 30,000 bends



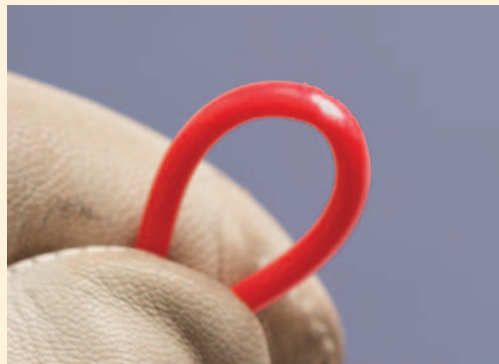
Increase tip exposure for CAT II probing



Universal plugs compatible with all 4 mm shrouded inputs



Reduce tip exposure for CAT III testing



WearGuard™ indicator shows insulation damage

**Fluke.** *Keeping your world up and running.*®

**Fluke Corporation**  
PO Box 9090, Everett, WA 98206 U.S.A.

**Fluke Europe B.V.**  
PO Box 1186, 5602 BD  
Eindhoven, The Netherlands

**For more information call:**  
In the U.S.A. (800) 443-5853 or  
Fax (425) 446-5116  
In Europe/M-East/Africa +31 (0) 40 2675 200 or  
Fax +31 (0) 40 2675 222  
In Canada (800)-36-FLUKE or  
Fax (905) 890-6866  
From other countries +1 (425) 446-5500 or  
Fax +1 (425) 446-5116  
Web access: <http://www.fluke.com>

©2010-2012 Fluke Corporation.  
Specifications subject to change without notice.  
Printed in U.S.A. 5/2012 3860288C\_EN

**Modification of this document is not permitted without written permission from Fluke Corporation.**

## Ordering information

**Model**  
**TL175 TwistGuard™ Test Leads**

## X-ON Electronics

Largest Supplier of Electrical and Electronic Components

*Click to view similar products for [fluke](#) manufacturer:*

Other Similar products are found below :

[FLUKE-1630-2FC](#) [665080](#) [677393](#) [708396](#) [FLK-VT04-CHARGER](#) [FLUKE-355](#) [FLUKE-424D](#) [FLUKE 80PK-11](#) [FLUKE 80PK-22](#)  
[FLUKE A3002FC](#) [FLUKE C280](#) [FLUKE I200](#) [FLUKE I3000FLEX-24](#) [FLUKE I400](#) [FLUKE TLK287](#) [FOC-ST/FC](#) [FUSE-15A/600BLSTR](#)  
[DSP-SR](#) [1553041](#) [1576734](#) [1610198](#) [1633984](#) [C28Y](#) [2096971](#) [2148281](#) [2166266](#) [RS41](#) [2477950](#) [2550519](#) [2558118](#) [2577126](#) [2584901](#)  
[2811795](#) [2840276](#) [STL120-III](#) [1LAC-A](#) [FLUKE 52](#) [FLUKE 54](#) [FLUKE-789](#) [FLUKE-805](#) [FLUKE 80K-15](#) [FLUKE 8808/TL](#) [FLUKE-971](#)  
[FLUKE C101](#) [FLUKE I410](#) [FLUKE T5-1000-KIT](#) [FLUKE TP912](#) [FLUKE V3000FC](#) [2032761](#) [2097005](#)