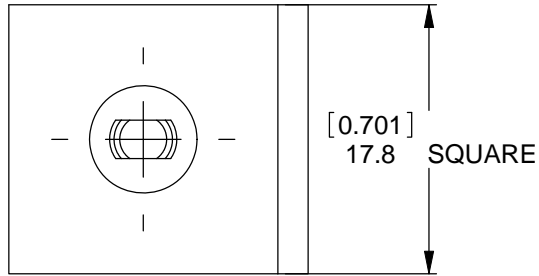
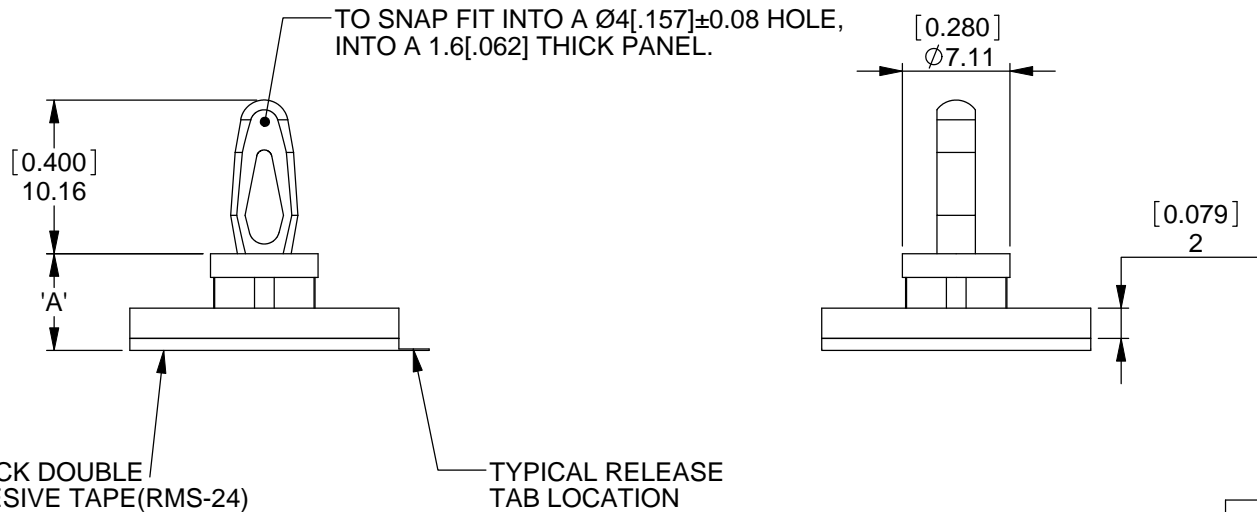
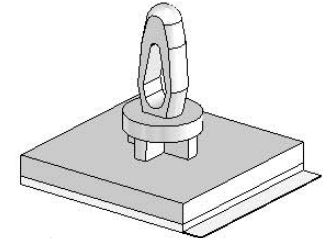


A B C D E F



REV.	MODIFICATION.	DATE	DRN
01	NEW DWG, ECN 07-170	10/12/07	SF
02	ECN 07-231	11/12/07	SF
03	CO2010267	07/07/08	SF
04	CO2010822	17/09/09	OW
05	CO2010945	22/06/10	SF
06	CO2011035	10/01/11	SF



NOTES

- 1) METRIC PRIMARY UNITS:mm
- 2) ADHESIVE / URETHANE FOAM TAPE (RMS-24), PE WHITE LINER.
- 3) PARTS ALSO AVAILABLE WITHOUT TAPE BY SPECIAL ORDER.
TO ORDER REMOVE 'A2-RT' FROM PART No., & SUBTRACT 1 FROM 'A' DIMENSION.
- 4) THE COLOUR OF THE ADHESIVE LINER MAY VARY. THIS WILL NOT AFFECT THE TECHNICAL PROPERTIES OF THE PART.

ALTERNATE UNITS FOR REFERENCE ONLY

INFORMATION CONTAINED IN THIS DOCUMENT IS CONFIDENTIAL TO RICHCO INTERNATIONAL Co. Ltd. AND MAY NOT BE DISCLOSED OR REPRODUCED IN WHOLE OR PART WITHOUT THEIR WRITTEN CONSENT.

MATERIAL NYLON 6/6 UL94 V2(RMS-01)	MATERIAL NYLON 6/6 UL 94 V0(RMS-19)	"A" DIM
CBSB-3-01A2-RT	CBSB-3-19A2-RT	4.8[.189]
CBSB-4-01A2-RT	CBSB-4-19A2-RT	6.4[.252]
CBSB-6-01A2-RT	CBSB-6-19A2-RT	9.5[.374]
CBSB-8-01A2-RT	CBSB-8-19A2-RT	12.7[.500]
CBSB-9-01A2-RT	CBSB-9-19A2-RT	14.3[.562]
CBSB-10-01A2-RT	CBSB-10-19A2-RT	15.9[.626]
CBSB-12-01A2-RT	CBSB-12-19A2-RT	19.1[.752]
CBSB-14-01A2-RT	CBSB-14-19A2-RT	22.2[.874]
CBSB-16-01A2-RT	CBSB-16-19A2-RT	25.4[1.000]
CBSB-18-01A2-RT	CBSB-18-19A2-RT	28.6[1.126]

RICHCO, INC.
WWW.RICHCO-INC.COM

GENERAL TOLERANCES ±0.25 [0.010]
UNLESS OTHERWISE STATED
1 DECIMAL PLACE ±
2 DECIMAL PLACES ±
ANGULAR ±1°



MATERIAL: SEE NOTES		COLOUR: NATURAL	
DESCRIPTION: CIRCUIT BOARD SUPPORT ON BASE		PART No: SEE TABLE	
DRG No: 07-097	NPR No: N/A	SHEET SIZE A4	
DRN SF	DATE 10/12/07	CHKD NBr	DATE 11/12/07
SCALE NTS	SHEET No. 1 OF 1		

A B C D E F FORM No. 0145/03

X-ON Electronics

Largest Supplier of Electrical and Electronic Components

Click to view similar products for [richco](#) manufacturer:

Other Similar products are found below :

[KLB450ART](#) [RBS-5-BK](#) [FMB-1](#) [DHURCS-3-01](#) [RRC-16-9-28-M2](#) [RRH-142-80-150](#) [DHURCS-4-01](#) [RRC-16-9-28-M1](#) [RT-310-190-222](#)
[RLCBSR-10-01](#) [OFST-1-L](#) [RFS1-15-7-A5](#) [RT-145-102-80](#) [RSH6-76100-50A](#) [RFP1-34-28-A5](#) [CAT-15-PP-BU](#) [CAT-32-PP](#) [RT-142-64-135](#)
[FGPT-92](#) [MFTH-2-01A-RT-M](#) [RT-290-190-77](#) [BMS-SAX300MM](#) [RRH-110-50-250](#) [SHR-32-6NB](#) [RCP-040-T](#) [LEDS2M-440-01](#) [SHR-C2](#)
[RKCF-08-A5](#) [CBSS-8-01](#) [RRH-120-85-150](#) [RFS1-15-15-A5](#) [RT-280-160-75](#) [MB-1-156](#) [RFS2-34-12-2-A5](#) [RT-175-95-127](#) [RT-290-190-75](#)
[RT-70-35-40](#) [SNGS-2](#) [SPGSG-2](#) [RT-100-70-50](#) [WSB-2-01A-RT](#) [SP3-4-01](#) [RT-100-70-70](#) [RRH-186-102-286](#) [SHR-32-PPB](#) [VMCGN120-](#)
[M3-L-K](#) [OFHB3-4-19A-RT](#) [RRH-140-90-150](#) [RT-160-120-80](#) [RSFS-450](#)