

SHV SERIES



- 5 KV voltage rating.
- Non-constant impedance.
- Quick connect & disconnect bayonet coupling design.
- Outer contact ground connection is maintained through the center contact mating cycle.
- Recessed center contacts prevent shock hazards while unmated.

SPECIFICATIONS

MATERIAL

| | |
|-------------------------|-------------------------|
| Body: | Brass |
| Crimp Sleeves: | Commercial Bronze Alloy |
| Male Center Contacts: | Brass |
| Female Center Contacts: | Beryllium Copper |
| Outer Contacts: | Beryllium Copper |
| Insulators: | Teflon® or Rexolite® |
| Gaskets & Seals: | Silicone Rubber |

FINISHES

| | |
|------------------|--------|
| Body: | Nickel |
| Center Contacts: | Gold |

ELECTRICAL

| | |
|------------------------|---|
| Impedance: | Non-Constant |
| Voltage Rating: | Operating: 3500 VRMS Test: 5000 VRMS |
| Insulation Resistance: | 10 ⁶ Megaohms |

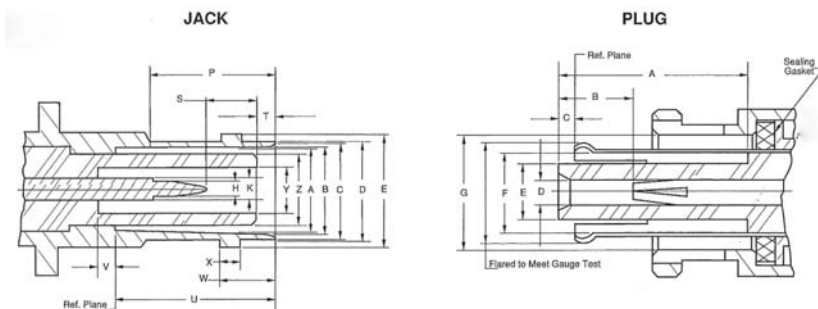
MECHANICAL

Mating: 2 Stud Bayonet Coupling

ENVIRONMENTAL

| | |
|--------------------|---|
| Temperature Range: | -65° C to +165° C |
| Teflon® | -55° C to +85° C |
| Rexolite® | MIL-STD-202, Method 204, Condition A |
| Vibration: | MIL-STD-202, Method 213, Condition I |
| Shock: | MIL-STD-202, Method 101, Condition B |
| Corrosion: | |

INTERFACE DIMENSIONS



Jack

| Dim | Inches | | Millimeters | | |
|-----|--------|------|-------------|-------|-----|
| | Ltr | Min | Max | Min | Max |
| A | .319 | .321 | 8.10 | 8.15 | |
| B | .328 | .333 | 8.33 | 8.46 | |
| C | .347 | .357 | 8.81 | 9.07 | |
| D | .378 | .382 | 9.60 | 9.70 | |
| E | .432 | .436 | 10.97 | 11.07 | |
| H | .052 | .054 | 1.32 | 1.37 | |
| K | .081 | .083 | 2.06 | 2.11 | |
| P | .427 | | 10.85 | | |
| S | .188 | .208 | 4.78 | 5.28 | |
| T | .061 | .078 | 1.55 | 1.98 | |
| U | .628 | .630 | 15.90 | 16.00 | |
| V | .064 | .086 | 1.63 | 2.18 | |
| W | .204 | .208 | 5.18 | 5.28 | |
| X | .075 | .081 | 1.90 | 2.06 | |
| Y | .190 | .186 | 4.83 | 4.68 | |
| Z | | .260 | | 6.60 | |

Plug

| Dim | Inches | | Millimeters | | |
|-----|--------|------|-------------|-------|-----|
| | Ltr | Min | Max | Min | Max |
| A | .628 | .632 | 15.95 | 16.05 | |
| B | .238 | .262 | 6.05 | 6.65 | |
| C | .046 | .064 | 1.17 | 1.63 | |
| D | .082 | | 2.08 | | |
| E | .180 | .186 | 4.57 | 4.72 | |
| F | .264 | | 6.71 | | |
| G | .385 | .390 | 9.78 | 9.91 | |

BULKHEAD RECEPTACLES

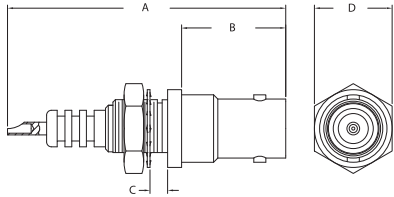


FIGURE 1

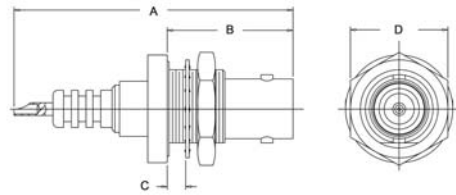


FIGURE 2

ADAPTERS - WITHIN SERIES

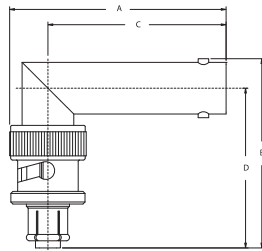


FIGURE 3

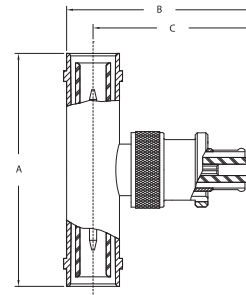


FIGURE 4

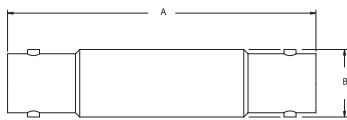


FIGURE 5

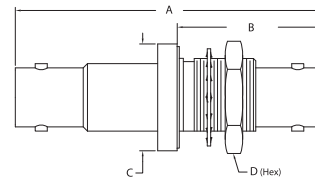


FIGURE 6

| Item Number | Military PN | Product Description | Gender | Finish | A | Dimensions | | | Cable Group | Cable Procedure | Crimp Die | Mounting Hole | Figure # |
|---------------|-------------|--|--------|--------|-------|------------|-------|-------|-------------|-----------------|-----------|---------------|----------|
| | | | | | B | C | D | | | | | | |
| 1704-1 QD | | Receptacle, Bulkhd, Front Mt, Teflon Insl | F | Nickel | 1.790 | 0.670 | 0.182 | 0.500 | | SOLDER | | H | 1 |
| 1704-3-9 | | Receptacle, Bulkhd, Front Mt | F | Nickel | 1.780 | 0.670 | 0.182 | 0.500 | | SOLDER | | | 1 |
| 1704-1-11 M06 | | Recept, Bulkhd, Front Mt, Rexolite Insl | F | Nickel | 1.780 | 0.670 | 0.182 | 0.500 | | SOLDER | | H | 1 |
| 1704-2 | | Receptacle, Bulkhd, Rear Mt | F | Nickel | 1.790 | 0.810 | 0.235 | 0.630 | | SOLDER | | X | 2 |
| 1709-12 M06 | | Within Series Adapter, Rt Angle | F-M | Nickel | 1.590 | 1.390 | 1.310 | 1.170 | | | | | 3 |
| 1709-3 | | Within Series Adapter, Tee | M-F-M | Nickel | 1.710 | 1.370 | 1.170 | | | | | | 4 |
| 1709-5 | | Within Series Adapter | F-F | Nickel | 1.990 | 0.440 | | | | | | | 5 |
| 1709-1 | | Within Series Adapter, Bulkhd, Teflon Insl | M-M | Nickel | 1.990 | 0.950 | 0.690 | 0.630 | | | | X | 6 |
| 1709-1-11 | | Within Series Adapter, Bulkhd, Rexolite Insl | M-M | Nickel | 1.990 | 0.950 | 0.690 | 0.630 | | | | X | 6 |
| 1709-2 | | Within Series Adapter, Bulkhd, Hermetic | F-F | Nickel | 2.250 | 1.150 | 0.690 | 0.630 | | | | X | 6 |

SHV SERIES

PLUGS - K-GRIP, JR.

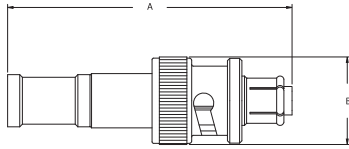


FIGURE 7

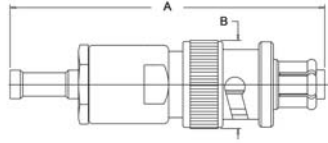


FIGURE 8

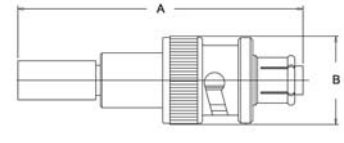


FIGURE 9

PLUG - CONVENTIONAL

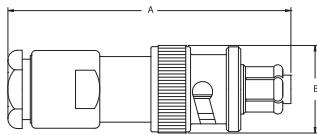


FIGURE 10

BULKHEAD JACK - K-GRIP, JR.

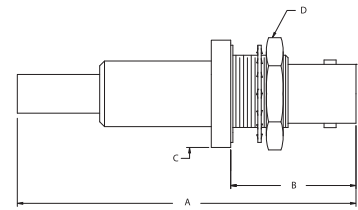


FIGURE 11

PANEL RECEPTACLE

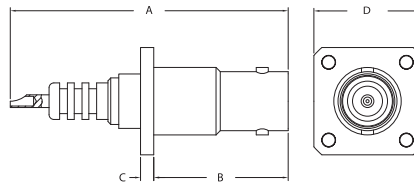


FIGURE 12

| Item Number | Military PN | Product Description | Gender | Finish | Dimensions | | | | Cable Group | Cable Procedure | Crimp Die | Mounting Hole | Figure # |
|-------------|-------------|---|--------|--------|------------|-------|-------|-------|-------------|-----------------|-----------|---------------|----------|
| | | | | | A | B | C | D | | | | | |
| 1705-1 | | Plug, Weatherproof Crimp, Teflon Insl | M | Nickel | 1.830 | 0.560 | | | G1 | CP-441 | KTH-2062 | | 7 |
| 1705-2 | | Plug, Weatherproof Crimp, Teflon Insl | M | Nickel | 1.750 | 0.560 | | | D | CP-441 | KTH-2061 | | 7 |
| 1705-2-1 | | Plug, Weatherproof Crimp, Rexolite Insl | M | Nickel | 1.730 | 0.560 | | | D | CP-441 | KTH-2061 | | 7 |
| 1705-21-9 | | Plug, Weatherproof Crimp, 6KV | M | Nickel | 1.710 | 0.560 | | | G1 | CP-441 | KTH-2062 | | 7 |
| 1705-4 | | Plug, Weatherproof Crimp | M | Nickel | 2.140 | 0.630 | | | N1 | CP-457 | KTH-1079 | | 7 |
| 1705-3 | | Plug, Weatherproof Crimp | M | Nickel | 2.010 | 0.560 | | | B1 | CP-447 | KTH-2071 | | 8 |
| 1705-16 M06 | | Plug, Crimp, Teflon Insl | M | Nickel | 1.790 | 0.560 | | | 40 | CP-441 | KTH-2001 | | 9 |
| 1705-16-11 | | Plug, Crimp, Rexolite Insl | M | Nickel | 1.770 | 0.560 | | | 40 | CP-441 | KTH-2001 | | 9 |
| 1705-14 | | Plug, Conventional | M | Nickel | 1.810 | 0.560 | | | G1 | CP-1001.3 | | | 10 |
| 1702-1 | | Jack, Bulkhd, Rear Mt | F | Nickel | 2.200 | 0.810 | 0.690 | 0.630 | G1 | CP-441 | KTH-2062 | X | 11 |
| 1702-2 | | Jack, Bulkhd, Rear Mt | F | Nickel | 2.200 | 0.810 | 0.690 | 0.630 | D | CP-441 | KTH-2061 | X | 11 |
| 1702-4-11 | | Jack, Bulkhd, Rear Mt | F | Nickel | 2.200 | 0.810 | 0.690 | 0.630 | 40 | CP-441 | KTH-2001 | X | 11 |
| 1707-1 | | Receptacle, Panel | M | Nickel | 1.790 | 0.870 | 0.090 | 0.690 | | SOLDER | | | 12 |

X-ON Electronics

Largest Supplier of Electrical and Electronic Components

Click to view similar products for [kings manufacturer](#):

Other Similar products are found below :

[875-57-1](#) [125-94-9](#) [126-12-5](#) [2025-38-9](#) [KA-19-156](#) [KA-89-92-M06](#) [KC-59-509](#) [KD-79-19](#) [KN-19-151](#) [KP-8010-740-400](#) [2431-84-11](#)
[KTH-2003](#) [KTH-2011](#) [2065-6-9](#) [2431-89-11](#) [UG-27D/U](#) [KA-59-351M07](#) [KA-79-56](#) [KA-99-57](#) [KC-59-122](#) [KC-59-485](#) [KC-79-67](#) [KC-89-](#)
[87](#) [KN-59-104](#) [KTH-2087](#) [KTH-2138](#) [KTH-2168](#) [KV-19-13](#) [UG-701A/U](#) [KC-59-195](#) [KTH-2101](#) [KTH-5000](#) [122-32-5](#) [KA-81-04](#) [KP-](#)
[8010-730-400](#) [KTH-2023](#) [KTH-2024](#) [KTH-2105](#) [KTH-2111](#) [KTH-2127](#) [KTH-2185](#) [KTH-2325](#) [7702-9](#) [7703-6](#) [7705-3](#) [1205-69-5](#) [E-3511-](#)
[M99](#) [KP-8040-006-000](#) [KP-9005-000-090](#) [KP-9211-070-009](#)