



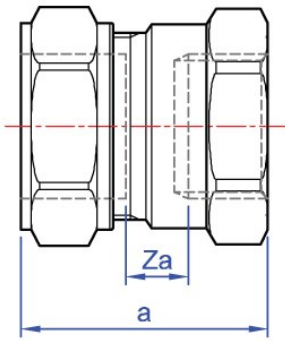
Female coupling. copper x BSP parallel female thread.

K612



Size	Pattern No.	Pack 1 Qty	Pack 2 Qty	Code	Barcode	Price (£) ex VAT
8mm x 1/4"	K612	5	300	41082K	5022050063960	£9.60
10mm x 3/8"	K612	5	200	41084K	5022050064202	£8.77
10mm x 1/2"	K612	5	150	41081K	5022050063786	£7.99
12mm x 3/8"	K912	5	200	43085K	5022050095718	£8.97
12mm x 1/2"	K912	5	150	43086K	5022050095770	£9.29
15mm x 3/8"	K912	5	150	43087K	5022050095831	£10.88
15mm x 1/2"	KS612	5	150	61088K	5022050121622	£3.31
15mm x 3/4"	K912	5	125	43089K	5022050096081	£12.70
18mm x 1/2"	K912	5	100	43090K	5022050096142	£12.70
18mm x 3/4"	K912	5	50	43094K	5022050096388	£14.67
22mm x 1/2"	K912	5	100	43091K	5022050096203	£12.70
22mm x 3/4"	KS612	5	100	61092K	5022050121684	£4.76
22mm x 1"	K612	5	50	61093K	5022050121745	£10.50
28mm x 3/4"	K612	5	70	61094K	5022050121806	£21.32
28mm x 1"	K612	5	50	61095K	5022050121868	£13.41
35mm x 1 1/4"	K912	1	25	43098K	5022050096500	£37.89
42mm x 1 1/2"	K912	1	25	43099K	5022050096562	£50.96
54mm x 2"	K912	1	12	43100K	5022050096623	£74.76

K612



Code	Description	a	za
41082K	8mm x 1/4" K612	29	4
41084K	10mm x 3/8" K612	32	8
41081K	10mm x 1/2" K612	35	9
43085K	12mm x 3/8" K912	36	10
43086K	12mm x 1/2" K912	38	10
43087K	15mm x 3/8" K912	37	6
61088K	15mm x 1/2" KS612	39	6
43089K	15mm x 3/4" K912	41	6
43090K	18mm x 1/2" K912	39	5
43094K	18mm x 3/4" K912	40	4
43091K	22mm x 1/2" K912	41	6
61092K	22mm x 3/4" KS612	43	6
61093K	22mm x 1" K612	46	8
61094K	28mm x 3/4" K612	44	6
61095K	28mm x 1" K612	46	7
43098K	35mm x 1 1/4" K912	56	12
43099K	42mm x 1 1/2" K912	58	9
43100K	54mm x 2" K912	59	7

Pegler Yorkshire reserve the right to change specifications

Pegler Yorkshire Kuterlite Guarantee - Terms and Conditions

Products are subject to a guarantee that is between Pegler Yorkshire and the final purchaser of the product. When correctly assembled with the stated tubes and pipe the length of guarantee is as follows:

Kuterlite fittings and valves installed with specified tubes and pipes with the exception of those listed below - 25 years.

Kuterlite Flexifit flexible connectors - 10 years

Kuterlite 600/900 fittings and valves installed with XPress Carbon Steel System tube in sizes up to 28mm - 10 years

Kuterlite 600/900 fittings and valves installed with other manufacturers carbon steel tube to DIN 2394/NEN 1982 in sizes up to 28mm - 5 years

The guarantee is subject to proof of purchase being supplied.

This guarantee does not affect any statutory rights the consumer may have in law.

The guarantee covers manufacturing or material defects when installed in accordance with our instructions on specified tube materials and applications, and does not cover parts subject to normal wear and tear.

This product range has been designed for the use of homeowners, domestic and commercial applications and therefore the Guarantee is subject to the product being properly selected for their intended service conditions.

The guarantee is not applicable where the product is fitted contrary to the conditions in the fitting instructions.

This is reinforced where valves are covered by the European Pressure Equipment Directive (PED97/23/EC) where Installation, Operating and Maintenance Instructions are supplied with each product and/or carton.

Provided it is installed correctly and receives adequate preventative maintenance it should give years of trouble-free service.

Abusive behaviour and accidental damage to the product are not covered by this guarantee.

The extent of this liability is limited to the cost of the replacement of the defective item and not to installation or consequential damages.

Size	-15°C (Min)	30°C	90°C	120°C (Max)
6mm to 10mm	70 bar*	70 bar	40 bar	25 bar
12mm to 28mm	20 bar*	20 bar	10 bar	7 bar
35mm to 54mm	16 bar*	16 bar	7 bar	5 bar

Care

No regular aesthetic care is required for this product

Maintenance

No regular maintenance is required for this product.

For any further help please contact the Service Support Team on: 0800 1560050.

Installation instructions

Kuterlite 600/900



INSTALLATION TIPS

1. Ensure the jointing surfaces and threads remain clean and free from grit.
2. If there is a slight weep from the joint, this will be readily corrected by the application of PTFE tape or a smear of an approved jointing compound to the sealing faces.
3. For advice on avoidance of stress corrosion cracking see page 19.
4. A few drops of light oil on the threads will assist the joint making operation, particularly for sizes 35mm and above.
5. More torque is required to tighten the compression nuts of 42mm and 54mm fittings, so spanners no shorter than 750mm (30") should be used.

TAKING APART AND REMAKING KUTERLITE JOINTS

Kuterlite fittings can be easily dismantled and remade without the loss of joint efficiency, providing the components are kept clean and undamaged. No sealing compound is usually needed to remake a Kuterlite joint, but care should be taken not to trap particles of foreign matter when reassembling. When re-tightening the coupling nut use just enough torque to "nip" the ring. Do not over tighten. Kuterlite fittings can replace union fittings where an infrequent disconnection facility is required.

The following instructions illustrate just how easy it is to make a Kuterlite joint. These cover Kuterlite 600, Kuterlite 900 and waste fittings in sizes up to and including 54mm. Details of how to joint large size Kuterlite 900 fittings can be found on page 4.

Preliminaries

Select the correct size of tube and fitting for the job. Ensure that both are clean, in good condition and free from damage and imperfections. If the tube is oval or damaged, use a re-rounding tool.

Copper tube should be of half-hard (R250) or hard (R290) temper. Annealed soft temper tube (R220) may be jointed using Kuterlite fittings.

Preparation

1. Cut the tube square using a rotary tube cutter wherever possible. If a hacksaw is used to cut the tube, a fine toothed blade should be used.



2. Remove any burr from the inside and outside of the tube ends using a fine toothed file or a S120 deburring tool from the XPress accessories range.

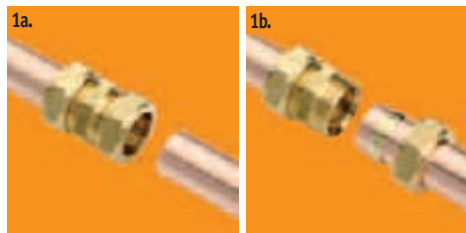


Jointing copper tube

There are two methods of assembling a Kuterlite joint.

- 1a. Insert the tube firmly into the compression fitting, ensuring that the compression ring seats centrally and that the tube makes firm contact with the tube stop in the body of the fitting.

- 1b. Remove the compression nut and compression ring, then put the nut and then the ring on the tube. Insert the tube end up to the fitting's tube stop. Slide the ring and the nut down to the fitting body.



2. Tighten the nut using your fingers until tight.



3. Tighten the nut further using high quality open ended or adjustable spanners. Spanner flats are incorporated into the design of Kuterlite fitting bodies. The second spanner must be used to prevent the fitting rotating as the nut is tightened. For normal joint making, tighten the nut 1 turn (360°) for fittings in sizes from 6mm to 12mm, or ¾ turn (270°) for fittings in sizes from 15mm to 54mm. A few drops of light oil on the threads will assist, especially on sizes 35mm and above. When jointing stainless steel or R220 copper tube some variation may be needed – the nut may be tightened further if necessary. Take care not to over tighten the compression nut, as this will not result in a stronger joint and could lead to problems in service.



Installation instructions

Kuterlite 600/900



Jointing half-hard thick walled R250 copper tube

This copper tube is significantly thicker than other varieties – refer to Table 1 on page 8 for specifications. Special care needs to be taken during installation. Follow steps one to three opposite, but with the following additional precautions:

1. Ensure pipework is supported during and after installation, as thick-walled copper tube is less tolerant of stress on the joints. The pipework should be clipped as close as possible to the fittings, particularly where long runs are involved.
2. Use spanners of the correct size and length. More torque is required to tighten Kuterlite fittings with thick walled copper tube, and care should be taken to ensure neighbouring joints are not disturbed.
3. Apply a light oil to the threads and chamfers where possible. This will reduce assembly torque and minimise the risk of damage. This is essential on sizes above 28mm.
4. If a sealant is required, use a suitable PTFE based compound, eg Loctite 577 or PTFE tape.

Jointing imperial copper tube

Selected Kuterlite 600 and Kuterlite 900 fittings can be used in maintenance applications to connect copper tube to former imperial sizes, such as BS 3931. For $\frac{3}{8}$ " use 12mm, $\frac{1}{2}$ " use 15mm, 1" use

28mm, 2" use 54mm, $2\frac{1}{2}$ " use 67mm. For other Kuterlite sizes up to and including 42mm, the use of an imperial by metric adaptor ring (K978C) will convert any metric compression fitting to be used with imperial tube. A K910IM can be used to convert sizes 22mm, 76mm and 108mm.

Jointing PEX and PB pipe

Part 2 can be jointed using Kuterlite 600 or Kuterlite 900 fittings in sizes up to 28mm. To achieve sound joints, ensure the pipe is cut square, and is not damaged or scored in any way. The correct sized pipe support liner must be fully inserted into the PEX or PB pipe before jointing commences. Use the appropriate liner as recommended by the pipe manufacturer.

Jointing carbon steel and stainless steel tube

XPress Stainless System tube or other stainless steel tube to BS EN 10312 (formerly BS 4127), DVGW GW541; and XPress Carbon steel System tube or other carbon steel tube to DIN 2394/ NEN 1982, can be jointed in sizes up to and including 28mm using Kuterlite 600 or Kuterlite 900 compression fittings. Carbon steel tubes are for use on non potable closed circuit systems only. To achieve sound joints, the following precautions should be taken:

1. Ensure no flats or score marks are visible on the outside surface of the tube. The weld bead should not be visible.
2. A suitable jointing compound should be applied to the sealing faces prior to tightening of the compression nuts. Sealants with PTFE fillers are preferred, with PTFE tape as an alternative.



SYSTEM TESTING

We recommend all systems are thoroughly tested upon completion. In hydraulic based installations the system may be tested to 1.5 times the working pressure of the system (see tables on page 9 for data). If higher test pressures are required advice should be sought from Yorkshire Fittings.

On completion, compressed air pipeline systems must be properly tested. The system designer and installation contractor must ensure safe methods are selected for system testing which will comply with all current Health and Safety regulations.

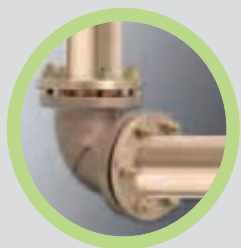
This may include testing compressed air lines with fluids or compressed air at a limited pressure, or a combination. In any event we do not recommend the maximum working pressure of the product be exceeded during this procedure.

N.B. The maximum temperature and pressure range in any system is dictated by the component with the lowest performance rating.

THREADED CONNECTORS

Kuterlite threaded connectors have taper male or parallel female BSP threads, and the most popular sizes have parallel male BSP threads. These are for jointing pipework to boilers, pumps or backplate elbows. For taper male threads, a small amount of inert jointing compound or PTFE tape should be applied before installation. When installing parallel male threads, for example to cisterns and cylinders, a good quality jointing washer should be used.

Installation underground and using reducers



JOINTING CHROME PLATED COPPER TUBE

Kuterlite chrome plated fittings can be used on chrome plated copper tube without the need for any additional preparation. Assemble the joint in the usual way – refer to instructions on page 14.

TYPE A & B FITTINGS

TYPE A COMPRESSION FITTINGS

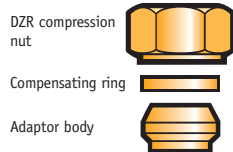
Type A, or non-manipulative fittings enable the installer to make a compression joint without carrying out any work on the tube ends other than ensuring that they are clean, burr free, and cut square.

TYPE B COMPRESSION FITTINGS

Type B, or manipulative fittings are used with soft (R220) copper tube and require the installer to flare the tube end before the joint is assembled.

TYPE B ADAPTORS

If soft copper is found in existing installations, the use of an 1870 Kufit adaptor allows conversion of the standard Kuterlite 900 Type A fitting to a Type B connection. The adaptor consists of an adaptor body, compensating ring and a DZR compression nut.



Jointing R220 soft copper tube.

Kuterlite 600 and 900 fittings can be used to joint R220 soft copper tube in the applications in Table 1.

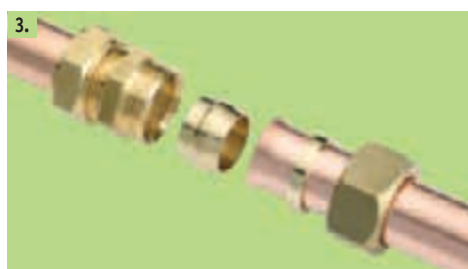
Using K900 fittings underground

Kuterlite 900 fittings can be used underground in conjunction with soft copper tube (R220) and an 1870 Kufit adaptor. A hacksaw should be used to cut the tube – a tube cutter must not be used for this application. All jointing surfaces must be kept clean throughout the process. Following preparation of the fitting and tube, assembly is carried out as follows:

1. Slip the compression nut and compensating ring over the tube.
2. Flare the end of the tube using a clean K1822 forming tool of the correct size by dealing a few blows with a hammer. This operation can be made easier with the use of a few drops of light oil.



3. Insert the parallel end of the adaptor piece in the fitting socket and locate the flared tube end onto the tapered face of the adaptor piece.



4. Slide the ring and the nut down to the fitting body and first tighten by hand. Then, using spanners, tighten the nut one full turn. This is generally sufficient to provide a sound, leakproof joint.



R220 soft copper tube applications compatible with K600/K900

Application	K600 fittings	K900 fittings
Above ground water and heating	In sizes up to 15mm, no pipe support liner is required. In sizes 15mm and above, use a K690 pipe support liner.	In sizes up to 15mm, no pipe support liner is required. In sizes 15mm and above, use a K690 pipe support liner.
Above ground fuel oil	Use a K690 pipe support liner.	Use a K690 pipe support liner.
Below ground water and oil	Not suitable.	In sizes 15mm to 42mm in conjunction with an 1870 Kufit adaptor.
Fuel oil below ground in access chambers as per BS 5410 Part 1	Not suitable.	In sizes 15mm to 42mm in conjunction with an 1870 Kufit adaptor. In sizes 6mm to 22mm in conjunction with a K690 pipe support liner.

Jointing K947 and K948 reducers

Reducing sets can be used to convert the size of a socket in the fitting. Kuterlite K947 one-piece reducers and Kuterlite K948 reducing sets are used as follows:

1. The use of a suitable PTFE based compound or PTFE tape between the fitting body and reducing set is required when assembling the reducer into the fitting.



- 2a. **K947 only.** Tighten the nut until sufficient force is achieved to snap the reducer. This can be confirmed by an audible click, which is part of the design and does not indicate a fault.

- 2b. **K948 only.** Tighten the nut slowly until the tube is just prevented from rotating.

3. Tighten the nut a further $\frac{1}{8}$ to $\frac{3}{8}$ of a turn.

An arrowhead stamped on the bottom of the nut provides a reference point for this.



Only one reducing set can be used per end. For multiple diameter reductions (eg 54mm x 28mm) or double diameter reductions (eg 35mm x 22mm), use only the correct reducing sets.

Installation instructions

Kuterlite 900 large size



Making a large size Kuterlite 900 joint 67mm to 108mm

The same preliminaries and preparation guidelines as Kuterlite 600 and Kuterlite 900 in sizes up to 54mm apply.

1. Place the flange and compression ring onto the tube.



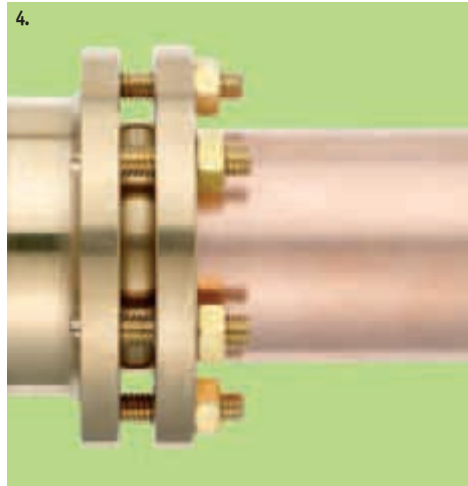
2. Insert the tube firmly into the compression fitting, ensuring that the compression ring seats centrally in the fitting body and that the tube makes firm contact with the tube stop.



3. Bring up the compression flange, and tighten the nuts by hand. Using a spanner, continue to tighten the nuts diagonally in increments of $\frac{1}{2}$ turn, to a total minimum of 2 turns and maximum of $2\frac{1}{2}$ turns. DO NOT OVERTIGHTEN THE NUTS as this may distort the flange or shear the nuts.



4. The compression flange should be parallel to the face of the body to indicate that a sound joint has been made.



5. If after assembling the joint in accordance with the instructions above a slight weep is experienced - as occasionally may happen - it will readily be corrected by the application of a smear of an approved sealing compound to the sealing faces.



EXTENDED RANGE

The Kuterlite 900 range now includes large size fittings in sizes 67mm, 76mm and 108mm.



GODKENDELSESINDEHAVER:

Pegler Yorkshire Ltd.
Haigh Park Road, Stourton
GB-LS10 IRT. Leeds
Telefon: +44 113 2701104
Telefax: 44 113 2725291

Kompressionsfittings til kobberør og PEX-rør
KUTERLITE K600 og K900 PRO RANGE
dim. 6 – 54 mm

FABRIKAT:

Pegler Yorkshire Ltd, England
Yorkshire Fittings Gyártó Kft., Ungarn

MÆRKNING:

- Fabrikantmærke: KUTERLITE (på omløber)
- Dimension (på omløber)
- Materiale: CR (hvis afzinkningsbestandig messing)

KVALITETSKONTROL:

Godkendelsesindehaver opretholder obligatorisk kontrolaftale med Teknologisk Institut, Aarhus.

BETINGELSER FOR MONTERING OG BRUG:

Højeste forekommende driftstryk i installationen må ikke overstige 1000 kPa.

For rør i bygning skal samlingerne være udskiftelige og anbragt, så de er fritliggende eller monteret i udsparinger eller foringsrør på en måde, så eventuelle utætheder umiddelbart kan konstateres.

Koblingen anvendes i brugsvandsinstallationer til samling af bløde og hårde kobberør i dimensionerne 6-54 mm og PEX-rør i dimensionerne 10-28 mm.

Ved samling af bløde kobberør og PEX-rør skal den til koblingen hørende støttebøsning anvendes.

Samlingen udføres i øvrigt i overensstemmelse med godkendelsesindehaverens monteringsvejledning.

BESKRIVELSE OG TEKNISKE DATA:

Udførelse	Koblingen består af 3 dele, koblingshus (nippel), kompressionsring og omløbermøtrik. Til samling af bløde kobberør og PEX-rør anvendes desuden en støttebøsning.
Materiale	Alle dele i kompressionskoblingen er af messing. Koblingen kan også leveres i afzinkningsbestandig messing.
Dimension	6-54 mm (kobberør) 10-28 mm (PEX-rør)


Thomas Bruun

Apr-2009

Q 09/002

GASTEC QA agreement

Pegler Yorkshire Ltd., Leeds, United Kingdom

Gastec Certification BV



CERTIFICATION CONTRACT
GASTEC QA-PRODUCT CERTIFICATE

Number: Q 09/002

Kiwa Gastec Certification, with its registered office in Apeldoorn, represented by
M.C.A. Mekes, Unit Manager Gas Distribution Materials, on the one hand,

and

Pegler Yorkshire Ltd., with its registered office Leeds, United Kingdom, hereinafter referred to as
"manufacturer", represented by Phil Thornton, Quality Manager - Systems/ Approvals, on the other,

whereas the manufacturer has requested to use the GASTEC QA certificate and the certification label
for the products manufactured and/or assembled and to be delivered by him, as specified in the
appendix to this certification contract, which is an integral part of it;

whereas Kiwa Gastec Certification is willing to grant the manufacturer the right to use them under the
conditions mentioned below,

declare to have agreed the following:

Article 1 - Regulations

The GASTEC QA regulations apply to this certification contract.

Article 2 - Reimbursement

The reimbursement payable to Kiwa Gastec Certification for concluding this certification contract is
given in the appendix to this certification contract, which is an integral part of it.

Article 3 - Terms of Delivery

The manufacturer's terms of delivery in respect of the products delivered under the certificate
concerned shall not contravene the provisions in the GASTEC QA regulations for product certification
and shall in particular not contravene the requirements for using the certificate.

Appendix A



Products

This GASTEC QA contract covers the following products:

Soldeerfittingen voor capillaire soldering van koperen pijpen volgens KE 5.

Materiaal: koper.

nr. 5001a	Bocht 90°: 12, 15, 22, 28, 35, 42 en 54 mm.
nr. 5002a	Bocht 90°: 12, 15, 22, 28, 35, 42 en 54 mm.
nr. 5040	Bocht 45°: 15 mm.
nr. 5041	Bocht 45°: 12 x 12, 15 x 15, 22 x 22, 28 x 28 en 35 x 35 mm.
nr. 5090	Bocht 90° (knie): 12, 15, 22, 28, 35, 42 en 54 mm. Bocht 90° (verloopknie): 15 x 12 en 22 x 15 mm.
nr. 5130	T-stuk: 12, 15, 22, 28, 35, 42 en 54 mm. T-stuk (verloop): 12 x 15 x 12, 15 x 15 x 12, 15 x 12 x 12, 15 x 12 x 15, 15 x 22 x 15, 22 x 15 x 15, 22 x 15 x 22, 22 x 22 x 15, 22 x 28 x 22, 22 x 12 x 22, 28 x 28 x 15, 28 x 12 x 28, 28 x 15 x 28, 28 x 15 x 22, 28 x 22 x 22, 28 x 28 x 22, 28 x 22 x 28, 35 x 15 x 35, 35 x 22 x 35, 35 x 28 x 35, 42 x 22 x 42, 42 x 28 x 42 en 54 x 42 x 54 mm.
nr. 5240	Verloopsok: 15 x 12, 22 x 12, 22 x 15, 28 x 15, 28 x 22, 35 x 22, 35 x 28, 42 x 28, 42 x 35, 54 x 42 en 54 x 35 mm.
nr. 5243	Verloopstuk: 15 x 12, 22 x 12, 22 x 15, 28 x 15, 28 x 22, 35 x 28, 42 x 35 en 54 x 42 mm. Verloopstuk: 12a x 10, 35a x 15, 35a x 22, 42a x 22, 42a x 28, 54a x 28 en 54a x 35 mm.
nr. 5270	Sok: 12, 15, 22, 28, 35, 42 en 54 mm.
nr. 5301	Kap: 12, 15, 22, 28, 35, 42 en 54 mm.
nr. 5085	Omloopsok: 12, 15 en 22 mm.
nr. 5086	Omloopstuk: 12a x 12, 15a x 15 en 22a x 22 mm.

Knelfitting, met klemring-afdichting, voor het verbinden van koperen pijpen volgens KE 5 in de kwaliteit half hard.

Max. werkdruk voor gas 1 mbar.

Uitvoeringen in de maten 10, 12, 15, 22 en 28 mm, in messing of vernikkeld.

610	Rechte knelfitting: 10, 15, 22, 28, 22 x 15, 28 x 15 en 28 x 22 mm.
611	Verloopknelfitting: buitendraad x knel. R 3/8 x 10, R 1/4 x 15, R 1/2 x 15, R 3/4 x 15, R 3/4 x 22, R 1 x 22 en R 1 x 28 mm.
612	Verloopknelfitting: binnendraad x knel. Rp 1/2 x 15, Rp 3/4 x 22, Rp 1 x 22, Rp 3/4 x 28 en Rp 1 x 28 mm.



615	Knieknelfitting: 15, 22, 28, 10 x 12, 10 x 15, 12 x 15, 15 x 22 en 22 x 28 mm.
615S	Bochtknelfitting: 15, 22 en 28 mm.
616	Knieknelfitting: conische buitendraad x knel. R 1/2 x 15, R 3/4 x 15, Rp 3/4 x 22, R 1 x 22 en R 1 x 28 mm.
617	Knieknelfitting: binnendraad x knel. Rp 1/2 x 15, R 1/2 x 22, Rp 3/4 x 22, Rp 1 x 22 en R 1 x 28 mm.
617W	Knieknelfitting met muurplaat: binnendraad x knel. Rp 1/2 x 15 en Rp 3/4 x 15 mm.
618	T-knelfitting: 15, 22 en 28 mm.
618EB	T-knelfitting: 22 x 15 x 15 en 28 x 22 x 15 mm.
618B	T-knelfitting: 22 x 15 x 22 mm.
618E	T-knelfitting: 22 x 22 x 15 mm.
623	Kruis knelfitting: 15 x 22 x 15 x 15, 15 x 22 x 15 x 22, 22 x 22 x 22 x 22 mm.
630	T-knelfitting: knel x binnendraad x knel. 28 x Rp 3/4 x 28 mm.
630E	T-knelfitting: knel x knel x binnendraad. 15 x 15 x Rp 3/8.
631	Uitloop T-knelfitting: 22 x 15 x 22 mm
651	Eindknelfitting: 15, 22 en 28 mm.
652	45° Bocht knelfitting: 15 mm.
657	Inloop T-knelfitting: 15 en 22 mm
659	Hoek T-knelfitting: 15 x 15 x 15, 22 x 15 x 15, 22 x 15 x 22 en 22 x 22 x 22 mm.
910	Rechte knelfitting: 12, 15, 22, 28, 10 x 12, 15 x 12, 22 x 15 en 28 x 22 mm.
911	Verloopknelfitting: conische buitendraad x knel. R 3/8 x 12, R 3/8 x 15, R 1/2 x 12, R 1/2 x 15, R 1/2 x 22, R 3/4 x 15 en R 3/4 x 28 mm.
912	Verloopknelfitting: binnendraad x knel. Rp 3/8 x 12, Rp 3/8 x 15, Rp 1/2 x 12, Rp 1/2 x 15, Rp 1/2 x 22, Rp 3/4 x 15, Rp 3/4 x 22, Rp 1 x 22 en Rp 1 x 28 mm.
915	Knieknelfitting: 12, 15, 22, 28 en 10 x 12 mm.
916	Knieknelfitting: conische buitendraad x knel. R 3/8 x 12, R 1/2 x 12, Rp 1/2 x 15, R 3/4 x 22, R 1 x 22 en R 1 x 28 mm.
917	Knieknelfitting: binnendraad x knel. Rp 3/8 x 12, Rp 3/8 x 15, Rp 1/2 x 12, Rp 1/2 x 15, Rp 3/4 x 15, Rp 3/4 x 22 en Rp 1 x 22 mm.
917W	Knieknelfitting met muurplaat: binnendraad x knel. Rp 3/4 x 22 mm.
918	T-knelfitting: 12, 15, 22 en 28 mm.
918EB	T-knelfitting: 15 x 12 x 12, 22 x 12 x 15, 22 x 15 x 15, 28 x 15 x 22 en 28 x 22 x 22 mm.
918B	T-knelfitting: 15 x 12 x 15, 22 x 12 x 22, 22 x 15 x 22, 28 x 15 x 28 en 28 x 22 x 28 mm.
918E	T-knelfitting: 15 x 15 x 12, 22 x 22 x 12, 22 x 22 x 15, 28 x 28 x 15 en 28 x 28 x 22 mm.
918EE	T-knelfitting: 12 x 15 x 12, 15 x 22 x 15 en 22 x 28 x 22 mm.



923	Kruis knelfitting: 15 x 15 x 15 x 15 mm.
930	T-knelfitting: knel x binnendraad x knel. 15 x Rp 1/4 x 15, 15 x Rp 3/8 x 15, 15 x Rp 1/2 x 15, 22 x Rp 1/2 x 22, 22 x Rp 3/4 x 22, 28 x Rp 1/2 x 28 en 28 x Rp 1 x 28 mm.
930E	T-knelfitting: knel x knel x binnendraad. 15 x 15 x Rp 1/2, 22 x 22 x Rp 1/2, 22 x 22 x Rp 3/4 en 28 x 28 x Rp 1/2.
951	Eindknelfitting: 12, 15, 22 en 28 mm.

**Klemfittingen voor het verbinden van koperen pijpen volgens KE 5
in de kwaliteit half hard.**

Max. werkdruk: 200 mbar.

G 6243g	Overgangskoppeling met buitendraad. 15 x R1/2, 18 x R1/2, 22 x R1/2, 22 x R3/4, 28 x R1, 35 x R1 1/4, 42 x R1 1/2 en 54 x R2. Uitvoering: messing en brons.
G 6270g	Overgangskoppeling met binnendraad. 15 x Rp1/2, 18 x Rp1/2, 22 x Rp1/2, 22 x Rp3/4, 28 x Rp1, 35 x Rp1 1/4, 42 x Rp1 1/2 en 54 x Rp2. Uitvoering: messing en brons.
G 7270	Rechte koppeling. 15, 18, 22, 28, 35, 42 en 54 mm. Uitvoering: roodkoper.
G 7270 S	Overschuifmof. 15, 18, 22, 28, 35, 42 en 54 mm. Uitvoering: roodkoper.
G 7301	Eindkap. 12, 15, 18, 22, 28, 35, 42 en 54 mm. Uitvoering: roodkoper.
G 7243	Verloopstuk. 18 x 15, 22 x 15, 22 x 18, 28 x 15, 28 x 18, 28 x 22, 35 x 22, 35 x 28, 42 x 28, 42 x 35, 54 x 35 en 54 x 42 mm. Uitvoering: roodkoper.
G 7002a	Bocht 90°. 15, 18, 22, 28, 35, 42 en 54 mm. Uitvoering: roodkoper.
G 7041	Bocht 45°. 15, 18, 22, 28, 35, 42 en 54 mm. Uitvoering: roodkoper.
G 7001a	Bocht 90° met spie-eind. 15, 18, 22, 28, 35, 42 en 54 mm. Uitvoering: roodkoper.

G 7040	Bocht 45° met spie-eind. 15, 18, 22, 28, 35, 42 en 54 mm. Uitvoering: roodkoper.
G 7130	T-koppeling. 15, 18, 22, 28, 35, 42 en 54 mm. T-koppeling verloop. 18 x 15 x 18, 22 x 15 x 15, 22 x 15 x 22, 22 x 18 x 22, 22 x 22 x 15, 28 x 15 x 28, 28 x 18 x 28, 28 x 22 x 28, 35 x 22 x 35, 35 x 28 x 35, 42 x 28 x 42, 42 x 35 x 42 en 54 x 42 x 54 mm. Uitvoering: roodkoper.



productcertificate
K6383/05

Issued 15-03-2011
Replaces K6383/04
Page 1 of 6

Fittings with compression ends for use with copper tubes

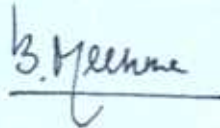
STATEMENT BY KIWA

With this product certificate, issued in accordance with the Kiwa Regulations for Product Certification, Kiwa declares that legitimate confidence exists that the products supplied by

Pegler Yorkshire Group Ltd.

complying with the technical specifications as laid down in this product certificate and marked with the Kiwa®-mark in the manner as indicated in this product certificate, on delivery, may be relied upon to comply with Kiwa evaluation guideline BRL-K639/02 "Fittings with compression ends for use with copper tubes".

Which covers the requirements of
EN 1254 "Copper and copper alloys - Plumbing fittings" and particularly
Part 2: Fittings with compression ends for use with copper tubes.



Bouke Meekma
Director Kiwa Nederland B.V.

Publication of the certificate is allowed.

Advice: consult www.kiwa.nl in order to ensure that this certificate is still valid.

Kiwa Nederland B.V.
Sir W. Churchill-laan 273
Postbus 70
2280 AB RIJSWIJK
The Netherlands

Tel. +31 70 414 44 00
Fax +31 70 414 44 20
E-mail info@kiwa.nl
www.kiwa.nl



Supplier

Pegler Yorkshire Group Ltd.
Haigh Park Road, Stourton
LS10 1RT Leeds
Great Britain
Tel. +44 113 270 1104
Fax +44 113 271 5275
www.yorkshirefittings.com

Certification process consists of initial and regular inspection of:

- quality system
- product

Fittings with compression end for use with copper tubes

PRODUCT SPECIFICATION				
Model K600 and model K900 Pro series compression fittings of the types as listed in the tables below.				
Tee coupling (ISO 7)		Coupling female thread (ISO 7)		
604	1/2 x 1/2 x 15	Kiwa only	612	10 x R _o 3/8
			612	10 x R _o 1/2
			612	15 x R _o 1/2
			612	22 x R _o 1/4
			612	22 x R _o 1
			612	28 x R _o 1/4
			612	28 x R _o 1
			912X	12 x R _o 3/8
			912X	12 x R _o 1/2
			912X	15 x R _o 3/8
			912X	15 x R _o 1/2
			912X	15 x R _o 3/4
			912X	22 x R _o 1/2
			912X	22 x R _o 3/4
			912X	22 x R _o 1
			912X	28 x R _o 1
Tank coupling:				
911TC X	15 x G1/2	Kiwa only		
911TC X	22 x G 3/4	Kiwa only		
911TC X	22 x G 1	Kiwa only		
911TC X	28 x G1	Kiwa only		
Straight coupling:		Reducer coupling:		
610	10	610	22 x 15	
610	15	610	28 x 15	
610	22	610	28 x 22	
610	28	910	12 x 10	
910X	12	910	15 x 10	Kiwa only
910X	15	910	15 x 12	
910X	22	910	22 x 15	
910X	28	910	28 x 22	
Coupling male thread connection (ISO 7)				
611	10 x R1/2			
611	10 x R1/4	Kiwa only		
611	10 x R3/8			
611	15 x R1/2	Kiwa only		
611	15 x R1/4			
611	15 x R3/4	Kiwa only		
611	22 x R1			
611	22 x R3/4			
611	28 x R1 1/4	Kiwa only		
611	28 x R1			
911X	12 x R1/2			
911X	12 x R1/4	Kiwa only		
911X	12 x R3/8			
911X	15 x R1/2			
911X	15 x R3/8			
911X	22 x R1			
911X	22 x R1/2			
911X	28 x R3/4			
Coupling male thread connection (ISO228)				
611P	15 x G1/2			Kiwa only
611P	22 x G1			Kiwa only
611P	22 x G3/4			Kiwa only
611P	28 x G1			Kiwa only
911PX	10 x G3/8			Kiwa only
911PX	12 x G3/8			Kiwa only
911PX	15 x G3/4			Kiwa only
611LB	15 x G1/2		Enlarged	Kiwa only
611LB	22 x G3/4		Enlarged	Kiwa only
611LB/ PC	22 x G3/4		Enlarged	Kiwa only
911LBX	22 x G3/4		Enlarged	Kiwa only
911LBX	28 x G1		Enlarged	Kiwa only

Fittings with compression end for use with copper tubes

PRODUCT SPECIFICATION			
Model K600 and model K900 Pro series compression fittings of the types as listed in the tables below.			
Elbow coupling			
615	10 x 10	Kiwa only	
615	15 x 15		
615	22 x 22		
615	28 x 28		
915X	12 x 12		
915X	15 x 15		
915X	22 x 22		
915X	28 x 28		
615S	15 x 15		
615S	22 x 22		
615S	28 x 28		
Elbow male thread connection (ISO 7)			
616	15 x R1/2		
616	15 x R3/4		
616	22 x R1		
616	22 x R3/4		
616	28 x R1		
916X	12 x R1/2		
916X	12 x R3/8		
916X	15 x R3/8	Kiwa only	
916X	22 x R1		
916X	22 x R3/4		
916X	28 x R1		
616LB	15 x 1/2	enlarged	Kiwa only
916LBX	22 x 3/4	enlarged	Kiwa only
Elbow with female thread connection (ISO 7)			
617	15 x R _c 1/2		
617	22 x R _c 1		
617	22 x R _c 1/2		
617	22 x R _c 3/4		
617	28 x R _c 1		
917X	15 x R _c 3/4		
917X	12 x R _c 1/2		
917X	12 x R _c 3/8		
917X	15 x R _c 3/8		
917X	22 x R _c 1		
917X	22 x R _c 3/4		
Reduced elbow			
615	15 x 10		
615	15 x 12		
615	22 x 15		
615	28 x 22		
Elbow male thread connection (ISO228)			
616P	15 x G1/2	Kiwa only	
616P	22 x G1	Kiwa only	
616P	22 x G3/4	Kiwa only	
616P	28 x G1	Kiwa only	
916PX	15 x G1/2	Kiwa only	
916PX	22 x G1	Kiwa only	
916PX	22 x G3/4	Kiwa only	
916PX	28 x G1	Kiwa only	
Wall elbow female thread connection (ISO 7)			
617W	15 x R _c 1/2		
617W	15 x R _c 3/4		
917WX	22 x R _c 3/4		
Tee			
618	10 x 10 x 10	Kiwa only	
618	15 x 15 x 15		
618	22 x 22 x 22		
618	28 x 28 x 28		
918X	12 x 12 x 12		
918X	15 x 15 x 15		
918X	22 x 22 x 22		
918X	28 x 28 x 28		
Tee reduced coupling			
618B	22 x 22 x 15		
918BX	15 x 15 x 12		
918BX	22 x 22 x 12		
918BX	28 x 28 x 15		
918BX	28 x 28 x 22		
618E	22 x 15 x 22		
918EX	15 x 12 x 15		
918EX	22 x 15 x 22		
918EX	28 x 15 x 28		
918EX	28 x 22 x 28		

Fittings with compression end for use with copper tubes

PRODUCT SPECIFICATION		
Model K600 and model K900 Pro series compression fittings of the types as listed in the tables below.		
Tee reduced coupling		Cross connection
618EB 22 x 15 x 15		623 15 x 22 x 15 x 15
618EB 28 x 15 x 15		623 15 x 22 x 15 x 22
918EBX 15 x 12 x 12		623 22 x 22 x 22 x 22
918EBX 22 x 15 x 12		923X 15 x 15 x 15 x 15
918EBX 28 x 15 x 22		
918EBX 28 x 22 x 22		
		End stop
		651 10 Kiwa only
		651 15
		651 22
		651 28
		951X 12
		951X 15
		951X 22
		951X 28
		Obtuse bend 45°
		652 15 x 15
		Sweep tee
		657 15 x 15 x 15
		657 22 x 22 x 22
		Corner tee 90°
		659 15 x 15 x 15
		659 22 x 15 x 15
		659 22 x 15 x 22
		659 22 x 22 x 22
Tee reduced coupling		
918EEX 12x12x15		
918EEX 15x15x22		
918EEX 22x22x28		
Tee Branch male thread connection (ISO 228)		
920HX 15 x 15 x G1/2		
920HX 22 x 22 x G3/4		
Tee Branch female thread connection (ISO7)		
930X 12 x 12 x R ₀ 3/8	Kiwa only	
930X 15 x 15 x R ₀ 1/4		
930X 15 x 15 x R ₀ 3/8		
930X 22 x 22 x R ₀ 1/2		
930X 22 x 22 x R ₀ 3/4		
930X 28 x 28 x R ₀ 1		
930X 28 x 28 x R ₀ 1/2		
Tee female thread connection (ISO 7)		
930EX 15 x R ₀ 1/2 x 15		
930EX 22 x R ₀ 1/2 x 22		
930EX 22 x R ₀ 3/4 x 22		
930EX 28 x R ₀ 1/2 x 28		
630W 15 x 15 x R ₀ 1/2	Kiwa only	
Offset tee		
631 15 x 15 x 15	Kiwa only	
631 22 x 22 x 15		

Fittings with compression end for use with copper tubes

PRODUCT SPECIFICATION

Model K600 and model K900 Pro series compression fittings of the types as listed in the tables below.

Reducer set

648	12 x 10
648	15 x 10
648	15 x 12
948X	15 x 10
948X	15 x 12
948X	22 x 12
948X	22 x 15
948X	28 x 15
948X	28 x 22
948X	35 x 15
948X	35 x 22
948X	35 x 28

5648	22 x 12
5648	22 x 15
5648	28 x 12
5648	28 x 15
5648	28 x 22
5648	35 x 15
5648	35 x 22
5648	35 x 28

The reducer sets referred to above may be used with types and models mentioned in this Certificate, but only:

- For Drinking Water appliances.
- As a complete fitting and not as a loose part.

Fittings with compression end for use with copper tubes

APPLICATION AND USE

The compression fittings are designed for the making of couplings in semi-hard copper tubes with external diameters in conformity with the evaluation guideline BRL-K760.

MARKING

The products are marked with the wordmark "KIWA".

Place of the mark:

- "KIWA" on the fitting.

Compulsory specifications:

- name or mark of manufacturer on the body captive nut;
- nominal size of the tube on the captive nut.

Method of marking:

- indelible;
 - visible after assembly.
-

RECOMMENDATIONS FOR CUSTOMERS:

1. Check at the time of delivery whether:
 - 1.1 the producer has delivery in accordance with the agreement;
 - 1.2 the mark and the marking method are correct;
 - 1.3 the products show no visible defects as a result of transport etc.
 2. If you should reject a product on the basis of the above, please contact:
 - 2.1 Pegler Yorkshire Group Ltd. in Doncaster, United Kingdom and, if necessary,
 - 2.2 Kiwa Nederland B.V.
 3. Consult the producer's processing guidelines for the proper storage and transport methods.
 4. Check whether this certificate is still valid by consulting www.1kiwa.com.
-

WRAS[®]

Water Regulations Advisory Scheme

This certifies that

PEGLER YORKSHIRE GROUP LTD.

has had the undermentioned product examined, tested and found, when correctly installed, to comply with the requirements of the United Kingdom Water Supply (Water Fittings) Regulations/Scottish Water Byelaws.

KUTERLITE K600 RANGE OF NON-MANIPULATIVE COMPRESSION FITTINGS FOR USE WITH COPPER TUBE

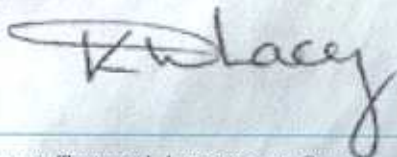
This certificate by itself is not evidence of a valid WRAS Approval. Confirmation of the current status of an approval must be obtained from the WRAS Directory (www.wras.co.uk/directory)

The product so mentioned will be listed in the Water Fittings and Materials Directory for a period until:

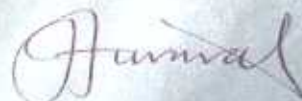
31 DECEMBER 2016

1112082

Certificate No.



Chairman, Test and Assessment Group



Secretary

WRAS
**APPROVED
PRODUCT**



ÉMI Építészeti Minőségellenőrző Innovációs Nonprofit Kft.

ÉMI ÉPÍTÉSÜGYI MINŐSÉGELLENŐRZŐ INNOVÁCIÓS
NONPROFIT KORLÁTOLT FELELŐSÉGŰ TÁRSASÁG

H-1113 Budapest, Diószegi út 37. Levélcím: II-1518 Budapest, Pf: 69.

Telefon: +36 (1) 372-6100 Fax: +36 (1) 386-8794

E-mail: info@emi.hu Honlap: http://www.emi.hu

ÉMI NON-PROFIT LIMITED LIABILITY COMPANY FOR QUALITY CONTROL AND INNOVATION IN BUILDING

ÉMI SOCIÉTÉ À BUT NON LUCRATIF POUR LE CONTRÔLE DE QUALITÉ ET L'INNOVATION DU BÂTIMENT. RESPONSABILITÉ LIMITÉE

ÉMI NON-PROFIT GESELLSCHAFT FÜR QUALITÄTSKONTROLLE UND INNOVATION IM BAUWESEN MIT BESCHRÄNKTER HAFTUNG

A-95/1994

UE: A-2298/2012

ÉME ÉPÍTŐIPARI MŰSZAKI ENGEDÉLY

A termék megnevezése: YORKSHIRE gyártmányú, kapilláris forrasztású idomok (forrasztóanyag betéttel és forrasztóanyag betét nélkül) K-600, K-700, K-900 sorozatú roppantógyűrűs idomok, „Teelite push” gyorskötő idomok, M-jelű présfejrel préselhető présidomok, forrasztóanyagok és szerelési kiegészítők

A termék tervezett felhasználási területe: Épületgépszeti vízellátás**, fűtéstechika és gázellátás

Kérelmező: YORKSHIRE FITTINGS GYÁRTÓ Kft.
mint az ÉME jogosultja HU-1106 Budapest, Maglódi út 16.

A termék gyártója: YORKSHIRE FITTINGS LTD.
Haigh Park Road Stourton Leeds;
YORKSHIRE FITTINGS GYÁRTÓ Kft.
HU-1106 Budapest, Maglódi út 16.

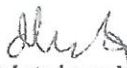
A termék ÉMI Nonprofit Kft. 5.5.4 gyorskötő idomok
szakrendi jelzete (SZRJ): 5.5.5 forrasztható idomok
5.5.7 sajtólással rögzített idomok
5.5.8.1 forrasztóanyagok

ÉME érvényesség kezdete: 2012-07-01

ÉME érvényesség vége*: 2017-07-01

** érvényes magyarországi egészségügyi engedéllyel és megfelelőségi tanúsítvánnyal alkalmazható




Dr. Matolcsy Károly
műszaki és tudományos igazgató

Az Építőipari Műszaki Engedély 8 oldalas és - db számozott, pecséttel ellátott mellékletet tartalmaz.

*Az ÉME érvényességének vége feltételhez kötött.

Az ÉME érvényessége az ÉMI Nonprofit Kft. honlapján (www.emi.hu) ellenőrizhető.

K13iA-II-04.(U)-2012.02.07.



Kitemark[®] Licence

No. KM 05505

The licence is granted to:

Yorkshire Fittings Gyártó Kft
H-1106 Budapest
Maglódi út 16
Budapest
Hungary

In respect of:

BS EN 1254/BS 864 Pt2
Copper and copper alloys - Plumbing fittings

This issues the right and licence to use the Kitemark in accordance with the Kitemark Licence Conditions of Contract governing the use of the Kitemark, as may be updated from time to time by The British Standards Institution, and as approved by the Registrar under the Trade Marks Act 1994 (the "Conditions"). All defined terms in this Licence shall have the same meaning as in the Conditions.

The use of the Kitemark is authorized in respect of the Product(s) detailed on this Licence provided at or from the above address.

For and on behalf of BSI:

Gary Fenton, Global Assurance Director

First Issued: **17/12/1971**

Latest Issue: **14/09/2012**



raising standards worldwide[™]

Page 1 of 8



This Licence remains the property of The British Standards Institution and shall be returned immediately upon request. To check its validity telephone +44 (0)845 080 9000

Information and contact: BSI, Kitemark Court, Davy Avenue, Knowlhill, Milton Keynes MK5 8PP. Tel: +44 845 080 9000. BSI Assurance UK Limited, registered in England under number 7805321, at 389 Chiswick High Road, London, W4 4AL, UK. A member of the BSI Group of Companies.



Kitemark[®] Licence

No. KM 05505

BS EN 1254 Copper and Copper Alloys - Copper Fittings:

BS EN 1254-2:1998 Compression ends for copper tube

BS EN 1254-4:1998 Other ends

Note. With the exception of marking, the products listed are also deemed to conform to the requirements of the obsolescent British Standard BS 864 Part 2.

Catalogue Number		Description	Product Range	
K600	K900 Pro		K600	K900 Pro
610	910	Straight Coupling	6mm	-
610	910	Straight Coupling	8mm	-
610	910	Straight Coupling	10mm	10mm
610	910	Straight Coupling	*12mm	12mm
610	910	Straight Coupling	15mm	15mm
610	910	Straight Coupling	*18mm	18mm
610	910	Straight Coupling	22mm	22mm
610	910	Straight Coupling	28mm	28mm
610	910	Straight Coupling	*35mm	35mm
610	910	Straight Coupling	*42mm	42mm
610	910	Straight Coupling	*54mm	54mm
610	910	Straight Coupling	8x6	-
610	910	Straight Coupling	10x8	-
610	910	Straight Coupling	*12x8	-
610	910	Straight Coupling	*12x10	12x10
610	910	Straight Coupling	*15x8	15x8
610	910	Straight Coupling	15x10	15x10
610	910	Straight Coupling	*15x12	15x12
610	910	Straight Coupling	*18x15	18x15
610	910	Straight Coupling	22x15	22x15
610	910	Straight Coupling	28x15	-
610	910	Straight Coupling	28x22	28x22

*Items in the K600 Range marked * are supplied from the K900 Range.

First Issued: **17/12/1971**

Latest Issue: **14/09/2012**

raising standards worldwide[™]

Page 2 of 8



This Licence remains the property of The British Standards Institution and shall be returned immediately upon request. To check its validity telephone +44 (0)845 080 9000

Information and contact: BSI, Kitemark Court, Davy Avenue, Knowlhill, Milton Keynes MK5 8PP. Tel: +44 845 080 9000. BSI Assurance UK Limited, registered in England under number 7805321, at 389 Chiswick High Road, London, W4 4AL, UK. A member of the BSI Group of Companies.



Kitemark[®] Licence

No. KM 05505

Catalogue Number		Description	Product Range	
K600	K900 Pro		K600	K900 Pro
611	911	Male Coupling	6x1/8"	-
611	911	Male Coupling	6x1/4"	-
611	911	Male Coupling	8x1/8"	-
611	911	Male Coupling	8x1/4"	-
611	911	Male Coupling	10x1/4"	-
611	911	Male Coupling	10x3/8"	-
611	911	Male Coupling	10x1/2"	-
611	911	Male Coupling	*12x1/4"	-
611	911	Male Coupling	*12x3/8"	12x3/8"
611	911	Male Coupling	*12x1/2"	12x1/2"
611	911	Male Coupling	15x1/4"	15x1/4"
611	911	Male Coupling	*15x3/8"	15x3/8"
611	911	Male Coupling	15x1/2"	15x1/2"
611	911	Male Coupling	15x3/4"	15x3/4"
611	911	Male Coupling	*18x1/2"	18x1/2"
611	911	Male Coupling	18x3/4"	18x3/4"
611	911	Male Coupling	*22x1/2"	22x1/2"
611	911	Male Coupling	22x3/4"	22x3/4"
611	911	Male Coupling	22x1"	22x1"
611	911	Male Coupling	*28x3/4"	28x3/4"
611	911	Male Coupling	28x1"	28x1"
611	911	Male Coupling	28x1 1/4"	-
611	911	Male Coupling	*35x1"	35x1"
611	911	Male Coupling	*35x1 1/4"	35x1 1/4"
611	911	Male Coupling	*42x1 1/2"	42x1 1/2"
611	911	Male Coupling	*54x2"	54x2"
611P	911P	Male Coupling	*8x1/4"	8x1/4"
611P	911P	Male Coupling	*10x3/8"	10x3/8"
611P	911P	Male Coupling	*12x3/8"	12x3/8"
611P	911P	Male Coupling	15x1/2"	15x1/2"
611P	911P	Male Coupling	*15x3/4"	15x3/4"
611P	911P	Male Coupling	22x3/4"	22x3/4"
611P	911P	Male Coupling	22x1"	22x1"
611P	911P	Male Coupling	28x1"	28x1"
611P	911P	Male Coupling	*35x1 1/4"	35x1 1/4"
611P	911P	Male Coupling	*42x1 1/2"	42x1 1/2"

*Items in the K600 Range marked * are supplied from the K900 Range.

First Issued: 17/12/1971

Latest Issue: 14/09/2012

raising standards worldwide[™]

Page 3 of 8



This Licence remains the property of The British Standards Institution and shall be returned immediately upon request. To check its validity telephone +44 (0)845 080 9000

Information and contact: BSI, Kitemark Court, Davy Avenue, Knowlhill, Milton Keynes MK5 8PP. Tel: +44 845 080 9000. BSI Assurance UK Limited, registered in England under number 7805321, at 389 Chiswick High Road, London, W4 4AL, UK. A member of the BSI Group of Companies.



Kitemark[®] Licence

No. KM 05505

Catalogue Number		Description	Product Range	
K600	K900 Pro		K600	K900 Pro
611TC	911LB	Long Tank Coupling	15x1/2"	-
611TC	911LB	Long Tank Coupling	22x3/4"	22x3/4"
611TC	911LB	Long Tank Coupling	*28x1"	28x1"
611LBPC	911LB	Long Tank Coupling	22x3/4"	-
611TC	911TC	Tank Coupling	*15x1/2"	15x1/2"
612	912	Female Coupling	8x1/4"	-
612	912	Female Coupling	10x3/8"	-
612	912	Female Coupling	10x1/2"	-
612	912	Female Coupling	*12x3/8"	12x3/8"
612	912	Female Coupling	*12x1/2"	12x1/2"
612	912	Female Coupling	*15x3/8"	15x3/8"
612	912	Female Coupling	15x1/2"	15x1/2"
612	912	Female Coupling	*15x3/4"	15x3/4"
612	912	Female Coupling	*18x1/2"	18x1/2"
612	912	Female Coupling	*18x3/4"	18x3/4"
612	912	Female Coupling	*22x1/2"	22x1/2"
612	912	Female Coupling	22x3/4"	22x3/4"
612	912	Female Coupling	22x1"	22x1"
612	912	Female Coupling	28x3/4"	-
612	912	Female Coupling	28x1"	28x1"
612	912	Female Coupling	*35x11/4"	35x11/4"
612	912	Female Coupling	*42x11/2"	42x11/2"
612	912	Female Coupling	*54x2"	54x2"
612ST		Female Tap Coupling	15x1/2"	-
612ST		Female Tap Coupling	15x3/4"	-
612ST		Female Tap Coupling	22x3/4"	-

*Items in the K600 Range marked * are supplied from the K900 Range.

First Issued: 17/12/1971

Latest Issue: 14/09/2012

raising standards worldwide[™]

Page 4 of 8



This Licence remains the property of The British Standards Institution and shall be returned immediately upon request. To check its validity telephone +44 (0)845 080 9000

Information and contact: BSI, Kitemark Court, Davy Avenue, Knowlhill, Milton Keynes MK5 8PP. Tel: +44 845 080 9000. BSI Assurance UK Limited, registered in England under number 7805321, at 389 Chiswick High Road, London, W4 4AL, UK. A member of the BSI Group of Companies.



Kitemark[®] Licence

No. KM 05505

Catalogue Number		Description	Product Range	
K600	K900 Pro		K600	K900 Pro
615	915	Elbow	15x10	-
615	915	Elbow	15x12	-
615	915	Elbow	22x15	-
615	915	Elbow	28x22	-
615	915	Elbow	6mm	-
615	915	Elbow	8mm	-
615	915	Elbow	10mm	-
615	915	Elbow	*12mm	12mm
615	915	Elbow	15mm	15mm
615	915	Elbow	22mm	22mm
615	915	Elbow	28mm	28mm
615	915	Elbow	*35mm	35mm
615	915	Elbow	*42mm	42mm
615	915	Elbow	*54mm	54mm
615S		Slow Bend	15mm	-
615S		Slow Bend	22mm	-
615S		Slow Bend	28mm	-
616	916	Male Elbow	22x1/2"	-
616	916	Male Elbow	22x3/4"	22x3/4"
616	916	Male Elbow	22x1"	22x1"
616	916	Male Elbow	28x1"	28x1"
616	916	Male Elbow	*35x11/4"	35x11/4"
616	916	Male Elbow	*42x11/2"	42x11/2"
616	916	Male Elbow	*54x2"	54x2"
616LB	916LB	Long Male Elbow	15x1/2"	-
616LB	916LB	Long Male Elbow	*22x3/4"	22x3/4"
617	917	Female Elbow	*12x3/8"	12x3/8"
617	917	Female Elbow	*12x1/2"	12x1/2"
617	917	Female Elbow	*15x3/8"	15x3/8"
617	917	Female Elbow	15x1/2"	15x1/2"
617	917	Female Elbow	*15x3/4"	15x3/4"
617	917	Female Elbow	*18x1/2"	18x1/2"
617	917	Female Elbow	*18x3/4"	18x3/4"
617	917	Female Elbow	22x1/2"	-
617	917	Female Elbow	22x3/4"	22x3/4"

*Items in the K600 Range marked * are supplied from the K900 Range.

First Issued: 17/12/1971

Latest Issue: 14/09/2012



raising standards worldwide[™]

Page 5 of 8

This Licence remains the property of The British Standards Institution and shall be returned immediately upon request. To check its validity telephone +44 (0)845 080 9000

Information and contact: BSI, Kitemark Court, Davy Avenue, Knowlhill, Milton Keynes MK5 8PP. Tel: +44 845 080 9000. BSI Assurance UK Limited, registered in England under number 7805321, at 389 Chiswick High Road, London, W4 4AL, UK. A member of the BSI Group of Companies.



Kitemark[®] Licence

No. KM 05505

Catalogue Number		Description	Product Range	
K600	K900 Pro		K600	K900 Pro
617	917	Female Elbow	22x1"	22x1"
617	917	Female Elbow	28x3/4"	-
617	917	Female Elbow	28x1"	28x1"
617	917	Female Elbow	*35x11/4"	35x11/4"
617	917	Female Elbow	*42x11/2"	42x11/2"
617W	917W	Backplate Elbow	15x1/2"	15x1/2"
617W	917W	Backplate Elbow	15x3/4"	-
617W	917W	Backplate Elbow	*18x1/2"	-
617W	917W	Backplate Elbow	22x1/2"	-
617W	917W	Backplate Elbow	*22x3/4"	22x3/4"
618	918	Equal Tee	6mm	-
618	918	Equal Tee	8mm	-
618	918	Equal Tee	10mm	10mm
618	918	Equal Tee	*12mm	12mm
618	918	Equal Tee	15mm	15mm
618	918	Equal Tee	*18mm	18mm
618	918	Equal Tee	22mm	22mm
618	918	Equal Tee	28mm	28mm
618B	918B	Reduced Branch Tee	*15x15x12	15x15x12
618B	918B	Reduced Branch Tee	*18x18x12	18x18x12
618B	918B	Reduced Branch Tee	*18x18x15	18x18x15
618B	918B	Reduced Branch Tee	22x22x15	22x22x15
618B	918B	Reduced Branch Tee	*22x22x18	22x22x18
618B	918B	Reduced Branch Tee	*28x28x15	28x28x15
618B	918B	Reduced Branch Tee	*28x28x22	28x28x22
618B	918B	Reduced Branch Tee	*35x35x15	35x35x15
618B	918B	Reduced Branch Tee	*35x35x22	35x35x22
618B	918B	Reduced Branch Tee	*35x35x28	35x35x28
618B	918B	Reduced Branch Tee	*42x42x22	42x42x22
618B	918B	Reduced Branch Tee	*42x42x28	42x42x28
618B	918B	Reduced Branch Tee	*54x54x28	54x54x28
618E	918E	Tee-One End Reduced	*15x12x15	15x12x15
618E	918E	Tee-One End Reduced	*18x12x18	-
618E	918E	Tee-One End Reduced	*18x15x18	-
618E	918E	Tee-One End Reduced	*22x12x22	-
618E	918E	Tee-One End Reduced	22x15x22	22x15x22

*Items in the K600 Range marked * are supplied from the K900 Range.

First Issued: 17/12/1971

Latest Issue: 14/09/2012



raising standards worldwide[™]

Page 6 of 8

This Licence remains the property of The British Standards Institution and shall be returned immediately upon request. To check its validity telephone +44 (0)845 080 9000

Information and contact: BSI, Kitemark Court, Davy Avenue, Knowlhill, Milton Keynes MK5 8PP. Tel: +44 845 080 9000. BSI Assurance UK Limited, registered in England under number 7805321, at 389 Chiswick High Road, London, W4 4AL, UK. A member of the BSI Group of Companies.



Kitemark[®] Licence

No. KM 05505

Catalogue Number		Description	Product Range	
K600	K900 Pro		K600	K900 Pro
618EB	918EB	Tee-One End & Branch Reduced	*15x12x12	15x12x12
618EB	918EB	Tee-One End & Branch Reduced	*18x12x12	-
618EB	918EB	Tee-One End & Branch Reduced	*18x15x12	-
618EB	918EB	Tee-One End & Branch Reduced	*18x15x15	-
618EB	918EB	Tee-One End & Branch Reduced	*22x15x12	-
618EB	918EB	Tee-One End & Branch Reduced	22x15x15	22x15x15
618EB	918EB	Tee-One End & Branch Reduced	28x15x15	-
618EB	918EB	Tee-One End & Branch Reduced	*28x15x22	-
618EB	918EB	Tee-One End & Branch Reduced	*28x22x15	-
618EB	918EB	Tee-One End & Branch Reduced	*28x22x22	28x22x22
620	920	Male End Tee	*15x1/2"x15	15x1/2"x15
620	920	Male End Tee	*22x3/4"x22	-
620	920	Male End Tee	*28x1"x28	-
623	923	Cross	*15x15x15x15	15x15x15x15
623	923	Cross	15x22x15x15	-
623	923	Cross	15x22x15x22	-
623	923	Cross	22x22x22x22	-
630	930	Female Branch Tee	*12x12x3/8"	-
630	930	Female Branch Tee	*15x15x1/4"	15x15x1/4"
630	930	Female Branch Tee	*15x15x3/8"	-
630	930	Female Branch Tee	*15x15x1/2"	15x15x1/2"
630	930	Female Branch Tee	18x18x1/2"	-
630	930	Female Branch Tee	*18x18x3/4"	-
630	930	Female Branch Tee	*22x22x1/2"	22x22x1/2"
630	930	Female Branch Tee	*22x22x3/4"	22x22x3/4"
630	930	Female Branch Tee	*28x28x1/2"	28x28x1/2"
630	930	Female Branch Tee	28x28x3/4"	-
630	930	Female Branch Tee	*28x28x1"	28x28x1"

*Items in the K600 Range marked * are supplied from the K900 Range.

First Issued: 17/12/1971

Latest Issue: 14/09/2012



raising standards worldwide[™]

Page 7 of 8

This Licence remains the property of The British Standards Institution and shall be returned immediately upon request. To check its validity telephone +44 (0)845 080 9000

Information and contact: BSI, Kitemark Court, Davy Avenue, Knowlhill, Milton Keynes MK5 8PP. Tel: +44 845 080 9000. BSI Assurance UK Limited, registered in England under number 7805321, at 389 Chiswick High Road, London, W4 4AL, UK. A member of the BSI Group of Companies.



Kitemark[®] Licence

No. KM 05505

Catalogue Number		Description	Product Range	
K600	K900 Pro		K600	K900 Pro
650	950	Tank Connector	15mm	15mm
650	950	Tank Connector	22mm	22mm
650	950	Tank Connector	28mm	28mm
650	950	Tank Connector	*35mm	35mm
650	950	Tank Connector	*42mm	42mm
650	950	Tank Connector	*54mm	54mm
651	951	Stop End	6mm	-
651	951	Stop End	8mm	-
651	951	Stop End	10mm	-
651	951	Stop End	*12mm	12mm
651	951	Stop End	15mm	15mm
651	951	Stop End	*18mm	18mm
651	951	Stop End	22mm	22mm
651	951	Stop End	28mm	28mm
651	951	Stop End	*35mm	35mm
651	951	Stop End	*42mm	42mm
657		Sweep Tee	15mm	-
657		Sweep Tee	22mm	-

*Items in the K600 Range marked * are supplied from the K900 Range.

First Issued: 17/12/1971

Latest Issue: 14/09/2012

raising standards worldwide[™]

Page 8 of 8



This Licence remains the property of The British Standards Institution and shall be returned immediately upon request. To check its validity telephone +44 (0)845 080 9000

Information and contact: BSI, Kitemark Court, Davy Avenue, Knowlhill, Milton Keynes MK5 8PP. Tel: +44 845 080 9000. BSI Assurance UK Limited, registered in England under number 7805321, at 389 Chiswick High Road, London, W4 4AL, UK. A member of the BSI Group of Companies.



CERTIFIKÁT VÝROBKU

č: AO 202/C5/2006/reg. č: **B-30-00083-06**

V souladu s ustanovením § 5 odst. 2 nařízení vlády č. 163/2002 Sb., kterým se stanoví technické požadavky na vybrané stavební výrobky, ve znění pozdějších změn a doplňků, autorizovaná osoba potvrzuje, že u stavebních výrobků:

Tvarovky pro spoje trubek sevřením

typové označení:

Kuterlite série K600
Kuterlite série K900
bližší specifikace výrobků je uvedena na 2. a 3. straně

výrobce:

YORKSHIRE Fittings Gyártó Kft.
Maglódi út 16., H-1106 Budapešť
Maďarsko

prezkoumala podklady předložené výrobcem, provedla počáteční zkoušku typu výrobku na vzorku, posoudila systém řízení výroby a zjistila, že uvedené výrobky splňují základní požadavky nařízení vlády č. 163/2002 Sb., ve znění pozdějších změn a doplňků. Při posuzování shody použila autorizovaná osoba následující normativní dokumenty:

ČSN EN 1254-2:2000, ČSN EN 1254-4:2000 a vyhlášku č. 409/2005 Sb.

Autorizovaná osoba zjistila, že systém řízení výroby odpovídá příslušné technické dokumentaci podle § 5 odst. 1 písm. d) a zabezpečuje, aby výrobky uváděné na trh splňovaly požadavky stanovené výše uvedenými určenými normami, technickými předpisy a odpovídaly technické dokumentaci podle § 4 odst. 3.

Nedílnou součástí tohoto certifikátu je závěrečný protokol č. 30-5367 ze dne 2006-02-23, který obsahuje závěry zjišťování, ověřování, výsledky zkoušek a základní popis, nezbytné pro identifikaci certifikovaných výrobků.

Tento certifikát zůstává v platnosti po dobu, po kterou se požadavky stanovené určenými normami, technickými předpisy, na které byl uveden odkaz nebo výrobní podmínky v místě výroby či systém řízení výroby, výrazně nezmění.

Autorizovaná osoba provádí nejméně jedenkrát za 12 měsíců dohled nad řádným fungováním systému řízení výroby v místě výroby, odebírá vzorky výrobků v místě výroby, provádí jejich zkoušky a posuzuje, zda vlastnosti výrobků odpovídají určeným normám a technickým předpisům podle ustanovení § 5 odst. 4 výše uvedeného nařízení vlády.

Brno 2006-02-23




Ing. Petr Mašek
ředitel

Specifikace výrobků:

Tvarovky se vyrábí ze slitin mědi a svěrný přípoj může být kombinován s pájecími nebo závitovými konci.

Účel použití: - pro nezakryté domácí a komerční instalace uvnitř nebo vně budov a to ke kompletaci rozvodů vody (včetně vody pitné podle vyhlášky č. 252/2004 Sb.), otopné vody, stlačeného vzduchu a jiných neagresivních tekutin, vedených měděnými trubkami. Pro použití na rozvody tekutin jsou určeny tvarovky o rozměrech od 6 mm do 108 mm. Tvarovky do 54 mm používají k sevření matice, nad 54 mm se používají příruby se šrouby.

Maximální teploty a přetlaky:

jmenovitý průměr konce tvarovky	pracovní teplota				
	min. -15 °C	30 °C	65 °C	110 °C	max. 120 °C
od 6 mm do 54 mm včetně	16 bar	16 bar	10 bar	6 bar	5 bar
nad 54 mm do 108 mm včetně	10 bar	10 bar	6 bar	4 bar	3 bar

Typy:

- K604 - T odbočka se závit (TF x C x TM) - $\frac{1}{2} \times 15 \times \frac{1}{2}$
- K609 - přímá pájecí (C x SF) - 8 + 10 x 15
- K610 - přímá (C x C) - 6 + 108
- K610 - přímá redukováná (C x C) - 8 + 28 x 6 + 22
- K610AC - přímá odvzdušňovací (C x C) - 15 + 22
- K610BP - přímá opravná (C x C) - 15 x L = 80
- K610IM - přímá přechodová (C x C) - $\frac{3}{4} \times 22$, 3×76 , 4×108
- K611 - přímá se závit (C x TM) - 6 + 108 x $\frac{1}{4}$ + 4
- K611P - přímá se závit a těsnicí plochou (C x TM) - 8 + 54 x $\frac{1}{4}$ + 2
- K611LB - přímá se závit nádržová prodloužená (C x TM) - 15 + 28 x $\frac{1}{2}$ + 1
- K611LBPC - přímá se závit nádržová prodloužená s mosazným těsněním (C x TM) - 22 x $\frac{1}{4}$
- K611TC - přímá se závit nádržová (C x TM) - 15 + 76 x $\frac{1}{2}$ + 3
- K612 - přímá přechodová (C x TF) - 8 + 76 x $\frac{1}{4}$ + 3
- K612ST - přímá přechodová (C x TF) - 8 + 22 x $\frac{1}{2}$ + $\frac{3}{4}$
- K612TN - přímá přechodová kuželová těsnicí plocha s převlečnou maticí (C x TF) - 22 x 1
- K614 - koleno se šroubením a se závit pro radiátor (C x TM) - 8 + 15 x $\frac{1}{2}$
- K615 - koleno (C x C) - 6 + 108
- K615 - koleno redukováné (C x C) - 15 + 28 x 10 + 22
- K615AC - koleno odvzdušňovací (C x C) - 15 + 22
- K615S - oblouk 90° (C x C) - 15 + 28
- K616 - koleno se závit (C x TM) - 12 + 87 x $\frac{3}{8}$ + 2 $\frac{1}{2}$
- K616P - koleno se závit a těsnicí plochou (C x TM) - 15 + 35 x $\frac{1}{2}$ + 1 $\frac{1}{4}$
- K616LB - koleno se závit a těsnicí plochou prodloužená (C x TM) - 15 + 22 x $\frac{1}{2}$ + $\frac{3}{4}$
- K617 - koleno se závit (C x TF) - 12 + 42 x $\frac{3}{8}$ + 1 $\frac{1}{2}$
- K617W - nástěnné koleno se závit (C x TF) - 15 + 22 x $\frac{1}{2}$ + $\frac{3}{4}$
- K617TN - rohová přechodová kuželová těsnicí plocha s převlečnou maticí (C x TF) - 22 x 1
- K618 - T odbočka (C x C x C) - 6 + 108
- K618B - T odbočka redukováná (C x C x C) - 15 + 76 x 15 + 76 x 12 + 54
- K618E - T odbočka redukováná (C x C x C) - 15 + 28 x 12 + 22 x 15 + 28
- K618EB - T odbočka redukováná (C x C x C) - 15 + 28 x 12 + 22 x 12 + 22
- K618EE - T odbočka redukováná (C x C x C) - 12 + 22 x 12 + 22 x 15 + 28
- K620 - T odbočka přechodová se závit (C x TM x C) - 15 + 22 x $\frac{1}{2}$ + $\frac{3}{4}$ x 15 + 22
- K620H - T odbočka přechodová se závit (C x C x TM) - 15 x 15 x $\frac{1}{2}$
- K623 - kříž (C x C x C x C) - 15 a 22
- K623 - kříž redukováný (C x C x C x C) - 15 x 22 x 15 x 15 a 15 x 22 x 15 x 22
- K626 - přímá přechodová s převlečnou maticí (C x TF) - 15 a 22 x $\frac{1}{2}$ a $\frac{3}{4}$
- K627 - koleno přechodové s převlečnou maticí (C x TF) - 15 x $\frac{1}{2}$ a 22 x $\frac{1}{2}$ a $\frac{3}{4}$
- K630 - T odbočka přechodová se závit (C x C x TF) - 15 + 28 x 15 + 28 x $\frac{1}{4}$ + 1
- K630E - T odbočka přechodová se závit (C x TF x C) - 15 + 28 x $\frac{1}{2}$ + $\frac{3}{4}$ x 15 + 28
- K630W - nástěnná T odbočka přechodová se závit (C x C x TF) - 15 x 15 x $\frac{1}{2}$
- K631 - T odskok (C x C x C) - 15 a 22 x 22 x 15
- K635AC - odvzdušnění (C) - 15

pokračování na 3. straně

pokračování ze 2. strany

- K640 – adaptér (C x TM) – 15 ÷ 22 x ½ ÷ ¾
- K641 – adaptér (C x TF) – 12 ÷ 28 x ¾ ÷ 1
- K647 – redukce tvarovka x trubka – 15 ÷ 28 x 8 ÷ 22
- K648 – redukční souprava tvarovka x trubka – 8 ÷ 54 x 6 ÷ 42
- K650 – nádržová s přírubou (C) – 15 ÷ 54
- K651 – zátka (C) – 6 ÷ 108
- K652 – koleno 45° (C x C) – 15
- K653 – vybočení přímé (C x C) – 15 a 22
- K657 – T koleno (C x C x C) – 15 a 22
- K659 – T odbočka rohová (C x C x C) – 15 a 22 x 15 a 22 x 15 a 22
- K669 – adaptér svěrného konce na závitový (C x TM) – 15 x ½
- K672 – zátka plná na svěrný konec (C) – 15 ÷ 42
- K910 – přímá (C x C) – 10 ÷ 108
- K910 – přímá redukováná (C x C) – 12 ÷ 28 x 8 ÷ 22
- K910IM – přímá přechodová (C x C) – ¾" x 22, 3" x 76, 4" x 108
- K911 – přímá se závitem (C x TM) – 12 ÷ 108 x ¼ ÷ 4
- K911P – přímá se závitem a těsnicí plochou (C x TM) – 8 ÷ 54 x ¼ ÷ 2
- K911LB – přímá se závitem nádržová prodloužená (C x TM) – 22 x ¼ a 28 x 1
- K911TC – přímá se závitem nádržová (C x TM) – 15 ÷ 76 x ½ ÷ 3
- K912 – přímá přechodová (C x TF) – 12 ÷ 76 x ¾ ÷ 3
- K915 – koleno (C x C) – 12 ÷ 108
- K916 – koleno se závitem (C x TM) – 12 ÷ 67 x ¾ ÷ 2½
- K916P – koleno se závitem a těsnicí plochou (C x TM) – 15 ÷ 35 x ½ ÷ 1¼
- K916LB – koleno se závitem a těsnicí plochou prodloužené (C x TM) – 22 x ¾
- K917 – koleno se závitem (C x TF) – 12 ÷ 42 x ¾ ÷ 1½
- K917W – nástěnné koleno se závitem (C x TF) – 15 x ½ a 22 x ¾
- K918 – T odbočka (C x C x C) – 10 ÷ 108
- K918B – T odbočka redukováná (C x C x C) – 15 ÷ 76 x 15 ÷ 76 x 12 ÷ 54
- K918E – T odbočka redukováná (C x C x C) – 15 ÷ 28 x 12 ÷ 22 x 15 ÷ 28
- K918EB – T odbočka redukováná (C x C x C) – 15 ÷ 28 x 12 ÷ 22 x 12 ÷ 22
- K918EE – T odbočka redukováná (C x C x C) – 12 ÷ 22 x 12 ÷ 22 x 15 ÷ 28
- K920 – T odbočka přechodová se závitem (C x TM x C) – 15 x ½ x 15 a 22 x ¾ x 22
- K920H – T odbočka přechodová se závitem (C x C x TM) – 15 x 15 x ½
- K923 – kříž (C x C x C x C) – 15
- K926 – přímá přechodová s převlečnou maticí (C x TF) – 15 a 22 x ½ a ¾
- K927 – koleno přechodové s převlečnou maticí (C x TF) – 15 x ½ a 22 x ¾
- K930 – T odbočka přechodová se závitem (C x C x TF) – 15 ÷ 28 x 15 ÷ 28 x ¼ ÷ 1
- K930E – T odbočka přechodová se závitem (C x TF x C) – 15 ÷ 28 x ½ ÷ ¾ x 15 ÷ 28
- K940 – adaptér (C x TM) – 22 x ½ ÷ ¾
- K941 – adaptér (C x TF) – 12 ÷ 28 x ¾ ÷ 1
- K947 – redukce tvarovka x trubka – 15 ÷ 28 x 8 ÷ 22
- K948 – redukční souprava tvarovka x trubka – 18 ÷ 54 x 12 ÷ 42
- K950 – nádržová s přírubou (C) – 15 ÷ 54
- K951 – zátka (C) – 12 ÷ 108
- K953 – vybočení přímé (C x C) – 15 a 22
- K972/K1772 – zátka plná na svěrný konec (C) – 15, 18 (¾) ÷ 42(1¼)
- K1870 – Kufit adaptér (C x C) – 15 ÷ 42, 22 ÷ 28 x 15 ÷ 22

Jmenovitý průměr konce tvarovky = vnější průměr připojované trubky v mm: 6, 8, 10, 12, 15, 18, 22, 28, 35, 42, 54, 67, 76, 108.

Velikost závitů v palcích: ¼, ½, ¾, 1, 1¼, 1½, 2, 2½, 3, 4 - závit podle ČSN EN 10226-1:2005 (ČSN ISO 7-1:1996) nebo ČSN EN ISO 228-1:2003 podle druhu spoje.

Velikost závitů převlečné matice v palcích: ½, ¾ - závit podle ČSN EN ISO 228-1:2003, tvarovka má konec pro ploché těsnění.

C = svěrný spoj
S = pájený spoj
T = závit
F = vnitřní
M = vnější
L = délka tvarovky



X-ON Electronics

Largest Supplier of Electrical and Electronic Components

Click to view similar products for [kuterlite](#) manufacturer:

Other Similar products are found below :

[Kuterlite](#)