

C10449_Tina-O-Plus-W for Osram Platinum / Dragon Plus LEDs

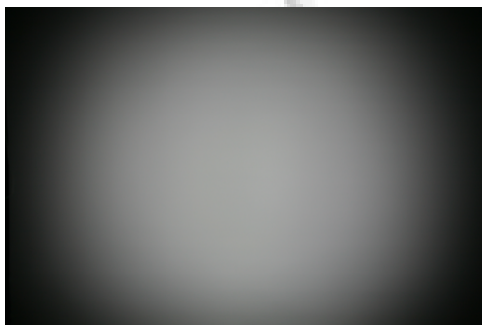


- Lens material optical grade PMMA with high UV and temperature resistance (105°C/220°F).
- High optical efficiency, >80%
- Very uniform and visually pleasing beam shape
- Designed especially for indoor applications
- Attaching of the lens holder directly on the Platinum / Dragon Plus package by snap fits. For detailed mounting information, please look at the drawing and the photographs
- Very small and compact dimensions: Diameter 10.5 mm, height 7 mm

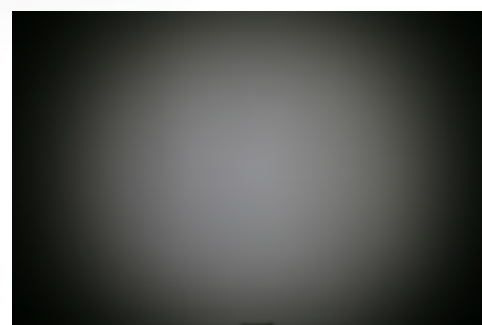
LENS TYPES

| NAME | ORDERING CODE | FWHM Angle with Golden Dragon+ |
|------------------|----------------------|---------------------------------|
| TINA-O-Plus Wide | C10449_Tina-O-Plus-W | ±36° |
| | | FWHM Angle with Platinum Dragon |
| | | ±37° |

MEASUREMENT DATA & PHOTOGRAPHS



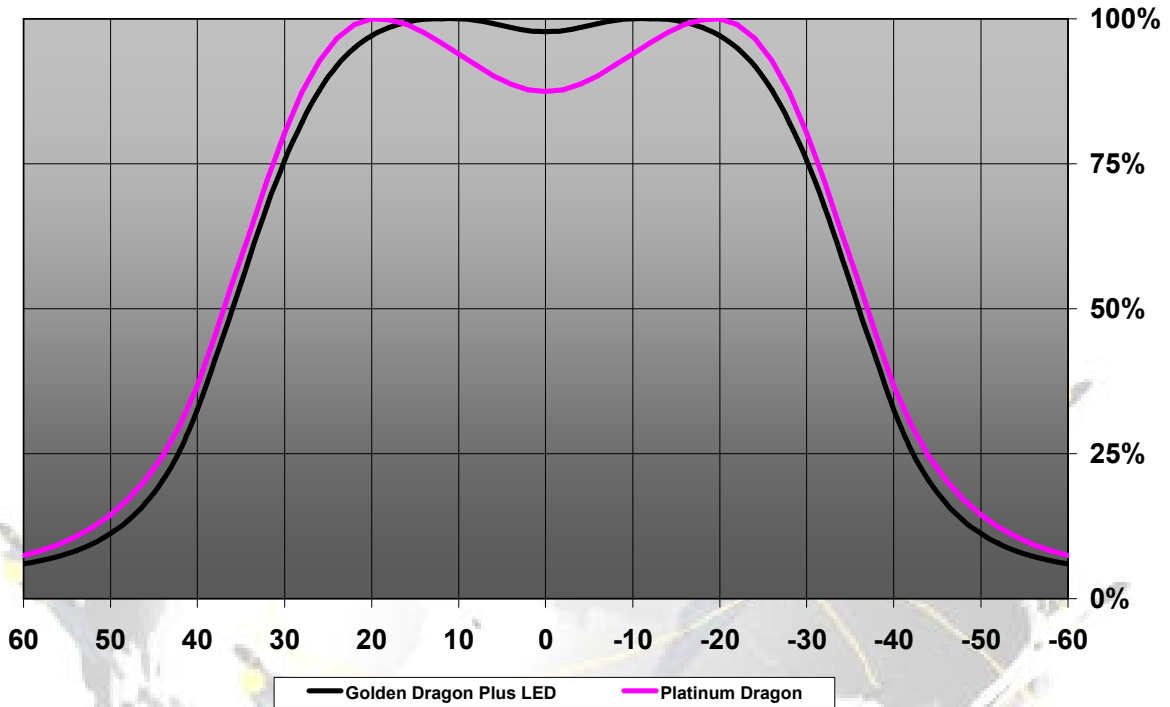
C10449_Tina-O-Plus-W (Golden Dragon plus)



C10449_Tina-O-Plus-W (Platinum Dragon)

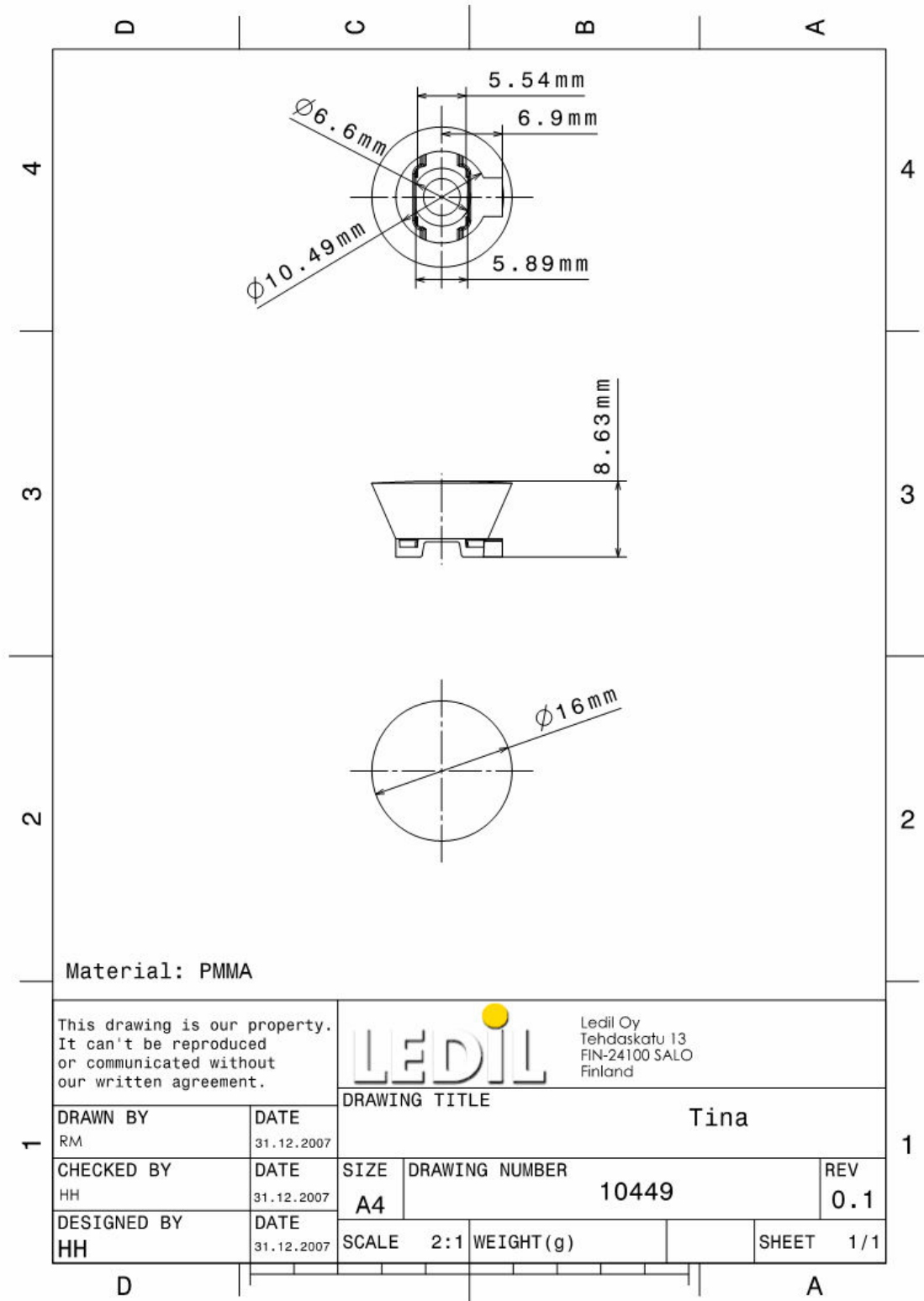
© Ledil Oy – PRELIMINARY - Subject to change without prior notice

Relative Intensity of C10449_Tina-O-Plus-W



© Ledil Oy – PRELIMINARY - Subject to change without prior notice

DIMENSIONS & PCB LAYOUT



© Ledil Oy – PRELIMINARY - Subject to change without prior notice

X-ON Electronics

Largest Supplier of Electrical and Electronic Components

Click to view similar products for [LED Lenses](#) category:

Click to view products by [Ledil](#) manufacturer:

Other Similar products are found below :

[131A-303G](#) [131A-304R](#) [139A-403R](#) [139A-403A](#) [160A-604R](#) [160A-604Y](#) [SMB_200_GTP](#) [SMQ_250_ATP](#) [SMS_172_RTP](#) [SQB_400_ATP](#)
[SSN-LX13049L-CD](#) [SSN-LX18754A](#) [SSN-LX18754C](#) [2817](#) [CLR_301_YTP](#) [CMC_313_ATP](#) [3121](#) [3124](#) [3125](#) [39-30-W03](#) [4344](#) [4623](#)
[4745](#) [4747](#) [3111](#) [3114](#) [3115](#) [3121](#) [3122](#) [3124](#) [3125](#) [4327](#) [4743](#) [4745](#) [4752](#) [4757](#) [SSN-LX690L1-C](#) [SQL_360_YTP](#) [SMQ_250_BTP](#) [3114](#)
[3113](#) [CMS444CTP](#) [1125-227-000](#) [4317](#) [4347](#) [4741](#) [4316](#) [4343](#) [4345](#) [4345](#)