

LAURA-XP lenses for CREE XP-E LEDs



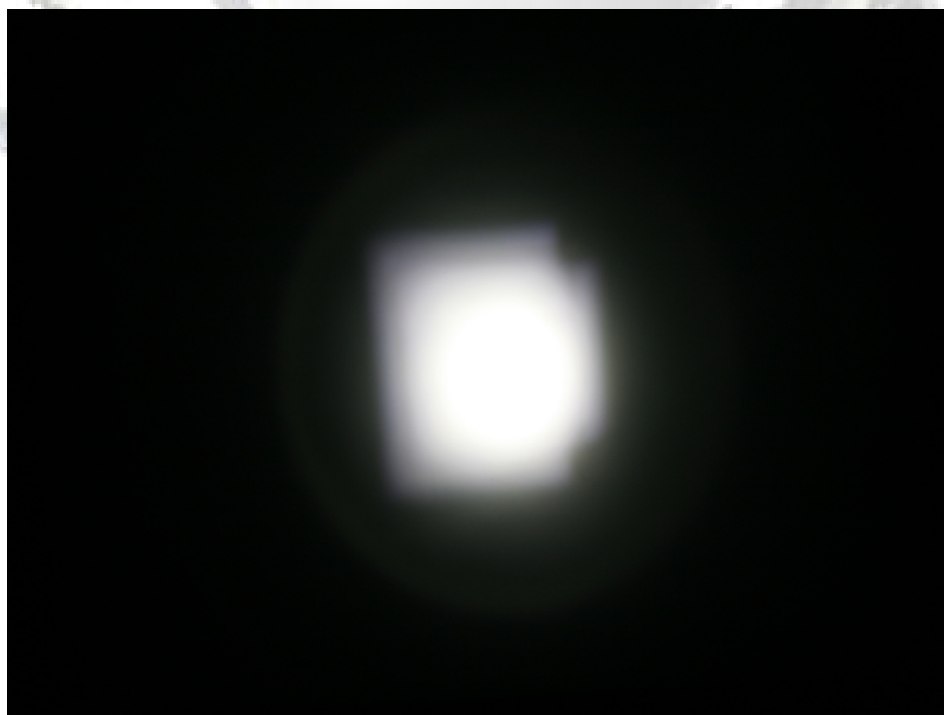
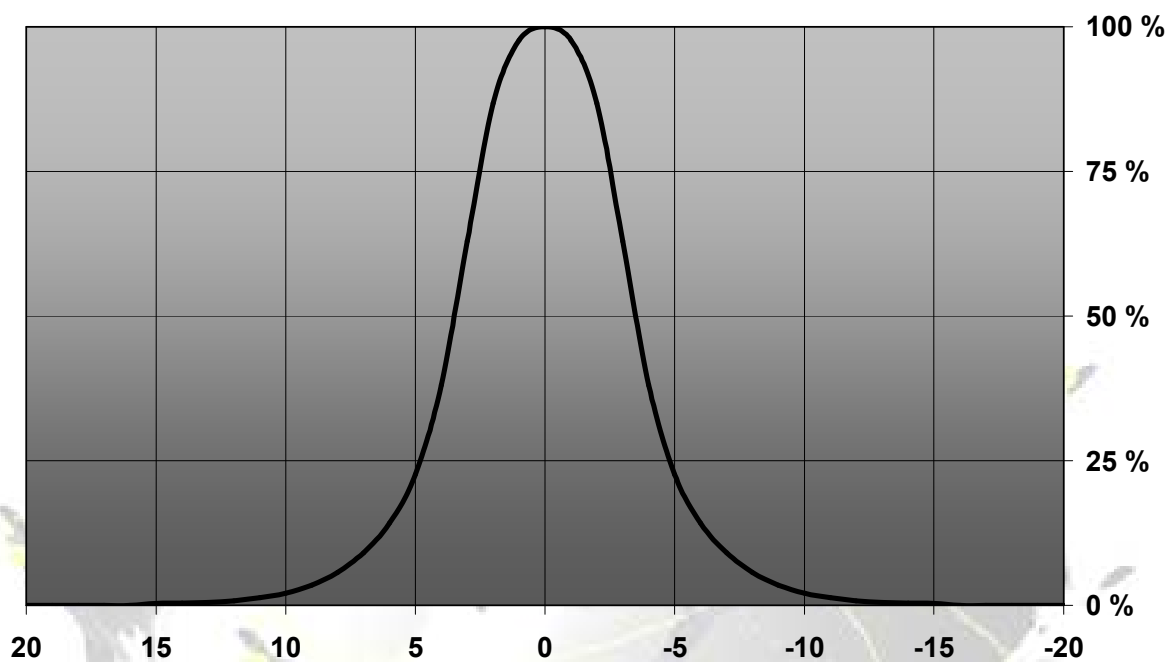
- Designed & optimized for Cree XP-E series of LEDs
- Lens material optical grade PMMA with high UV and temperature resistance (105°C/220°F). Allows use of high current and temperature conditions.
- Best available optical efficiency, up to 90%, with an extremely good cutoff of light
- Integrated holder. Fastening to heat sink with a PU foam adhesive tape of automotive grade
- Please check fastening details from this link:
(http://www.ledil.com/datasheets/DataSheet_TAPE.pdf)
- Compact dimensions 21.6 x 21.6 mm. Square form enables easy build of matrix without any gaps between lenses.

LENS TYPES

NAME	ORDERING CODE	FWHM Angle
LAURA REAL SPOT	CA11353_Laura-RS-XP-tape	±3.5°
LAURA SMOOTH SPOT	CA11643_Laura-SS-XP-tape	Coming soon
LAURA DIFFUSER	CA11360_Laura-D-XP-tape	±7°
LAURA MEDIUM	CA11355_Laura-M-XP-tape	Coming soon
LAURA OVAL	CA11365_Laura-O-XP-tape	Coming soon

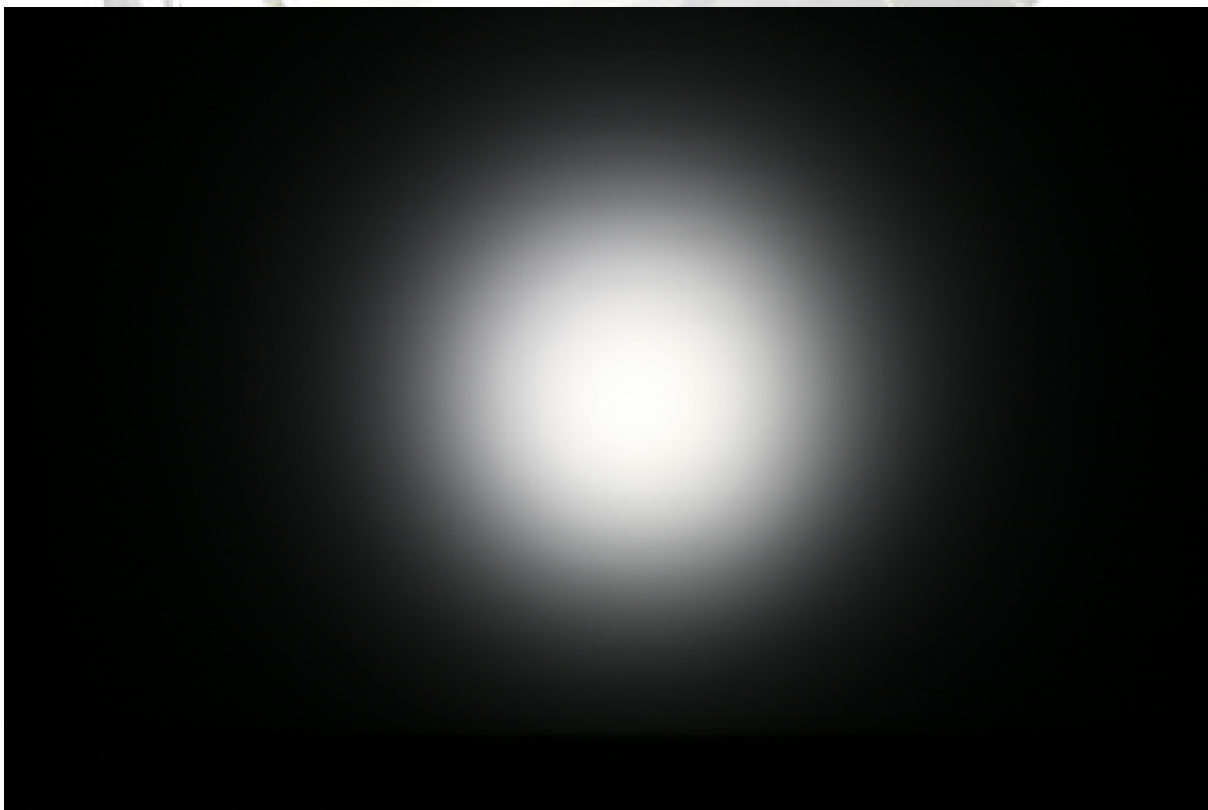
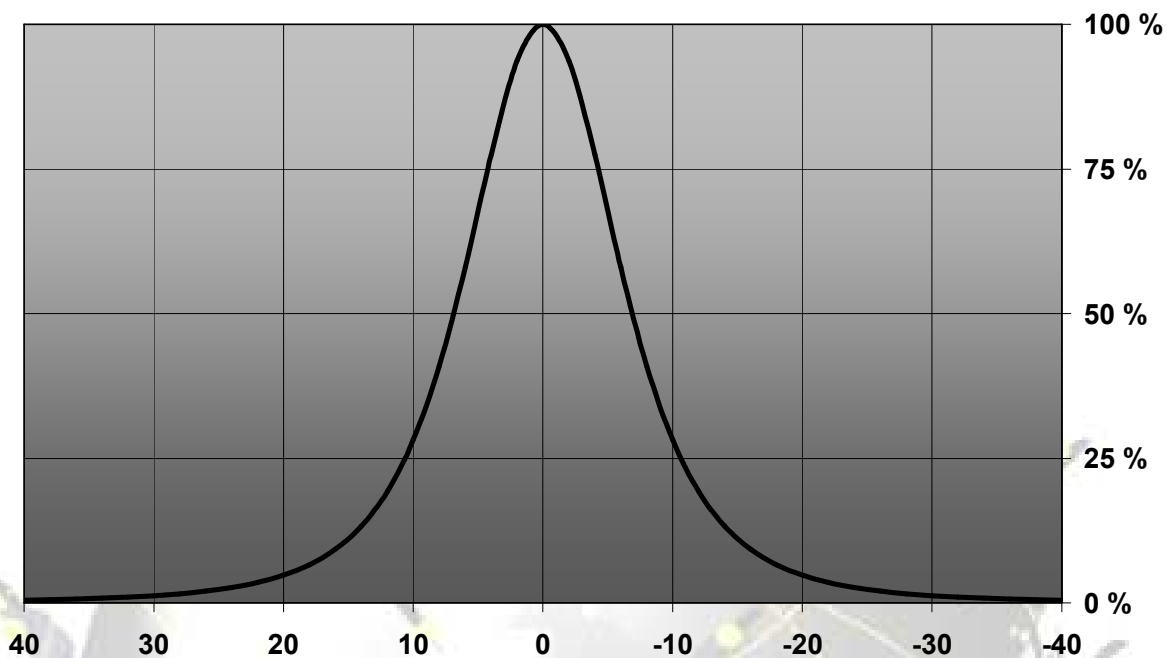
MEASUREMENTS

Relative Intensity of CA11353_Laura-RS-XP-tape



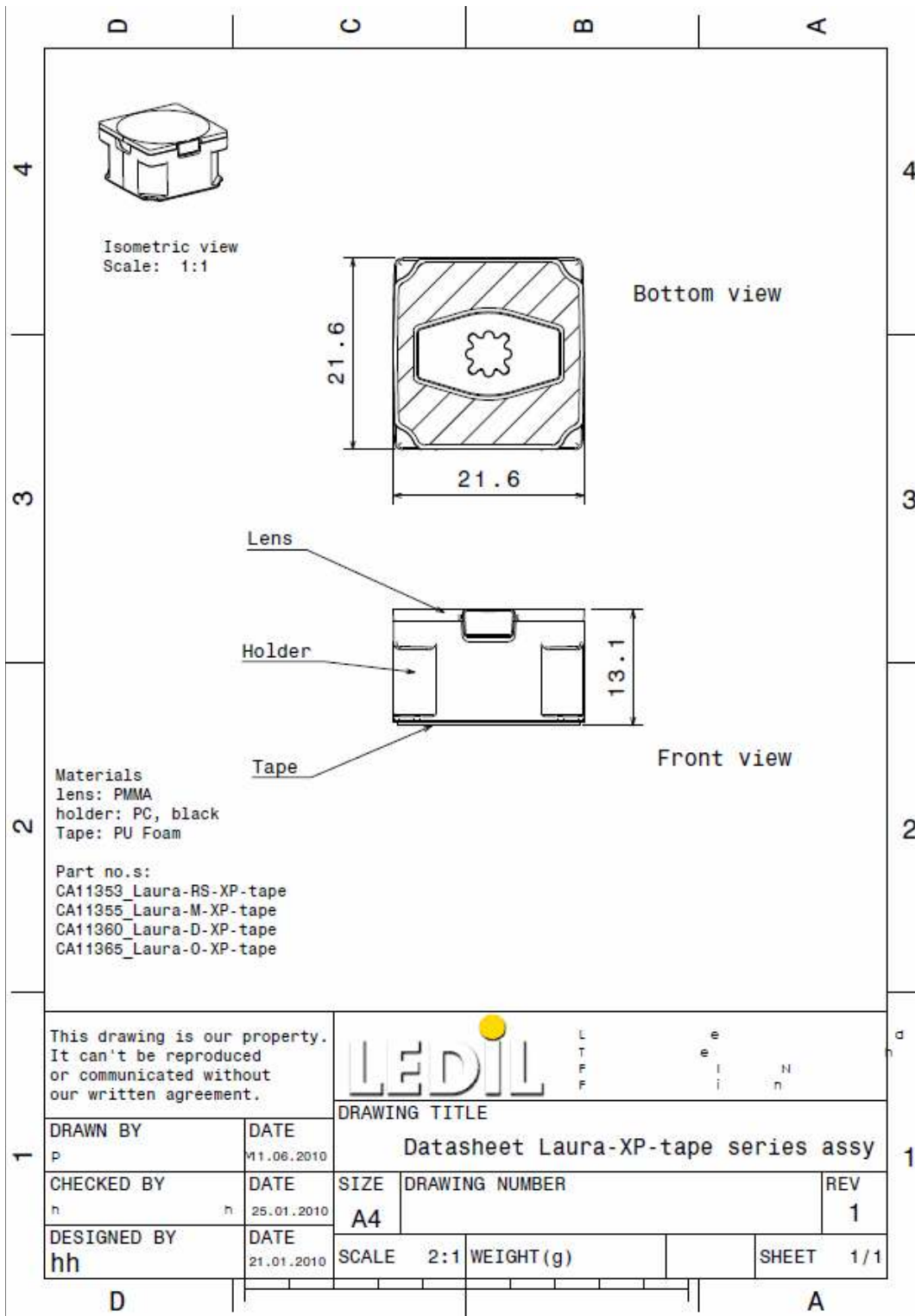
© Ledil Oy – PRELIMINARY - Subject to change without prior notice

Relative intensity of CA11360_Laura-D-XP-tape



© Ledil Oy – PRELIMINARY - Subject to change without prior notice

DRAWINGS



This drawing is our property.
It can't be reproduced
or communicated without
our written agreement.



L T F F
e i n
i n

DRAWING TITLE

DRAWN BY p		DATE 11.06.2010		Datasheet Laura-XP-tape series assy			
CHECKED BY h		DATE 25.01.2010		SIZE A4	DRAWING NUMBER		REV 1
DESIGNED BY hh		DATE 21.01.2010		SCALE 2:1	WEIGHT(g)	SHEET 1/1	

X-ON Electronics

Largest Supplier of Electrical and Electronic Components

Click to view similar products for [LED Lenses](#) category:

Click to view products by [Ledil](#) manufacturer:

Other Similar products are found below :

[131A-303G](#) [131A-304R](#) [139A-403R](#) [139A-403A](#) [160A-604R](#) [160A-604Y](#) [SMB_200_GTP](#) [SMQ_250_ATP](#) [SMS_172_RTP](#) [SQB_400_ATP](#)
[SSN-LX13049L-CD](#) [SSN-LX18754A](#) [SSN-LX18754C](#) [2817](#) [CLR_301_YTP](#) [CMC_313_ATP](#) [3121](#) [3124](#) [3125](#) [39-30-W03](#) [4344](#) [4623](#)
[4745](#) [4747](#) [3111](#) [3114](#) [3115](#) [3121](#) [3122](#) [3124](#) [3125](#) [4327](#) [4743](#) [4745](#) [4752](#) [4757](#) [SSN-LX690L1-C](#) [SQL_360_YTP](#) [SMQ_250_BTP](#) [3114](#)
[3113](#) [CMS444CTP](#) [1125-227-000](#) [4317](#) [4347](#) [4741](#) [4316](#) [4343](#) [4345](#) [4345](#)