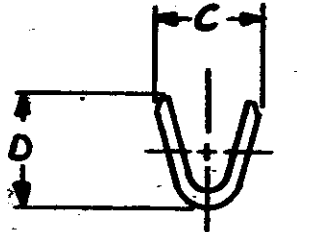
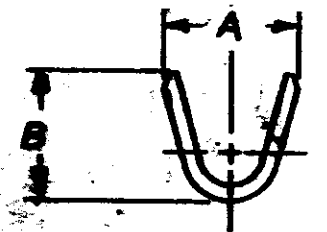
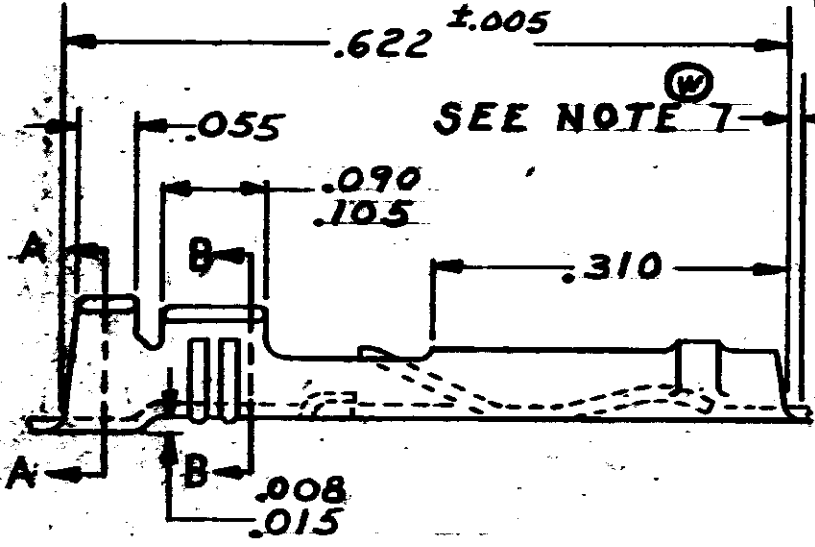
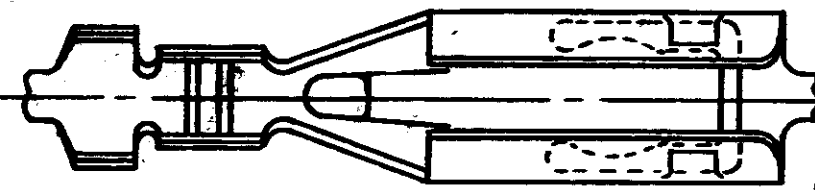


© 1962 BY AMP INCORPORATED. ALL RIGHTS RESERVED. AMP PRODUCTS COVERED BY PATENTS AND/OR PATENTS PENDING.

NOTE:

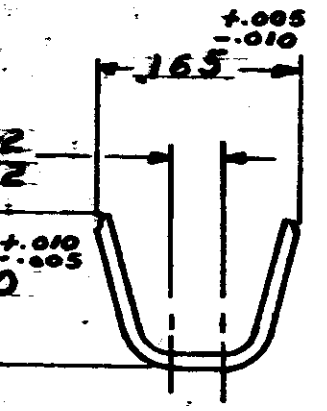
1. FOR CRIMPING INFORMATION SEE ENGR. SPEC. 108-9, 201.
2. AFTER ASSEMBLY INTO AND EXTRACTION FROM RECEPTACLE HOUSING THIS DIM. MAY GO TO A MIN. OF .050.
3. FOR SUPPLEMENTAL SPECIFICATIONS SEE 108-9, 004.
4. .000030 GOLD OVER .000030 NICKEL.
5. .000050 GOLD OVER .000030 NICKEL.
6. .000100 GOLD OVER .000030 NICKEL.
7. CUT-OFF TAB FOR LOOSE PIECE PARTS IS .005-.020 BOTH FRONT AND REAR.

REVISIONS				
SYM	ZONE	DESCRIPTION	DATE	APPROVAL
S		REDRAWN AND REVISED	V-488	9-17-64 M.S./ASH
T		REVISED SHT. 1 & ADD SHT. 2	V-757	12-28-64 M.S./D.H.
V		REVISED SHT. 1 & 2	Y-278	3-16-66 M.S./D.H.
W		REVISED SHT. 1	Y-320	4-6-66 M.S./D.H.
W1		REVISED SHT. 1 & 2	2784 M.S.	12-3-70 D.H.
W2		REVISED SHT. 2	4433 M.S.	4-24-75
W3		REVISED	6869 D.C.	9-8-80

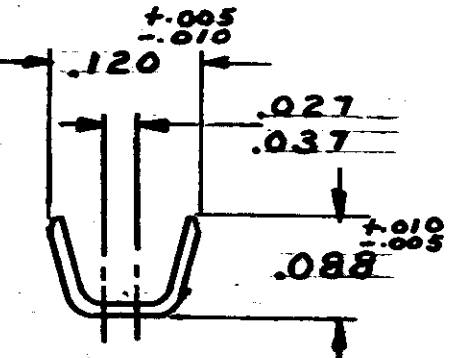


SECT. A-A

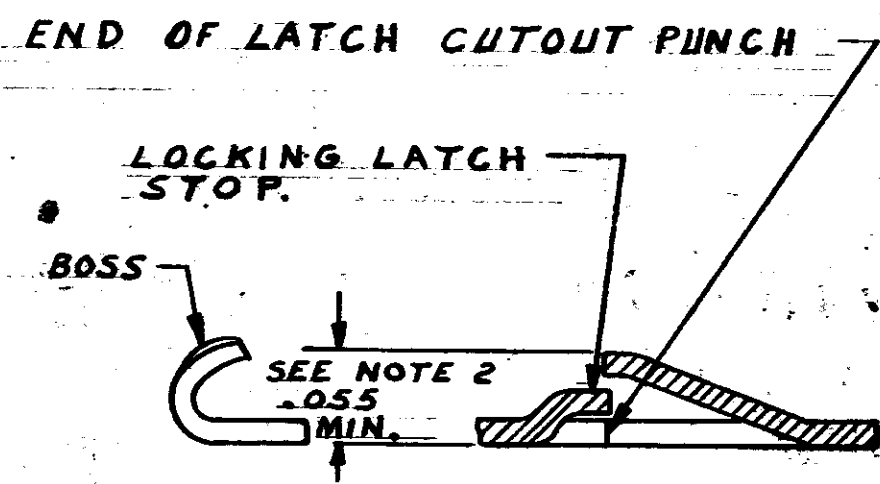
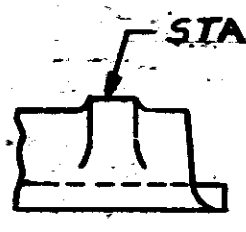
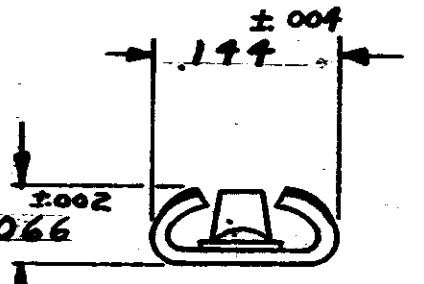
SECT. B-B



SECT. A-A (FOR 66021-2 ONLY)



SECT. B-B



AMP INFO
LOC PRINT DIST
AR 39

QTY REQD	NOMENCLATURE OR DESCRIPTION	PART OR IDENTIFYING NO.
----------	-----------------------------	-------------------------

LIST OF MATERIALS OR PARTS LIST

OTHERWISE SPECIFIED	SIGNATURE	DATE
FRACTIONS ± #	<i>M. Smith</i>	10-9-64
DECIMALS ± .010	<i>D.S. Heide</i>	11/16/64
ANGLES ± #	<i>R. Sloman</i>	10/11/64
MATERIAL	<i>R. Hill</i>	11/64
.0126 COMM. PHOS. BRONZE		
FINISH TREAT		
—//—		
GOLD OVER NICKEL (REF. NOTES 4 & 5)		

AMP TRADEMARK		AMP INCORPORATED HARRISBURG, PENNSYLVANIA	
AMP BLADE RECEPTACLE			
CODE IDENT NO	SIZE	NUMBER	
00779	B	66005	
BY	CALC	ACTUAL	SHEET 1 OF 1

AMP INCORPORATED. ALL RIGHTS RESERVED. AMP PRODUCTS COVERED BY PATENTS AND/OR PATENTS PENDING. APPROVED PER GOVT CONTRACT NO.

REVISIONS				
SYM	ZONE	DESCRIPTION	DATE	APPROVAL
W3				

66021-4	#	#	#	#	2*22 OR 2*20	2(.045-.072) DIA.	SEE NOTE 6	66026-4		
66027-3	.125	.125	.075	.060	28-24 AWG.	SPECIAL	SEE NOTE 5	66029-3		
66027-2	.125	.125	.075	.060	28-24 AWG.	SPECIAL	SEE NOTE 4	66029-2	66154-1	66158-1
66021-3	#	#	#	#	2*22 OR 2*20	2(.045-.072) DIA.	SEE NOTE 5	66026-3		
66021-2	#	#	#	#	2*22 OR 2*20	2(.045-.072) DIA.	SEE NOTE 4	66026-2	66153-1	66157-1
66009-3	.100	.090	.075	.060	28-24 AWG.	.030-.060 DIA.	SEE NOTE 5	66011-3		
66009-2	.100	.090	.075	.060	28-24 AWG.	.030-.060 DIA.	SEE NOTE 4	66011-2	66152-1	66156-1
66005-3	.120	.111	.090	.080	24-20 AWG.	.040-.080 DIA.	SEE NOTE 5	66010-3		
66005-2	.120	.111	.090	.080	24-20 AWG.	.040-.080 DIA.	SEE NOTE 4	66010-2	66151-1	66155-1
PART NO.	A $\pm .003$ $-.010$	B $\pm .010$ $-.008$	C $\pm .003$ $-.010$	D $\pm .010$ $-.008$	WIRE RANGE	INS. RANGE	FINISH	LOOSE PC. P/N.	STRIP P/N Δ	L.P. P/N Δ

A. 000015 GOLD OVER .000030
MIN. NICKEL

AMP INFO	QTY RECD	NOMENCLATURE OR DESCRIPTION	PART OR IDENTIFYING NO.	MATERIAL AND PLATING
LOC: <u>AR 39</u>				
LIST OF MATERIALS OR PARTS LIST				
OTHERWISE SPECIFIED DIMENSIONS ARE IN INCHES TOLERANCES ON FRACTIONS DECIMALS ANGLES ± ± ± MATERIAL SEE SHEET 1 SURF TREAT // GOLD OVER NICKEL REF NOTES 4 & 5 SHEET 1		SIGNATURE DATE OR <u>M. Smith</u> <u>12-29-64</u> CHK <u>J.S. Wade</u> <u>12/29/64</u> OPEN ENGR <u>R. Sloman</u> <u>12/29/64</u> OPEN APPR OTHER APPR		AMP INCORPORATED HARRISBURG, PENNSYLVANIA AMP TRADEMARK NAME AMP BLADE RECEPTACLE CODE IDENT NO <u>00779</u> SIZE <u>B</u> NUMBER <u>66005</u> WT CALC ACTUAL DIMS 20

X-ON Electronics

Largest Supplier of Electrical and Electronic Components

Click to view similar products for [Rectangular Mil Spec Connectors](#) category:

Click to view products by [TE Connectivity](#) manufacturer:

Other Similar products are found below :

[006-1169-16](#) [CSR31343-0001-00000](#) [CSR31346-0001-A0001](#) [CSR31899-0001-00000](#) [CSR31900-0001-A0001](#) [CTJ-3D-05](#) [CTS-S16/16](#)
[M55302/57A36X](#) [M55302/58-A70Y](#) [65002-062](#) [65008-D08](#) [CY4602-000](#) [732-8020-01](#) [732-8021-02 B](#) [77058-22-55PN](#) [81542-20](#)
[86.030.0053.0](#) [1241346-1](#) [RM252-020-311-2900](#) [DMC-M 08-16 SNE](#) [1589051-4](#) [BACC65CAMA](#) [BACC65CAMN](#) [BACC65CP1PN](#)
[BACI10BC1220PN](#) [18023-9](#) [HSB-D4S03DM222X](#) [2217548-1](#) [891-009-15SA2-BRT1T](#) [SIM2S100A](#) [1604996-2](#) [SMD25PN90L-4055](#)
[1925036-4](#) [220A012-25225-0](#) [22628-10-6P-791](#) [CSR31343-0001-A0001](#) [CSR31899-0001-A0001](#) [CSR31900-0001-00000](#) [33526M11-08PD](#)
[RE04-212S](#) [CTD160E01F-6148](#) [CTJ112E03B](#) [CTJ122E02D-8000](#) [CTJ-3D-12](#) [CTJ920E06N-513](#) [CTJ920E12N-513](#) [CTL-16-090](#) [CTR06-](#)
[5100SY](#) [M55302/63A20H](#) [M55302/66-30H](#)