



**Bernstein**

Bernstein AG  
Postfach 1164  
D-32437 Porta Westfalica

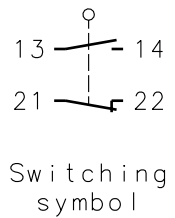
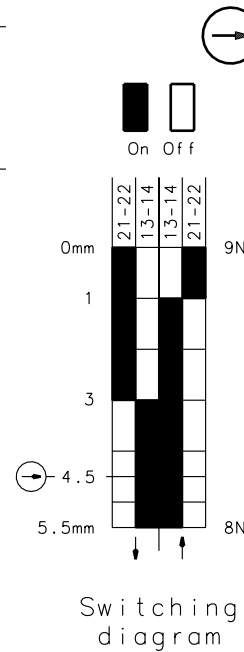
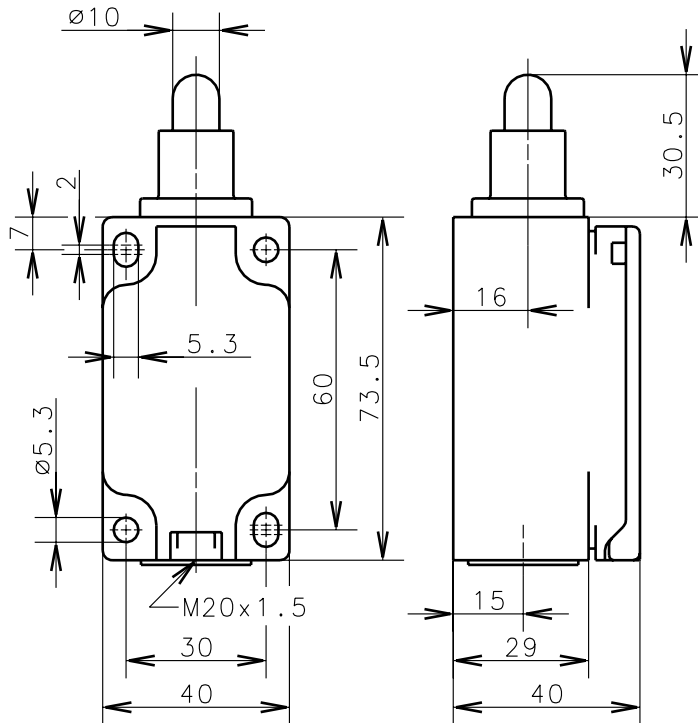
# Technical data sheet

ENK-SU1Z iw

608.1152.007



Positive opening operation according to DIN EN 60947-5-1 IEC 60947-5-1



Tolerance: Operating point ±0.25mm; actuating force ±10%

### Mechanical features

Enclosure: Thermoplast, glass fiber reinforced  
Cover: Thermoplast, glass fiber reinforced  
Actuator: Push bolt (St)

Ambient air temperature: -30°C up to +80°C  
Contact type: 1 NC-contact - 1 NO-contact (Zb)

Mechanical life: 10x10<sup>6</sup> switch operations  
Switch frequency: max.100/min  
Mounting: 4 x M5  
Connection type: 4 screw connections (M3.5)  
Conductor cross-section: single core 0.5-1.5mm<sup>2</sup>/litz wire connector sleeve 0.5-1.5 mm<sup>2</sup>  
Cable entry size: 1 x M20x1.5  
Weight: approx. 0,15kg

### Electrical features

Rated insulation voltage: U<sub>i</sub> = 500 V AC  
Conventional thermal current: I<sub>the</sub> = 10A  
Max. inrush current: according to IEC 60947-5-1, AC 15, A300  
Utilization categorie: AC 15, A300, U<sub>e</sub>/I<sub>e</sub> 240V/3A  
Standards: according to EN 60947-1; EN 60947-5-1  
Protection class (IP-Code): IP65 according to EN 60529, DIN VDE 0470 T1  
CSA: 10A 300V AC, A300 (same polarity)  
Short-circuit protection: Fuse 2A gL/gG, IEC/EN 60947-5-1, appendix K

### Approach possibilities

The push bolt actuator is mainly intended to be actuated along it's axis. Side actuation will considerably reduce switch life.

### Remarks

The moving parts should be oiled periodically.  
The rated protection class (IP-Code) is valid only at closed cover and when using an it least equivalent cabel gland.

Schutzmerk nach DIN 34 beachten  
Copyright reserved

13.02.02

## X-ON Electronics

Largest Supplier of Electrical and Electronic Components

*Click to view similar products for [Other Tools](#) category:*

*Click to view products by [Bernstein](#) manufacturer:*

Other Similar products are found below :

[CR-05FL7--150R](#) [CR-05FL7--698K](#) [899-2-KT46](#) [899-5-KT46](#) [CR-0AFL4--332K](#) [CR-12FP4--260R](#) [CRCW04021100FRT7](#)  
[CRCW04021961FRT7](#) [5800-0090](#) [CRCW04024021FRT7](#) [CRCW040254R9FRT7](#) [CRCW0603102JRT5](#) [59065-5](#) [00-8273-RDPP](#) [00-8729-](#)  
[WHPP](#) [593033](#) [593058](#) [593072](#) [593564100](#) [593575](#) [593591](#) [593593](#) [011349-000](#) [LTLA506SBLAMNBL](#) [CRCW08052740FRT1](#) [LUC-](#)  
[012S070DSM](#) [LUC-018S070DSP](#) [599-2021-3-NME](#) [599-JJ-2021-03](#) [00-5080-YWPP](#) [5E4750/01-20R0-T/R](#) [LW1A-L1-GL](#) [LW1A-P1-GD](#)  
[LW1L-A1C10V-GL](#) [LW1L-M1C70-A](#) [0202-0173](#) [00-9089-RDPP](#) [00-9300-RDPP](#) [CRCW2010331JR02](#) [01-1003W-8/32-10](#) [601-GP-08-](#)  
[KT39](#) [601-JJ-06](#) [601-SPB](#) [601YSY](#) [602-JJ-03](#) [602SPB](#) [602Z](#) [603-JJ-07-FP](#) [603-JJY-04](#) [604J](#)