

Drq. No.: 1059600495

Title: SPECIFICATION

Used On: 59600-495

DESCRIPTION: - Single Pole Form A Proximity Device.
 CONSTRUCTION: - Encapsulated in a Moulded Plastic Body.

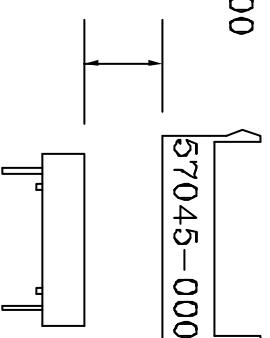
CUSTOMER: -
 CUSTOMER DRG. No.: -

ELECTRICAL

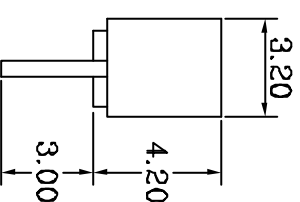
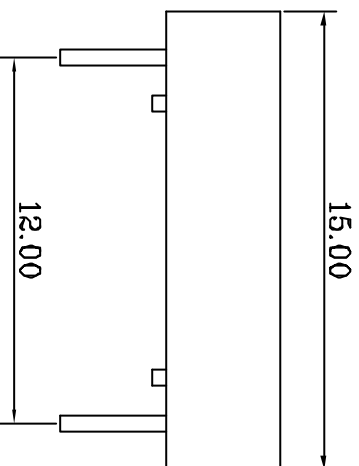
Maximum Switched Current 0.5A
 Maximum Switched Voltage 200Vdc
 Maximum Switched Power 10W
 Maximum Initial Contact Resistance
 (inc. leadouts) 100m Ω
 Maximum Carry Current 0.8A
 Minimum Insulation Resistance 10¹⁰ Ω
 Min. Voltage Holdoff 250Vdc

PHYSICAL

Body Material: - Celanex - Black
 Encapsulant: - Urethane - Black
 Leadouts: - ø0.47mm, Tinned
 Operation
 Actuator: - 57045-000
 Operate Distance: - > 2mm
 Release Distance: - < 14mm



FOR CONDITIONS OF TESTING REFER TO DRG. No. 30.003
 GENERAL TOLERANCES ±0.13mm UNLESS STATED OTHERWISE



MOD. NO.	DATE	ISSUE NO.	MOD. NO.	DATE	ISSUE NO.

© HAMILIN ELECTRONICS (EUROPE) LTD.
 2002

THIS DESIGN AND PRINT IS COPYRIGHT AND IS THE PROPERTY OF HEEL. IT MUST NOT BE COPIED OR PERMITTED TO BE COPIED, NOR MUST ITS CONTENTS BE DIVULGED TO ANY THIRD PARTY WITHOUT PRIOR WRITTEN PERMISSION FROM THE COMPANY.

Drawn *PA* Issued
 Doc. Ret. Code: D

Sheet 1 of 1 Sheet(s)
 Dimensions: mm Scale: 4 : 1
 Date: 09.12.02 File: A
 Drq. No.: 1059600495

X-ON Electronics

Largest Supplier of Electrical and Electronic Components

Click to view similar products for [Magnetic/Reed Switches](#) category:

Click to view products by [Hamlin](#) manufacturer:

Other Similar products are found below :

[59200-020](#) [MDSR-4-12-23](#) [MMRB20006](#) [PSW-21](#) [AMS-17-B](#) [AMS-20MG](#) [AMS-37-G_W/Brk](#) [AMS-38S-I](#) [AMS-38SW](#) [AMS-39B-B](#)
[AMS-39B-W](#) [HRB10030](#) [2116900170](#) [AMS-10S-B](#) [AMS-25B-B](#) [AMS-37BROWN](#) [AMS-38MG](#) [AMS-38SB](#) [AMS-9-B](#) [AMS-T10C\(B\)](#)
[4350238](#) [505-171W WHITE](#) [505-211B](#) [505-391G](#) [505-5114W WHITE](#) [505-70B](#) [507-382B](#) [BMC-33B](#) [HM00-01800](#) [4350186](#) [505-101-GC](#)
[505-101-GS](#) [505-101WC](#) [505-101-WS](#) [505-172W](#) [505-201W](#) [505-392W](#) [505-90G](#) [505-90I](#) [507-381BB](#) [RSW-21A-I](#) [ODC-56B](#) [FF6-21-DC-](#)
[03-SS](#) [FF6-11-AC-06](#) [FF6-21-AC-06](#) [DRR-129\(42-48\)](#) [ODC-56A](#) [AMS-10MGW](#) [AMS-37B GRAY](#) [649.0642.305](#)