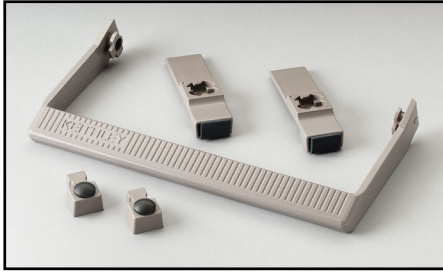


# Bench Kits, Rack Mount Kits

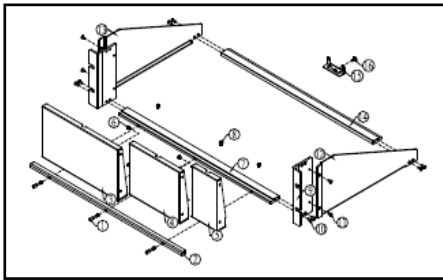
**Model 386-7598-xx Cosmetic Filler Panel:** Tektronix Filler panel to RMU 2U rack kit when a single Series 2200 power supply is rack mounted.

**For use with: All Series 2200 power supplies**



**Model 2000-Benchkit:** Benchtop Restore Kit. Rubber feet and carrying handles are removed during rack mounting. These items can be used with any of the following models to convert it back to a benchtop instrument.

**For use with: Series 2000, 2182A, Series 2300, Series 2400, Series 2500, Series 2600B, 2700, 2701, 6220, 6221, 6430, 6482, 6485, 6487, 6514, 6517A, 6517B, 7001**



**Model 2260B-RMK-EIA:** Rack mount kit (EIA racks).

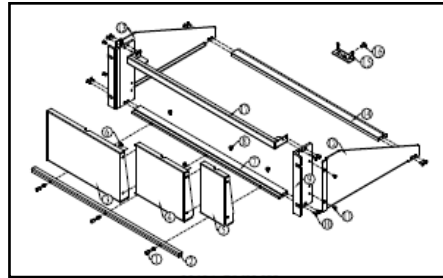
**For use with: Series 2260B**

## SELECTOR GUIDE: RACK MOUNT KITS

Instrument			Single Fixed	Single Slide	Dual Fixed	Type of Mount
Series 2000	2700	6487	4288-1		4288-2	Side
2182A	2701	6514				
Series 2300	6220	6517B				
Series 2500	6221	6485			4299-7	Shelf
Series 2100	Series 2400	6430	4299-3		4299-4	Side
			4299-7		4299-7	Shelf
	Series 2260B				2260B-RMK-EIA 2260B-RMK-JIS	Shelf
	2290-5		2290-5-RMK-1		2290-5-RMK-2	Side
					4299-7	Shelf
	2290-10		2290-10-RMK-1		2290-10-RMK-2	Side
					4299-7	Shelf
	2450		4299-8		4299-9 4299-10 <sup>1</sup> 4299-11 <sup>2</sup>	Side
	Series 2600B		4299-1		4299-2	Side
2651A	2657A	708B	4299-6			Side
2750	System 46	System 46T	4288-7			Rear Bracket
	707B		Included on 707B chassis	7079		Side
	Series 3700A		4288-10			Rear Bracket
	4200-SCS/C or /F		4200-RM			Rail
	7002		7002-RMK-1	7002-RMK-2		Bracket w/Handles

1. Model 4299-10 mounts one Model 2450 and one Series 26XXB.

2. Model 4299-11 mounts one Model 2450 and one Series 2000, 2400, and all other 2U, half rack instruments except the Series 2200 and Series 2290 instruments.



**Model 2260B-RMK-JIS:** Rack mount kit (JIS racks).

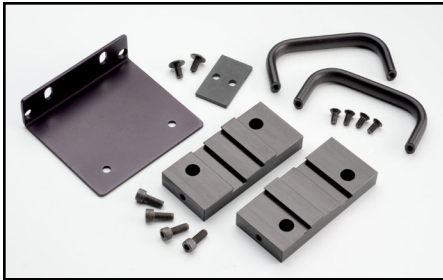
**For use with: Series 2260B**



**Model 2290-5-RMK-1:** Enables rack mounting of a single Model 2290-5.

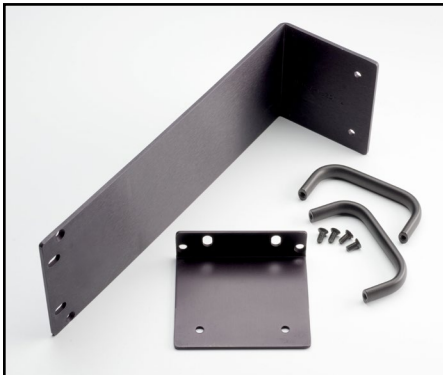
**For use with: 2290-5**

# Rack Mount Kits



**Model 2290-5-RMK-2:** Enables rack mounting of two Model 2290-5s side-by-side.

**For use with:** 2290-5



**Model 2290-10-RMK-1:** Enables rack mounting of a single Model 2290-10.

**For use with:** 2290-10



**Model 2290-10-RMK-2:** Enables rack mounting of two Model 2290-10's side-by-side.

**For use with:** 2290-10

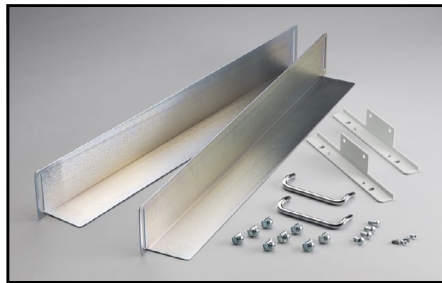
**Model 2450-Benchkit:** Includes all of the hardware required to set up the Model 2450-RACK or Model 2450-NFP-RACK for use on a bench top. Includes the front and rear bumpers, handle, and handle mounting components.

**For use with:** 2450-RACK, 2450-NFP-RACK



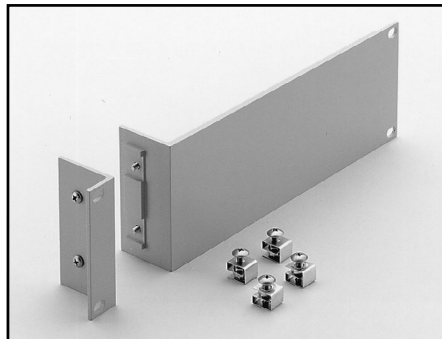
**Model 4200-KEY-RM:** Rack mount kit for cabinet mounting of standard keyboard and pointing devices.

**For use with:** 4200-SCS



**Model 4200-RM:** Fixed rack mount kit for cabinet mounting of the 4200-SCS.

**For use with:** 4200-SCS



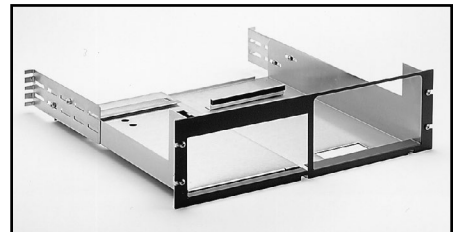
**Model 4288-1 Fixed Rack Mount Kit:** Single-unit rack mount kit. Height: 88mm (3½ in).

**For use with:** See Selector Guide.



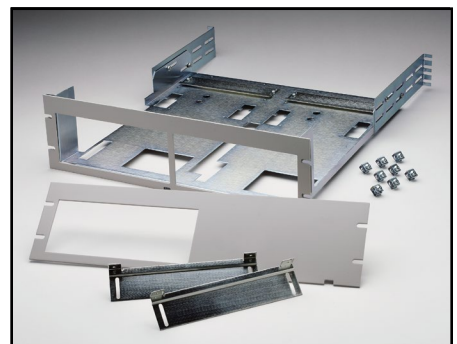
**Model 4288-2 Fixed Rack Mount Kit:** Height: 88mm (3½ in).

**For use with:** See Selector Guide.



**Model 4288-4 Fixed Rack Mount Kit:** Enables rack mounting of one Model 230 next to one 428-PROG, 776, Series 2000, 2182A, Series 2300, Series 2400, Series 2600B, 2700, 2701, 6220, 6221, 6514, 6485, 6487, 6517A, 6517B, or 7001.

**For use with:** See Selector Guide.



**Model 4288-5 Fixed Rack Mount Kit:** The single- and dual-instrument front panels included enable rack mounting of either one or two 3½-inch instruments. Height: 132mm (5¼ in). Depth: 457mm(18 in).

**For use with:** See Selector Guide.

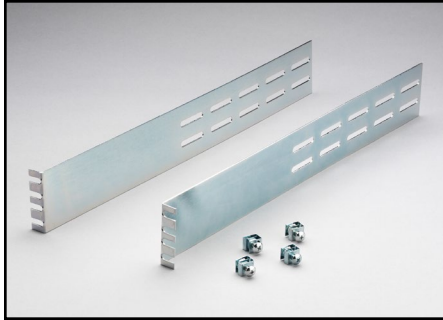
1.888.KEITHLEY (U.S. only)

[www.keithley.com](http://www.keithley.com)

A Greater Measure of Confidence

**KEITHLEY**  
A Tektronix Company

# Rack Mount Kits



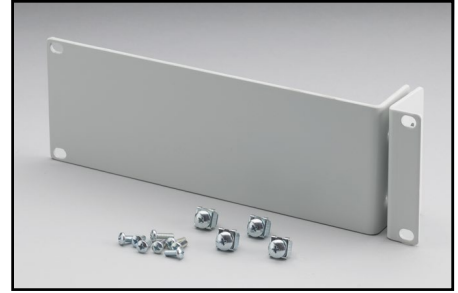
**Model 4288-7 Rear Support Mount Kit:** For rack mount applications where more than one or two card modules are installed to provide added support for the rear of the mainframe. Note that front rack mounting hardware is supplied with the Model 2750 mainframe. 88mm (3.5 in) height.

**For use with: 2750, System 46, System 46T**



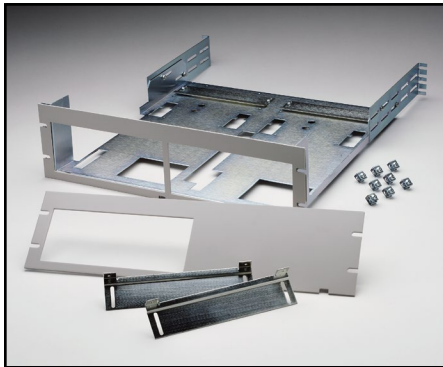
**Model 4288-10 Rear Support Mount Kit:** For rack mount applications where more than one or two card modules are installed to provide added support for the rear of the mainframe. Note that front rack mounting hardware is supplied with Series 3700A mainframes. 88mm (3.5 in) height.

**For use with: Series 3700A**



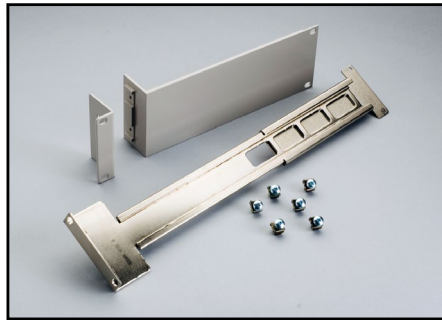
**Model 4299-3 Universal Single Unit Rack Mount Kit:** Includes all required hardware to rack mount a single Keithley or Agilent half rack instrument using front panel only mounting into a standard 19 inch equipment rack. Not compatible with Series 2600B. 88mm (3.5 in) height.

**For use with: Half rack instruments (excluding Series 2600B)**



**Model 4288-9 Fixed Rack Mount Kit:** Shelf style rack mount kit with single- and dual-instrument front plates provided. Also included are extended rear support brackets and hardware for installation.

**For use with: Series 2200 Power Supplies**



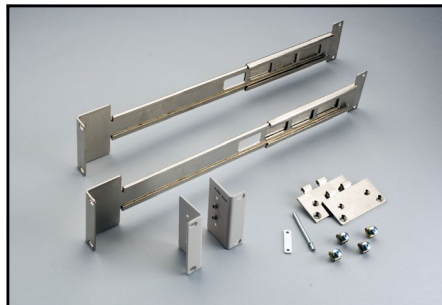
**Model 4299-1:** Heavy duty, single rack mount kit with front and rear support. Height: 88mm (3.5 in).

**For use with: Series 2600B**



**Model 4299-4 Universal Dual Unit Rack Mount Kit:** Includes all required hardware to rack mount two Keithley and/or Agilent half-rack instruments together using front panel only mounting into a standard 19-inch equipment rack. Not compatible with Series 2600B. 88mm (3.5 in) height.

**For use with: Half-rack instruments (excluding Series 2600B)**



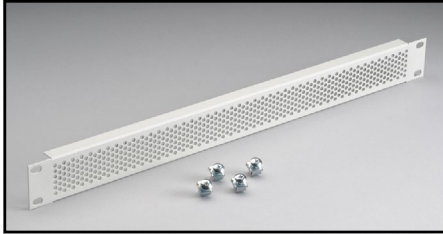
**Model 4299-2:** Heavy duty, dual rack mount kit with front and rear support. Height: 88mm (3.5 in).

**For use with: Series 2600B**

1.888.KEITHLEY (U.S. only)

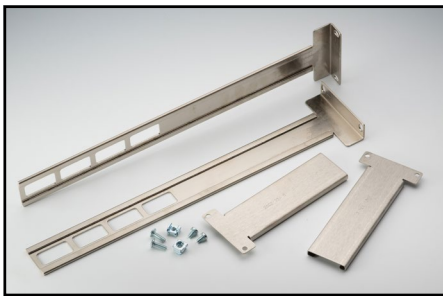
[www.keithley.com](http://www.keithley.com)

# Rack Mount Kits



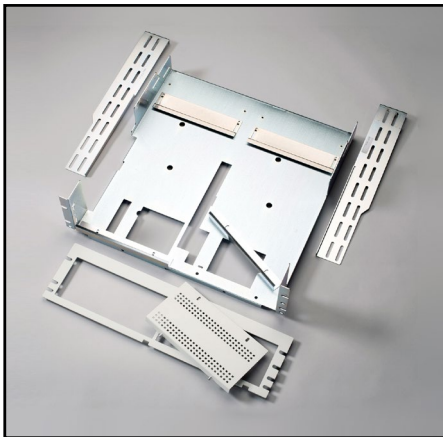
**Model 4299-5:** 1U vent panel.

**For use with:** Series 2600B



**Model 4299-6 Single Fixed Rack Kit:** Includes all required hardware to rack-mount a Keithley full-rack instrument in a standard 19-inch equipment rack.

**For use with:** 2651A, 2657A



**Model 4299-7 Universal Fixed Rack Mount Kit:** Enables rack-mounting of Series 2200 power supplies with other instruments.

**For use with:** Series 2000, Series 2100, 2182A, Series 2200, Series 2300, Series 2400, Series 2500, Series 2600B, 2700, 2701, 6220, 6221, 6430, 6482, 6485, 6487, 6514, 6517A, 6517B

**Model 4299-8 Single Fixed Rack-Mount Kit:** Includes all of the required hardware to install a single 2U Graphical Display instrument in a standard 19-inch equipment rack.

**For use with:** 2450

**Model 4299-9 Dual Fixed Rack-Mount Kit:** Includes all of the required hardware to install two adjacent 2U Graphical Display instruments in a standard 19-inch equipment rack.

**For use with:** 2450

**Model 4299-10 Dual Fixed Rack-Mount Kit:** Includes all of the required hardware to install a 2U Graphical Display instrument and an adjacent 2U Series 26xx instrument in a standard 19-inch equipment rack.

**For use with:** 2450, Series 26xx

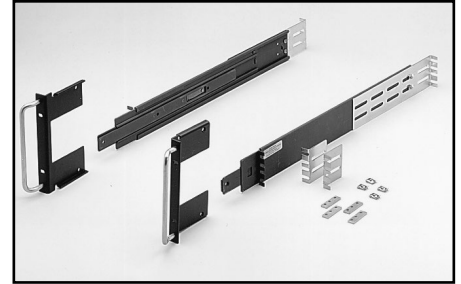
**Model 4299-11 Dual Fixed Rack-Mount Kit:** Includes all of the required hardware to install a 2U Graphical Display instrument and an adjacent 2U instrument in a standard 19-inch equipment rack. The adjacent instrument can be a Keithley Instruments Series 24xx or Series 2000 DMM, or a standard Agilent 2U instrument.

**For use with:** 2450, Series 24xx, Series 2000



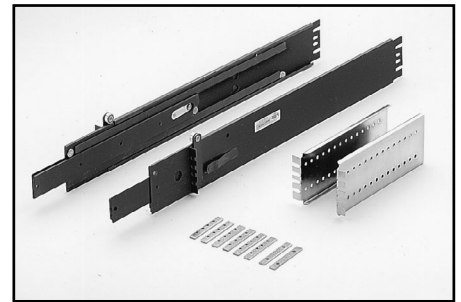
**Model 7002-RMK-1 Fixed Rack Mount Kit:** Two 7 in. flanged brackets and hardware for mounting the Model 7002 in a standard 48.3cm (19 in) equipment cabinet. Can be used with Models 8000, 8000-10, 8000-14, or 8000-17.

**For use with:** 7002



**Model 7002-RMK-2 Slide Rack Mount Kit:** Two sets of flanged brackets, slides, and hardware to mount Model 7002 in standard 48.3cm (19 in) equipment cabinet. Can be used with Model 8000.

**For use with:** 7002



**Model 7079 Slide Rack Mount Kit:** Two sets of flanged brackets, slides, and hardware to mount Model 707A in standard 48.3cm (19 in) equipment cabinet. Can be used with Model 8000.

**For use with:** 707B

**RMU 2U: Basic Power Supply Rack Kit:** Rack mount kit for mounting either one or two of the Series 2200 power supplies

**All Series 2200 power supplies**

1.888.KEITHLEY (U.S. only)

[www.keithley.com](http://www.keithley.com)

A Greater Measure of Confidence

**KEITHLEY**  
A Tektronix Company

## X-ON Electronics

Largest Supplier of Electrical and Electronic Components

*Click to view similar products for [Mounting Hardware](#) category:*

*Click to view products by [Keithley](#) manufacturer:*

Other Similar products are found below :

[60687-01 LOCK WASHER Black](#) [627](#) [M3783-7001](#) [7717-139N](#) [7717-8DAP](#) [8351-832-A-24](#) [FPK-02-R10](#) [1-18023-0](#) [HD7-1](#) [R501-000-021](#)  
[1404-0016-78](#) [154-006](#) [155-012](#) [1566](#) [1566](#) [BR16A](#) [195-003](#) [195-004](#) [195-012](#) [197-092](#) [20800000003](#) [21899-3](#) [1671](#) [194-001](#) [195-010](#)  
[AMCPJ51](#) [2193](#) [2518](#) [448192-2](#) [4658](#) [4665](#) [4668](#) [4731](#) [BVX-BCK](#) [561-T001](#) [LDIN30](#) [4637](#) [4640](#) [4674](#) [1-18023-2](#) [63291-01](#) [SMALL](#)  
[PATTERN HEX NUT](#) [70001938](#) [70001953](#) [613](#) [616](#) [20607-1](#) [1585888-1](#) [2547](#) [90100002-1SW](#) [81517301](#)