

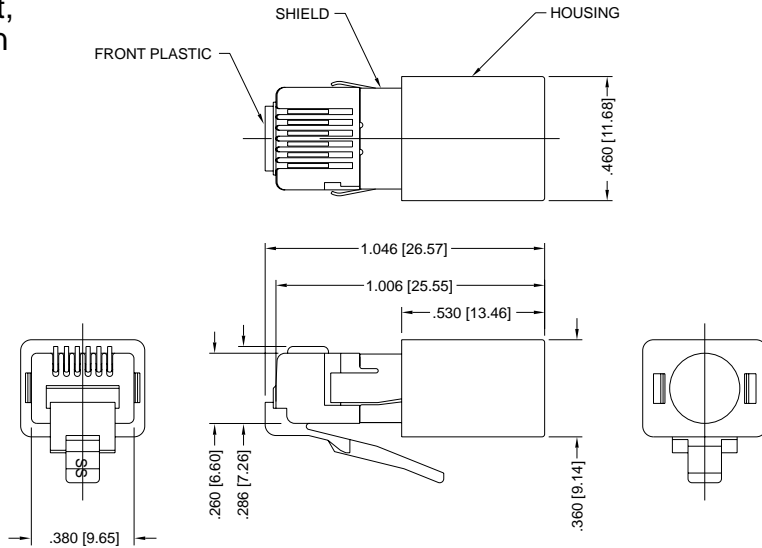
Modular Plugs

• Shielded

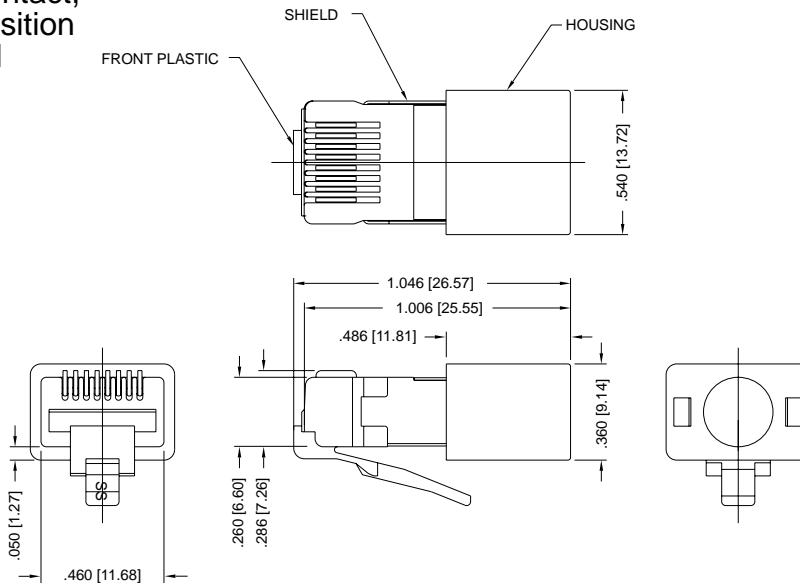
36 Series

Variations

Six-Contact, Six-Position Shielded

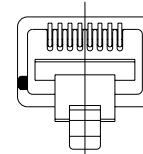


Eight-Contact, Eight-Position Shielded

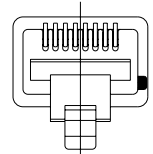


Keying Options

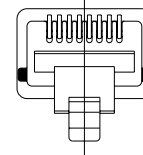
K1-Key



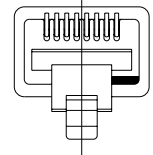
K2-Key



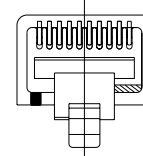
K3-Key



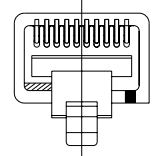
K4-Key



RMK4-Key



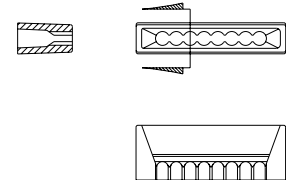
RMK4R-Key



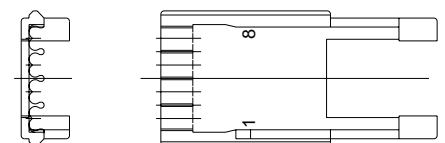
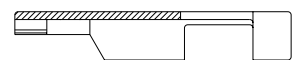
- Fill
- ▨ Cutout

Wire Management Systems

Management Bar



Load Bar



Quick Reference Chart

Description				Options								
Series	Contacts Inserted	Contact Positions	Contact Positions	Keying Options						External Housing with Strain Relief	Wire Managemt. Systems	
				K1	K2	K3	K4	RMK4	RMK4R		Mgmt. Bar	Load Bar
RJ-11*	36	06	06									●
RJ-45*	36	08	08	●	●	●	●			●	●	●
RJ-45*	36	10	10	●	●	●	●	●	●	●		●

*Typical applications.

Note: Configurations shown are the most common for typical applications.

For availability of other configurations not listed, consult Stewart.

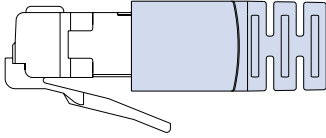
All dimensions are in inches with metric values in brackets.

See next page for more variations.

Variations

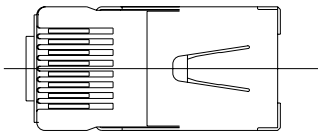
See previous page for other variations.

External Grommet Housing with Strain Relief

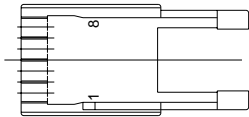


Shielded Plug Components

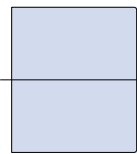
Front Plastic with Shield



Wire Management Load Bar



Housing

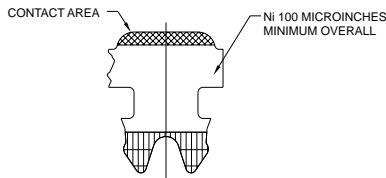


Ferrule

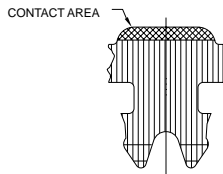


Plating Styles

Double Selective Plate (DS)

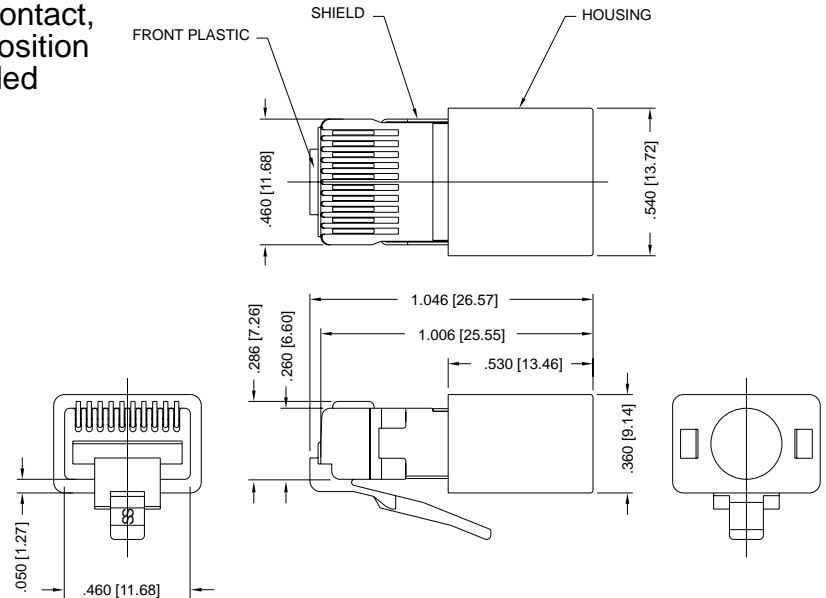


Selective Plate (SP)



INDICATES PLATING AREA ON TOP SURFACE. (AVAILABLE IN 50 OR 30 MICROINCHES Au WITH 3 MICROINCHES FLASH UNDERPLATING.)
 INDICATES PLATING AREA ON BOTTOM SURFACE. (AVAILABLE IN 3 MICROINCHES Au ONLY, BOTH SIDES.)

Ten-Contact, Ten-Position Shielded



Quick Reference Chart

Description				Options								
Series	Contacts Inserted	Contact Positions	Keying Options						External Housing with Strain Relief	Wire Management Systems		
			K1	K2	K3	K4	RMK4	RMK4R		Mgmt. Bar	Load Bar	
RJ-11*	36	06	06									•
RJ-45*	36	08	08	•	•	•	•			•	•	•
	36	10	10	•	•	•	•	•	•	•		•

*Typical applications.

Note: Configurations shown are the most common for typical applications. For availability of other configurations not listed, consult Stewart.

How to Order

EXAMPLE: 940 - 30 - SP - 36 08 08 - K1 - 031 - X

Contact styles

- 937 for stranded conductor
- 940 for solid conductor

Plating options (microinches Au)

- Leave blank for standard 50
- 30 - Optional

Plating styles

- SP - Selective plate
- DS - Double selective plate

Series number

Other options (consult Stewart)

Conductor diameter

- Leave blank for .037" [.940]
- 031 for .031" [.790]

Keying options

- K1, K2, K3, K4, RMK4, RMK4R

Number of contact positions

- 06, 08, or 10

Number of contacts inserted

- 06, 08, or 10

Note: For information on tooling, see pages 92-94.

All dimensions are in inches with metric values in brackets.

X-ON Electronics

Largest Supplier of Electrical and Electronic Components

Click to view similar products for [Modular Connectors / Ethernet Connectors](#) category:

Click to view products by [Stewart Connector / Bel](#) manufacturer:

Other Similar products are found below :

[RJE231881317T](#) [MP1010RX-1000](#) [MP44RX-1000](#) [GAX-3-66](#) [GAX-8-62](#) [93606-0253](#) [GD-A-44](#) [GDCX-PA-66-50](#) [GDCX-PN-64](#) [GDCX-PN-66](#) [GDCX-PN-66-50](#) [GDLX-A-66](#) [GDLX-A-88](#) [GDLX-N-66](#) [GDLX-S-88K](#) [GDTX-S-88-50](#) [GDX-PA-1010](#) [GLX-N-1010M-BLK](#) [GLX-N-44M](#) [GLX-S-88M-BLK](#) [GMX-N-1010](#) [GMX-S-1010](#) [GMX-S-66](#) [GMX-SMT2-N-1010](#) [GMX-SMT2-N-64-50](#) [GMX-SMT2-S6-88](#) [GMX-SMT4-N-88](#) [GPX-2-64](#) [GRT1-BT1-5](#) [GSGX-N-2-88](#) [GSX-NS2-88-3.05](#) [GSX-NS2-88-3.05-50](#) [GSX-NS-88-3.05-30](#) [GSX-NS-88-3.05-50](#) [GSX-NS-88-3.68](#) [1-1775629-2](#) [GWLX-S-88-GR](#) [GWLX-S9-88-YG](#) [1300500326](#) [1300500227](#) [1300530003](#) [1300570002](#) [1324640-4](#) [RJ11FTVC2G](#) [RJ11FTVC2N](#) [RJFTVX2SA1G](#) [132764-001](#) [1400000](#) [1413176](#) [1413235](#)