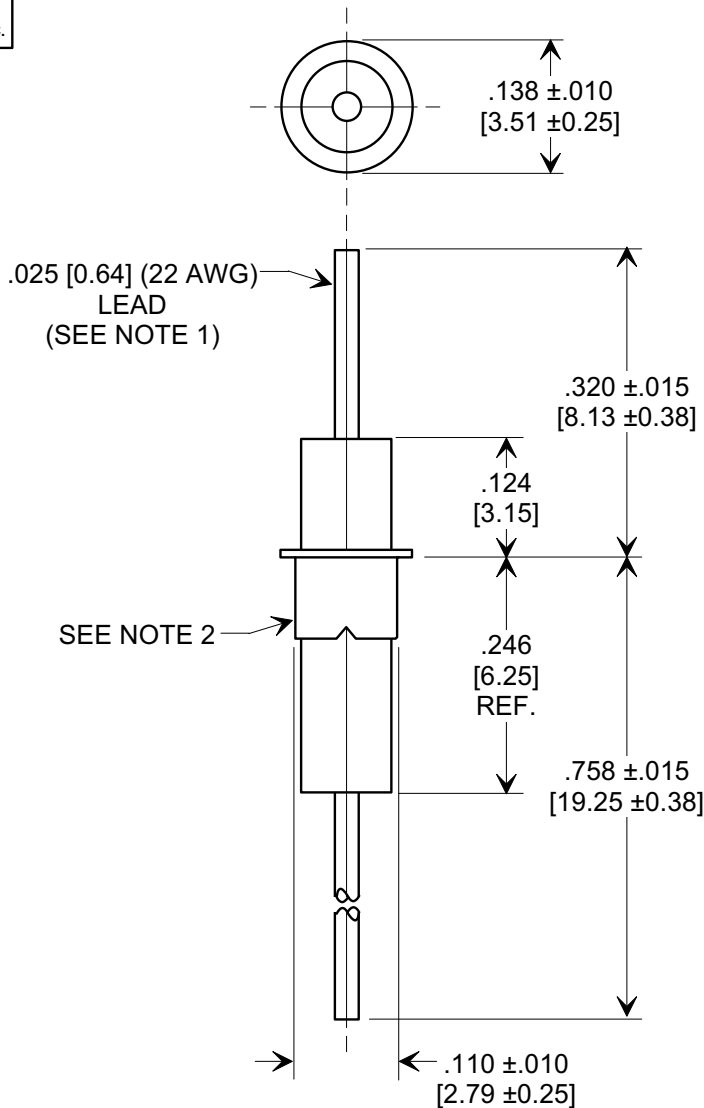
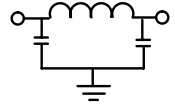
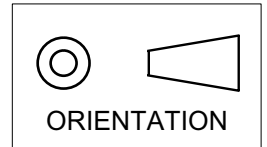


This drawing is the property of Tusonix, Inc., and may not be used, reproduced, published or disclosed to others without expressed authorization by Tusonix Inc.

Electrical Testing
per Tusonix standard
test plans and Mil-Std-202
Test Methods.

MARKETING SALES DRAWING
DIMENSIONS IN INCHES - DO NOT SCALE THIS DRAWING
DIMENSIONS IN METRIC - []



NOTES:

1. LEAD FINISH: STANDARD PART #: GOLD PLATED.
2. EYELET FINISH: STANDARD PART #: 60/40 SOLDER PLATED.

| MIN. CAP. pF | WORKING VOLTAGE (WVDC) | | CURRENT Idc. | I.R. MIN. @ 100 (VDC.) | DWV (VDC) | MINIMUM NO LOAD INSERTION LOSS (dB) AT 25°C PER MIL-STD-220 | | | |
|--------------|------------------------|-------|--------------|------------------------|-----------|-------------------------------------------------------------|---------|-------|--------|
| | 85°C | 125°C | | | | 10 MHz | 100 MHz | 1 GHz | 10 GHz |
| 1500 | 250 | 125 | 10A | 10 G Ω | 500 | 6 | 45 | 60 | 60 |

| | | | | | | | | | |
|--------------|-----------------|-----------------------|------------------------------|----------------|---|----------------------------------------------|-----------------|-------------------------|--|
| X-2015 Rev-0 | REVISION RECORD | Original Release C.O. | WAS SK 8188-667. SM 02-07-06 | 20060202-12-03 | 0 | --TOLERANCES-- Unless Otherwise Specified | | Title | |
| | | | | | | DECIMAL ± .031 [0.79] | | EYELET STYLE EMI FILTER | |
| | | | | | | ANGLES ± | | | |
| | | | | | | TUSONIX TUCSON, ARIZONA | | Approved T.C. 01-12-06 | |
| | | | | | | A | 4100-085 | | |

X-ON Electronics

Largest Supplier of Electrical and Electronic Components

Click to view similar products for [cts manufacturer](#):

Other Similar products are found below :

[744C083333JP](#) [296UD504B1N](#) [262XR102B](#) [744C083102JP](#) [CB3LV-3C-32M7680](#) [744C083222JP](#) [743C083103JP](#) [770101223](#)
[026TB32R253B1A1](#) [CB3-3C-50M0000](#) [ATS040SM-1](#) [APF30-30-13CB/A01](#) [MXO45HST-3C-16M0000](#) [ATS061C](#) [743C083104JP](#)
[744C083472JP](#) [77083103P](#) [218-10LPSTRF](#) [O7050147456MFDA4SC](#) [402WF20012IMR](#) [KFF6516A](#) [194-8MST](#) [742C083330JPTR](#) [750-](#)
[101-R120](#) [TX0506-1B](#) [766143221GP](#) [77061333P](#) [403C35D12M00000](#) [CTS-1621](#) [284TBCF502A26A1](#) [766163560GP](#) [CB3-3I-20M0000](#)
[4400-032](#) [ATS12ASM-1](#) [201XR104B](#) [770103101P](#) [CA25C5003HLT](#) [209-2MSF](#) [6740-2015](#) [CB3-3C-1M5440](#) [T8031-5V](#) [767163104D](#)
[PB1-36ND](#) [ATS049BSM-1E](#) [4400-095LF](#) [209-6LPST](#) [MP100B](#) [767141102GP](#) [766145191APTR7](#) [CB3LV-3C-25.0000-T](#)