

QA4/PBA4

Microswitch Push Button

Momentary

QA4/PBA4

mm) Ø 6.1

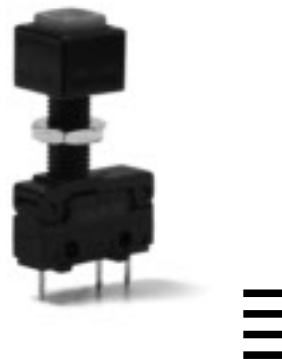
- for use with V4N/V4NC series
- long overtravel up to 5 mm
- simple clip-on attachment
- round or square bezels
- push button options

ing 250 VAC, 5 A

mm) 20 × 6.45 × 38.3

- stainless steel plunger
- polyamide (PA 6.6) plunger

als UL, CSA



Preferred Range

| Basic switch | Button | Bezel | Sealing kit | Actuator kit |
|--------------|--------|-------|-------------|--------------|
| V4NCT7 | PBRR | BZR | PBSLK | QA4 |

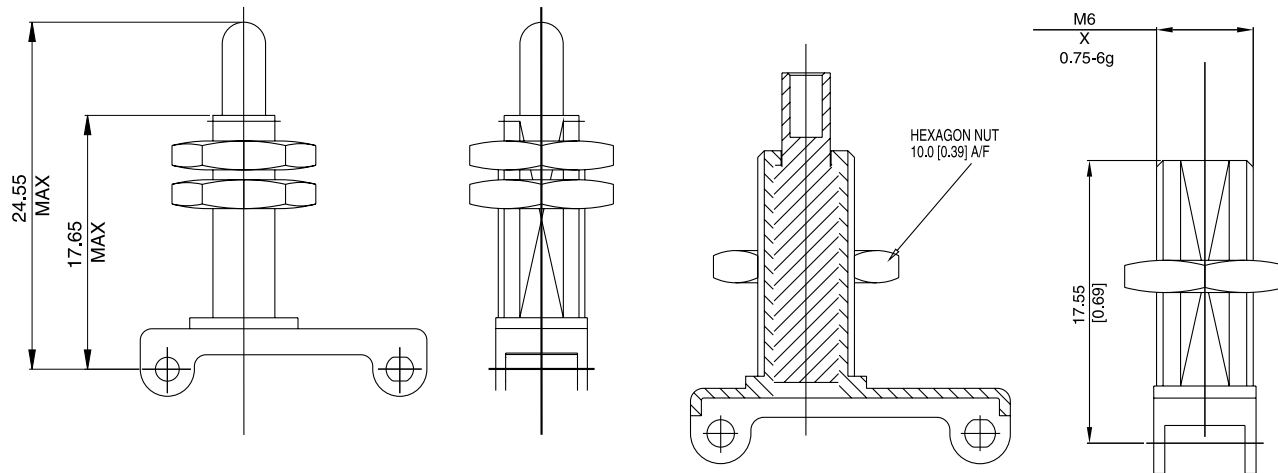
QA4/PBA4

Specifications

| | |
|----------------------|---|
| Clip-on frame | Glass fibre reinforced polyamide (PA 6.6) |
| Bezel | ABS polymer - black (PBA4 only) |
| Cowl | Synthetic rubber (PBA4 only) |
| "O"-Ring | Nitrile (PBA4 only) |
| Locknut | Brass nickel plate |
| Button/Plunger | ABS polymer (PBA4) Stainless steel (QA4) |
| Basic switches | V4NC (see pages 52 to 55) |
| Temperature range °C | -10°C to +85°C |
| Mechanical Life | 5 × 10 ⁶ cycles minimum (Mechanism 2 × 10 ⁶ cycles minimum) (Impact free actuation) |
| Mounting mm (in) | Single hole ∅ 6.4 (0.25) suitable for panels up to 8.0 (0.3) thick |
| Torque max. Nm | 0.4 to be applied to locknut |

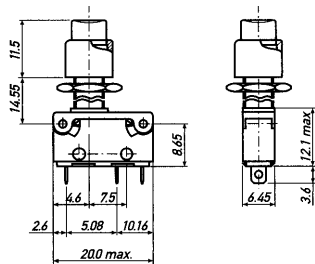
ons QA4

PBA4



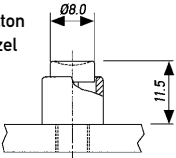
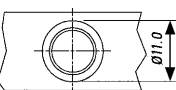
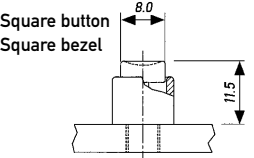
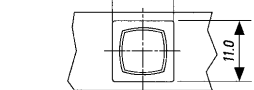
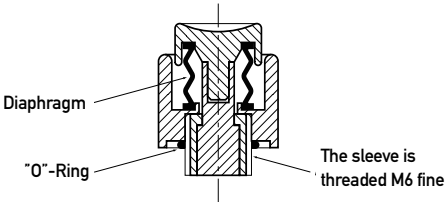
Configuration

V4NC... See pages 52 to 55
 V4N... See page 56 to 59



PBA4

Type coding key for standard products

| | | | | | |
|---------------|---|--|-----|-----|-----|
| kit PB | without insert switch, button or bezel PB-clip-on assembly round or square bezels | Example: PBA4 | PBR | RED | V4N |
| A4 | Actuator kit only | | | | |
| AS4 | Sealed actuator kit only | | | | |
| ies | can be ordered separately using bracketed references | | | | |
| (PB)R | Round Button (complete with bezel) | | | | |
| (PB)S | Square Button (complete with bezel) | | | | |
| (B)ZR | Round Bezel | | | | |
| (B)ZS | Square Bezel | | | | |
| (PB)SLK | Sealing Kit (complete with button & bezel) | | | | |
| Round button |  | | | | |
| Round bezel |  | | | | |
| Square button |  | | | | |
| Square bezel |  | | | | |
| PBSLK | Sealing kit (O-ring and diaphragm) Bezel and button can be ordered separately |  | | | |
| ors | RED (R when ordered complete with Insert switch) | | | | |
| YELLOW | (Y when ordered complete with Insert switch) | | | | |
| GREEN | (G when ordered complete with Insert switch) | | | | |
| BLUE | (BU when ordered complete with Insert switch) | | | | |
| BLACK | (B when ordered complete with Insert switch) | | | | |
| WHITE | (W when ordered complete with Insert switch) | | | | |
| ple | V4NT7PBSR is a V4NT7 (basic switch, p. 59) | | | | |
| nce | with PBS (square button complete with bezel) and a RED button | | | | |
| res | / <input type="checkbox"/> <input type="checkbox"/> <input type="checkbox"/> <input type="checkbox"/> Saia-Burgess specialise in customer specific solutions. Additional product variants are available or can be provided. If your requirements cannot be satisfied from the options listed, please contact www.saia-burgess.com or your local SB outlet. | | | | |

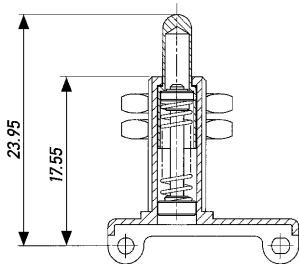


Type coding key for standard products

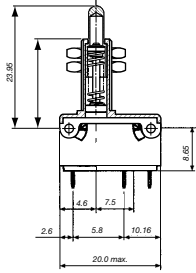
kit QA4

without insert switch

Example: QA4 QV4NCT7



switch Q followed by switch reference
 V4NC... See pages 52 to 55
 V4N... See pages 56 to 59
 Example reference: QV4NCT7



res /

Saia-Burgess specialise in customer specific solutions.
 Additional product variants are available or can be provided.
 If your requirements cannot be satisfied from the options listed,
 please contact www.saia-burgess.com or your local SB outlet.

X-ON Electronics

Largest Supplier of Electrical and Electronic Components

Click to view similar products for [Limit Switches](#) category:

Click to view products by [Saia-Burgess](#) manufacturer:

Other Similar products are found below :

[6LS2-4PG](#) [5ML1-E1](#) [5ML31](#) [LZG1](#) [LZL1-6C](#) [622EN114-R](#) [622EN18-6](#) [622EN224-6B](#) [622EN230](#) [622EN237-R](#) [622EN69-3](#) [622EN85-RB](#)
[MA-10019](#) [6PA109](#) [7LS51](#) [83547001](#) [83725002](#) [83830001](#) [83840001](#) [83840701](#) [83841001](#) [83870104](#) [83881140](#) [8AS42](#) [8LS10](#) [8LS125-](#)
[4PG](#) [8LS152-4PGN20](#) [914CE16-3A](#) [914CE3-3L1](#) [915PA10](#) [91MCE16-P2O](#) [924CE16-Y3](#) [924CE1-S6](#) [924CE1-T25A](#) [924CE1-T3](#) [924CE1-](#)
[T9A](#) [924CE2-T9](#) [924CE31-Y20-X5](#) [924CE31-Y3L1](#) [GL-10054](#) [GL-85710](#) [GL-85714](#) [GLAB26J2B](#) [GLDB03C-6](#) [GLZ324](#) [PS21R-](#)
[NT11N7-YK0](#) [D4A-1106N](#) [D4A1201N](#) [D4A-3E02N](#) [D4A-4510N](#)