

YY Control Cables

300 / 500 V

Description

Approval Certificates

VDE Reg N° 7691

Application

In dry and moist rooms for light mechanical stresses. Outdoors only when protected. Not in water. Not for torsionable applications. As supply and interconnecting cable for measuring, controlling and regulating acc. to DIN VDE 0113. For computer units, control equipments on machine tools assembly lines, conveyors and production lines for controlling, regulating and monitoring work processes, industrial plants and production lines when temporarily freely moved and no periodic recurrence without forced guidance. Cross sections above 10 mm² are energy supply cable for fixed installations on machine tools in production lines. This product is also part of our Windlink® offer dedicated to wind turbines.

Design

- **Conductor**

Copper bare stranded, VDE 0295 Class 5

- **Insulation**

PVC Type YI 2 (Polyvinyl chloride)

- **Outer sheath**

PVC Type YM 2 (Polyvinyl chloride), colour grey,

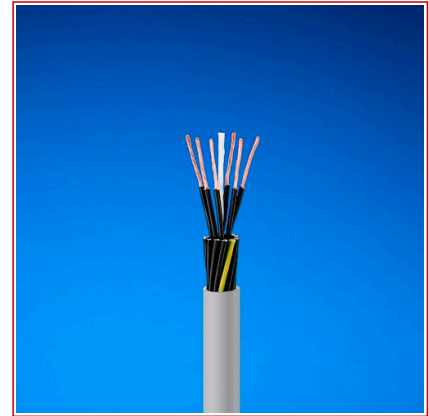
- **Core identification**

according to DIN VDE 0293:1990-01

JZ/OZ: black, white printed numbers and with/or without green/yellow core

JB: coloured cores according to HD 308 S2

Cables for special applications on request



Standards

International

Manufacturer specification



Lead free
Yes



Conductor flexibility
Flexible class
5



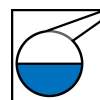
Rated Voltage
U_o/U (Um)
300 / 500 V



Cable flexibility
Flexible



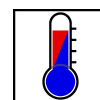
Mechanical resistance to impacts
Normal industrial



Chemical resistance
Occasional contact yes



Fire retardant
IEC
60332-1



Ambient dynamic operating temperature, range
-15 .. 70 °C

YY Control Cables

Characteristics

| Construction characteristics | |
|---|--------------------------------|
| Conductor material | Bare copper |
| Core identification | Black cores with white numbers |
| Insulation | PVC compound type YI 2 |
| Outer sheath | PVC compound type YM 2 |
| Lead free | Yes |
| Conductor flexibility | Flexible class 5 |
| Sheath colour | Grey |
| Electrical characteristics | |
| Test voltage | 2 kV |
| Rated Voltage U _o /U (U _m) | 300 / 500 V |
| Mechanical characteristics | |
| Cable flexibility | Flexible |
| Mechanical resistance to impacts | Normal industrial use |
| Usage characteristics | |
| Ozone resistance | Yes |
| Chemical resistance | Occasional contact yes |
| Fire retardant | IEC 60332-1 |
| Ambient dynamic operating temperature, range | -15 .. 70 °C |
| Ambient static operating temperature, range | -40 .. 70 °C |
| Dynamic bending factor | 20 (xD) |
| Bending factor when installed | 10 (xD) |
| RoHS conform | Yes |
| Field of application | Indoor |
| Silicon free | Yes |

Product List

☎=Make to order, 🏭=Make to stock

| Nexans ref. | Number of cores | Conductor cross-section (mm ²) | Copper content (kg/km) | Nominal outer diameter (mm) | Approximate net weight (kg/km) | With Green/Yellow core |
|-------------|-----------------|--|------------------------|-----------------------------|--------------------------------|------------------------|
| 🏭 78703002 | 2 | 0.5 | 9.6 | 4.7 | 32 | No |
| 🏭 78803002 | 2 | 0.5 | 9.6 | 4.7 | 32 | No |
| 🏭 78813002 | 2 | 0.5 | 9.6 | 4.7 | 32 | No |
| 🏭 78703003 | 3 | 0.5 | 14.4 | 5.1 | 39 | Yes |
| 🏭 78803003 | 3 | 0.5 | 14.4 | 5.1 | 39 | Yes |
| 🏭 78813003 | 3 | 0.5 | 14.4 | 5.1 | 39 | Yes |
| 🏭 78703004 | 4 | 0.5 | 19.2 | 5.4 | 46 | Yes |
| 🏭 78803004 | 4 | 0.5 | 19.2 | 5.4 | 46 | Yes |
| 🏭 78813004 | 4 | 0.5 | 19.2 | 5.4 | 46 | Yes |
| 🏭 78703005 | 5 | 0.5 | 24 | 6.2 | 57 | Yes |
| 🏭 78803005 | 5 | 0.5 | 24 | 6.2 | 57 | Yes |
| 🏭 78813005 | 5 | 0.5 | 24 | 6.2 | 57 | Yes |
| 🏭 78703006 | 6 | 0.5 | 28.8 | 7.2 | 64 | Yes |

☎ = Make to order, 🏭 = Make to stock

YY Control Cables

| Nexans ref. | Number of cores | Conductor cross-section (mm ²) | Copper content (kg/km) | Nominal outer diameter (mm) | Approximate net weight (kg/km) | With Green/Yellow core |
|-------------|-----------------|--|------------------------|-----------------------------|--------------------------------|------------------------|
| ☎ 78703007 | 7 | 0.5 | 34 | 6.6 | 70 | Yes |
| ☎ 78803007 | 7 | 0.5 | 34 | 6.6 | 70 | Yes |
| ☎ 78813007 | 7 | 0.5 | 34 | 6.6 | 70 | Yes |
| ☎ 78703008 | 8 | 0.5 | 38 | 7.0 | 77 | Yes |
| ☎ 78703010 | 10 | 0.5 | 48 | 8.4 | 97 | Yes |
| ☎ 78703012 | 12 | 0.5 | 58 | 8.6 | 110 | Yes |
| ☎ 78803012 | 12 | 0.5 | 58 | 8.6 | 110 | Yes |
| ☎ 78813012 | 12 | 0.5 | 58 | 8.6 | 110 | Yes |
| ☎ 78703016 | 16 | 0.5 | 77 | 10.1 | 148 | Yes |
| ☎ 78703018 | 18 | 0.5 | 86 | 10.1 | 160 | Yes |
| ☎ 78703021 | 21 | 0.5 | 101 | 11.4 | 188 | Yes |
| ☎ 78703025 | 25 | 0.5 | 120 | 12.5 | 219 | Yes |
| ☎ 78703030 | 30 | 0.5 | 144 | 13.2 | 264 | Yes |
| ☎ 78703034 | 34 | 0.5 | 163 | 13.8 | 283 | Yes |
| ☎ 78703040 | 40 | 0.5 | 192 | 14.8 | 333 | Yes |
| ☎ 78703042 | 42 | 0.5 | 202 | 15.4 | 353 | Yes |
| ☎ 78703050 | 50 | 0.5 | 240 | 17.4 | 441 | Yes |
| ☎ 78703065 | 65 | 0.5 | 312 | 19.4 | 556 | Yes |
| ☎ 78703080 | 80 | 0.5 | 384 | 21.2 | 680 | Yes |
| ☎ 78703100 | 100 | 0.5 | 480 | 23.4 | 844 | Yes |
| ☎ 78803102 | 2 | 0.75 | 14.4 | 5.1 | 39 | No |
| ☎ 78813102 | 2 | 0.75 | 14.4 | 5.1 | 39 | No |
| ☎ 78703102 | 2 | 0.75 | 14.4 | 5.1 | 39 | No |
| ☎ 78803103 | 3 | 0.75 | 21.6 | 5.4 | 50 | Yes |
| ☎ 78813103 | 3 | 0.75 | 21.6 | 5.4 | 50 | Yes |
| ☎ 78703103 | 3 | 0.75 | 21.6 | 5.4 | 50 | Yes |
| ☎ 78803104 | 4 | 0.75 | 29 | 5.9 | 60 | Yes |
| ☎ 78813104 | 4 | 0.75 | 29 | 5.9 | 60 | Yes |
| ☎ 78703104 | 4 | 0.75 | 29 | 5.9 | 59 | Yes |
| ☎ 78803105 | 5 | 0.75 | 36 | 6.7 | 72 | Yes |
| ☎ 78813105 | 5 | 0.75 | 36 | 6.7 | 72 | Yes |
| ☎ 78703105 | 5 | 0.75 | 36 | 6.7 | 68 | Yes |
| ☎ 78703106 | 6 | 0.75 | 43 | 6.9 | 81 | Yes |
| ☎ 78803107 | 7 | 0.75 | 50 | 7.1 | 90 | Yes |
| ☎ 78813107 | 7 | 0.75 | 50 | 7.1 | 90 | Yes |
| ☎ 78703107 | 7 | 0.75 | 50 | 7.1 | 90 | Yes |
| ☎ 78703108 | 8 | 0.75 | 57 | 7.4 | 100 | Yes |
| ☎ 78703109 | 9 | 0.75 | 65 | 8.1 | 128 | Yes |
| ☎ 78703110 | 10 | 0.75 | 72 | 9.1 | 124 | Yes |
| ☎ 78803112 | 12 | 0.75 | 86 | 9.4 | 146 | Yes |
| ☎ 78813112 | 12 | 0.75 | 86 | 9.4 | 146 | Yes |
| ☎ 78703112 | 12 | 0.75 | 86 | 9.4 | 146 | Yes |

☎ = Make to order, ☎ = Make to stock

YY Control Cables

| Nexans ref. | Number of cores | Conductor cross-section (mm ²) | Copper content (kg/km) | Nominal outer diameter (mm) | Approximate net weight (kg/km) | With Green/Yellow core |
|-------------|-----------------|--|------------------------|-----------------------------|--------------------------------|------------------------|
| 78703114 | 14 | 0.75 | 101 | 9.9 | 166 | Yes |
| 78703115 | 15 | 0.75 | 108 | 10.6 | 182 | Yes |
| 78703116 | 16 | 0.75 | 115 | 10.8 | 215 | Yes |
| 78803118 | 18 | 0.75 | 130 | 11.1 | 211 | Yes |
| 78813118 | 18 | 0.75 | 130 | 11.1 | 211 | Yes |
| 78703118 | 18 | 0.75 | 130 | 11.1 | 211 | Yes |
| 78703121 | 21 | 0.75 | 151 | 12.4 | 254 | Yes |
| 78803125 | 25 | 0.75 | 180 | 13.4 | 289 | Yes |
| 78813125 | 25 | 0.75 | 180 | 13.4 | 289 | Yes |
| 78703125 | 25 | 0.75 | 180 | 13.4 | 289 | Yes |
| 78703132 | 32 | 0.75 | 230 | 14.9 | 380 | Yes |
| 78703134 | 34 | 0.75 | 245 | 15.1 | 378 | Yes |
| 78703141 | 41 | 0.75 | 295 | 16.0 | 452 | Yes |
| 78703142 | 42 | 0.75 | 302 | 16.0 | 461 | Yes |
| 78703150 | 50 | 0.75 | 360 | 18.1 | 559 | Yes |
| 78703161 | 61 | 0.75 | 439 | 19.8 | 673 | Yes |
| 78703165 | 65 | 0.75 | 468 | 22.7 | 774 | Yes |
| 78703180 | 80 | 0.75 | 576 | 22.1 | 879 | Yes |
| 78703200 | 100 | 0.75 | 720 | 24.6 | 1084 | Yes |
| 78770543 | 3 | 0.75 | 21.6 | 5.4 | 50 | No |
| 78803202 | 2 | 1 | 19.2 | 5.3 | 49 | No |
| 78813202 | 2 | 1 | 19.2 | 5.3 | 49 | No |
| 78703202 | 2 | 1 | 19.2 | 5.3 | 49 | No |
| 78803203 | 3 | 1 | 29 | 5.6 | 60 | Yes |
| 78813203 | 3 | 1 | 29 | 5.6 | 60 | Yes |
| 78703203 | 3 | 1 | 29 | 5.6 | 60 | Yes |
| 78803204 | 4 | 1 | 38 | 6.5 | 69 | Yes |
| 78813204 | 4 | 1 | 38 | 6.5 | 69 | Yes |
| 78803205 | 5 | 1 | 48 | 6.7 | 83 | Yes |
| 78813205 | 5 | 1 | 48 | 6.7 | 83 | Yes |
| 78770474 | 3 | 1 | 29 | 5.8 | 57 | No |
| 78770475 | 4 | 1 | 38 | 6.1 | 69 | No |
| 78703205 | 5 | 1 | 48 | 6.7 | 83 | Yes |
| 78703206 | 6 | 1 | 58 | 7.0 | 101 | Yes |
| 78803207 | 7 | 1 | 67 | 7.5 | 104 | Yes |
| 78813207 | 7 | 1 | 67 | 7.5 | 104 | Yes |
| 78703207 | 7 | 1 | 67 | 7.5 | 104 | Yes |
| 78703208 | 8 | 1 | 77 | 8.0 | 120 | Yes |
| 78703209 | 9 | 1 | 86 | 9.9 | 161 | Yes |
| 78703210 | 10 | 1 | 96 | 9.9 | 161 | Yes |
| 78803212 | 12 | 1 | 115 | 9.9 | 174 | Yes |
| 78813212 | 12 | 1 | 115 | 9.9 | 174 | Yes |

☎ = Make to order, 📦 = Make to stock

YY Control Cables

| Nexans ref. | Number of cores | Conductor cross-section (mm ²) | Copper content (kg/km) | Nominal outer diameter (mm) | Approximate net weight (kg/km) | With Green/Yellow core |
|-------------|-----------------|--|------------------------|-----------------------------|--------------------------------|------------------------|
| ☎ 78703212 | 12 | 1 | 115 | 9.9 | 174 | Yes |
| ☎ 78703214 | 14 | 1 | 134 | 10.6 | 202 | Yes |
| ☎ 78703215 | 15 | 1 | 144 | 11.1 | 215 | Yes |
| ☎ 78703216 | 16 | 1 | 154 | 11.1 | 226 | Yes |
| ☎ 78803218 | 18 | 1 | 173 | 11.7 | 252 | Yes |
| ☎ 78813218 | 18 | 1 | 173 | 11.7 | 252 | Yes |
| ☎ 78703218 | 18 | 1 | 173 | 11.7 | 252 | Yes |
| ☎ 78703221 | 21 | 1 | 202 | 13.1 | 305 | Yes |
| ☎ 78803225 | 25 | 1 | 240 | 14.3 | 346 | Yes |
| ☎ 78813225 | 25 | 1 | 240 | 14.3 | 346 | Yes |
| ☎ 78703225 | 25 | 1 | 240 | 14.3 | 346 | Yes |
| ☎ 78703234 | 34 | 1 | 326 | 16.3 | 477 | Yes |
| ☎ 78703241 | 41 | 1 | 394 | 17.7 | 566 | Yes |
| ☎ 78703242 | 42 | 1 | 403 | 17.9 | 578 | Yes |
| ☎ 78703250 | 50 | 1 | 480 | 19.1 | 682 | Yes |
| ☎ 78703204 | 4 | 1 | 38 | 6.5 | 69 | Yes |
| ☎ 78703300 | 100 | 1 | 960 | 27.5 | 1398 | Yes |
| ☎ 78703261 | 61 | 1 | 586 | 20.5 | 883 | Yes |
| ☎ 78703265 | 65 | 1 | 624 | 21.5 | 949 | Yes |
| ☎ 78703280 | 80 | 1 | 768 | 24.3 | 1092 | Yes |
| ☎ 78803304 | 4 | 1.5 | 58 | 7.4 | 92 | Yes |
| ☎ 78703334 | 34 | 1.5 | 490 | 18.8 | 642 | Yes |
| ☎ 78813304 | 4 | 1.5 | 58 | 7.4 | 92 | Yes |
| ☎ 78703342 | 42 | 1.5 | 605 | 20.5 | 798 | Yes |
| ☎ 78703350 | 50 | 1.5 | 720 | 22.2 | 926 | Yes |
| ☎ 78703304 | 4 | 1.5 | 58 | 7.4 | 92 | Yes |
| ☎ 78703361 | 61 | 1.5 | 878 | 23.7 | 1119 | Yes |
| ☎ 78803305 | 5 | 1.5 | 72 | 7.9 | 109 | Yes |
| ☎ 78703365 | 65 | 1.5 | 936 | 24.7 | 1020 | Yes |
| ☎ 78813305 | 5 | 1.5 | 72 | 7.9 | 109 | Yes |
| ☎ 78703380 | 80 | 1.5 | 1152 | 28.3 | 1545 | Yes |
| ☎ 78703400 | 100 | 1.5 | 1440 | 30.1 | 1808 | Yes |
| ☎ 78703305 | 5 | 1.5 | 72 | 7.9 | 109 | Yes |
| ☎ 78703306 | 6 | 1.5 | 86 | 8.6 | 133 | Yes |
| ☎ 78803307 | 7 | 1.5 | 101 | 9.0 | 147 | Yes |
| ☎ 78813307 | 7 | 1.5 | 101 | 9.0 | 147 | Yes |
| ☎ 78703307 | 7 | 1.5 | 101 | 9.0 | 147 | Yes |
| ☎ 78703308 | 8 | 1.5 | 115 | 9.5 | 169 | Yes |
| ☎ 78703309 | 9 | 1.5 | 130 | 10.5 | 185 | Yes |
| ☎ 78703310 | 10 | 1.5 | 144 | 11.3 | 210 | Yes |
| ☎ 78803312 | 12 | 1.5 | 173 | 11.6 | 237 | Yes |
| ☎ 78813312 | 12 | 1.5 | 173 | 11.6 | 237 | Yes |

☎ = Make to order, ☎ = Make to stock

YY Control Cables

| Nexans ref. | Number of cores | Conductor cross-section (mm ²) | Copper content (kg/km) | Nominal outer diameter (mm) | Approximate net weight (kg/km) | With Green/Yellow core |
|-------------|-----------------|--|------------------------|-----------------------------|--------------------------------|------------------------|
| ☎ 78703312 | 12 | 1.5 | 173 | 11.6 | 237 | Yes |
| ☎ 78703314 | 14 | 1.5 | 202 | 12.0 | 271 | Yes |
| ☎ 78703316 | 16 | 1.5 | 230 | 12.9 | 310 | Yes |
| ☎ 78803318 | 18 | 1.5 | 259 | 13.7 | 347 | Yes |
| ☎ 78813318 | 18 | 1.5 | 259 | 13.7 | 347 | Yes |
| ☎ 78703318 | 18 | 1.5 | 259 | 13.7 | 347 | Yes |
| ☎ 78703321 | 21 | 1.5 | 302 | 14.9 | 403 | Yes |
| ☎ 78803325 | 25 | 1.5 | 360 | 16.9 | 490 | Yes |
| ☎ 78813325 | 25 | 1.5 | 360 | 16.9 | 490 | Yes |
| ☎ 78703325 | 25 | 1.5 | 360 | 16.9 | 490 | Yes |
| ☎ 78703332 | 32 | 1.5 | 461 | 18.1 | 606 | Yes |
| ☎ 78770442 | 3 | 1.5 | 43 | 6.7 | 78 | No |
| ☎ 78770308 | 4 | 1.5 | 58 | 7.2 | 97 | No |
| ☎ 78813303 | 3 | 1.5 | 43 | 6.5 | 79 | Yes |
| ☎ 78703303 | 3 | 1.5 | 43 | 6.5 | 79 | Yes |
| ☎ 78803303 | 3 | 1.5 | 43 | 6.5 | 79 | Yes |
| ☎ 78703302 | 2 | 1.5 | 29 | 6.2 | 61 | No |
| ☎ 78813302 | 2 | 1.5 | 29 | 6.2 | 61 | No |
| ☎ 78803302 | 2 | 1.5 | 29 | 6.2 | 61 | No |
| ☎ 78753402 | 2 | 2.5 | 48 | 7.3 | 92 | No |
| ☎ 78853403 | 3 | 2.5 | 72 | 7.7 | 119 | Yes |
| ☎ 78863403 | 3 | 2.5 | 72 | 7.7 | 119 | Yes |
| ☎ 78753403 | 3 | 2.5 | 72 | 7.7 | 119 | Yes |
| ☎ 78853404 | 4 | 2.5 | 96 | 8.5 | 148 | Yes |
| ☎ 78863404 | 4 | 2.5 | 96 | 8.5 | 148 | Yes |
| ☎ 78753404 | 4 | 2.5 | 96 | 8.5 | 148 | Yes |
| ☎ 78853405 | 5 | 2.5 | 120 | 9.7 | 180 | Yes |
| ☎ 78863405 | 5 | 2.5 | 120 | 9.7 | 180 | Yes |
| ☎ 78753405 | 5 | 2.5 | 120 | 9.7 | 180 | Yes |
| ☎ 78853407 | 7 | 2.5 | 168 | 10.1 | 232 | Yes |
| ☎ 78753407 | 7 | 2.5 | 168 | 10.1 | 232 | Yes |
| ☎ 78753408 | 8 | 2.5 | 192 | 11.3 | 274 | Yes |
| ☎ 78753412 | 12 | 2.5 | 288 | 13.9 | 377 | Yes |
| ☎ 78753418 | 18 | 2.5 | 432 | 17.1 | 575 | Yes |
| ☎ 78753425 | 25 | 2.5 | 600 | 20.7 | 786 | Yes |
| ☎ 78753434 | 34 | 2.5 | 816 | 21.7 | 1080 | Yes |
| ☎ 78753450 | 50 | 2.5 | 1200 | 28.7 | 1566 | Yes |
| ☎ 78853504 | 4 | 4 | 154 | 10.2 | 219 | Yes |
| ☎ 78863504 | 4 | 4 | 154 | 10.2 | 219 | Yes |
| ☎ 78753504 | 4 | 4 | 154 | 10.2 | 219 | Yes |
| ☎ 78753505 | 5 | 4 | 192 | 11.6 | 269 | Yes |
| ☎ 78753507 | 7 | 4 | 269 | 12.8 | 356 | Yes |

☎ = Make to order, ☎ = Make to stock

YY Control Cables

| Nexans ref. | Number of cores | Conductor cross-section (mm ²) | Copper content (kg/km) | Nominal outer diameter (mm) | Approximate net weight (kg/km) | With Green/Yellow core |
|-------------|-----------------|--|------------------------|-----------------------------|--------------------------------|------------------------|
| ☎ 78753503 | 3 | 4 | 115 | 9.3 | 176 | Yes |
| ☎ 78753603 | 3 | 6 | 173 | 11.0 | 255 | Yes |
| ☎ 78853604 | 4 | 6 | 230 | 12.3 | 323 | Yes |
| ☎ 78863604 | 4 | 6 | 230 | 12.3 | 323 | Yes |
| ☎ 78753604 | 4 | 6 | 230 | 12.3 | 323 | Yes |
| ☎ 78753605 | 5 | 6 | 288 | 13.5 | 391 | Yes |
| ☎ 78753607 | 7 | 6 | 403 | 14.9 | 519 | Yes |
| ☎ 78753703 | 3 | 10 | 288 | 14.0 | 411 | Yes |
| ☎ 78753704 | 4 | 10 | 384 | 15.0 | 513 | Yes |
| ☎ 78753705 | 5 | 10 | 480 | 17.1 | 650 | Yes |
| ☎ 78753707 | 7 | 10 | 672 | 18.8 | 844 | Yes |
| ☎ 78753803 | 3 | 16 | 462 | 18.2 | 653 | Yes |
| ☎ 78753804 | 4 | 16 | 614 | 19.2 | 844 | Yes |
| ☎ 78753805 | 5 | 16 | 480 | 21.3 | 1012 | Yes |
| ☎ 78753807 | 7 | 16 | 1075 | 23.8 | 1367 | Yes |
| ☎ 78753854 | 4 | 25 | 960 | 23.0 | 1252 | Yes |
| ☎ 78753855 | 5 | 25 | 1200 | 25.8 | 1548 | Yes |
| ☎ 78753857 | 7 | 25 | 1680 | 28.5 | 2078 | Yes |
| ☎ 78753904 | 4 | 35 | 1344 | 26.7 | 1658 | Yes |
| ☎ 78763905 | 5 | 35 | 1680 | 29.5 | 2029 | Yes |
| ☎ 78751907 | 7 | 35 | 2352 | 38.0 | 3156 | Yes |
| ☎ 78772985 | 5 | 50 | 2400 | 34.7 | 2920 | Yes |
| ☎ 78770270 | 4 | 50 | 1920 | 31.5 | 2360 | Yes |
| ☎ 78770267 | 4 | 70 | 2688 | 35.7 | 3201 | Yes |
| ☎ 78772986 | 5 | 70 | 3360 | 40.0 | 4011 | Yes |
| ☎ 78770268 | 4 | 95 | 3648 | 41.1 | 4259 | Yes |
| ☎ 78772987 | 5 | 95 | 4560 | 45.6 | 5292 | Yes |
| ☎ 78770269 | 4 | 120 | 4608 | 45.1 | 5263 | Yes |

☎ = Make to order, ☎ = Make to stock

Selling delivery information

Marking

- Nexans Rheyflex® 500 Y-JZ- 300/500 n G s VDE Reg. No 7691 CE RoHS conform
- Nexans Rheyflex® 500 Y-OZ- 300/500 n x s VDE Reg. No 7691 CE RoHS conform
- Nexans Rheyflex® 500 Y-JB- 300/500 n G s VDE Reg. No 7691 CE RoHS conform
- Nexans Rheyflex® 500 Y-OB- 300/500 n x s VDE Reg. No 7691 CE RoHS conform

X-ON Electronics

Largest Supplier of Electrical and Electronic Components

Click to view similar products for [nexans](#) manufacturer:

Other Similar products are found below :

[M22759/34-16-0](#) [3X1YY50](#) [30-286-22-1](#) [M27500-20ML1T08](#) [2112/10-1SJ-24](#) [2112/10-1SJ-22](#) [M22759/87-16-96](#) [M22759/32-20-2](#)
[M81044/12-16-9](#) [SUPERPOL 10](#) [M81044/9-8-9](#) [2112/10-14\(GAW805AB14\)](#) [M22759/87-12-9](#) [M22759/34-22-2](#) [M81044/12-22-9](#)
[M22759/92-20-2](#) [EN2714-013A004F](#) [M22759/44-16-9](#) [M22759/34-16-9](#) [M22759/187-16-96](#) [M22759/43-24-6](#) [M22759/41-24-9](#) [M27500-](#)
[24SB1T23](#) [M22759/81-22-5](#) [M81044/12-16-5](#) [30-284-14-2](#) [M81044/12-20-9](#) [M81044/9-10-9](#) [M27500-24SN3N23](#) [M22759/43-24-8](#)
[M22759/34-20-0](#) [M22759/33-26-7](#) [M22759/32-24-9](#) [M22759/43-10-9](#) [M22759/41-20-9](#) [HM2N18-9](#) [2698096-5999](#) [M22759/91-12-9](#)
[M22759/43-24-5](#) [M22759/43-24-7](#) [M22759/11-20-9](#) [13-DRX23P03P](#) [30-285-22-2](#) [M27500-22TG5T14](#) [M22759/33-26-9](#) [13-DRS26P04P-V1](#)
[M22759/33-26-3](#) [M22759/34-14-9](#) [M22759/91-20-2](#) [M22759/87-16-6](#)