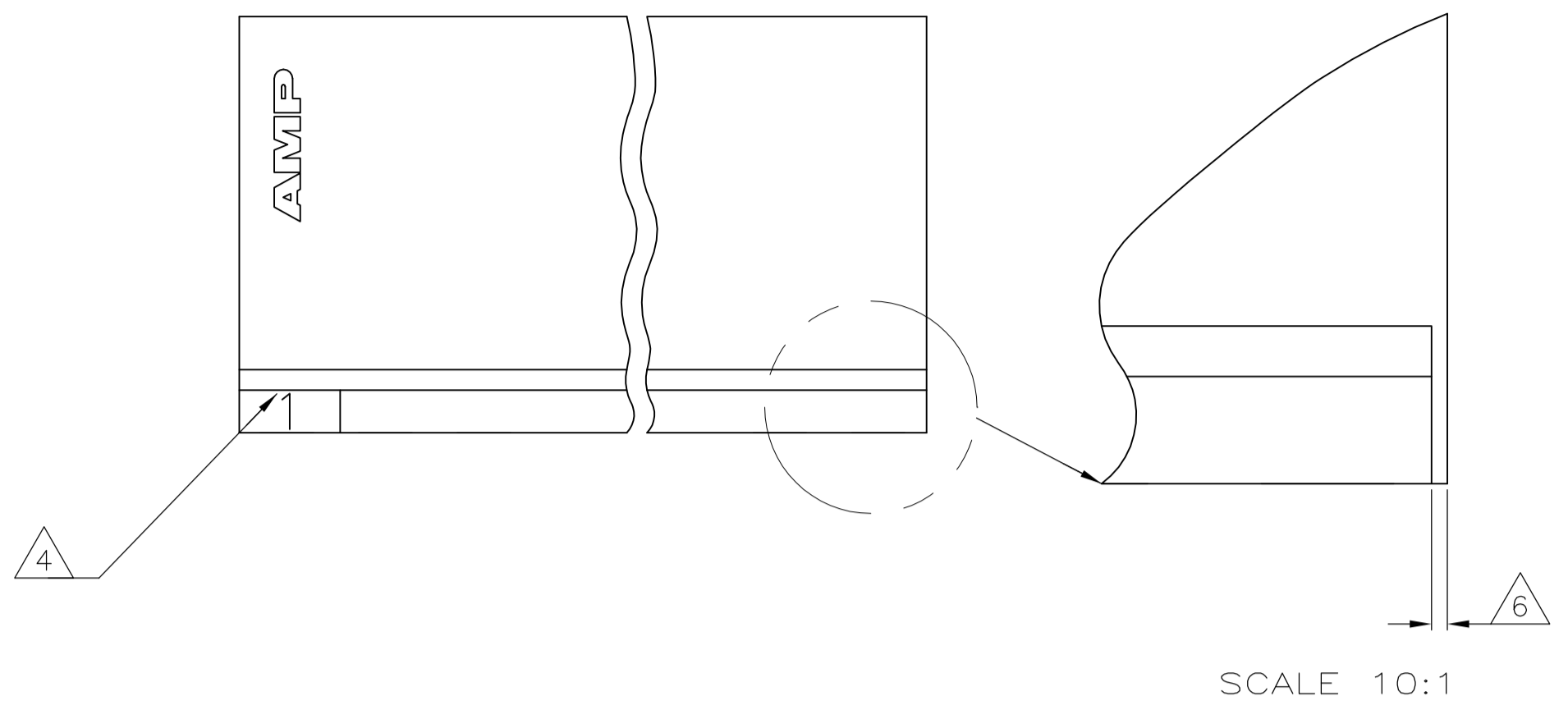
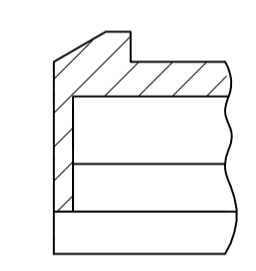
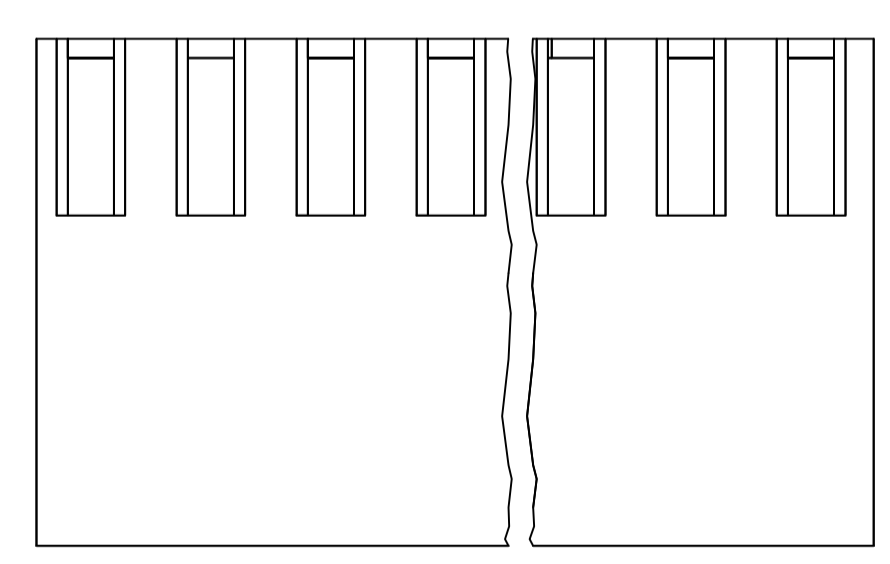
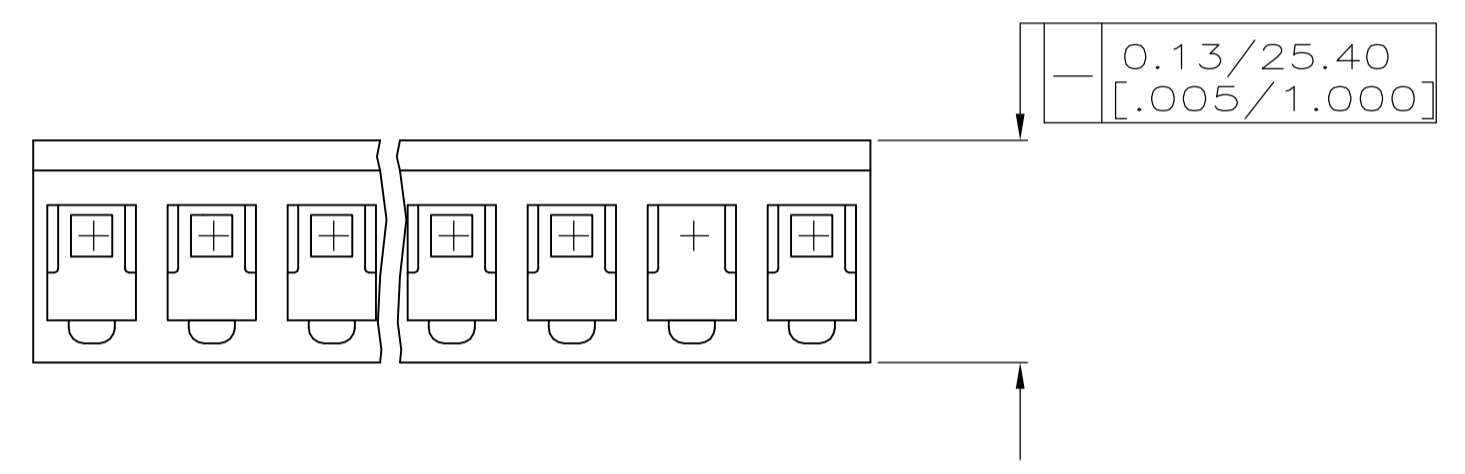
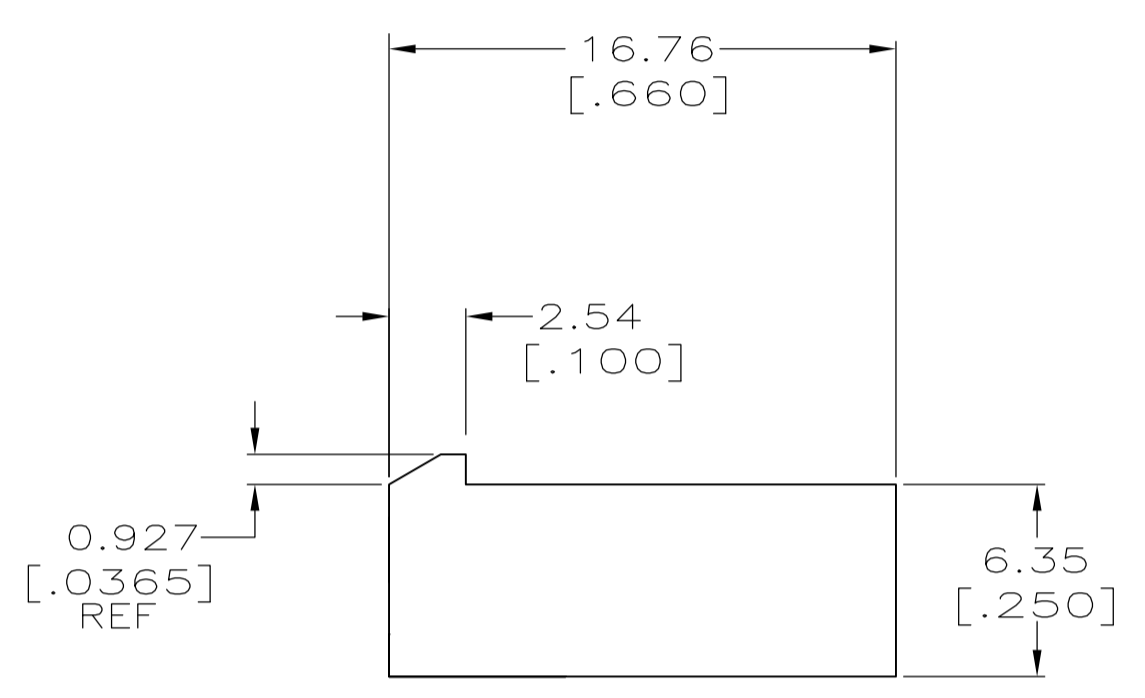
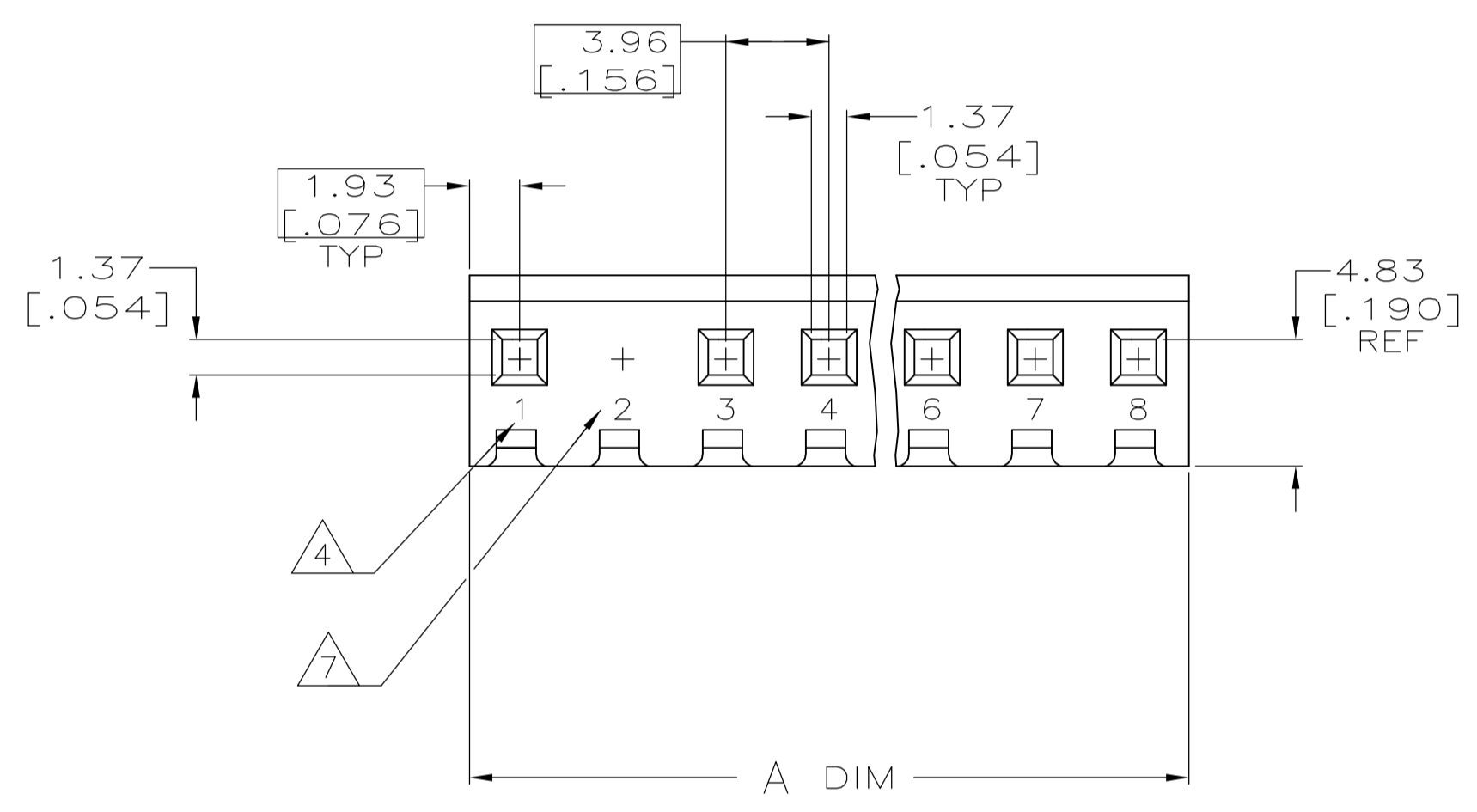


LOC		DIST		REVISIONS			
CM	0	P	LTR	DESCRIPTION	DATE	DWN	APVD
C				REVISED PER ECO-12-007807	06AUG12	KH	SM

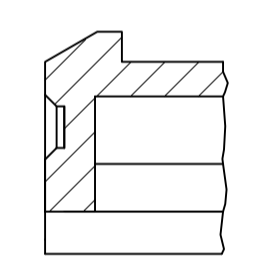
- 1 UNIT ACCEPTS 1.14 [.045] SQUARE OR ROUND POST.
- 2 UNIT ACCEPTS STANDARD SL-156 CONTACTS.
- 3 UNIT ACCEPTS KEYING PLUG 640254-1 AND KEYING PIN 640255-1.
- 4 CIRCUIT I.D. NUMBER(S), TO BE LOCATED SEQUENTIALLY AS SHOWN OR ONLY NO.1 CIRCUIT PLACED ON LOCKING RAMP.
- 5 DIMENSIONS IN BRACKETS ARE IN INCHES.
- 6 OPTIONAL CONSTRUCTION (BOTH CORNERS) UP TO 1.27 [.050].
- 7 CIRCUIT 2 IS MOLDED CLOSED, USING EITHER OPTION A OR OPTION B.



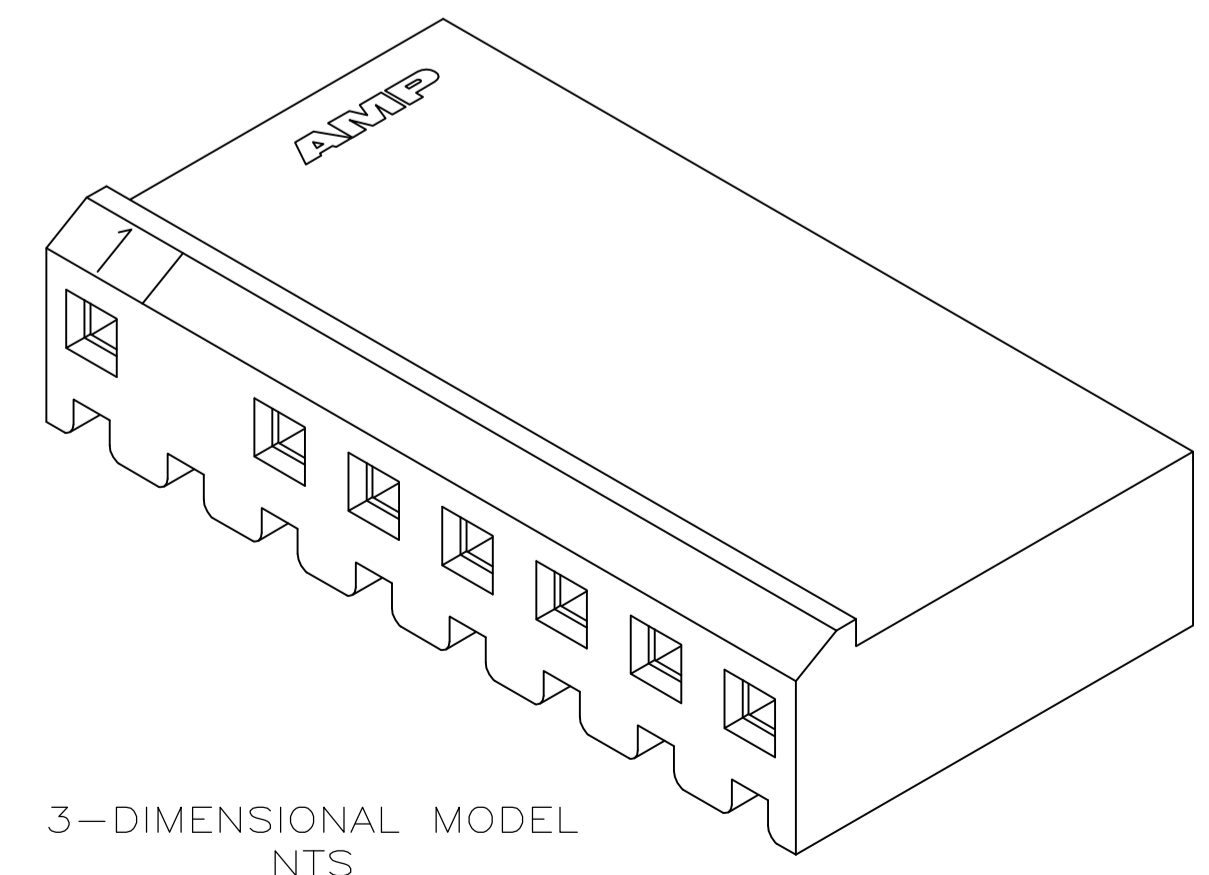
SCALE 10:1



OPTION A



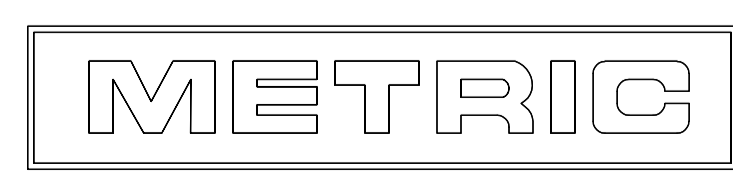
OPTION B



3-DIMENSIONAL MODEL NTS

COLOR	±	NO. OF CIRCUITS	PART NUMBER
ORANGE	11.81 [.465]	3	9-794115-3
NATURAL	75.31 [2.965]	19	1-794115-9
NATURAL	29.85 [1.175]	11	1-794115-1
NATURAL	31.65 [1.246]	8	794115-8
NATURAL	11.81 [.465]	3	794115-3
COLOR	A ±0.25 [.010]		

PRELIMINARY, NOT FOR PRODUCTION
PRELIMINARY, NOT FOR PRODUCTION



THIS DRAWING IS A CONTROLLED DOCUMENT.		DIN 17-MAR-2000		L. McEACHIN	
DIMENSIONS: mm [INCHES]		TOLERANCES UNLESS OTHERWISE SPECIFIED:		CIRK 17-MAR-2000	
0. PLC	± -	APVD		J. ELLIS	
1. PLC	± -	PRODUCT SPEC		J. ELLIS	
2. PLC	± 0.13 [.005]	APPLICATION SPEC		-	
3. PLC	± -	WEIGHT		-	
4. PLC	± -	MATERIAL		NYLON, UL 94V-0	
ANGLES	± 0°30'	FINISH		-	
MATERIAL NYLON, UL 94V-0		FINISH -		SIZE A1	
CUSTOMER DRAWING		SCALE 4:1		SHEET 1 OF 1	



TE Connectivity
HOUSING WITH LOCKING RAMP,
CIRCUIT NO. 2 CLOSED,
SL-156

X-ON Electronics

Largest Supplier of Electrical and Electronic Components

Click to view similar products for [Headers & Wire Housings](#) category:

Click to view products by [TE Connectivity](#) manufacturer:

Other Similar products are found below :

[95000-104TRLF](#) [10135584-644402LF](#) [DF62W-EP2022PCA](#) [95000-106TRLF](#) [DF62W-2022SCA](#) [DF62W-EP2022PC](#) [2203348](#) [DF62W-2022SC](#) [1084018](#) [1029039](#) [1084017](#) [802-10-012-10-002000](#) [1112640](#) [1112639](#) [000-34000](#) [0009482033](#) [0009507031](#) [57102-S06-03LF](#) [57202-S52-04LF](#) [PCN6-15S-2.5E](#) [0039019024](#) [58102-G61-06LF](#) [582553-1](#) [0009485154](#) [0009508121](#) [0022285053](#) [0050291907](#) [018731A](#) [LY20-4P-DT1-P1E-BR](#) [02.125.8002.8](#) [60101931](#) [60598-1 \(Cut Strip\)](#) [M1625-3R/100](#) [61062-3](#) [61082-181009](#) [636-1427](#) [638009-1](#) [641938-9](#) [641991-4](#) [644168-1](#) [647662-1](#) [65039-019ELF](#) [65781-047](#) [65817-002LF](#) [65817-015LF](#) [65863-015LF](#) [66207-023LF](#) [67016-026LF](#) [67046-001LF](#) [67095-007LF](#)