

# spacer sleeves

[ Brass, nickel-plated, Polyamide black ]

(\*Makrolon grey upon request)



## Standard range – spacer sleeves [ Plastic ]

### Technical data [ Reference values ]

Material	Specific contact resistance	Dielectric strength	Heat resistance
Polyamide	$> 10^{12}$ Ohm/cm	80 kV/mm	110°C
*Makrolon	$> 10^{16}$ Ohm/cm	36 kV/mm	140°C

**\*All Polyamide spacer sleeves are also available in Makrolon! Please quote dimensions and quantity in your inquiry!**

### EXECUTION DII [ Internal / internal thread ]

Order No.	Execution	Material	Diameter D (mm)	Diameter d (mm)	Standard lengths in mm increments
384 / 1.5 x (length)	DH	Polyamide	4	1.5	from 2 mm to 10 mm
384 / 2.2 x	DH	Polyamide	4	2.2	from 2 mm to 50 mm
385 / 2.7 x	DH	Polyamide	5	2.7	from 2 mm to 55 mm
386 / 3.4 x	DH	Polyamide	6	3.4	from 2 mm to 60 mm
388 / 4.2 x	DH	Polyamide	8	4.2	from 2 mm to 60 mm
3810 / 5.2 x	DH	Polyamide	10	5.2	from 2 mm to 57 mm
3810 / 6.2 x	DH	Polyamide	10	6.2	from 2 mm to 55 mm
3812 / 8.2 x	DH	Polyamide	12	8.2	from 2 mm to 63 mm
3816 / 10.5 x	DH	Polyamide	16	10.5	from 2 mm to 50 mm

**Ordering example:** 386 / 3.4 x 25 mm = DH / Polyamide / 6 (3.4) x 25 mm

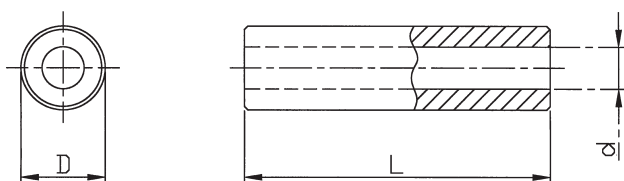


- Tolerance for length dimensions: +/- 0.1 mm

- Available from stock. Delivery times for intermediate lengths and special versions upon request.



## Standard range – spacer sleeves [ Brass, nickel plated ]



Order No.	Execution	Material	Diameter D (mm)	Diameter d (mm)	Standard lengths in mm
314 / 2.1 x (length)	DH	Brass	4.0	2.1	2, 3, 4, 5, 6, 7, 8, 9, 10, 12,
315 / 2.6 x	DH	Brass	5.0	2.6	2, 3, 4, 5, 6, 7, 8, 9, 10, 12, 15,
316 / 3.2 x	DH	Brass	6.0	3.2	2, 3, 4, 5, 6, 7, 8, 9, 10, 12, 15, 18, 20, 25, 30
318 / 4.3 x	DH	Brass	8.0	4.3	2, 3, 4, 5, 6, 7, 8, 9, 10, 12, 15, 18, 20, 25, 30
3110 / 5.3 x	DH	Brass	10.0	5.3	2, 3, 4, 5, 6, 7, 8, 9, 10, 12, 15, 18, 20, 25, 30

