

Subracks, individual components

Horizontal rails



Double front horizontal rail, with 10 mm extension (B1)

To accommodate guide rails and for the attachment of front panels.

- Front projection and pitch pattern of holes based on IEEE 1101.10 and IEC 60 297-5-101, for use of type IV and VII injector/extractor handles
- HP pitch patterns of holes for the precise installation of guide rails
- M4 thread on end face
- Straight-through core hole

Material:

Extruded aluminium section

Surface finish:

Clear-chromated

Usable width (HP)	Packs of	Model No. RP
84	1	3687.724

! Also required:

Assembly screws M4 x 12, packs of 100, Model No. RP 3654.300, see page 576.



Rear horizontal rail (C1)

To accommodate guide rails and for the attachment of Z rails, insulating strips or conductive strips and backplanes.

- Tapped holes M2.5 on a 1 HP pitch pattern
- HP pitch patterns of holes for the precise installation of guide rails in the HP pitch pattern
- M2.5 thread for the installation of Z-rails, or backplanes.
- M4 thread on end face
- Straight-through core hole
- Horizontal rail 192 HP without machining on the end faces. Suitable for cutting to length

Material:

Extruded aluminium section

Surface finish:

Clear-chromated or anodised

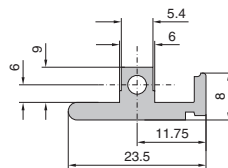
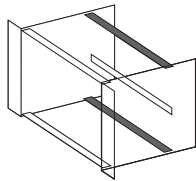
Usable width (HP)	Packs of	Model No. RP
21	1	3685.991
40	1	3684.962
42	1	3684.570
63	1	3684.571
84	1	3684.572
84	2	3685.268 ¹⁾
192	1	3688.002 ²⁾

¹⁾ Including 4 assembly screws

²⁾ Anodised

! Also required:

Assembly screws M4 x 12, packs of 100, Model No. RP 3654.300, see page 576.



Rear horizontal rail, reinforced version (C2)

For use with high loads.

Material:

Extruded aluminium section

Surface finish:

Clear-chromated

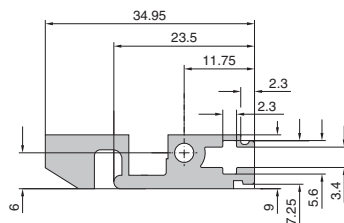
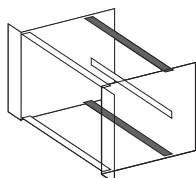
Usable width (HP)	Packs of	Model No. RP
42	1	3687.604
63	1	3687.605
84	1	3687.606

! Also required:

Assembly screws M4 x 12, packs of 100, Model No. RP 3654.300, see page 576.

+ Accessories:

Threaded inserts, see page 504.



X-ON Electronics

Largest Supplier of Electrical and Electronic Components

Click to view similar products for [rittal](#) manufacturer:

Other Similar products are found below :

[KS1434](#) [KS1483](#) [1002.600](#) [1004.600](#) [1037.500](#) [1077.500](#) [1302.600](#) [1578.450](#) [1578.530](#) [1579.450](#) [9516.000](#) [9521.050](#) [9522.000](#) [1522.010](#)
[1523.010](#) [1524.010](#) [1525.010](#) [1526.010](#) [1527.010](#) [1529.010](#) [1530.010](#) [1530.510](#) [1536.510](#) [1538.510](#) [1541.510](#) [1542.510](#) [1547.500](#) [2383250](#)
[2383350](#) [2384010](#) [2384020](#) [9101.210](#) [9107.210](#) [9108.210](#) [9111.210](#) [9113.210](#) [9113700](#) [9114.210](#) [9116.210](#) [9117.210](#) [9118.210](#) [9119.210](#)
[9516.100](#) [9518.000](#) [9519.000](#) [9519.100](#) [9520.100](#) [9521.100](#) [9523.100](#) [9524.000](#)