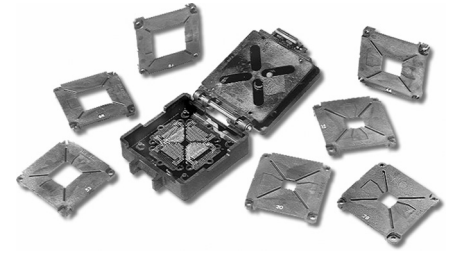




Series 537 Insert Plates for Universal PLCC ZIF Test Socket

FEATURES

- Conveniently Hand-insert 7 Separate Insert Plates into 'Live Bug' Universal PLCC ZIF Test Socket (P/N 84-537-21) to hold 7 Differently-sized PLCC Footprints
- Four Mounting Holes (2 Bifurcated) Mate with Mounting Post in Socket Base for Secure Assembly



GENERAL SPECIFICATIONS

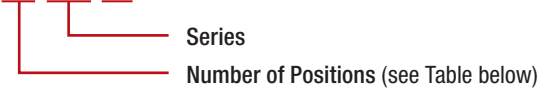
- **INSERT:** black UL 94V-0 glass-filled Polyphenylene Sulfide (PPS)
- **OPERATING TEMPERATURE:** -85°F [-65°C] to 500°F [260°C]
- **CONTACT BLOCK AND LATCH HINGE:** available individually

MOUNTING CONSIDERATIONS

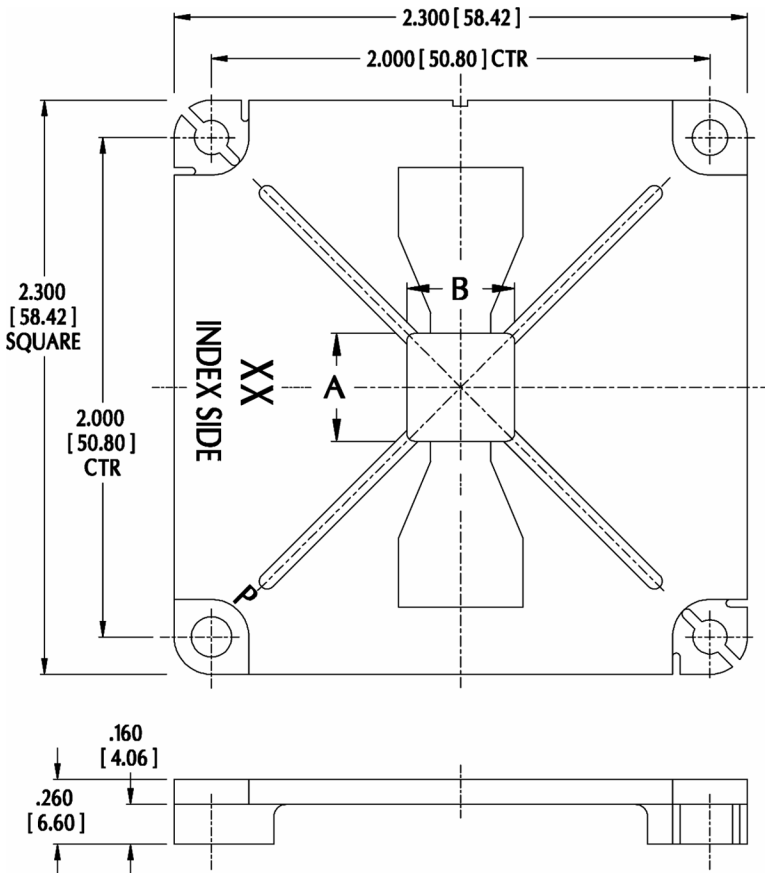
- **SUGGESTED PCB HOLE SIZE:** 0.035 ±0.002 [0.89 ±0.05] dia.

ORDERING INFORMATION

XX-537-20



USE P/N 1110832 WHEN ORDERING ALL SEVEN INSERT PLATES



| No. Positions | Dim "A" | Dim. "B" |
|---------------|------------------------------------|------------------------------------|
| 20 | 0.395 to 0.397 [10.03 to 10.08] | 0.395 to 0.397 [10.03 to 10.08] |
| 28 | 0.495 to 0.497 [12.57 to 12.62] | 0.495 to 0.497 [12.57 to 12.62] |
| 32 | 0.495 to 0.497 [12.57 to 12.62] | 0.595 to 0.597 [15.11 to 15.16] |
| 44 | 0.695 to 0.697 [17.65 to 17.70] | 0.695 to 0.697 [17.65 to 17.70] |
| 52 | 0.795 to 0.797 [20.19 to 20.24] | 0.795 to 0.797 [20.19 to 20.24] |
| 68 | 0.995 to 0.997 [25.27 to 25.32] | 0.995 to 0.997 [25.27 to 25.32] |
| 84 | 1.195 to 1.197 [30.35 to 30.40] | 1.195 to 1.197 [30.35 to 30.40] |

ALL DIMENSIONS: INCHES [MILLIMETERS]
 ALL TOLERANCES: ±0.005 [0.13] UNLESS OTHERWISE SPECIFIED
 FOR TEST SOCKET, SEE [DATA SHEET 10010](#)
 CONSULT FACTORY FOR OTHER SIZES AND CONFIGURATIONS

CUSTOMIZATION: ARIES SPECIALIZES IN CUSTOM DESIGN AND PRODUCTION. SPECIAL MATERIALS, PLATINGS, SIZES, AND CONFIGURATIONS CAN BE FURNISHED, DEPENDING ON QUANTITY.

ARIES RESERVES THE RIGHT TO CHANGE PRODUCT GENERAL SPECIFICATIONS WITHOUT NOTICE

PRINTOUTS OF THIS DOCUMENT MAY BE OUT-OF-DATE AND SHOULD BE CONSIDERED UNCONTROLLED



ARIES
ELECTRONICS, INC.

2609 Bartram Road • Bristol, PA 19007-6810 USA
 TEL 215-781-9956 • FAX 215-781-9845
WWW.ARIESELEC.COM • INFO@ARIESELEC.COM



10012.indd
 Rev. 2.1
 1 of 1

X-ON Electronics

Largest Supplier of Electrical and Electronic Components

Click to view similar products for [IC & Component Sockets](#) category:

Click to view products by [Aries](#) manufacturer:

Other Similar products are found below :

[714-43-102-31-012000](#) [0066-3-17-15-30-14-02-0](#) [0134-0-15-15-32-27-04-0](#) [614-DG5](#) [6527-0-00-15-00-00-03-0](#) [670](#) [672](#) [673](#) [712-93-120-41-001000](#) [714-93-104-31-018000](#) [8059-4G1-LF](#) [807-22-001-10-001101](#) [807-22-001-10-003101](#) [807-22-001-10-004101](#) [807-22-001-10-006101](#) [807-22-001-30-011101](#) [807-22-001-30-012101](#) [807-22-001-30-013101](#) [807-22-001-30-014101](#) [8-1437531-4](#) [8150-6P10](#) [833-93-034-10-001000](#) [835-43-014-10-001000](#) [851-41-006-10-001000](#) [851-43-008-20-001000](#) [851-43-014-20-001000](#) [851-93-006-20-001000](#) [851-93-010-20-001000](#) [853-43-020-10-001000](#) [86.010.0053.0](#) [116-43-306-41-003000](#) [116-43-308-41-007000](#) [116-87-308-41-007101](#) [PX-68LCC](#) [PX-84LCC](#) [121-13-318-41-001000](#) [121-13-320-41-001000](#) [121-13-308-41-001000](#) [123-43-314-41-801000](#) [123-43-420-41-001000](#) [123-43-636-41-001000](#) [123-87-320-41-001101](#) [122-13-316-41-001000](#) [123-13-624-41-001000](#) [123-43-306-41-001000](#) [123-43-322-41-801000](#) [123-43-428-41-001000](#) [123-43-624-41-001000](#) [12-3513-11](#) [123-91-320-41-001000](#)