



Nest & Stack Totes

EXTREMELY DURABLE INDUSTRIAL-GRADE TOTES

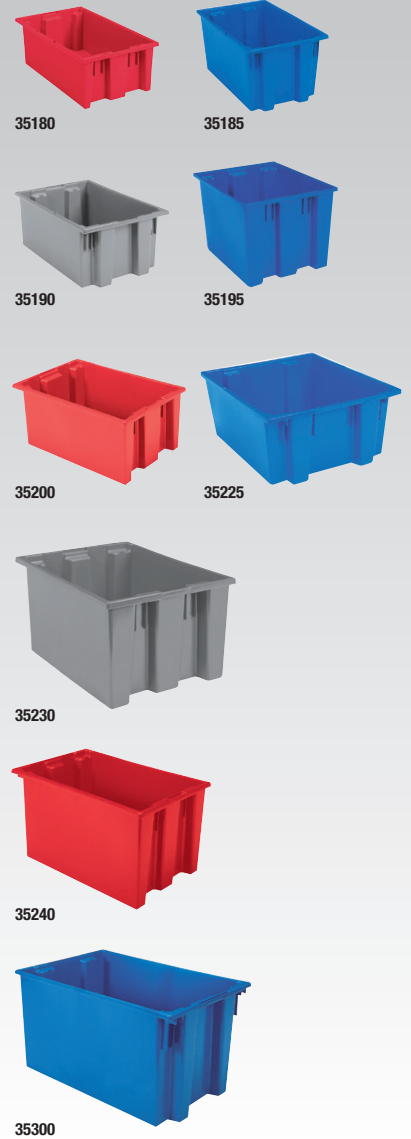


FEATURES

- 1 Smooth surfaces are easy to clean
- 2 Comfortable grip makes handling easy
- 3 Ribs under the lip prevent jamming when nested
- 4 Textured bottoms provide a no-slip grip on conveyor belts
- 5 Wide stacking ledge allows totes to securely stack without lids in place
- 6 Lids have tie holes for extra security

PRODUCT HIGHLIGHTS

- **FUNCTIONAL** – Ideal for shipping, transfer and storage applications
- **STACKBLE** – NSTs stack with or without lids for storage and shipping
- **NESTABLE** – Totes nest when empty
- **DURABLE** – Strong, industrial-grade polymer will not rust, corrode or bend out of shape even when fully loaded
- **COST-EFFECTIVE** – Long service life resulting in lower replacement costs
- **FDA-SANCTIONED** – NSTs are manufactured from FDA-sanctioned materials
- **VARIETY** – Available in 9 sizes and 3 colors: Red, Blue, Gray
- **CUSTOMIZE** – Custom colors and hot stamping available

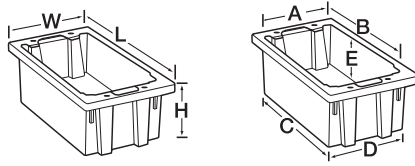


COLORS

Red, Blue, Gray



800.253.2467
akro-mils.com



Nest & Stack Totes (NSTs)	Outside Dimensions (In.)			Inside Dimensions (In.)					Capacity/Qty.				Accessories			
	Model No.	L	W	H	A	B	C	D	E	Cu. Ft.	Gal	Lbs.	Tote Ctn. Qty.	Stacking Height	Lid Model	Lid Ctn. Qty.
35180	18	11	6	10	16	15¼	9¾	5¾	0.5	3.7	45	6	6	35181	6	-
35185	18	11	9	10	16	15¼	9¾	8¾	0.76	5.69	60	6	6	35181	6	-
35190	19½	15½	10	14½	17	16	13¼	9¾	1.2	9	65	6	6	35191	6	-
35195	19½	15½	13	14½	17	15¼	13¾	12¾	1.7	12.93	85	6	6	35191	6	-
35200	19½	13½	8	12¾	17¾	16¾	11½	7¾	0.8	6.1	55	6	6	35201	6	-
35225	23½	19½	10	18¼	20¾	19¾	16¾	9¾	2	14.98	70	3	6	35231	3	RU843HR1822
35230	23½	19½	13	18¾	20¾	19½	16¾	12¾	2.6	19.4	90	3	6	35231	3	RU843HR1822
35240	23½	15½	12	14¼	20¾	19¾	13	11¾	1.7	12.9	75	3	6	35241	3	RU843HR1422
35300	29½	19½	15	18¼	26¾	25¾	16¾	14¾	3.7	27.4	100	3	6	35301	3	RU843HR1828

One color per carton. Specify color: Red, Blue or Gray. Order in carton quantities.

Label Holders		
Model No.	Pkg. Qty.	Label Size (In.)
35010	6	3¾ x 5
35011	6	3 x 5

ACCESSORIES



Lids
Protect contents from dust and damage, include tie holes



Clear Plastic Label Holders
Accommodate labels up to 3¾" x 5"



RELATED PRODUCTS

Create the perfect storage solution. Combine Nest & Stack Totes with



46-48 Wire Shelving Systems



58 ProCart

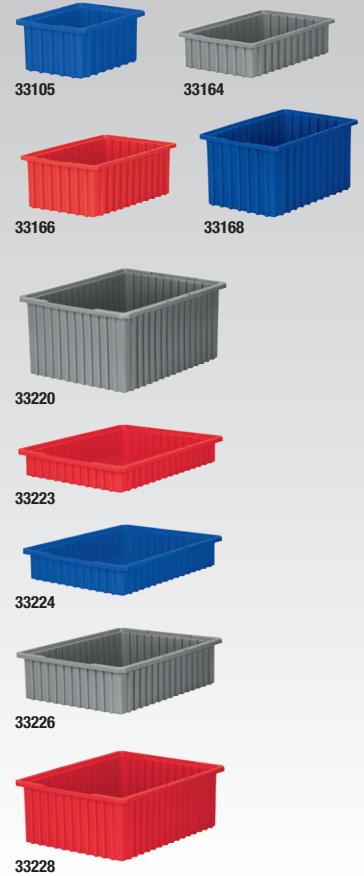
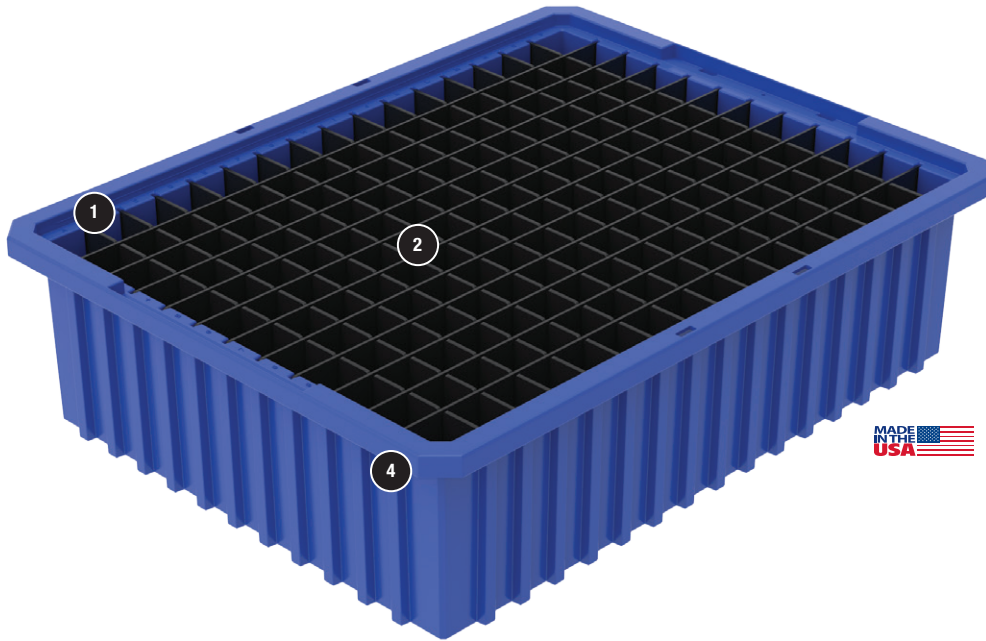


67 Dollies



Akro-Grid

DIVIDABLE GRID CONTAINERS



COLORS

Red, Blue, Clear, Gray



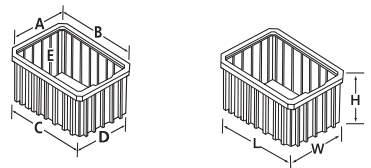
FEATURES

- 1 Divider slots allow you to create hundreds of compartment sizes
- 2 Dividers (sold separately) allow subdivision of the containers to a 1 1/8" square compartment size
- 3 Molded-in letter/number system for easy parts tracking
- 4 Strong stacking rims and external ribbing provide added strength

PRODUCT HIGHLIGHTS

- **FUNCTIONAL** – Compatible with most racks, shelving and automated storage retrieval systems
- **DURABLE** – Injection-molded from industrial-grade polymers. Resists most solvents and chemicals
- **COST-EFFECTIVE** – Longer service life resulting in lower replacement costs
- **VARIETY** – Available in 9 sizes and 4 colors: Red, Blue, Clear, Gray
- **CUSTOMIZE** – Custom colors and hot stamping available





Akro-Grids Model No.	Outside Dimensions (In.)			Inside Dimensions (In.)					Capacity/Qty.				Accessories				
	L	W	H	A	B	C	D	E	Cu. Ft.	Gal	Lbs.	Bin Ctn. Qty.	Long Divider*	Short Divider*	Divider Pkg. Qty.	Max. No. of Compartments	Steel Dollies
33105	10 $\frac{3}{8}$	8 $\frac{1}{4}$	5	6 $\frac{1}{16}$	9 $\frac{1}{16}$	9 $\frac{1}{16}$	6 $\frac{1}{2}$	4 $\frac{1}{8}$.16	1.2	25	20	42105 (5)	41105 (7)	6	48	-
33164	16 $\frac{1}{2}$	10 $\frac{3}{8}$	4	9 $\frac{1}{16}$	14 $\frac{3}{16}$	14 $\frac{13}{16}$	9 $\frac{3}{16}$	3 $\frac{1}{8}$.29	2.2	20	12	42164 (7)	41164 (11)	6	96	-
33166	16 $\frac{1}{2}$	10 $\frac{3}{8}$	6	9 $\frac{1}{16}$	14 $\frac{1}{8}$	14 $\frac{3}{8}$	9 $\frac{1}{8}$	5 $\frac{1}{16}$.44	3.3	35	8	42166 (7)	41166 (11)	6	96	-
33168	16 $\frac{1}{2}$	10 $\frac{3}{8}$	8	9 $\frac{1}{16}$	14 $\frac{3}{16}$	14 $\frac{3}{8}$	9 $\frac{3}{16}$	7 $\frac{1}{16}$.59	4.4	40	6	42168 (7)	41168 (11)	6	96	-
33220	22 $\frac{1}{2}$	17 $\frac{3}{8}$	10	15 $\frac{1}{4}$	20 $\frac{1}{8}$	19 $\frac{3}{8}$	14 $\frac{3}{8}$	9 $\frac{1}{8}$	1.66	12.4	50	2	42220 (11)	41220 (15)	6	192	RU843HR1621
33223	22 $\frac{1}{2}$	17 $\frac{3}{8}$	3	15 $\frac{1}{16}$	20 $\frac{1}{2}$	20 $\frac{7}{16}$	15 $\frac{3}{8}$	2 $\frac{1}{2}$.47	3.5	30	6	42223 (11)	41223 (15)	6	192	RU843HR1621
33224	22 $\frac{3}{8}$	17 $\frac{3}{8}$	4	15 $\frac{1}{16}$	20 $\frac{1}{8}$	20	15	3 $\frac{1}{8}$.61	4.6	30	6	42224 (11)	41224 (15)	6	192	RU843HR1621
33226	22 $\frac{3}{8}$	17 $\frac{3}{8}$	6	15 $\frac{1}{16}$	20 $\frac{1}{8}$	19 $\frac{3}{8}$	14 $\frac{3}{8}$	5 $\frac{1}{8}$.96	7.2	40	4	42226 (11)	41226 (15)	6	192	RU843HR1621
33228	22 $\frac{3}{8}$	17 $\frac{3}{8}$	8	15 $\frac{1}{16}$	20 $\frac{1}{8}$	19 $\frac{3}{8}$	14 $\frac{3}{8}$	7 $\frac{1}{16}$	1.30	9.7	50	3	42228 (11)	41228 (15)	6	192	RU843HR1621

One color per carton. Specify Red, Blue, Gray or Clear. Order in carton quantities. *() = max # of dividers.

Clear Snap-On Lids		
Model No.	Fits Grid No.	Ctn. Qty.
33011	33105	10
33061	33164, 33166, 33168	4
33023	33220, 33223, 33224, 33226, 33228	3

Label Holders		
Model No.	Fits Grid No.	Pkg. Qty.
35010	Fits all except 33164, 33223, 33224	6
35011	33164, 33224	6

Adhesive Label		
Model No.	Fits Grid No.	Pkg. Qty.
29203	33223	10 sheets (120 total)

ACCESSORIES

Dividers
Allow subdivision of the containers down to 1 $\frac{1}{8}$ " square compartments

Clear Plastic Label Holders
Snap securely on any side of the container (except 33223)

Clear Snap-On Lids
Durable injection-molded lids keep contents clean yet visible

RELATED PRODUCTS

Create the perfect storage solution, pair your Akro-Grids with





Attached Lid Containers : KeepBox™

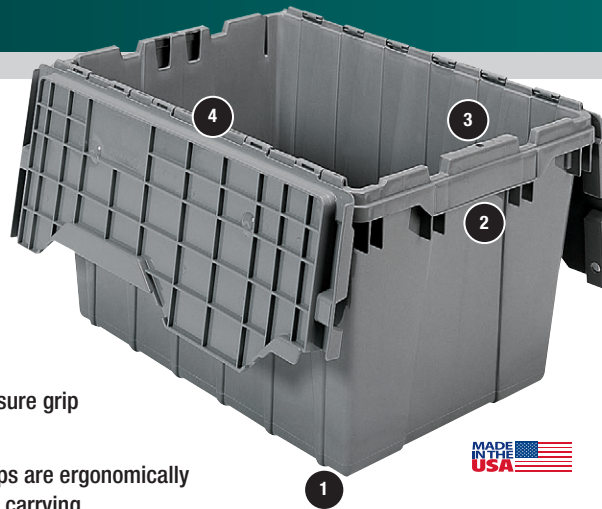
DISTRIBUTION CONTAINERS/STORAGE BOXES

Attached Lid Containers

INDUSTRIAL-GRADE

FEATURES

- 1 Textured bottoms provide a sure grip on conveyor belts
- 2 Strong molded-in handle grips are ergonomically designed for easy lifting and carrying
- 3 Padlock eye on both ends accommodate security ties
- 4 Reinforced hinge pins for years of smooth lid operation



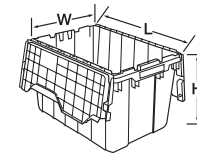
COLORS

Red, Blue, Green, Gray



PRODUCT HIGHLIGHTS

- **FUNCTIONAL** – Reusable shipping, distribution, order picking and storage containers
- **SECURE** – Attached lids snap securely closed to protect contents from dust and damage
- **INTERWORKING** – Containers interwork for easy pallet loading
- **STACKABLE and NESTABLE** – Containers stack on closed lids and nest in open lids
- **VARIETY** – 6 sizes and 4 colors. See the chart below for color options per model
- **CUSTOMIZE** – Custom colors and hot stamping available



Attached Lid Containers (ALCs)		Outside Dimensions (In.)			Inside Dimensions Top (In.)			Inside Dimensions Bottom (In.)		Capacity/Qty.					Accessories
Model No.	Available Colors	L	W	H	L	W	H	L	W	Cu. Ft.	Gal.	Lbs.	Container Ctn. Qty.	Stack Cap./Qty. Stacked	Steel Dollies
39085	Blue, Gray	21½	15	9	19¾	14½	8%	18⅞	13¼	1.12	8.5	35	6	35 lbs./5	RU843HR1420
39120	Blue, Green, Red, Gray	21½	15	12½	19¾	14½	12	18⅞	13¼	1.62	12	65	6	65 lbs./5	RU843HR1420
39160	Gray	27	17	12½	25	15½	11	23½	14	2.25	16.83	100	1	100 lbs./4	–
39170	Blue, Gray	21½	15	17	19¾	14½	16%	18⅞	13¼	2.28	17	100	3	100 lbs./3	RU843HR1420
39175	Gray	24	19½	12½	22	18	11	20½	16½	2.3	17.20	80	1	80 lbs./5	–
39280	Gray	28	21	15½	26	19	14	25	18	3.82	28.57	100	1	100 lbs./4	–

Order in carton quantities. Specify color when ordering.

KeepBox™

LIGHT-DUTY STORAGE

PRODUCT HIGHLIGHTS

- **FUNCTIONAL** – Secure, dust-free storage
- **NESTABLE** – Containers nest when empty
- **CLEAR** – Sides keep contents visible
- **REINFORCED** – Hinge pins for years of smooth lid operation



COLOR
Blue/Clear



KeepBox		Outside Dimensions (In.)			Inside Dimensions Top (In.)			Inside Dimensions Bottom (In.)		Capacity/Qty.				
Model No.	Description	L	W	H	L	W	H	L	W	Cu. Ft.	Gal.	Lbs.	Ctn. Qty.	Stack Cap./Qty. Stacked
66486CLDBL	12 gal. KeepBox	21½	15	12½	19¾	14½	12	17%	12¾	1.60	12	25	6	5

Order in carton quantities.



Straight Wall Containers

INDUSTRIAL REUSABLE CONTAINERS

800.253.2467
akro-mils.com

HEAVY-DUTY TOTES
& CONTAINERS



MADE IN THE USA



37208



37678



37682



37616

COLORS

Red, Gray

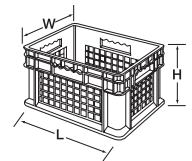


FEATURES

- 1 1" wall thickness for secure stacking
- 2 Strong 1" wide stacking rims and external ribbing provide added strength
- 3 Straight walls provide efficient cubing in trucks and on pallets
- 4 Open .72 x .90 mesh pattern allows high visibility and good airflow
- 5 Large handles on 4 sides for easy and comfortable grip

PRODUCT HIGHLIGHTS

- **FUNCTIONAL** – Reusable shipping, storage and work-in-process containers
- **SOLID** – Smooth inner walls for easy, sanitary cleaning
- **MESH** – Allow air ventilation and drainage
- **DURABLE** – Injection-molded from industrial-grade polymers
- **VARIETY** – Available in 12 configurations, 4 sizes and 2 colors: Red, Gray
- **CUSTOMIZE** – Custom colors and hot stamping available



Straight Wall Containers (SWCs)			Outside Dimensions (In.)			Inside Dimensions Bottom (In.)			Capacity/Qty.			Stacked Capacity/Qty.		Accessories
Model No. Mesh Side & Base	Model No. Mesh Side/Solid Base	Model No. Solid Side & Base	L	W	H	L	W	H	Cu. Ft.	Gal.	Container Ctn. Qty.	Solid Bottom	Mesh Bottom	Steel Dollies
37208	37278	37288	15¾	11¾	8¾	14	10	8	0.89	5.12	12	83 lbs./6	30 lbs./6	–
37608	37678	37688	23¾	15¾	8¾	22	14	8	1.78	11.19	4	83 lbs./6	45 lbs./6	RU843HR1624
37612	37672	37682	23¾	15¾	12¾	22	14	12	2.67	8.32	3	125 lbs./5	45 lbs./5	RU843HR1624
37616	37676	37686	23¾	15¾	16¾	22	14	16	3.55	11.07	2	150 lbs./4	45 lbs./4	RU843HR1624

Order in carton quantities. Specify color when ordering.

RELATED PRODUCTS

Add more productivity to your Straight Wall Containers with



46-48 Wire Shelving Systems



67 Dollies

Akro-Tubs

IDEAL FOR FOOD PROCESSING, INDUSTRIAL ACTIVITIES

FEATURES

- 1 Rolled top rim forms comfortable handles
- 2 Extra-thick walls for superior strength
- 3 Rounded corner design adds strength to stress points
- 4 Ribs prevent jamming when nested



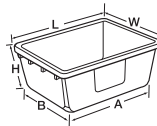
PRODUCT HIGHLIGHTS

- **FDA-SANCTIONED** – Tub manufactured from FDA-sanctioned materials
- **SMOOTH SURFACE** – Easy to clean
- **NESTABLE** – Nests when empty to conserve space
- **CAPACITY** – 75-lb. weight capacity per tub
- **AKRO-TUB RACK** – Use the Akro-Tub Rack (RA6TR4MR) to provide easy loading and transport of multiple tubs

Akro-Tub Model No.	Dimensions (In.)					Capacity/Qty.			
	L	W	H	A	B	Cu. Ft.	Gal.	Lbs.	Ctn. Qty.
34240	19	24½	9½	20½	15½	1.95	14.6	75	6
RA6TR4MR	24	24	73	–	–	–	–	600	–

Order in carton quantities.

COLOR Gray



AKRO-TUB RACK

Model No. RA6TR4MR
Holds 6 Akro-Tubs for up to 600 lb. total capacity. Welded steel frame with 12-gauge base and bolted-on casters (Akro-Tubs sold separately). Casters: 4" x 2" Mold-On Rubber: 2 Rigid, 2 Swivel



UP TO 600 LBS.

Cross-Stack Akro-Tub

FEATURES

- 1 Stacking grooves allow stable 90° stacks
- 2 Molded-in handles for easy lifting
- 3 Extra-thick walls and reinforcing ribs provide superior strength



COLOR Gray

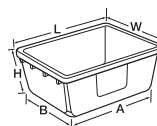


PRODUCT HIGHLIGHTS

- **FDA-SANCTIONED** – Tub manufactured from FDA-sanctioned materials
- **FUNCTIONAL** – Industrial-grade tub is compatible with standard 36" shelving and conveyor systems
- **NESTABLE** – Nesting when empty conserves storage space
- **STACKABLE** – Cross-stacking
- **SMOOTH SURFACE** – Easy to clean

Cross-Stack Akro-Tub Model No.	Outside Dimensions (In.)					Capacity/Qty.			
	L	W	H	A	B	Cu. Ft.	Gal.	Lbs.	Ctn. Qty.
34301	17¼	11	8	13¼	7¼	0.52	3.85	6	6
34302	17¼	11	12	12¾	7	0.74	5.51	6	6
34303	23¾	17¼	8	19¾	14	1.31	9.81	6	6
34304	23¾	17¼	12	19	13¼	1.92	14.38	6	6
RACR5MR	53	29	62	–	–	–	–	1000	–

Order in carton quantities.



DOUBLE-SIDED CROSS-STACK AKRO-TUB RACK

Model No. RACR5MR
Holds (32) 34301 or (16) 34303 Cross-Stack Akro-Tubs (sold separately). Casters: 5" x 2" Mold-On Rubber: 2 Rigid, 2 Swivel

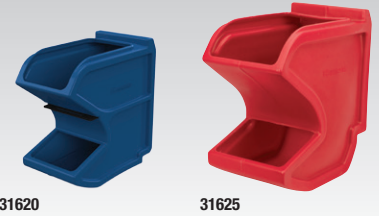


UP TO 1000 LBS.

Easy Flow Gravity Hopper

HOPPER SYSTEM WITH COMPACT VERTICAL DESIGN

800.253.2467
akro-mils.com



COLORS
Red, Blue



FEATURES

- 1 Large angled top opening for easy filling
- 2 Generous picking area provides easy access to loaded product
- 3 First-In-First-Out (FIFO) sliding divider shelf for time-sensitive inventory (for 31620 hopper only)

PRODUCT HIGHLIGHTS

- **FUNCTIONAL** – Allows for proper lot rotation. Great for fasteners, assembly areas, Kanban, inventory stock, merchandise and work cells
- **CAPACITY** – 31620: 50 lbs.; 31625: 75 lbs.
- **DURABLE** – Rotational-molded for strength and durability
- **VARIETY** – Available in 2 sizes and 2 colors. 31625 available in Red and Blue; 31620 available in Blue only

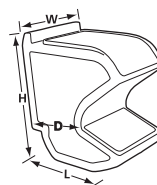
GRAVITY HOPPER FLOOR RACK

Model No. 31625RACK
Holds 9 large or 12 small hoppers per side. 13-gauge steel powder-coated rack has a 900-lb. weight capacity. Hoppers sold separately



Easy Flow Gravity Hopper		Dimensions (In.)				Capacity/Qty.			
Model No.	Description	L	W	H	D	Cu. In.	Gal.	Lbs.	Ctn. Qty.
31620	Small Easy Flow Gravity Hopper	16	8¼	16	10	1400	6	50	1
31625	Large Easy Flow Gravity Hopper	18	10¾	19½	8	2400	10.39	75	1

When ordering 31625 specify color Red or Blue. † Sliding divider shelf with 31620 hopper only.



Accessories		
Model No.	Description	Wt. Cap.
31625RACK	Easy Flow Gravity Hopper Rack 36" x 36" x 69"	900 lbs.
30600DOLLY	Easy Flow Gravity Hopper Dolly with 4" x 1½" Polyolefin Casters	900 lbs.
30600BRACKET	Easy Flow Gravity Hopper Bracket	75 lbs.

ACCESSORIES



30600DOLLY
Optional dolly to mobilize 31625RACK has 4 swivel casters (2 with brakes)



30600BRACKET
Optional bracket to hang hoppers from louvered panels or rail racks



X-ON Electronics

Largest Supplier of Electrical and Electronic Components

Click to view similar products for [akro mills](#) manufacturer:

Other Similar products are found below :

[41460](#) [10123](#) [10164](#) [35231RED](#) [06318](#) [10744](#) [19320](#) [10144](#) [09514](#) [10124](#) [10724](#) [30-239-GRN](#) [30230ESD](#) [05905](#) [30250BLUE](#) [40716](#) [30-239-BLU](#) [30235ESD](#) [30210RED](#) [30150BLUE](#) [05805](#)