

Model

Switch Mode Power Supply

PAS250

250 Watts_{max} output power

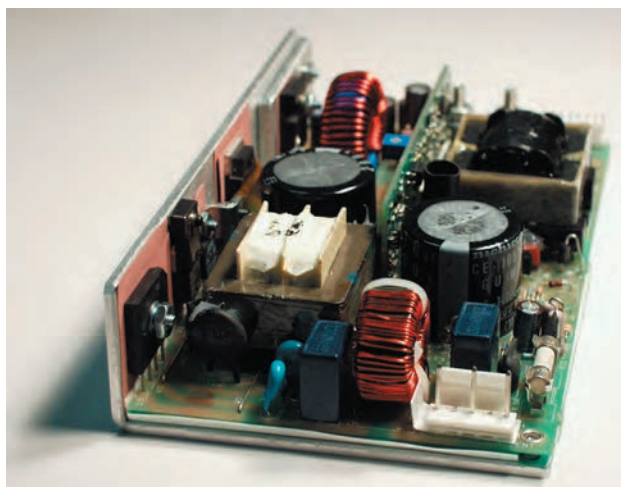
Power Factor Correction

Single Output

H.A.L.T. Highly Accelerated Life Testing
TESTED

Electrical Specifications

Input Voltage:	85-132/180-264 VAC, 47-63 Hz, 1 phase
Input Current:	<6A RMS @ 115 VAC @ full load <3A RMS @ 230 VAC @ full load
Inrush Current:	<35A, pk @ 265 VAC @ cold start <75A, pk @ 132 VAC @ cold start
Harmonic Distortion:	Meets EN61000-3-2 for Class A
EMI Filtering:	Meets CISPR 11 and 22 and FCC Part 15 Class B (conducted)
Input Protection:	Internal AC line fuse; 250 VAC, 8A
Output Power:	250W with 25CFM air; 130W Convection
Line Regulation:	± 0.3%
Load Regulation:	± 0.5%
PARD:	<1% or 50mV; 20MHz bandwidth
Hold-up Time:	16 ms @ full load (120 VAC)
Output Polarity:	Output is floating
Minimum Load:	0% of rated load
Transient Response:	3% for 25% load change @ 1A/μs; 50% duty cycle 50/60 Hz
Output Rise Time:	<100 ms (10% to 90%)
Current Limit:	105-130% of rated current; Hiccup
Remote Sense:	Compensates for up to 250mV of total cable drop
Remote On/Off:	Optional



Thermal Shutdown:	Standard
DC OK:	Standard; Open Collector
Turn-on Delay:	<1 second after application of AC Input
Stability:	<0.1% for 8 hours after 1/2-hour warm up
Isolation:	>20 MΩ @ 100 VDC between output terminals and chassis ground
AC Power Fail:	TTL _{LOW} logic "0" at least 2 ms before output drops 5%; Open Collector
Overvoltage Protect:	Factory set, 125% ±5%, cycle AC to reset
Reverse Voltage:	Output has reverse voltage protection; Reverse current limited to 100% of output rating
Efficiency:	Up to 85%
MTBF:	MIL-STD-HDBK 217E >200,000 hours @ 25°C Highly Accelerated Life Testing

Available Voltage Outputs*

Voltage Codes	Voltages (Volts)	Continuous Current (Amps)
-4	12.0	21
-5	15.0	17
-6	24.0	10.5
-7	28.0	9.0
-8	36.0	7.2
-9	48.0	5.5

* Consult factory for other voltages and OEM quantities.

Note: Standard models are shown **bold**

PART # STRUCTURE:

MODEL - **VOLTAGE CODE** - **OPTION CODES** (See back)
PAS250 - **X** - **ABC....**

Example: Part Number **PAS250-7-GS**= 250W Power Factor Corrected, 28V @ 9A with Field Configurable Options (Droop Share, Single Wire Share and Square Current Limit) and Remote On/Off Invert.
 See 3rd page for PAS250 CODE TABLE AND AVAILABLE OPTIONS.

Model

PAS250



Options

- 12V@0.5A Aux./Fan Drive (A)
- Fan Assembly (C)
- PF Invert (F)
- Single Wire Current Share ±5% (I)
- Molex Connector (K)
- OR-ing Diode (O)
- Remote On/Off Invert (S)
- Droop Current Share ±10% (B)
- DC OK Invert (E)
- Field-Configurable (G)
- Square Current Limit (J)
- Metric Mounting (M)
- Remote On/Off (R)

Safety Compliance

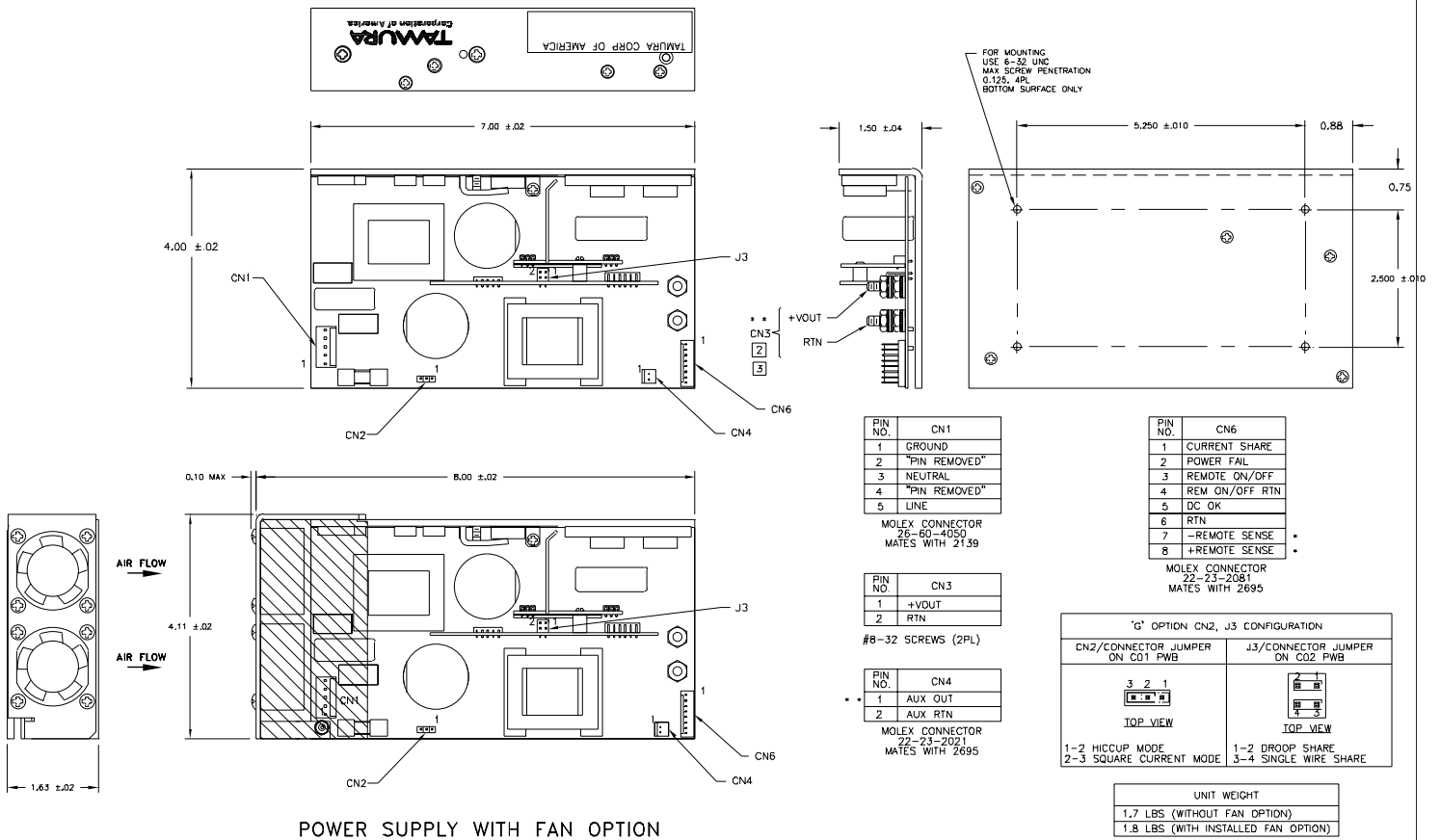
IEC / EN / UL / CSA 60950-1
 CE Declaration to Low Voltage Directive 2006/95/EC and
 RoHS Directive 2011/65/EU

Surge & ESD Test Levels

- N61000-4-5 Level 3
- EN61000-3-2 for Class A
- EN61000-4-4 Level 3
- Meets Class B conducted limits per CISPR 11/22 and 47 CFR 15 subpt B
- EN61000-4-2 Level 2
- EN61000-4-2 Level 3 (Air Only)
- EN61000-4-11

Physical Specifications

- Dimensions: (HxWxL) 1.5" x 4.0" x 7"
- Operating Temp: 0 to 70°C; rated power to 50°C derate linearly to 50% at 70°C.
- Relative Humidity: 5% to 90%, non-condensing
- Storage: -50 to 85°C/20-90% RH
- Altitude: 6561
40,000' storage



POWER SUPPLY WITH FAN OPTION

[3] OPTIONAL—MOLEX CONNECTOR (OPTION 'K'—LIMITED TO 7A) MAY BE SPECIFIED FOR CN3 INSTEAD OF STANDARD OUTPUT STUDS.
 [2] DO NOT EXCEED 17 INCH-LBS (MAX TORQUE) WHEN TIGHTENING TOP NUTS ON OUTPUT STUDS.
 1. FOR CLARITY NOT ALL ITEMS ARE SHOWN IN EACH VIEW.

* **WARNING:** DAMAGE WILL OCCUR IF REMOTE SENSE LEADS (CN6-7 & CN6-8) ARE REVERSED OR USED WITH LOAD DISCONNECTED FROM OUTPUT (CN3).
 * **NOTE:** FOR PROPER REGULATION OF AUXILIARY OUTPUT, APPLY AT LEAST 10% OF RATED LOAD TO VOUT.

© Copyright 2011 TAMURA CORPORATION OF AMERICA. Specifications subject to change without notice.



TAMURA CORPORATION OF AMERICA
 1040 South Andreasen Drive, STE. 100 Escondido, CA 92029-1951
 (951) 699-1270 / Fax: (951) 676-9482
(800) 472-6624 www.tamuracorp.com



PAS250 Power Supply Series

Standard Models
PAS250-X-Y₁ ... Y_n

Tailored Models
PAS250-60ZZZ

Custom Models
PAS250-61ZZZ

	Voltage and Current Ratings		Standard Options
X Codes	Volts	Amps	Y Code Descriptions
1	Not Available		A 12Vdc, 0.5A Auxiliary Output** B Droop Share* C Fan Assembly**
2	Not Available		E DCOK Invert F PF Invert
3	Not Available		G Field configurable options – B, I, and J I Single Wire Share*
4	12.0	21.0	J Square Current Limit K Molex Connector, 7A max. (#8 stud standard)
5	15.0	17.0	M Metric Mounting O ORing Diode
6	24.0	10.5	R Remote On/Off (closed is OFF) S Remote On/Off Invert (open is OFF)
7	28.0	9.0	*Includes Option J **Options A and C are not available together
8	36.0	7.2	
9	48.0	5.5	
			Tailored Units (no safety changes)
			60ZZZ, where ZZZ = Factory Assigned Number Harnesses Added, Special test data, Etc.
			Custom Units (safety critical changes)
			61ZZZ, where ZZZ = Factory Assigned Number

X-ON Electronics

Largest Supplier of Electrical and Electronic Components

Click to view similar products for [Switching Power Supplies](#) category:

Click to view products by [Tamura](#) manufacturer:

Other Similar products are found below :

[70841011](#) [73-551-0005](#) [AAD600S-4-OP](#) [R22095](#) [HWS50A-5/RA](#) [KD0204](#) [9021](#) [S-15F-12](#) [LDIN100150](#) [LPM000-BBAR-01](#) [LPX17S-C](#)
[EVS57-10R6/R](#) [FDC40-24S12](#) [FRV7000G](#) [22929](#) [CQM1IA121](#) [40370121900](#) [VI-PU22-EXX](#) [40370121910](#) [LDIN5075](#) [432703037161](#)
[WRB01X-U](#) [LPX140-C](#) [08-30466-1040G](#) [09-160CFG](#) [70841004](#) [70841025](#) [VPX3000-CBL-DC](#) [LPM000-BBAR-05](#) [LPM000-BBAR-08](#)
[LPM124-OUTA1-48](#) [LPM000-BBAR-07](#) [LPM109-OUTA1-10](#) [LPM616-CHAS](#) [08-30466-1055G](#) [08-30466-2175G](#) [DMB-EWG](#) [TVQF-](#)
[1219-18S](#) [6504-226-2101](#) [CQM1IPS01](#) [XPFM201A+](#) [MAP80-4000G](#) [LFP300F-24-TY](#) [SMP21-L20-DC24V-5A](#) [VI-MUL-ES](#) [08-30466-](#)
[0065G](#) [CME240P-24](#) [VI-RU031-EWWX](#) [08-30466-0028G](#) [S82Y-TS01](#)