

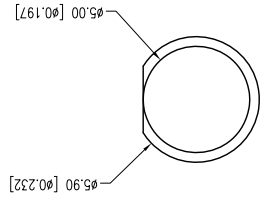
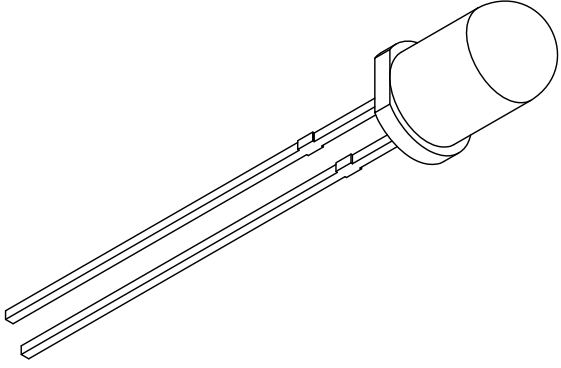
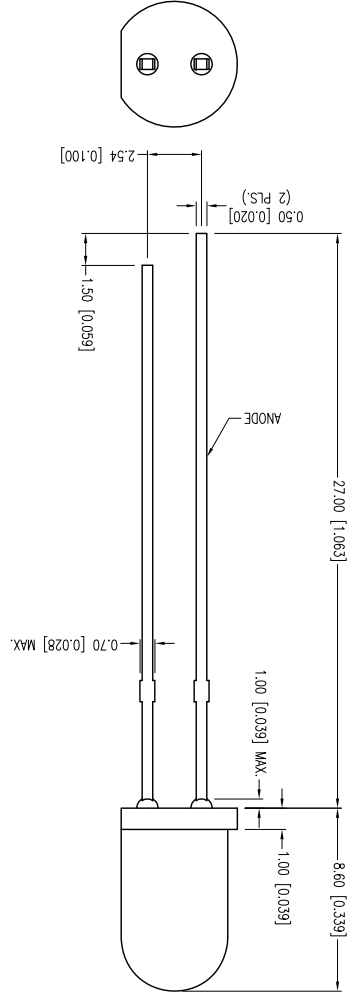
THE INFORMATION CONTAINED IN THIS DOCUMENT IS THE PROPERTY OF LUMEX INC. EXCEPT AS SPECIFICALLY AUTHORIZED IN WRITING BY LUMEX INC., THE HOLDER OF THIS DOCUMENT SHALL KEEP ALL INFORMATION CONTAINED HEREIN CONFIDENTIAL AND SHALL PROTECT SAME IN WHOLE OR IN PART FROM DISCLOSURE AND DISSEMINATION TO ALL THIRD PARTIES.
 CONFIDENTIAL INFORMATION

QUASARBRITE T-5mm (T-1 3/4) 630nm RED LED, WATER CLEAR LENS.
 THE SPECIFICATIONS MAY CHANGE AT ANY TIME WITHOUT NOTICE DUE TO NEW MATERIALS OR PRODUCT IMPROVEMENT.

DATE: 08.17.14	UNIT: mm [INCH]
DRAWN BY: MA	SCALE: NTS
CHKD BY: KF	PAGE: 1 OF 1
APRD BY: KF	

UNCONTROLLED DOCUMENT

*UNLESS OTHERWISE SPECIFIED TOLERANCES PER DECIMAL PRECISION ARE: X=±1 (±0.039), X'=±0.5 (±0.020), X'X=±0.25 (±0.010), X'X'X=±0.127 (±0.005), LEAD SIZE=±0.05 (±0.002), LEAD LENGTH=±0.75 (±0.030), MIN=-0.00
 +DECIMAL PRECISION MAX = +0.00
 -DECIMAL PRECISION



ELECTRO-OPTICAL CHARACTERISTICS Ta=25°C If=20mA

PARAMETER	UNITS	TEST COND	MIN	TYP	MAX
PEAK WAVELENGTH	nm		630		
FORWARD VOLTAGE	Vf	If=20mA	2.1		2.6
REVERSE VOLTAGE	Vr	If=100µA		5.0	
LUMINOUS INTENSITY	mcd	If=20mA	15000		
VIEWING ANGLE	2x theta		15		
EMITTED COLOR:	RED				
EPOXY LENS FINISH:	WATER CLEAR				

PARAMETER	UNITS	MAX
PEAK FORWARD CURRENT*	mA	100
STEADY CURRENT	mA	35
POWER DISSIPATION	mW	90
DERATE FROM 25°C	mW/°C	-1.2
OPERATING TEMP.	°C	-30 TO +80
STORAGE TEMP.	°C	-40 TO +100
SOLDERING TEMP.	°C	+260
2.0mm FROM BODY	SEC.	3

* t<10µs

LIMITS OF SAFE OPERATION AT 25°C

X-ON Electronics

Largest Supplier of Electrical and Electronic Components

Click to view similar products for [Standard LEDs - Through Hole category](#):

Click to view products by [Lumex manufacturer](#):

Other Similar products are found below :

[LTL-10254W](#) [LTL-1214A](#) [LTL-1BEDJ](#) [LTL-2231AT](#) [LTL-3251A](#) [LTL-4262N](#) [LTL-5234](#) [LTL87HTBK](#) [LTL-87HD4B](#) [7383/V7C3-BSTA-L/PR3/MS](#) [HLMP-AG64-X10ZZ](#) [HLMP-EG1A-Z10DV](#) [HLMP-EL3B-WXKDD](#) [HLMP-HB74-UVBDD](#) [HLMP-HG65-VY0DD](#) [HLMP-HM74-34CDD](#) [HLMP-HM75-34CDD](#) [1L0532V23G0TD001](#) [NSPW500CS](#) [C4SMA-BGF-CQ34Q3C2](#) [L53GC13](#) [264-7SURTS530-A3](#) [L-C150JRCT](#) [S4SMS-BJF-CQ42QGF2](#) [S4SMS-GJF-CW12QMF2](#) [LD CQDP-1U3U-W5-1-K](#) [LO566UHR3-70G-A3](#) [SLA560WBD2PT3](#) [LP379PPG1C0G0300001](#) [SLR-322MCT32](#) [SLR-342DUT32](#) [SLR-342MC3F](#) [SLR343BC7TT32](#) [SLR343BCTT32](#) [SLX-LX3044GD](#) [SLX-LX3044ID](#) [SLX-LX3044YD](#) [1.90690.3330000](#) [SSL-LX20483ID](#) [SSL-LX3034YD](#) [SSL-LX5093LGT-11](#) [SSL-LX5093PGC](#) [SSL-LX5093SRC/F](#) [SSL-LX5093SYT](#) [SSL-LX509E3SIT](#) [SSL-LX509FT3ID](#) [SSL-LX50FT3GD](#) [SSS-LX4673ID-410B](#) [1L0532Y24I0TD001](#) [264-7SYGD/S530-E2](#)