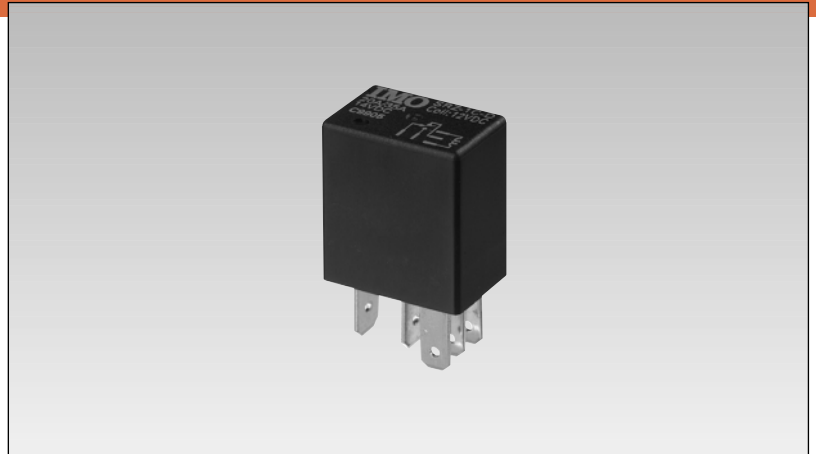
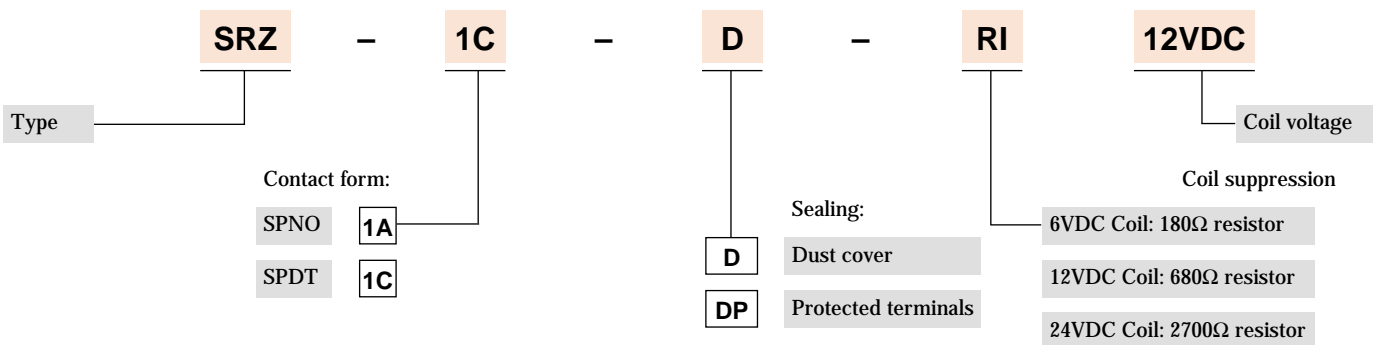


- 35A/14VDC rating
- Operating temperature 125°C
- Standardised design for plug-in quick connect terminals



Options and ordering codes



Contact rating

Contact form	1A (SPNO)	1C (SPDT)
Maximum switching power	490W	NO: 490W NC: 280W
Maximum switching voltage	30VDC	
Maximum switching/carry current	35A	NO: 35A NC: 20A

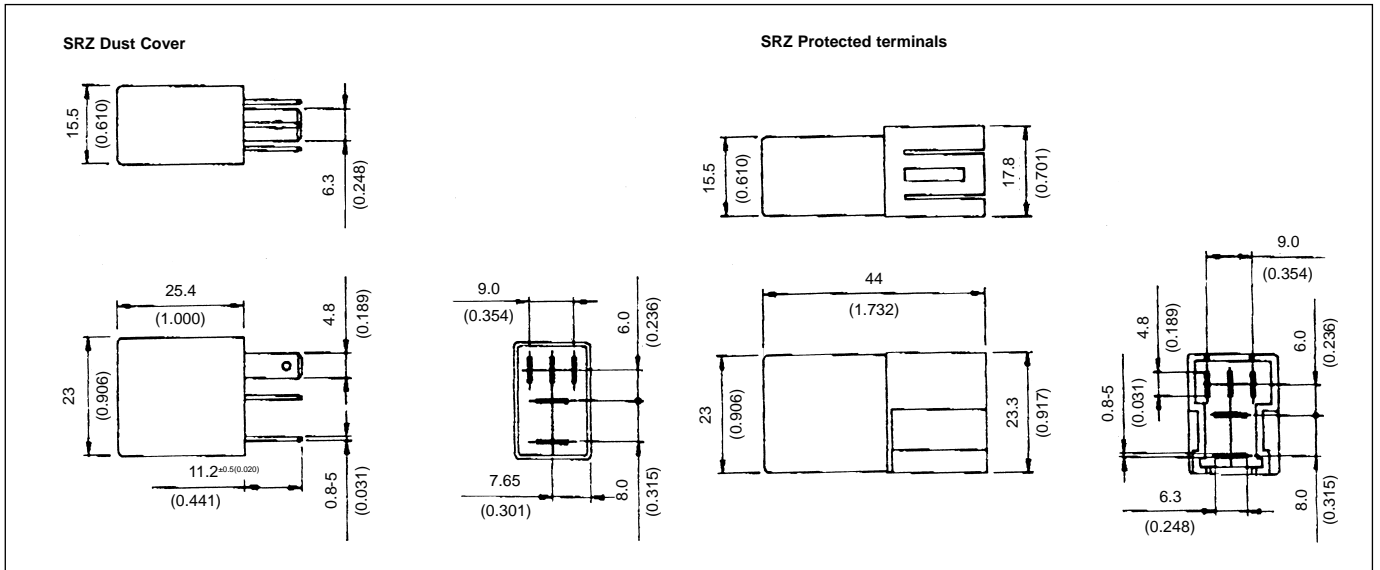
Specifications

Contact material	Special silver alloy	
Contact voltage drop	NO: 200mV maximum at 15A NC: 250mV maximum at 10A (initial value)	
Operate time	10ms maximum	
Release time	10ms maximum	
Nominal operating power	Approximately 1.2W	
Insulation resistance	20MΩ minimum (DC 500V)	
Breakdown voltage	Between coil and contacts	500VAC (for 1 minute)
	Between open contacts	500VAC (for 1 minute)
Vibration resistance	10-500Hz, 5.0G (operating)	
Shock resistance	10G (operating)	
Ambient temperature	-40~+125°C (storage -40~+155°C)	
Life expectancy	Mechanical	1 x 10 ⁷ operations (frequency 18,000 operations/hour)
	Electrical (at max load)	1 x 10 ⁵ operations (frequency 1,800 operations/hour)
Weight	20g	

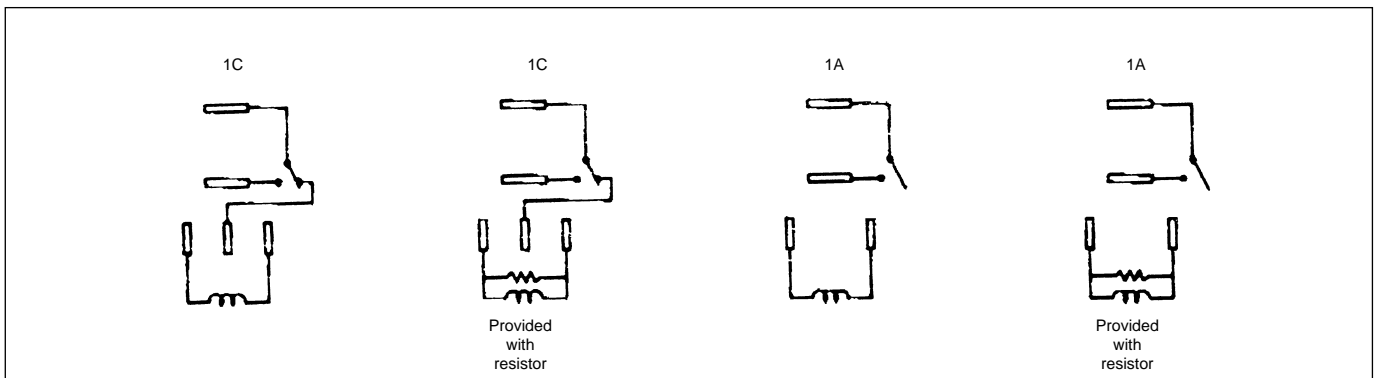
Coil specification

Rated voltage	Rated Current \pm 10% at 25°C (mA)	Coil Resistance \pm 10% at 25°C (Ω)	Max continuous voltage at 25°C	Pick up voltage (Max) at 25°C	Drop out voltage (Min) at 25°C	Power consumption at rated load
6	187.5	32	133% of rated voltage	60% of rated voltage	10% of rated voltage	Approx. 1.2W
12	97.5	123				
24	49.6	483				

Outline dimensions mm



Wiring diagram: bottom view



X-ON Electronics

Largest Supplier of Electrical and Electronic Components

Click to view similar products for imo manufacturer:

Other Similar products are found below :

[20.155MV/12-E](#) [MC14N-S-10110AC](#) [MB09-S-10=24](#) [DPS-1-030-24](#) [SRF-1C-SL-12VDC](#) [MB09-S-1024](#) [LDC18RRS](#) [SFSYE0111](#)
[21.1500M/6-E](#) [20.3304M/2-E](#) [21.910M/5-E](#) [20.95MA/2-E](#) [21.95MHF/2-E](#) [PE69-4032](#) [DPS-1-060-24](#) [CS20A-A2](#) [CS20A-U1](#) [VFC02](#)
[MSSTC11DA06](#) [20.95MHF/3-E](#) [B3T10](#) [XKL-040-21](#) [20.3304M/4-E](#) [SRDH-1A-SL-24VDC](#) [20.2500M/5-E](#) [21.155MH/12](#) [SRRHN-2CN-](#)
[SL-12VDC](#) [20.920M/5-E](#) [MC10N-S-10110AC](#) [21.1550MF/8-E](#) [20.910M/6-E](#) [20.95MH/3-E](#) [21.95MV/3](#) [MA05-S-01230AC](#) [SRRHN-2CN-](#)
[SL-5VDC](#) [LB69-4040](#) [20.3001M/6](#) [21.1500M/3-E](#) [SFSYE0311](#) [21.95MHF/6-E](#) [20.95MV/2-E](#) [20.155MV/4-E](#) [20.155MH/4-E](#) [20.950M/2-E](#)
[MT5 1-50-FAR](#) [BS3P3REDO](#) [MB12-S-10=24](#) [MA05-S-1024DC](#) [20.155MVF/8-E](#) [20.2500MV/8-E](#)