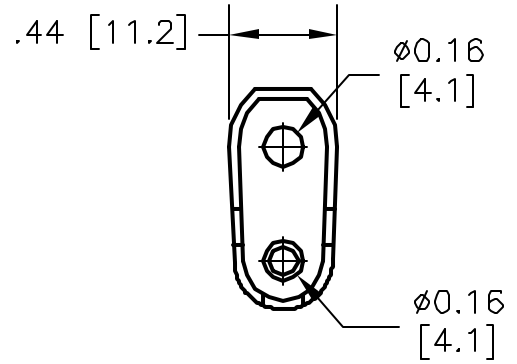
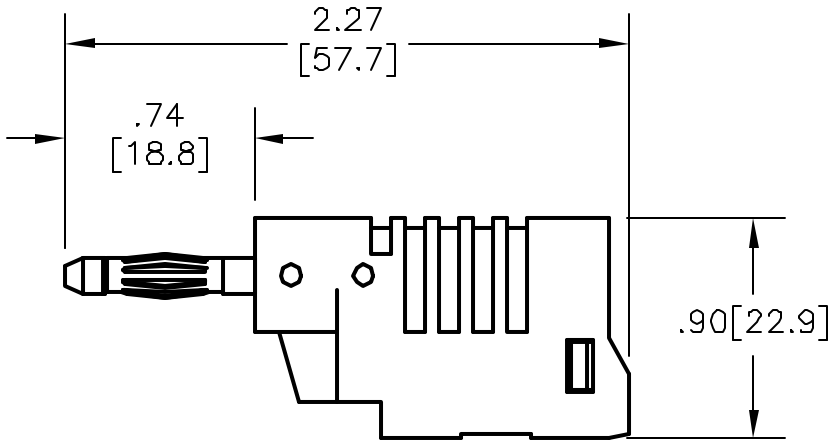
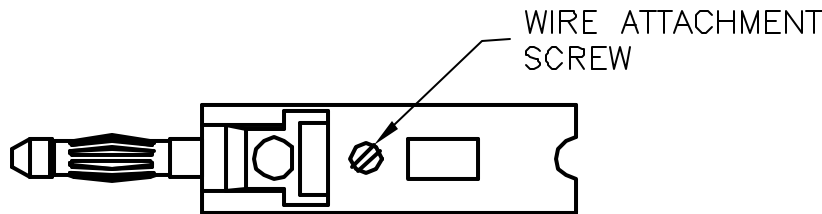


ALL RIGHTS RESERVED. NO PORTION OF THIS PUBLICATION, WHETHER IN WHOLE OR IN PART CAN BE REPRODUCED WITHOUT THE EXPRESS WRITTEN CONSENT OF SPC TECHNOLOGY.

REVISIONS			DOC. NO. SPC-F004 * Effective: 12/21/00 * DCP No: 680					
DCP #	REV	DESCRIPTION	DRAWN	DATE	CHECKD	DATE	APPRVD	DATE
170	A	RELEASED	HYD	1/19/00	JC	1/28/00	DJC	4/5/00



WIRE ACCESS HOLE



SPECIFICATIONS:

- DO-IT-YOURSELF, Ø4mm STACKING BANANA PLUG, SCREW ATTACHMENT.
- INSULATOR BODY: POLYACETAL
- PLUG BODY: BRASS, NICKEL PLATED
- CONTACT SPRING: BECU, NICKEL PLATED
- VOLTAGE: 500V
- CURRENT: 36A MAX.
- TEMPERATURE: -20°C TO +80°C
- CONDUCTOR: SIZE Ø.090 (12AWG)
- INSULATION: Ø.156
- STRIP LENGTH: .25 (6.4)

SPC-F004.DWG

DISCLAIMER:
ALL STATEMENTS AND TECHNICAL INFORMATION CONTAINED HEREIN ARE BASED UPON INFORMATION AND/OR TESTS WE BELIEVE TO BE ACCURATE AND RELIABLE. SINCE CONDITIONS OF USE ARE BEYOND OUR CONTROL, THE USER SHALL DETERMINE THE SUITABILITY OF THE PRODUCT FOR THE INTENDED USE AND ASSUME ALL RISK AND LIABILITY WHATSOEVER IN CONNECTION THEREWITH.



SPC TECHNOLOGY

Tolerances Unless Otherwise Specified Fractions ± 1/32 Decimals .XX ± .02 .XXX ± .005	DRAWN BY:	DATE:	DRAWING TITLE:		
	HISHAM QDISH	1/19/00	STACKING PLUG, SCREW ATTACHMENT, BLACK		
	CHECKED BY:	DATE:	SIZE	DWG. NO.	ELECTRONIC FILE
	JOHN COLE	1/28/00	A	SPC4379	92N4655.DWG
APPROVED BY:	DATE:	SCALE:		U.O.M.:	REV
DANIEL CAREY	4/5/00	NTS		INCHES [mm]	A
			SHEET:		1 OF 1

X-ON Electronics

Largest Supplier of Electrical and Electronic Components

Click to view similar products for [Test Sockets](#) category:

Click to view products by [Tenma](#) manufacturer:

Other Similar products are found below :

[AXS-5032-04-02](#) [AXS-3225-04-06](#) [AXS-7050-04-12](#) [5662](#) [BP30-10-B](#) [BP30GNN-1 PKG](#) [BP30-10Y-1 PKG](#) [AXS-7050-04-01](#) [AXS-5032-04-06](#) [AXS-2520-04-01](#) [AXS-5032-04-04](#) [930308101](#) [931714101](#) [15.0084-21](#) [563-0500](#) [20.1020-21](#) [20-313137](#) [20-313139](#) [20-313144](#) [20-313140](#) [20-313143](#) [22.1042](#) [+ 22.2370-22](#) [23.1010-23, 24, 25, 26, 27](#) [24.0160-1+25.0035](#) [24.0160-4+25.0035](#) [24.116-22](#) [5281](#) [5279](#) [450-3704-01-06-00](#) [AXS-3225-04-04](#) [AXS-3225-04-10](#) [AXS-7550-06-03](#) [AXS-7550-06-05](#) [269RB](#) [2713BB](#) [BP30BN-1 PKG](#) [BP30RN-1 PKG](#) [571-0200](#) [450-3422-01-06-00](#) [450-3888-01-04-00](#) [BP30GP10](#) [571-0400](#) [571-0600](#) [66.9131-23](#) [66.9427-22](#) [BP21-2BRN-B PKG](#) [930058104](#) [930103102](#) [930103188](#) [930103700](#)