

LIQUID LEVEL SENSORS

Grangestone Industrial Estate
Girvan, Ayrshire KA26 9PS
United Kingdom

Telephone: +44 1465 713581
Fax: +44 1465 714974

E-Mail: info@gentechsensors.com
Web Site www.gentechsensors.com

VS Series – Vertical Liquid Level Sensor

VS303-51N

Design Features

- High or low level sensing
- Internal & External Fitting Components
- Reed Switch reliability
- Nitrile sealing components
- Easy installation



Product Comments

- UL listed model, File E98428
- Normally open or normally closed by float reversal
- Suitable for a wide range of liquids
- Top or Bottom Tank Entry Vertical Stem / Float Travel
- Nylon 6.6 Materials

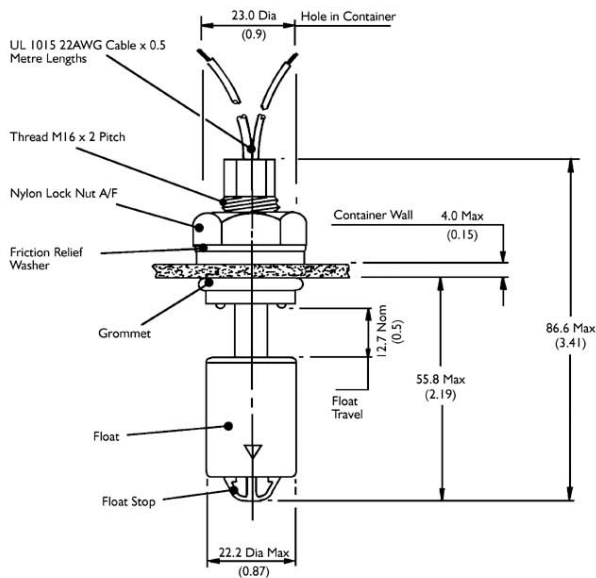
Typical Applications

- Fuel Low or High Level Sensing
- Chemical High or Low Level
- Sump Level
- Cooking Oil
- Alcohols

Material, Design and Operation

Mounting:	Top & Bottom
Material:	Nylon 6.6
Fitting	Internal & External Fitting options
Contact Form:	Form A– SPST
Contact Material:	Ruthenium
Maximum Switching Volts:	250VAC
Maximum Switching Current:	1.0
Maximum Power:	15 Watts
Housing Temperature Range °C:	110
Housing Material:	Glass Filled Nylon 6.6
Housing Colour:	Blue
Float Material:	Glass Filled Nylon 6.6
Connection Type:	Stripped Cables
Cable Type:	2 x 22AWG 16/0.2mm PVC insulated 0.5m long to UL/CSA/BS6361
Cable Colour:	Black/Black
Minimum Specific Gravity:	0.85
Operating Temperature Range °C:	110
Operating Pressure BAR:	4
Sealing Components:	Nitrile
Mounting Shock:	50g for 11ms duration
Mounting Vibration:	35g up to 500Hz
Operate Mode:	N/C with float down
Approvals:	UL

Line Drawing



EXTERNAL FITTING

CONTAINER WALL
(THICKNESS MAX 4mm, MIN 1mm)

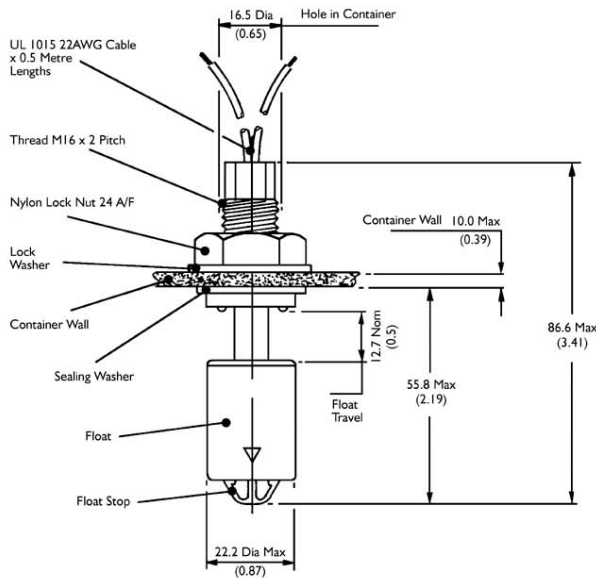
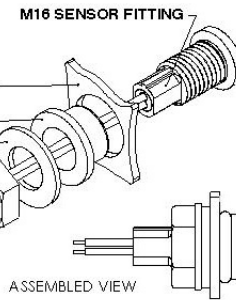
NOTE! DRILL 0.9" OR 23mm HOLE,
ENSURE FREE FROM SWarf AND
SHARP EDGES.

SEALING GROMMET

FRICTION RELIEF
WASHER

FIXING NUT

NOTE! MAX TORQUE 2lbs/ft
OR 2.67Nm.



INTERNAL FITTING

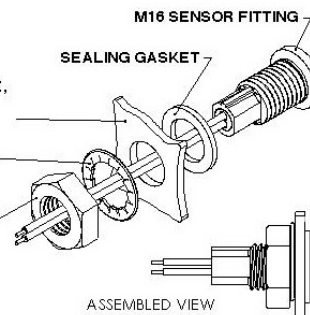
CONTAINER WALL
(THICKNESS MAX 10mm, MIN 1mm)

NOTE! DRILL 0.65" OR 16.5mm HOLE,
ENSURE FREE FROM SWarf AND
SHARP EDGES.

LOCK WASHER

FIXING NUT

NOTE! MAX TORQUE 3lbs/ft
OR 4Nm.



X-ON Electronics

Largest Supplier of Electrical and Electronic Components

Click to view similar products for [Liquid Level Sensors](#) category:

Click to view products by [Gentech](#) manufacturer:

Other Similar products are found below :

[F03-16PT-1M](#) [FSH-21](#) [FSH-25](#) [FSH-34](#) [FSH-35](#) [FSV-31](#) [FSV-35](#) [LRNH31S41](#) [FSH-31](#) [RSF14Y100RF](#) [F03-16PT-10M](#) [LL01-1AB01](#)
[F03-16PS-F](#) [F03-16SF-5M](#) [F03-16PE-5M](#) [F03-16PT-5M](#) [K7L-U](#) [LBFS 1151](#) [LL8951T5](#) [SCN-1518SC](#) [LL103000](#) [LRNR31N01](#) [K7L-](#)
[AT50DB](#) [F03-16PT-2M](#) [RSF107H100GV](#) [MS03-PP](#) [KSL-100-1](#) [LS01-1A66-PP-2000W](#) [LS01-1B66-PP-500W](#) [LS02-1B66-S-500W](#) [LS02-](#)
[1B85-PP-5000W](#) [LS03-1A85-PP-500W](#) [LS03/DL-1A85-PA-500W](#) [RSF26H050TG](#) [EL-3N](#) [LL01-1AA01](#) [LRNH31S42](#) [MS10C](#)
[SSH66XE34N100](#) [SSH66TE34N100S](#) [TSF76H100DN](#) [TSF76H050TV](#) [OLS500D3L](#) [RSF88Y100R](#) [RSF76Y100RN](#) [RSF54Y100RC](#)
[RSF53Y100RC](#) [OLS200D3LSH](#) [OLS500D3](#) [OLS700D3LSH](#)