

QMSS-026-06.75-L-D-A

QMSS-052-06.75-L-D-A

**QMSS SERIES**

**(0.635 mm) .025"**

# SHIELDED GROUND PLANE HEADER

## SPECIFICATIONS

For complete specifications and recommended PCB layouts see [www.samtec.com?QMSS](http://www.samtec.com?QMSS)

**Insulator Material:** Liquid Crystal Polymer  
**Terminal, Ground Plane & Shield Material:** Phosphor Bronze  
**Plating:** Au over 50µ" (1.27 µm) Ni (Tin on Ground Plane Tail)

**Voltage Rating:** 300 VAC mated with QFSS  
**Operating Temp:** -55°C to +125°C  
**RoHS Compliant:** Yes

**Processing:** Lead-Free Solderable: Yes  
**SMT Lead Coplanarity:** (0.10 mm) .004" max (026-078)  
**Board Stacking:** For applications requiring more than two connectors per board, contact [ipg@samtec.com](mailto:ipg@samtec.com)

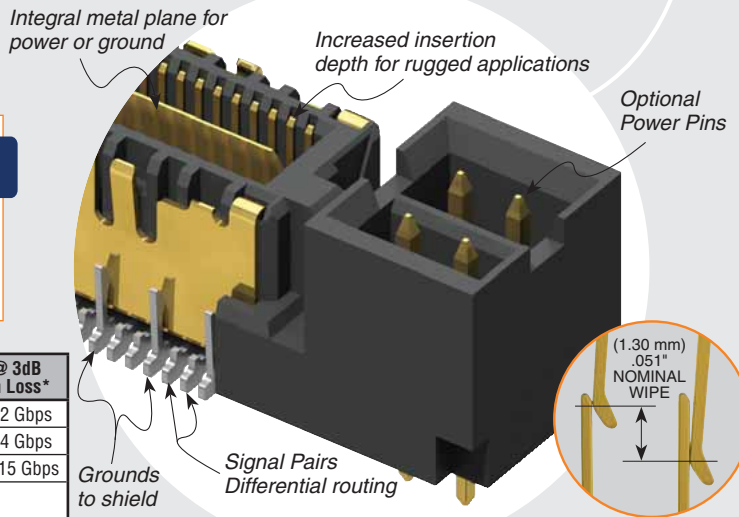
**Board Mates:** QFSS

**RUGGEDIZED**  
BY SAMTEC

- Increased insertion depth
- Integral guide post

QMSS/QFSS 11 mm Stack Height	Type	Rated @ 3dB Insertion Loss*
Single-Ended Signaling	-D	6 GHz / 12 Gbps
Differential Pair Signaling	-D	7 GHz / 14 Gbps
Differential Pair Signaling	-D-DP	7.5 GHz / 15 Gbps

\*Performance data includes effects of a non-optimized PCB.  
 Performance data for other stack heights and complete test data available at [www.samtec.com?QMSS](http://www.samtec.com?QMSS) or contact [sig@samtec.com](mailto:sig@samtec.com)



## RECOGNITIONS

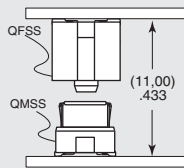
For complete scope of recognitions see [www.samtec.com/quality](http://www.samtec.com/quality)



## ALSO AVAILABLE (MOQ Required)

- Headers without Alignment Pins
- 8 Power Pins/End
- 4 or 8 Power Pins/End for (2.36 mm) .093" thick board
- Guide Post
- Edge Mount
- 64 (-DP) and 104 pins per row Contact Samtec.

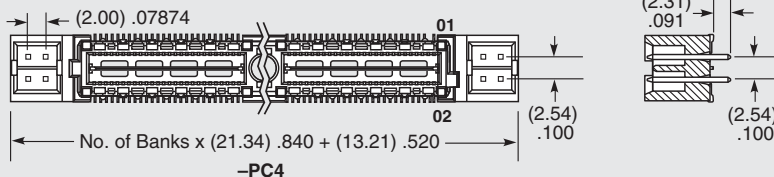
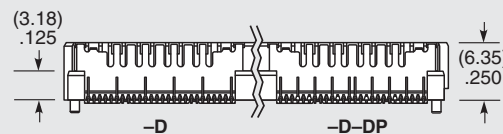
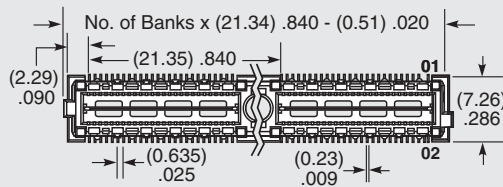
## APPLICATION



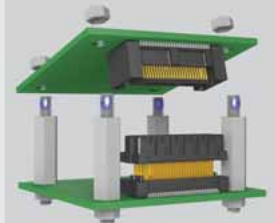
**Note:** Patented

**Note:** Some lengths, styles and options are non-standard, non-returnable.

<b>QMSS</b>	<b>PINS PER ROW NO. OF PAIRS</b>	<b>06.75</b>	<b>PLATING OPTION</b>	<b>TYPE</b>	<b>A</b>	<b>OTHER OPTION</b>
	<p><b>-026, -052, -078</b> (52 total pins per bank 40 signals + 12 grounds to shield = -D)</p> <p><b>-016, -032, -048</b> (16 pairs per bank = -D-DP)</p>		<p><b>-L</b> = 10µ" (0.25 µm) Gold on Signal Pins, Shield and Ground Plane (Tin on Signal Pin tails, and Ground Plane tails)</p>	<p><b>-D</b> = Single-Ended</p> <p><b>-D-DP</b> = Differential Pair</p>		<p><b>-K</b> = (5.50 mm) .217" DIA Polyimide film Pick &amp; Place Pad (N/A with -PC4)</p> <p><b>-PC4</b> = 4 Power Pins/End (N/A with -A)</p>



## OTHER SOLUTIONS



See SO Series for precision machined standoffs.

## X-ON Electronics

Largest Supplier of Electrical and Electronic Components

*Click to view similar products for [Headers & Wire Housings](#) category:*

*Click to view products by [Samtec](#) manufacturer:*

Other Similar products are found below :

[95000-104TRLF](#) [10135584-644402LF](#) [DF62W-EP2022PCA](#) [95000-106TRLF](#) [DF62W-2022SCA](#) [DF62W-EP2022PC](#) [2203348](#) [DF62W-2022SC](#) [1084018](#) [1029039](#) [1084017](#) [802-10-012-10-002000](#) [1112640](#) [1112639](#) [891-007-9SS-BST1T](#) [000-34000](#) [0008550134](#) [0009482033](#) [0009507031](#) [57102-F02-18ULF](#) [57102-S06-03LF](#) [57202-S52-04LF](#) [PCN6-15S-2.5E](#) [0039019024](#) [58102-G61-06LF](#) [582553-1](#) [0009485154](#) [0009508121](#) [0022285053](#) [0050291907](#) [018731A](#) [LY20-4P-DT1-P1E-BR](#) [02.125.8002.8](#) [60101931](#) [60598-1 \(Cut Strip\)](#) [M1625-3R/100](#) [61062-3](#) [61082-181009](#) [CSU011177004](#) [636-1427](#) [638009-1](#) [641938-9](#) [641991-4](#) [644168-1](#) [644827-2](#) [647662-1](#) [65039-019ELF](#) [65692-001LF](#) [65781-018](#) [65781-047](#)