

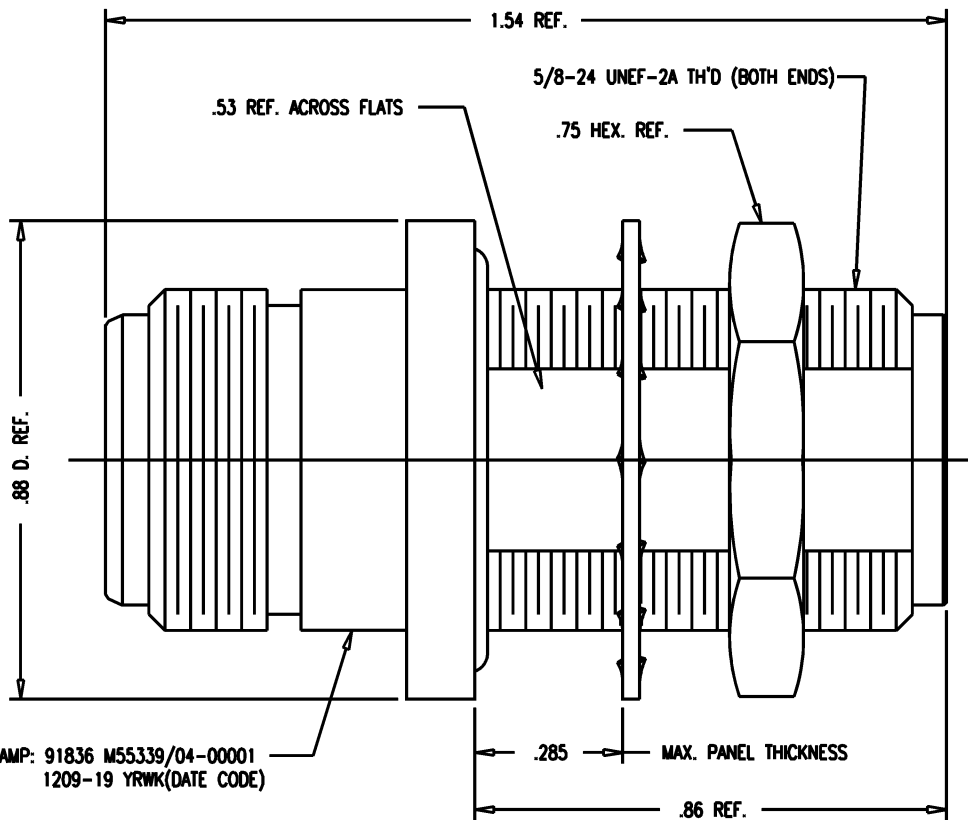
DASH NO.	M CODE	MADE FROM
----------	--------	-----------

GSD

M55339/04-00001

REVISIONS

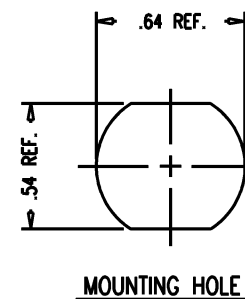
ISSUE	CHANGES	
4	CN KH	32393 A 07/31/90
5	CN KH	35618 D 01/09/95
6	CN JW	37573 C 03/17/98



STAMP: 91836 M55339/04-00001
1209-19 YRWR(DATE CODE)

NOTES:

- INTERFACES PER MIL-STD-348, FIG. 3042.
- MATERIALS:
INSULATORS-TEFLON, ASTM-D-1457
O-RINGS-SILICONE RUBBER, ZZ-R-765
LOCKWASHER-PHOSPHOR BRONZE, QQ-B-750
CENTER CONTACT-BER. COP., ASTM-B-196
ALL OTHER METAL PARTS-BRASS, QQ-B-626
- FINISHES:
CENTER CONTACTS-GOLD PLATE PER MIL-G-45204
ALL OTHER METAL PARTS-SILVER PLATE PER QQ-S-365
- ELECTRIAL CHARACTERISTICS:
NOMINAL IMPEDANCE-50 OHMS
FREQUENCY RANGE-DC TO 11 GHZ
WORKING VOLTAGE-1000 VRMS



MOUNTING HOLE

120919S

SCALE 4:1

APPROX SURFACE AREA

1209-19

USED ON

REF:

**N BULKHEAD ADAPTER
PRESSURIZED (F-F)**

DRAWN KH DATE 07/31/90

DESIGN AT DATE 08/01/90

APPR. DATE

KINGS
ELECTRONICS CO., INC.
TUCKAHOE, NEW YORK 10707

M55339/04-00001

GSD

X-ON Electronics

Largest Supplier of Electrical and Electronic Components

Click to view similar products for [RF Connectors / Coaxial Connectors](#) category:

Click to view products by [Winchester](#) manufacturer:

Other Similar products are found below :

[R125315120](#) [8915-1511-000](#) [89674-0827](#) [5916-1103-603](#) [0106-001-000](#) [6-0001-3](#) [6001-7071-019](#) [6002-7051-003](#) [6002-7551-202](#) [6059674-1](#) [619550-1](#) [630059-000](#) [M39012/25-0021](#) [M39012/79-3008](#) [M39030/3-01N](#) [M39030/3-03N](#) [M3933/25-29N](#) [M3933/25-36N](#) [6500-7071-046](#) [6501-1071-002](#) [M83723/72W24576](#) [M83723/72W2457N](#) [6769](#) [CX050L2AQ](#) [7002-1541-010](#) [7003-1572-002](#) [7004-1512-000](#) [7009-1511-004](#) [7010-1511-000](#) [7029-1511-060](#) [7101-1541-010](#) [7101-1571-002](#) [7105-1521-002](#) [7145-1521-002](#) [7209-1511-011](#) [7210-1511-012](#) [7210-1511-015](#) [7210-1511-019](#) [7210-1511-040](#) [7225-1512-050](#) [7242-1511-000](#) [73137-5015](#) [73216-2241](#) [73251-0111](#) [73251-0672](#) [73276-1501](#) [73366-0013](#) [73404-2300](#) [73413-6080](#) [734151610](#)