

# D-FUSES, 500 V

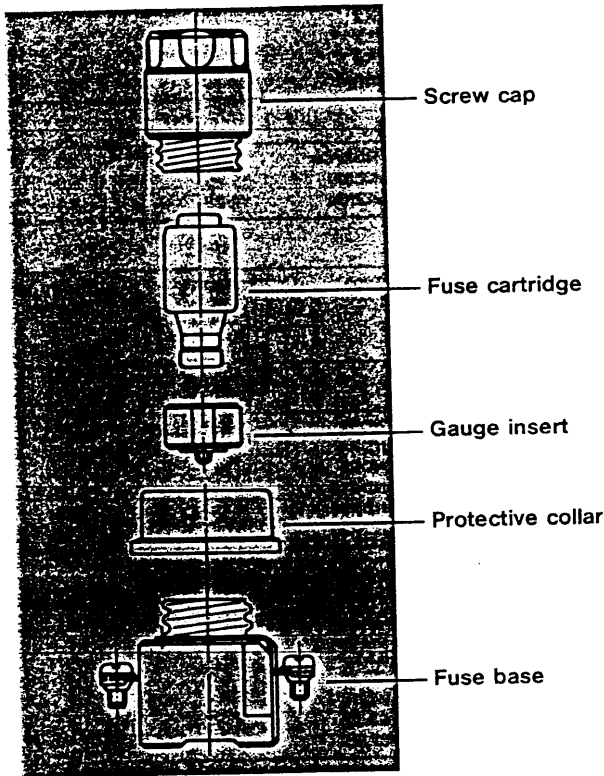
VDE 0635 and VDE 0636

170-436 → 445

The D-fuse system comprises: fuse base, gauge insert, fuse cartridge, and screw cap. It is rated for voltages up to 500 V.

Gradation of the diameter of the fuse cartridge pedestal-contact, in conjunction with correspondingly determined diameters for the gauge insert, for each rating stage, ensure that (above 6 A), no fuse can be inserted in the wrong base.

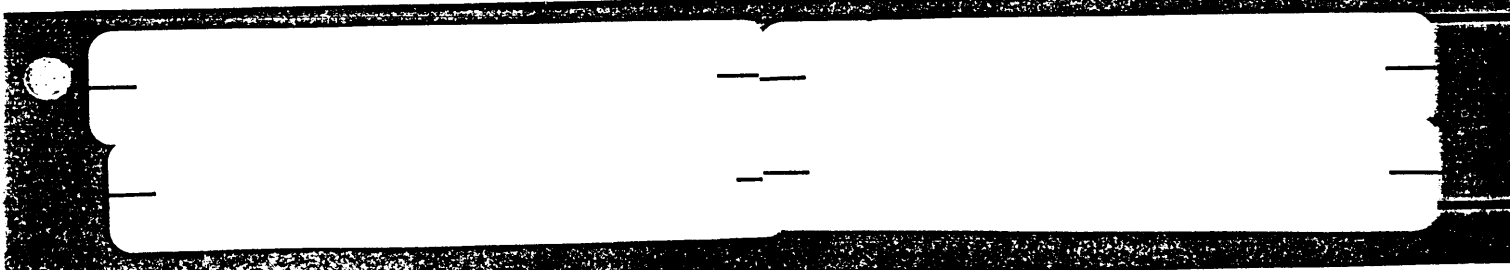
Operating class: gF (fast) to VDE 0635  
 Operating class: gL (slow) to VDE 0636  
 Operating class: gT (slow) to VDE 0635

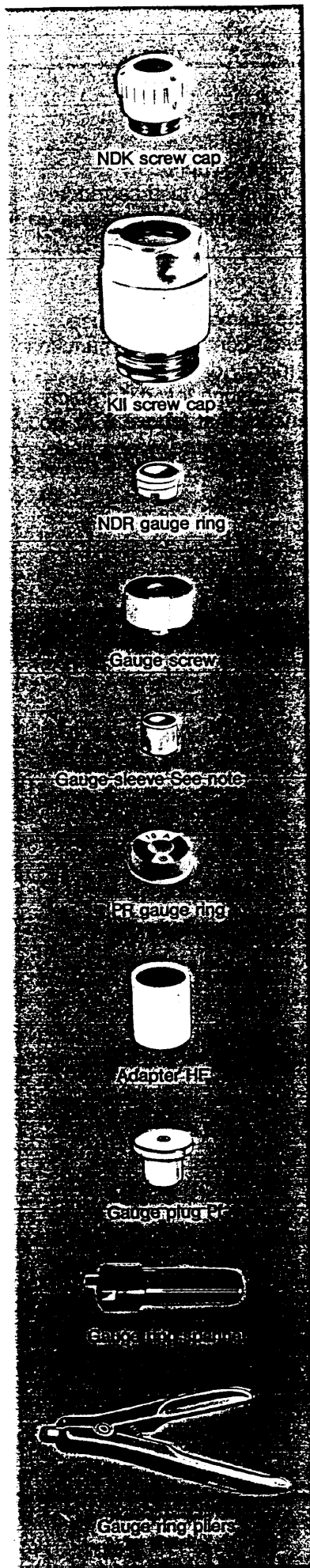


## D fuse cartridges to DIN 49360 and DIN 49515

Size	Rated current	Thread	Type		Pack qty.	Weight 100 off, nett kg	Total length		ø
			Operating class				a	b	
	A		gF	gL/gT					
NDz	0,5	E 16	gFNDz/0,5	gTNDz/0,5	25	1,3	50	12,8	
	1		gFNDz/1	gTNDz/1		1,3			
	2		gFNDz/2	gTNDz/2		1,3			
	4		gFNDz/4	gTNDz/4		1,3			
	6		gFNDz/6	gTNDz/6		1,3			
	10		gFNDz/10	gTNDz/10		1,3			
	16		gFNDz/16	gTNDz/16		1,4			
	20		gFNDz/20	gTNDz/20		1,6			
	25		gFNDz/25	gTNDz/25		1,7			
	DII		0,5	E 27		gFD2/0,5			gLD2/0,5
1		gFD2/1	gLD2/1		2,7				
2		gFD2/2	gLD2/2		2,7				
4		gFD2/4	gLD2/4		2,7				
6		gFD2/6	gLD2/6		2,7				
10		gFD2/10	gLD2/10		3,2				
10/6 <sup>1)</sup>		gFD2/10/6	gLD2/10/6		3,2				
16		gFD2/16	gLD2/16		3,2				
20		gFD2/20	gLD2/20		3,2				
25		gFD2/25	gLD2/25		3,6				
DIII	35	E 33	gFD3/35	gLD3/35	5	5,6	50	28	
	50		gFD3/50	gLD3/50		6,2			
	63		gFD3/63	gLD3/63		6,4			
DIVH	80	R 1 1/4"	gFD4/80	gLD4/80	10	13,4	57,5	33,5	
	100		gFD4/100	gLD4/100		13,4			
DVH	125	R 2"	gFD5/125	gTD5/125	10	23,2	57,5	46	
	160		gFD5/160	gTD5/160		24,2			
	200		gFD5/200	gTD5/200		34,8			

<sup>1)</sup> 10 A fuse cartridge with 6 A pedestal contact - without VDE mark.





### D screw caps to DIN 49 514 und DIN 49 360

Size	Rated current	Thread	Test hole	Type	Pack qty.	Weight per hundred approx. kg
A						

#### Thread; nickel plated brass

NDz	25	E 16	without	NDK	25	2,3
DII	25	E 27	with	K2	25	5,0
DIII	63	E 33	with	K3	25	8,4
DIVH	100	R 1 1/4"	without	K4	10	21,0
DVH	200	R 2"	without	K5	10	34,0

#### Thread; silver plated copper

NDz	25	E 16	without	NDK/Cu	25	2,3
DII	25	E 27	with	K2/Cu	25	5,0
DIII	63	E 33	with	K3/Cu	25	8,4

### D gauge inserts to DIN 49 360 und DIN 49 516

Size	For fuse cartridge	Fuse base thread	Type	Pack qty.	Weight per hundred approx. kg
A					

#### Gauge rings

NDz	2	E 16	NDR2	50	0,28
	4		NDR4		0,28
	6		NDR6		0,28
	10		NDR10		0,28
	20		NDR16		0,28
	20		NDR20		0,11

#### Gauge screws

DII	2	E 27	S2/2	25	1,3
	4		S2/4		1,3
	6		S2/6		1,3
	10		S2/10		1,3
	16		S2/16		1,3
	20		S2/20		1,2
DIII	25	S2/25	1,2		
	35	E 33	S3/35	25	2,1
	50		S3/50		1,9
	63		S3/63		1,7

#### Gauge Sleeve

DIVH	80	R 1 1/4"	H4/80	50	0,5
	100		H4/100		0,5
DVH	125	R 2"	H5/125	50	0,6
	160		H5/160		0,6
	200		H5/200		0,5

### D gauge rings to DIN 49 362 for fuse bases without gauge screws

DII	6	E 27	PR2/6	50	0,40
	10		PR2/10		
	16		PR2/16		
	20		PR2/20		
DIII	35	E 33	PR3/35	50	0,43
	50		PR3/50		

Adapters are necessary when the cartridge being used is of a lower rating than the fuse base.

Size	For fuse cartridge	In screw cap	Thread	Type	Pack qty.	Weight per hundred approx. kg
NDz	NDz	KII	E 27	HFZ	100	1,65
DII	DII	KIII	E 33	HF2	100	1,55
DIII	DIII	KIV	R 1 1/4"	HF3	100	1,90
DIVH	DIVH	KV	R 2"	HF4	100	

#### Gauge plug - for fitting DIII fuses (35-63 A) in DIVH fuse bases

-			R 1 1/4"	PF	1	2,5
---	--	--	----------	----	---	-----

#### Gauge ring spanner

-				PSS	1	4,4
---	--	--	--	-----	---	-----

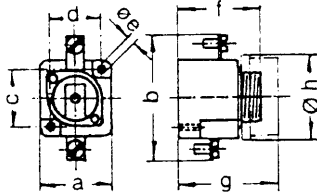
#### Gauge ring pliers

-				PRZ	1	3,5
---	--	--	--	-----	---	-----

**D fuse bases to DIN 49 510, 49 511 and 49 325**  
**D single-pole flush-mounting fuse bases, for separate mounting**

Size	Rated current	Thread	Type of terminal	Shroud	Type	Pack qty.	Weight % approx. kg
A							
NDz	25	E 16	Screw tab	without	<b>NEZ 25</b>	20	5,4
NDz	25	E 16	Screw tab	with	<b>NEZ 25R</b>	20	6,4
DII	25	E 27	Screw tab	without	<b>EZ 25</b>	12	7,8
DII	25	E 27	Screw tab	with	<b>EZ 25R</b>	12	8,8
DIII	63	E 33	Screw tab	without	<b>EZ 60</b>	10	15,4
DIII	63	E 33	Screw tab	with	<b>EZ 60R</b>	10	18,0
DIVH	100	R 1 1/4"	Screw tab	without	<b>EZ 100</b>	6	32,8
DIVH	100	R 1 1/4"	Screw tab	with	<b>EZ 100R</b>	6	34,8
DVH	200	R 2"	Screw tab	without	<b>EZ 200</b>	4	62,2
DVH	200	R 2"	Screw tab	with	<b>EZ 200R</b>	4	74,6

**Dimensions in mm**

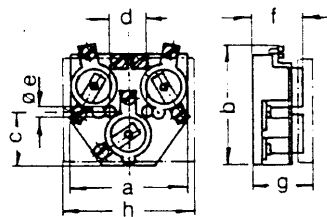


	a	b	c	d	∅e	f	g	∅h
NEZ R	33	56	25	25	4,5	44	52,5	33
EZ 25R	37,5	66	30	27	5,6	44	52,5	46
EZ 60R	46	82	35,5	35,5	5,5	47	55	54,5
EZ 100R	62	105	47	47	6	60	68	71
EZ 200R	81	135	65	65	8	62	74	96

**D three-pole flush mounting fuse bases, with neutral terminal**

NDz	25	E 16	Screw tab	without	<b>NEZ 25/3</b>	2	32,6
NDz	25	E 16	Screw tab	with	<b>NEZ 25/3/A</b>	2	33,8
DII	25	E 27	Screw tab	without	<b>EZ 25/3</b>	8	31,6
DII	25	E 27	Screw tab	with	<b>EZ 25/3/A</b>	8	37
DIII	63	E 33	Screw tab	without	<b>EZ 60/3</b>	8	48
DIII	63	E 33	Screw tab	with	<b>EZ 60/3/A</b>	8	54,4

**Dimensions in mm**

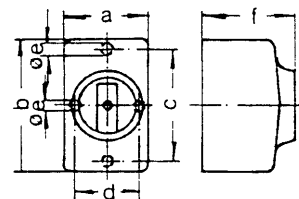


	a	b	c	d	∅e	f	g	h
NEZ 25/3/A	64	90	30	39	4,5	48	54	68
EZ 25/3/A	94	94	44	32	5	44	52	94
EZ 60/3/A	102	106	45,5	32	5	44	52	113

**D single-pole universal fuse bases**

NDz	25	E 16	Screw tab	with	<b>NUZ 25</b>	10	19,4
DII	25	E 27	Screw tab	with	<b>UZ 25</b>	10	17,8
DIII	63	E 33	Screw tab	with	<b>UZ 60</b>	8	38,2

**Dimensions in mm**

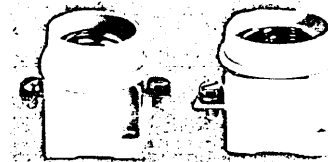


	a	b	c	d	∅e	f
NUZ 25	45	71	61	-	4	50
UZ 25	41	73	-	33	5	50
UZ 60	65	100	-	48	5	63

**D single and triple-pole surface mounting fuse bases**

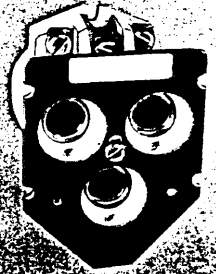
Size	Rated current	Thread	Type of terminal	Gauge fitting	Transp. shroud	Type	Pack qty.	Weight % approx. kg
A								
DII	1x25	E 27	Screw tab	gauge screw	with	<b>S 27-1/h/p</b>	10	7,6
DII	1x25	E 27	Screw tab	gauge ring	with	<b>S 27-1/h</b>	10	7,6
DIII	1x63	E 33	Screw tab	gauge screw	without *	<b>S 33-1/p</b>	10	12,2
DIII	1x63	E 33	Screw tab	gauge ring	without *	<b>S 33-1</b>	10	12,2
DII	3x25	E 27	Screw tab	gauge screw	with	<b>S 27/p</b>	4	28,2
DII	3x25	E 27	Screw tab	gauge ring	with	<b>S 27</b>	4	28,2
DIII	3x63	E 33	Screw tab	gauge screw	with	<b>S 33/p</b>	4	44,2
DIII	3x63	E 33	Screw tab	gauge ring	with	<b>S 33</b>	4	44,2

\* Available with protective collar, dimensions: see back page

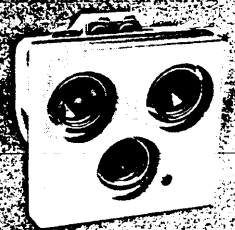


EZ 25 R

EZ 100 R



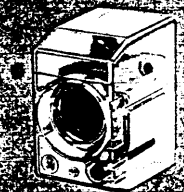
NEZ 25/3/A



EZ 25/3/A



UZ 25



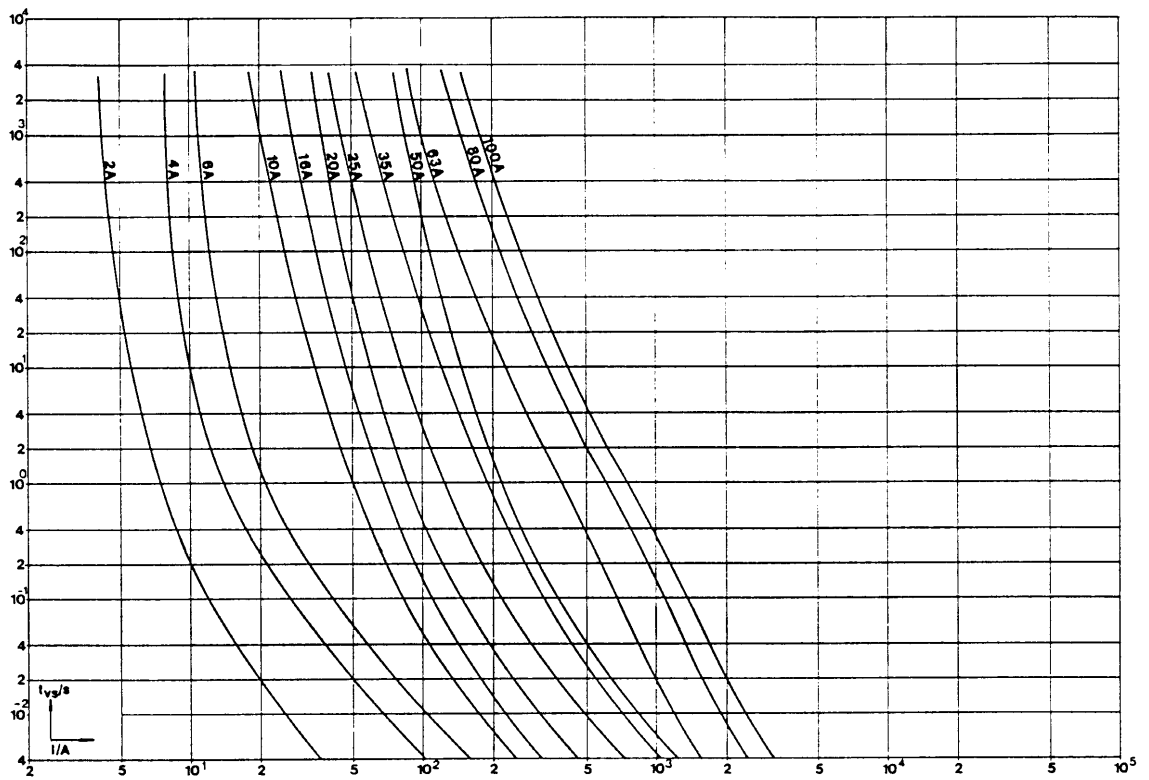
S 27-1/h



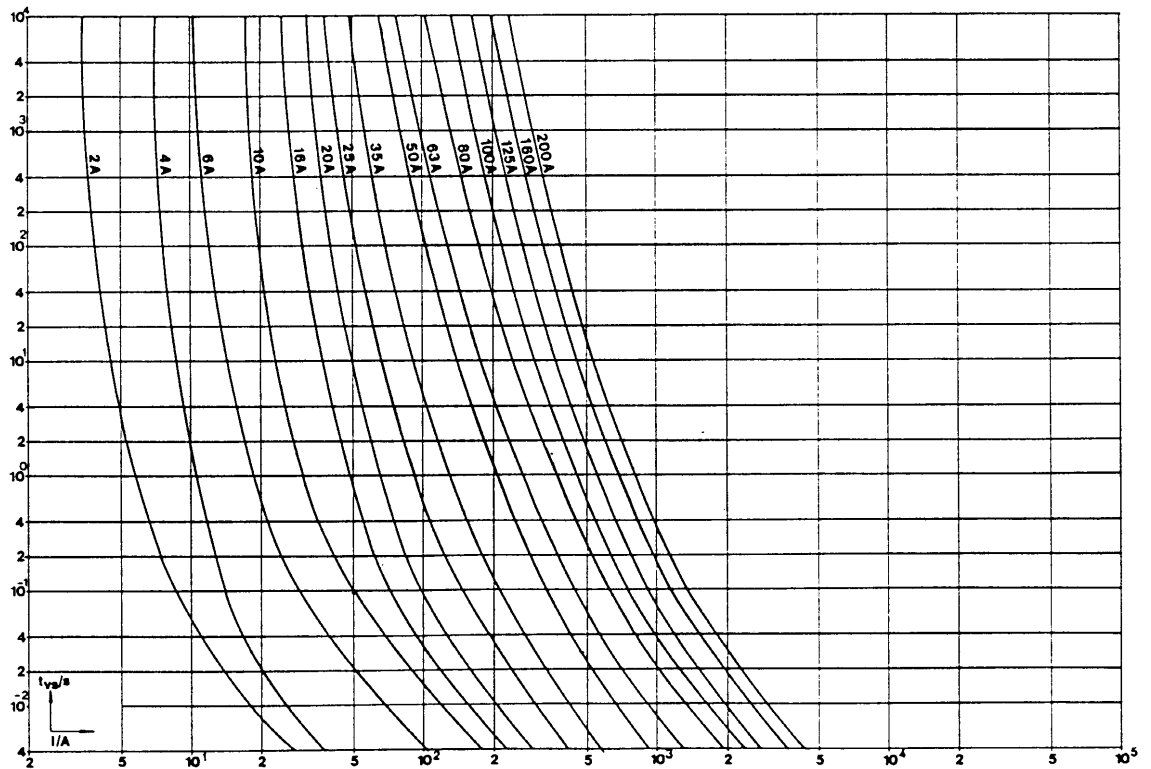
S 33

## Technical data

Time/current characteristics (tolerance;  $\pm 5\%$  in direction of current flow)  
D fuse cartridges, 500 V (operating class gL)



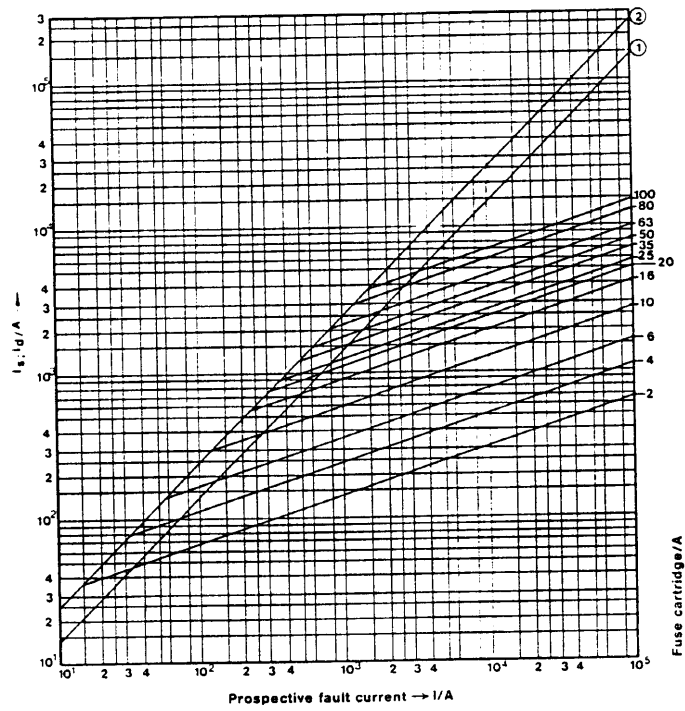
D fuse cartridges, 500 V (fast)



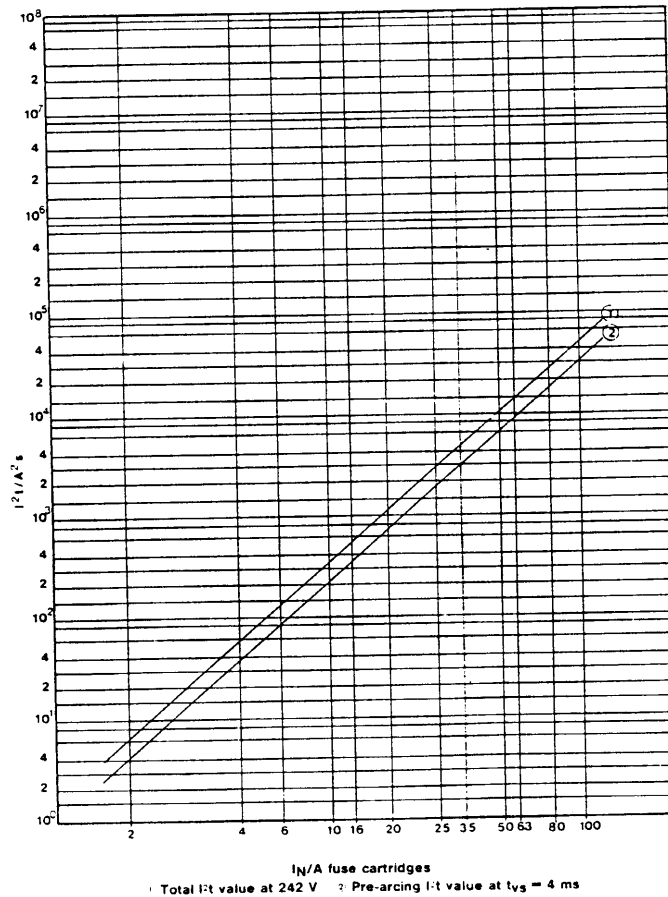
Further technical data on "fast characteristic" D fuse cartridges 500 V, on request.

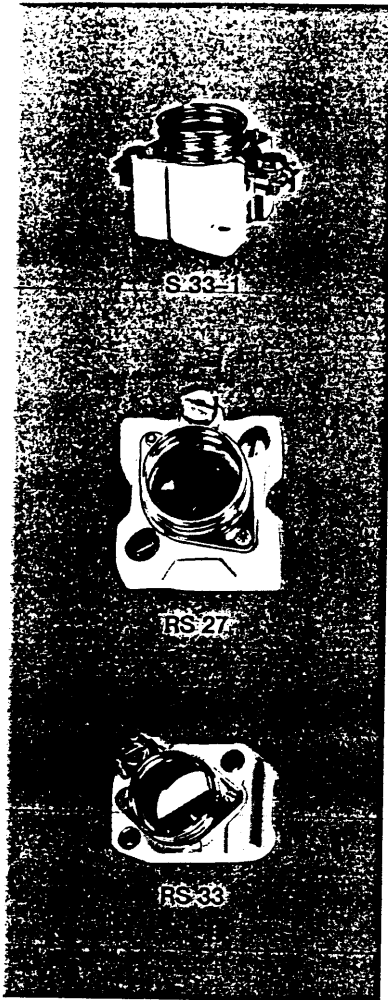
## Cut-off characteristics D fuse cartridges 500 V (operating class gL)

- 1 Peak asymmetrical short-circuit current without d.c. aperiodic component
- 2 Peak asymmetrical short-circuit current with largest d.c. aperiodic component



## $I^2t$ values D fuse cartridges 500 V (operating class gL)



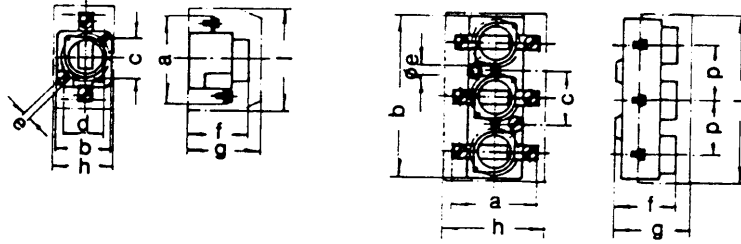


Dimensions in mm

D surface mounting fuse bases

single-pole

three-pole

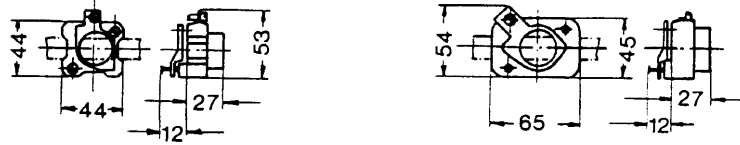


	a	b	c	d	e	f	g	h	i	p
S 27-1/h/p	58	37	30	27	4,5	45	53	43	74	-
S 33-1/p	79	45	34	34	4,5	45	53	-	∅55	-
S 27/p	58	117	41	-	4,5	45	53	76	123	41
S 33/p	79	144	50	-	4,5	45	53	97	150	50

D busbar mounting fuse bases  
for multiple fitting on busbars

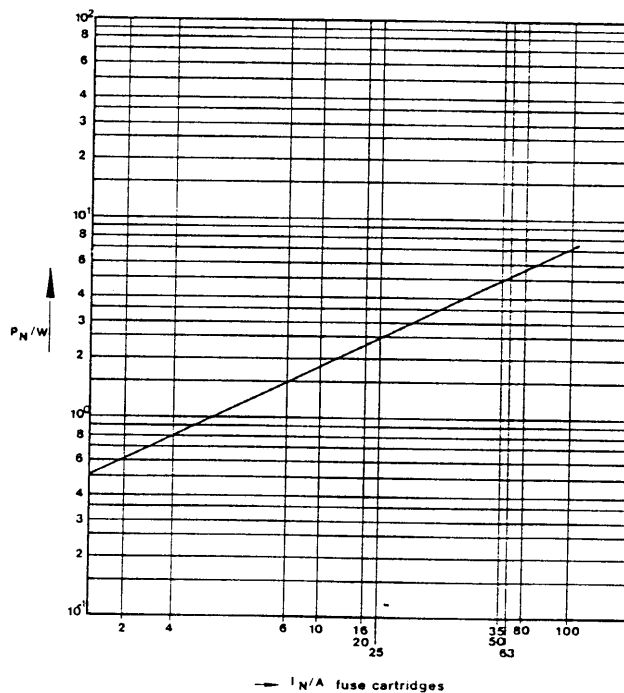
Size	Rated current	Thread	Terminal	Gauge fitting	Busbar size	Type	Pack qty.	Weight per hundred approx. kg
A								
DII	25	E 27	Screw tab	Gauge ring	16x4	RS 27 - 1x4	10	8
DII	25	E 27	Screw tab	Gauge ring	16x8	RS 27 - 1x8	10	8
DIII	63	E 33	Screw tab	Gauge ring	16x4	RS 33 - 1x4	2	10,2
DIII	63	E 33	Screw tab	Gauge ring	16x8	RS 33 - 1x8	2	10,2

Dimensions in mm



Power losses

D fuses 500 V (operating class gL)



## X-ON Electronics

Largest Supplier of Electrical and Electronic Components

*Click to view similar products for [eaton](#) manufacturer:*

Other Similar products are found below :

[BK-MDL-3-R](#) [BK1-S506-500-R](#) [BK1-S506-6-3-R](#) [BK1-S506-2-R](#) [MPI4040R4-1R5-R](#) [TDC600-10A](#) [89096-015](#) [8946K153](#) [8961K155](#)  
[M22-D-R-GB0/K11](#) [M22-L-R/R](#) [M22S-ST-GB12](#) [630NHG3B](#) [63ET](#) [6422](#) [6580](#) [CTX20-16-52LP-R](#) [CWL530FI](#) [CXM/CO/GP/R/BB](#)  
[6HD36](#) [714125](#) [MBO-2](#) [ESR5-NO-41-24VAC-DC](#) [7314K36](#) [7321K2](#) [F02A-1-1/2A](#) [F02A-1-1/2AS](#) [F02A-1AS](#) [F02A-2AS](#) [F02A-3/4A](#)  
[F03A250V12A](#) [F03B125V4A](#) [MCR-4](#) [MDA-2-8/10-R](#) [MDA-30A](#) [MDA-V-1/16](#) [F60C500V10AS](#) [F60C500V15AS](#) [7563K84](#) [7634K36](#)  
[MDQ-3/16](#) [MDQ-7/10](#) [MDQ-V-1/10](#) [MDQ-V-1-1/4](#) [MDQ-V-1/16](#) [MDQ-V-1/2](#) [MDQ-V-1/4](#) [MDQ-V-3/16](#) [MDQ-V-3/8](#) [MDQ-V-6/10](#)