

General Information

| | |
|------------------------|---|
| Extended Product Type: | VM19 |
| Product ID: | 1SFN030300R1000 |
| EAN: | 7320500492574 |
| Catalog Description: | VM19 Mechanical Interlock Unit |
| Long Description: | Mechanical interlock for use with contactors AF116...AF370. For interlocking two contactors of equal frame size |

Categories

Products » Low Voltage Products and Systems » Control Products » Contactors » Block Contactors Accessories

Ordering

| | |
|-------------------------|---------------|
| EAN: | 7320500492574 |
| Minimum Order Quantity: | 1 piece |
| Customs Tariff Number: | 85389099 |

Dimensions

| | |
|---------------------|----------|
| Product Net Weight: | 0.054 kg |
|---------------------|----------|

Container Information

| | |
|-------------------------------|----------|
| Package Level 1 Units: | 1 piece |
| Package Level 1 Gross Weight: | 0.069 kg |

Environmental

| | |
|----------------------|---|
| Battery Information: | Type NONE |
| RoHS Status: | Following EU Directive 2002/95/EC August 18, 2005 and amendment |

Additional Information

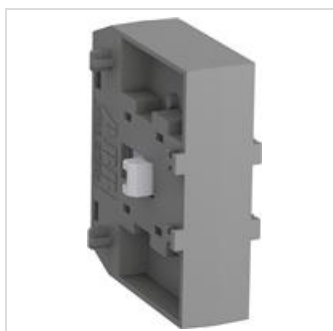
| | |
|-----------------------------|---------------------------|
| Order Multiple: | 1 piece |
| Product Main Type: | VM19 |
| Product Name: | Mechanical Interlock Unit |
| RoHS Date: | 1226 1 |
| Suitable For: | AF370 |
| Suitable for Product Class: | CONTACTORS |
| Terminal Type: | Screw Terminals |

Certificates and Declarations (Document Number)

| | |
|------------------------------------|-----------------|
| Data Sheet, Technical Information: | 1SBC100173C0201 |
| Declaration of Conformity - CE: | 2CMT004242 |

Classifications

| | |
|-----------------------------|--|
| ETIM 4: | EC001044 - Mechanic interlock for switch |
| ETIM 5: | EC001044 - Mechanic interlock for switch |
| Object Classification Code: | R |
| UNSPSC: | 39121529 |



X-ON Electronics

Largest Supplier of Electrical and Electronic Components

Click to view similar products for [Industrial Relays](#) category:

Click to view products by [ABB](#) manufacturer:

Other Similar products are found below :

[6-1618400-7](#) [686-117111](#) [686-120111](#) [EV250-4A-02](#) [EV250-6A-01](#) [FCA-125-CX8](#) [FCA-410-138](#) [8-1618393-1](#) [GCA32A208VAC60HZ](#)
[GCA32A220VAC50/60HZ](#) [GCA32A230VAC50/60HZ](#) [GCA32A240VAC50/60HZ](#) [GCA32A48VAC60HZ](#) [GCA63A120VAC50/60HZ](#)
[GCA63A208VAC60HZ](#) [GCA63A220VAC60HZ](#) [GCA63A230VAC50/60HZ](#) [GCA63A240VAC50/60HZ](#) [GCA63A277VAC60HZ](#)
[GCA63A48VAC60HZ](#) [GCA63A500VAC50/60HZ](#) [GCA63A600VAC60HZ](#) [GCA800A200VACDC](#) [GCA95A110VAC50/60HZ](#)
[GCA95A120VAC50/60HZ](#) [GCA95A12VDC](#) [GCA95A240VAC50/60HZ](#) [GCA95A24VAC50/60HZ](#) [GCA95A48VAC60HZ](#) [ACC530U20](#)
[ACC730U30](#) [1395832-1](#) [RM699BV-3011-85-1005](#) [RMIA210230AC](#) [RMIA45024AC](#) [1423675-8](#) [B07B032AC1-0329](#) [B329](#) [1617807-1](#)
[N417](#) [P25-E5019-1](#) [P30C42A12D1-120](#) [2-1618398-1](#) [PBO-18A1218](#) [2307497](#) [RPYA00324LT](#) [RPYA003A120LT](#) [KR-4539-1](#)
[RT334012WG](#) [S160156115](#)