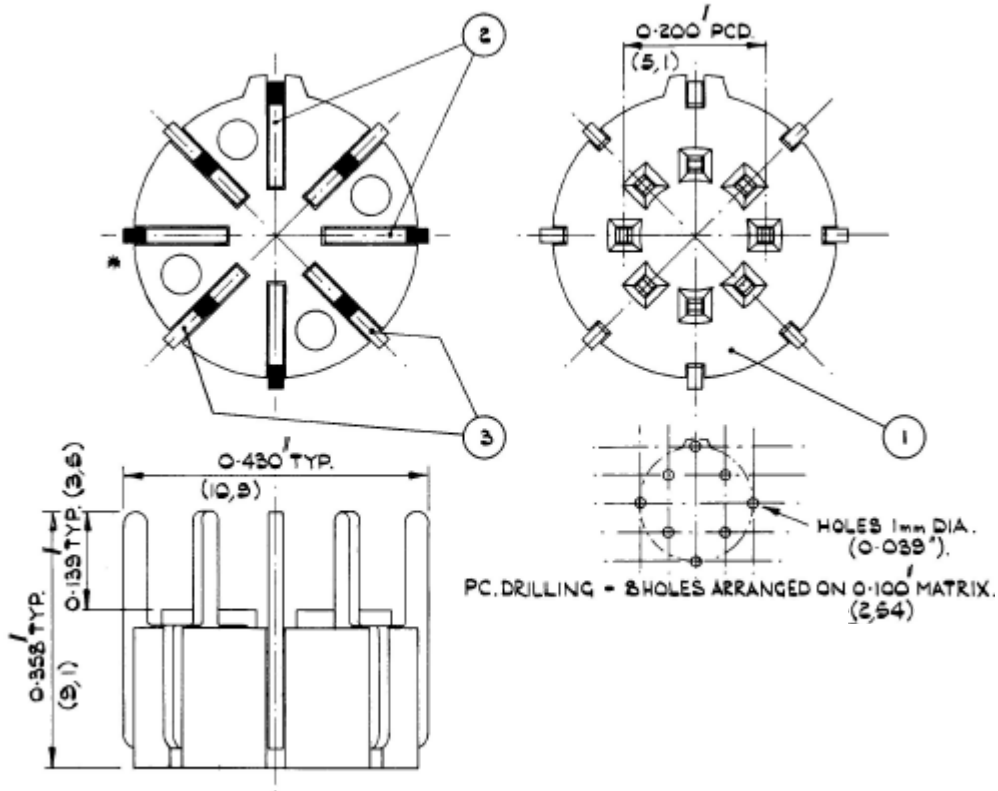


# WINSLOW ADAPTICs

## W3401G

### TO5, TO99 Transistor Socket

THIRD ANGLE PROJECTION



\* CONTACT TAILS IN BLACK FOR CLARITY.

Socket Body:	30% GF Polyester.
Contact:	Phosphor Bronze.
Contact Plating:	10u"Gold over Nickel.
Contact Life:	>5000 Insertions.
Temp Range:	-55 to +150
Current Rating/Contact:	1A



Also available from Winslow Adaptics are cost effective, time saving solutions to test, obsolescence, supply problems and upgrades. OEMs can upgrade equipment with custom Adaptics utilising additional logic, often saving considerable cost and time on re-design. If lead-time becomes an issue contact us for a suitable package converter. We specialise in conversion of all package lead-frames. For further information please contact your nearest sales office

## **X-ON Electronics**

Largest Supplier of Electrical and Electronic Components

*Click to view similar products for [winslow adaptics](#) manufacturer:*

Other Similar products are found below :

[W13111RC](#) [W13112RC](#) [W9535PRC](#) [W13130-FM1106GA5MM](#) [W9327-ZC160](#) [W9507RC](#) [W9506RC](#) [MON-8L](#) [A22-4026](#) [W3435G](#) [TO5-008D](#) [TO18-013D](#) [TO5-001D](#) [TO5-002D](#) [TO18-003D](#) [W35512TRC](#) [W81102T3825RC](#) [TO5-8L](#)