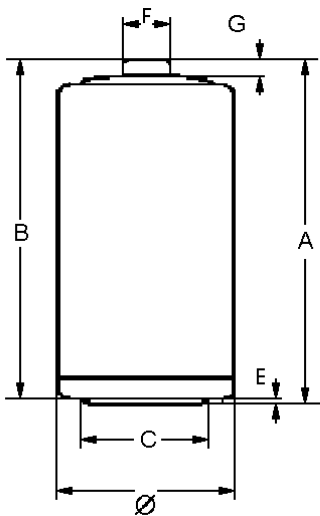


Type Number	4114
Designation IEC	LR14
System	Zn-MnO ₂ (Alkaline)
Shelf Life (Coding)*	5 years
Nominal Voltage [V]	1.5
Typical Capacity C [mAh]	7800 (discharge with high-resistance)
Permissible Temperature Range	- 10 °C ... 50 °C
Weight, approx. [g]	69
Volume [ccm]	26.5



Dimensions [mm]	min:	max:
Ø	24.9	26.2
A	-	50.0
B	48.6	-
C	13.0	-
E	-	0.9
F	-	7.5
G	1.5	-

Typical Capacities (at 20°C)

Discharge Type	Load	End Voltage[V]	1.0	0.9
4M/H,8H/D,7D/W	3.9 Ω	Time [m]	1170	1300
		Capacity [Ah]	6.10	6.65
		Energy [Wh]	7.35	8.05
Discharge Type	Load	End Voltage[V]	0.9	0.8
1H/D,7D/W	3.9 Ω	Time [h]	20.60	23.10
		Capacity [Ah]	6.01	6.58
		Energy [Wh]	7.01	7.45
Discharge Type	Load	End Voltage[V]	1.0	0.9
1H/D,7D/W	6.8 Ω	Time [h]	34.85	39.20
		Capacity [Ah]	6.24	6.85
		Energy [Wh]	7.65	8.25
Discharge Type	Load	End Voltage[V]	1.0	0.9
4H/D,7D/W	20 Ω	Time [h]	114.00	131.00
		Capacity [Ah]	7.10	8.00
		Energy [Wh]	9.15	9.90

* In consideration of typical loss of capacity at storage and application.

X-ON Electronics

Largest Supplier of Electrical and Electronic Components

Click to view similar products for [varta](#) manufacturer:

Other Similar products are found below :

[56456 702 099](#) [18750](#) [CA317-PB](#) [CG341-030-PB](#) [CG381D-G-100-PB](#) [CG511-030-PB](#) [CG511D-100-PB](#) [4120 210 501](#) [4610 726 406](#)
[CA311-PB](#) [CA312-PB](#) [LCD-CHARGER + 4XAA 2400MAH](#) [449915B](#) [4607 726 406](#) [CG341-050-PB](#) [CG381D-G-050-PB](#) [CG511D-018-PB](#)
[55171403014](#) [55625603059](#) [55615602940](#) [MINI-CHARGER](#) [MINI CHARGER + 2XAA 2100MAH](#) [17730](#) [LCD-SMART-CHARGER](#)
[414086X](#) [CG511D-030-PB](#) [POCKET-CHARGER + 4XAA 2100MAH](#) [LCD MULTI CHARGER](#) [458980A](#) [CG511-150-PB](#) [EE UNIVERSAL](#)
[CHARGER](#) [CG401D-050-PB](#) [CG511-050-PB](#) [CU303-018-PB](#) [413675G](#) [CU202-030-PB](#) [CU201G-B-030-PB](#) [55615603059](#) [CG381D-G-150-](#)
[PB](#) [CG481G-050-PB](#) [4600 726 406](#) [095668F](#) [CA418-PB](#) [CU302-030-PB](#) [CG481G-030-PB](#) [CG511D-150-PB](#) [20389101501](#) [CU201G-B-050-](#)
[PB](#) [CA089-PB](#) [CU202G-B-030-PB](#)