


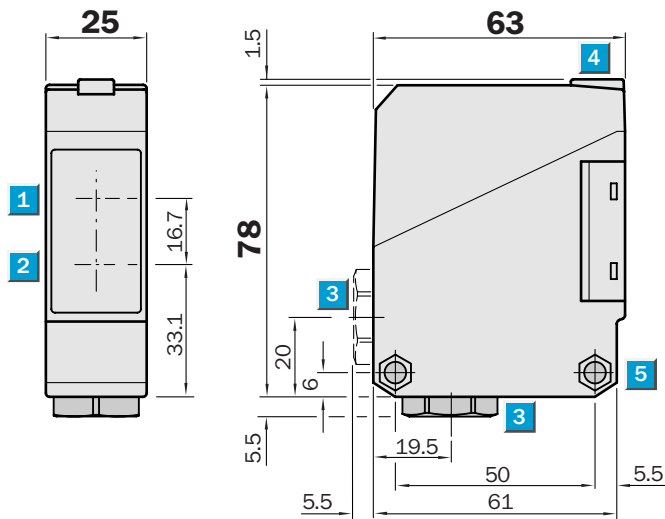
WL 260 Photoelectric reflex switch, red light – UC


Scanning range
0.01 ... 15 m

Photoelectric reflex switch

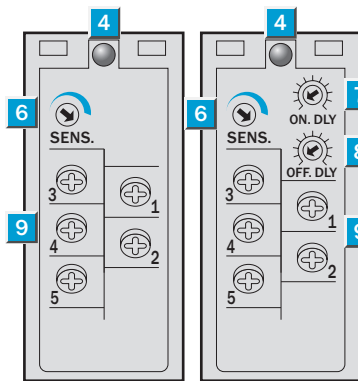
- Universal voltage
- Polarizing filter providing reliable detection even of objects with shiny surfaces
- Terminal chamber
- Relay output, SPDT, time delays
- CE generic emission standard EN 61000-6-3 ("Residential and Commercial Areas")

Dimensional drawing



Adjustments possible

WL 260-S 270 WL 260-R 270

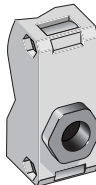
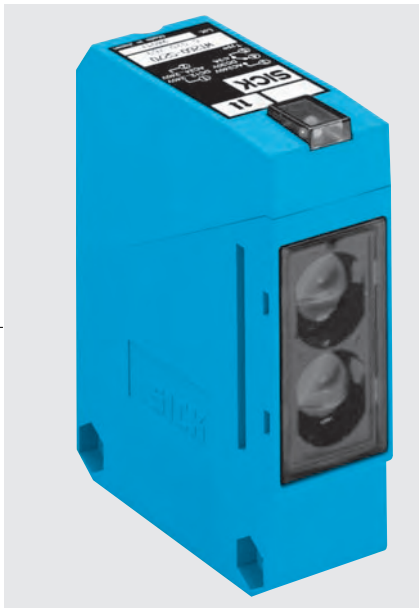


- 1 Middle of optic axis, receiver
- 2 Middle of optic axis, sender
- 3 Cable entry gland 1/2" PF thread for cable diameters from 6 to 10 mm optionally at bottom or rear
- 4 LED signal strength indicator, red
- 5 Through hole \varnothing 5.2 mm on both sides for M5 hex nut
- 6 Sensitivity control
- 7 Time control ON delay t_{ON}
- 8 Time control OFF delay t_{OFF}
- 9 Terminals

Connection types

WL 260-S 270

WL 260-R 270



See chapter Accessories

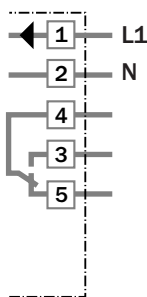
Mounting systems*)

Reflectors **)

*) Mounting bracket included with delivery

**) Reflector P 250 included with delivery

Terminals



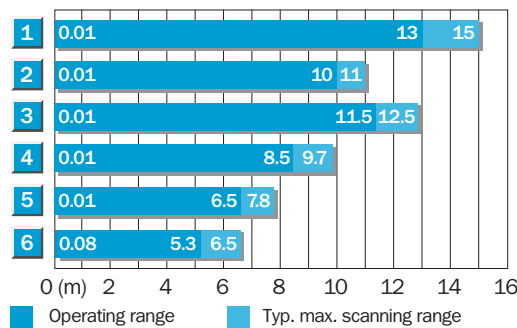
Technical data		WL 260-	S 270	R 270
Scanning range , typ. max./on reflector	0.01 to 15 m/PL 80 A			
	typ. max./on reflector 0.01 to 11 m/P 250 (included)			
Operating range	0.01 to 10 m/P 250			
Sensitivity	Adjustable, potentiometer 270°			
Light source ¹⁾	LED, visible red light			
	With polarizing filter			
Light spot diameter	Approx. 300 mm at 10 m			
Aperture angle sender	Approx. 1.7°			
Supply voltage V _S ²⁾	12 to 240 V DC			
	24 to 240 V AC			
Power consumption	≤ 5 VA			
Switching output	Relay, SPDT, electrically isolated ³⁾			
	Switching current I max	3 A/240 V AC; 3 A/30 V DC ⁴⁾		
	Light receiver, switching mode	Light-switching		
	Response time	≤ 20 ms		
	Switching frequency max. ⁵⁾	25/s		
Time delays				
ON delay t _{ON}	0.1 to 10 s, can be connected separately			
OFF delay t _{OFF}	0.1 to 10 s, can be connected separately			
Connection type	Terminal chamber			
CE generic emission standard	Level EN 61000-6-3 ("Residential and Commercial Areas")			
VDE protection class ⁶⁾	□			
Circuit protection ⁷⁾	A, C			
Enclosure rating	IP 67			
Ambient temperature T _A	Operation - 25 °C ... + 55 °C			
	Storage - 40 °C ... + 70 °C			
Weight	Approx. 120 g			
Material	Housing: ABS; Optics: PMMA			

¹⁾ Average service life 100,000 h at T_A = + 25 °C
²⁾ ± 10 %

³⁾ Provide suitable spark suppression for inductive or capacitive loads
⁴⁾ Usage categorie to EN 60947-1, 15 AC, 13 DC

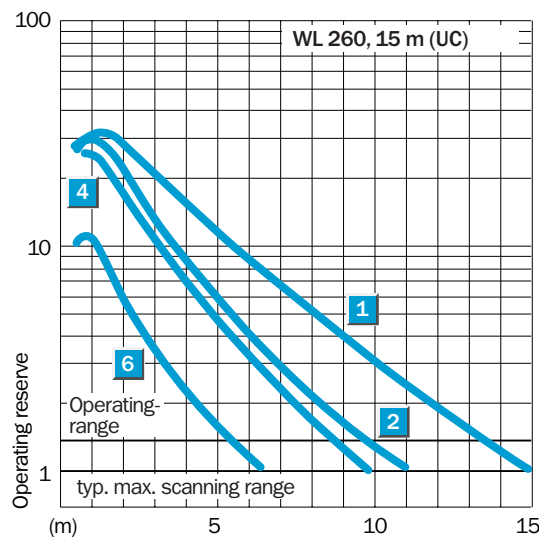
⁵⁾ With light/dark ratio 1:1
⁶⁾ Reference voltage 250 V UC
⁷⁾ A = V_S connections reverse-polarity protected
C = Interference suppression

Scanning range and operating reserve



Reflector type	Operating range
1 PL 80 A	0.01 ... 13.0 m
2 P 250	0.01 ... 10.0 m
3 PL 50 A or PL 40 A	0.01 ... 11.5 m
4 PL 30 A or PL 31 A	0.01 ... 8.5 m
5 PL 20 A	0.01 ... 6.5 m
6 Reflective tape Diamond Grade	0.08 ... 5.3 m

05-08-2006



Order information

Type	Order no.
WL 260-S 270	6 020 767
WL 260-R 270	6 020 768

X-ON Electronics

Largest Supplier of Electrical and Electronic Components

Click to view similar products for [sick manufacturer](#):

Other Similar products are found below :

[6-020-768](#) [PL20A](#) [GRL18-P2437](#) [GRSE18-P2422](#) [IM05-0B8NS-ZT1](#) [IM08-02BPS-ZWK](#) [IM08-1B5PS-ZT1](#) [IME18-05BPSZW2K](#) [IME18-12NPSZC0K](#) [KT6W-2P5116](#) [GRSE18-P2447](#) [GRTE18-P2412](#) [GRTE18-P2442](#) [IM30-15NPS-ZW1](#) [IME12-04NPSZW2K](#) [IME12-08NPSZW2S](#) [KTM-MB31111P](#) [VTE18-4N2212](#) [VTE18-4P8740](#) [LL3-TB01](#) [MZT8-28VPS-KP0](#) [WL11-2P2430](#) [WLL180T-P434](#) [WL260-R270](#) [VTF18-4P1612](#) [VTF-18-4N1240](#) [VL180-2P42436](#) [WTE280-2P1131](#) [WTE11-2P2432](#) [CM30-25NNP-EC1](#) [CM18-08BNP-EW1](#) [CM18-08BPP-EW1](#) [CM18-12NNP-EC1](#) [CM18-12NPP-EW1](#) [CM30-16BPP-EC1](#) [CM30-25NPP-EW1](#) [E100-A2A22C05A](#) [GRL18-P1137](#) [KUP-0608-S](#) [KUP-0610-F](#) [MM12-60APS-ZUK](#) [DFS60B-S1PA10000](#) [GRL18-P1132](#) [WL150-P430](#) [WSE11-2N2430](#) [WSE4-3P2230](#) [WL2SG-2F3235](#) [IQ40-40NPPKC0K](#) [IQ40-20BPPKC0K](#) [IMB30-20NPPVC0S](#)