



Art No. AA0045

Express USB charger

Most of people have the problem when the iPad, Galaxy Tab or other device is connected to the laptop or to the ordinary USB power adapter, it may not be able to charge normally or can only charge at a current of 500mA. With this express USB charger AA0045, it can increase the charging current between 500mA and 2.1 A depend on your device and allow you to charge your Tablet PC during Synchronization. You can charge smart device as quick as the power adapter.

Features:

- Charge smart device (iPhone, iPad, Android Phones, Tablets, etc.) as quick as the power adapter
- Lightweight, energy efficient, Perfect for frequent travelers
- Charge your Tablet PC during Synchronization!
- Just connect it to a PC & charge the devices quickly

Three LED modes

There are three modes of the switch:



Blue



Red



Off

| LED colors | Apple Devices | Android Devices | Other Smart Devices |
|------------|-------------------------------------|-----------------|---------------------|
| Blue | ● | X | ● |
| Red | X | ● | ● |
| Off | Transmit data between device and PC | | |



Art No. AA0045

Express USB charger

Specifications:

| | |
|-----------------------|----------------------------------|
| Input Connector | USB AM |
| Output Connector | USB AF |
| Input | DC 5V |
| Output | 500mA~2.1mA @ DC 5V |
| LED | yes |
| Size (L-W-H) | 45×19×9mm |
| Weight | 9.7g |
| Operating Temperature | 0 °C to +70°C |
| Operating Humidity | 10% to 85 % RH (no condensation) |
| Storage Temperature | -10°C to +80°C |
| Storage Humidity | 5% to 90 % RH (no condensation) |

Package Contents:

- 1 x Express USB charger
- 1 x User Manual

Packaging Information:

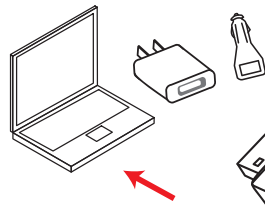
- Packing Dimension: 166 x 100 x 18mm
- Packing Weight: 0.0418kg
- Carton Dimension: 380 x 370 x 220mm
- Carton Q'ty: 120pcs
- Carton Weight: 5.8kg



Art No. AA0045

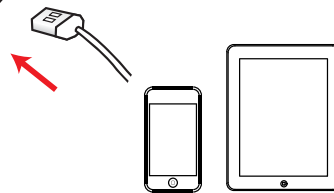
Express USB charger

Connection Diagram



1 Connect your smart phone/pad device to AA0045 through an USB cable.

2 Connect AA0045 to a laptop, USB power adaptor or a car charger. Then you are ready to charge up.



* The specifications and pictures are subject to change without notice.
*All trade names referenced are the registered network of their respective owners.



X-ON Electronics

Largest Supplier of Electrical and Electronic Components

Click to view similar products for [Input Devices](#) category:

Click to view products by [Logilink](#) manufacturer:

Other Similar products are found below :

[80260-08](#) [M11L0A1](#) [M11L0B1M](#) [M21L0H1PX](#) [M41C091P100](#) [80260-00](#) [81521-08](#) [FKB4720-103](#) [84250-26](#) [84980-04](#) [84S-AC1-000](#)
[C10O0C1P](#) [JD-0700EU-2](#) [JM-0800-2](#) [JOY-THUMB](#) [JW-T0100](#) [89498-13](#) [89758-05](#) [89886-26](#) [89941-00](#) [FQ-XT](#) [G3-A1AM151NNNN](#)
[G80-3000LSCEU-2](#) [M11C011B](#) [TH500P00D4](#) [MJ0FGGRY](#) [JM-0800-0](#) [KBCV-4100W](#) [MR2110R5BB](#) [60C22-M7-4-020S](#) [67A-DF-3C-](#)
[060C](#) [84S-BB1-004](#) [81601-26](#) [G8011900LPMUS0](#) [G844420LUBEU0](#) [G84-4700LUCUS-0](#) [89701-26](#) [81485-26](#) [84105-13](#) [V400-W24 5M](#)
[V400-W23 5M](#) [G84-5200LCMEU-2](#) [M11F061P](#) [84Z2029-100](#) [4P182F1D0100](#) [M41L091M](#) [M41L091P](#) [60A00-8-050C](#) [84Z2029-78](#)
[XD2CF1111](#)