

## M12-Receptacle Connectors In Accordance With IEC 61076-2-101

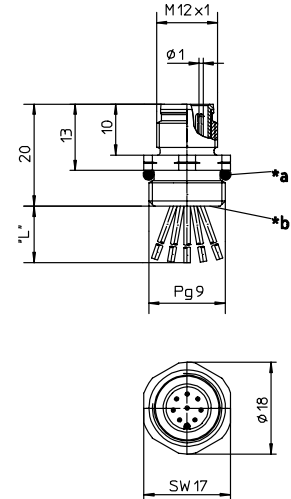
RSF 3...8 | RKF 3...8



### Male, 3-, 4-, 5- and 8-Pole

Receptacle, 3-, 4-, 5-, and 8-pole, male, M12 for front mounting, 24 and 22 AWG, panel mount thread PG9.

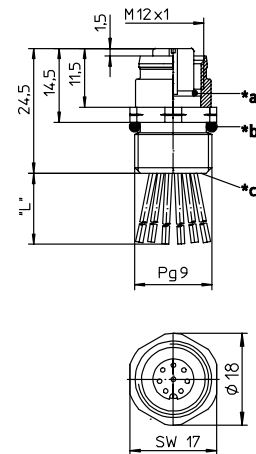
RSF 3...8



### Female, 3-, 4-, 5- and 8-Pole

Receptacle, 3-, 4-, 5-, and 8-pole, female, M12 for front mounting, 24 and 22 AWG, panel mount thread PG9.

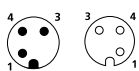
RKF 3...8



### Pin Assignments

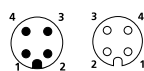
Face Views / M12, Male / Female

#### 3 pole



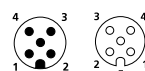
1 = brown  
2 = n.c.  
3 = blue  
4 = black

#### 4 pole



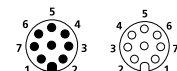
1 = brown  
2 = white  
3 = blue  
4 = black

#### 5 pole



1 = brown  
2 = white  
3 = blue  
4 = black  
5 = green/yellow

#### 8 pole



1 = white  
2 = brown  
3 = green  
4 = yellow  
5 = grey  
6 = pink  
7 = blue  
8 = red



## M12-Receptacle Connectors In Accordance With IEC 61076-2-101

RSF 3...8 | RKF 3...8

### Technical Data

#### Environmental

Degree of protection IP 67 / NEMA 6P  
 Operating temperature range -40°C (-40°F) / +90°C (+194°F)

#### Mechanical









Housing Brass, nickel-plated  
 Insert PUR, black (female)  
 3-, 4- and 5-Pole: Nylon (male)  
 8-Pole: PUR, black (male)  
 Contact Brass, gold over nickel-plated

#### Electrical

Current rating 3-5 Pole: 4 A  
 8 Pole: 1.5 A  
 Voltage rating 3-5 Pole: 250 V  
 8 Pole: 30 V / 36 V DC

#### Accessories

Panel nut (RSKF 9)

Part Number	Pins	Characteristics
RSF 3/0.5M      RKF 4-3/0.5M	3	 
RSF 4/0.5M      RKF 4/0.5M	4	 
RSF 5/0.5M      RKF 5/0.5M	5	 
RSF 8/0.5M      RKF 8/0.5M	8	 

## X-ON Electronics

Largest Supplier of Electrical and Electronic Components

*Click to view similar products for [lumberg](#) manufacturer:*

Other Similar products are found below :

[RK20-603/5M](#) [ASBSM 10/LED 3](#) [ASBS-R 8/LED 5-4](#) [ASBSV 8 5](#) [BTOR 1 SCHWARZ](#) [18315 0976 PMC 151](#) [KRE8](#) [SBS 4/LED 3](#)  
[RK30/2M](#) [RKWT 4-07/5M](#) [ASBS-R 4 5-4](#) [ASBS-R 4/LED 5-4](#) [BTO 1 SCHWARZ](#) [BTO 1 V SCHWARZ](#) [BTOR 1 WEISS](#) [KB3](#) [KRES10](#)  
[KRESS8](#) [KS8](#) [KRM 07](#) [0103 03](#) [WKV 81](#) [RK 30-738/20F](#) [RKMV 4-225/10 M](#) [RKT 5-644/2M](#) [RKT 4-679/5M](#) [HZ30](#) [ASBS 2 M12-S2326](#)  
[1614 16](#) [0985 706 100/10M](#) [RST 4-RKWT 4-602/1M](#) [WKV50](#) [RST 4-633/2M](#) [RST 4-RKWT 4-602/3M](#) [RS-TU](#) [WSV 30](#) [0986 EMC 102](#)  
[0250 03](#) [RKWT 5-612/5M](#) [0980 ESL 393-121](#) [RST 5L-RKT 5L-949/5 M](#) [ASBM 6/LED 3-344/5 M](#) [RKT 4-646/2M](#) [RKHL 8/S 5,5](#) [0985](#)  
[YM57530 100/20M](#) [0985 YM57530 500/1M](#) [RST 4-RKT 4-637/2M](#) [RKT 5L-949/5 M](#) [RST 3-RKMV 3-224/2 M](#) [RST 5-RKT 5-647/5M](#)