

M12-Receptacle Connectors In Accordance With IEC 61076-2-101

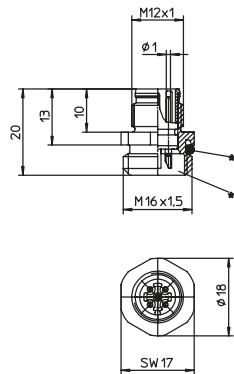
RSFM | PRSFM



Male, 3-, 4- and 5-Pole

Receptacle connector, combined FIXCON/M12 male connector for front mounting, solder connections, chassis side thread M16 x 1.5 (panel nut RSKFM 16).

RSFM



- *a O-ring enclosed separately
- *b Attention!
To ensure mechanical stability and impermeability, the wire connections must be epoxy potted after cable assembly.

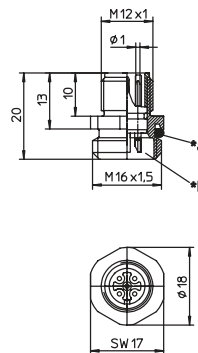


Male, 3-, 4- and 5-Pole

Receptacle connector, M12 male connector for front mounting, housing of stainless steel, solder contacts not potted, chassis side thread M16 x 1.5 (panel nut RSKFM 16)

– especially designed for use in food processing equipment –.

PRSFM



- *a O-ring enclosed separately
- *b Attention!
To ensure mechanical stability and impermeability, the wire connections must be epoxy potted after cable assembly.

Pin Assignments

Face Views / M12

3 poles



4 poles



5 poles





Be Certain with Belden

M12-Receptacle Connectors In Accordance With IEC 61076-2-101 RSFM | PRSFM

Technical Data

Environmental

Degree of protection	IP 67 / NEMA 6P
Operating temperature range	RSFM: -25°C (-13°F) / +80°C (+176°F) PRSFM: -25°C (-13°F) / +70°C (+158°F)

Mechanical

Housing / Molded body	RSFM: CuZn, nickel-plated PRSFM: stainless steel
Insert	RSFM: PA PRSFM: PBT
Contact	CuZn, pre-nickel and 0.8 microns gold-plated
O-ring	RSFM: FKM PRSFM: EPDM

Electrical

Contact resistance	≤ 5 mΩ
Nominal current at 40°C	4 A
Nominal voltage	3–4 poles 240 V 5 poles 60 V Connection area must be epoxy potted.
Rated voltage	3–4 poles 250 V 5 poles 63 V
Test voltage	3–4 poles 2.0 kV eff. / 60 s 5–8 poles 1.5 kV eff. / 60 s
Insulation resistance	> 10 ⁹ Ω
Pollution degree	3

Part Number	Pins	Characteristics
RSFM 3	3	
RSFM 4	4	
PRSFM 4		
RSFM 5	5	
PRSFM 5		

X-ON Electronics

Largest Supplier of Electrical and Electronic Components

Click to view similar products for [lumberg](#) manufacturer:

Other Similar products are found below :

[RK20-603/5M](#) [ASBSM 10/LED 3](#) [ASBS-R 8/LED 5-4](#) [ASBSV 8 5](#) [BTOR 1 SCHWARZ](#) [18315 0976 PMC 151](#) [KRE8](#) [SBS 4/LED 3](#)
[RK30/2M](#) [RKWT 4-07/5M](#) [ASBS-R 4 5-4](#) [ASBS-R 4/LED 5-4](#) [BTO 1 SCHWARZ](#) [BTO 1 V SCHWARZ](#) [BTOR 1 WEISS](#) [KB3](#) [KRES10](#)
[KRESS8](#) [KS8](#) [KRM 07](#) [0103 03](#) [WKV 81](#) [RK 30-738/20F](#) [RKMV 4-225/10 M](#) [RKT 5-644/2M](#) [RKT 4-679/5M](#) [HZ30](#) [ASBS 2 M12-S2326](#)
[1614 16](#) [0985 706 100/10M](#) [RST 4-RKWT 4-602/1M](#) [WKV50](#) [RST 4-633/2M](#) [RST 4-RKWT 4-602/3M](#) [RS-TU](#) [WSV 30](#) [0986 EMC 102](#)
[0250 03](#) [RKWT 5-612/5M](#) [0980 ESL 393-121](#) [RST 5L-RKT 5L-949/5 M](#) [ASBM 6/LED 3-344/5 M](#) [RKT 4-646/2M](#) [RKHL 8/S 5,5](#) [0985](#)
[YM57530 100/20M](#) [0985 YM57530 500/1M](#) [RST 4-RKT 4-637/2M](#) [RKT 5L-949/5 M](#) [RST 3-RKMV 3-224/2 M](#) [RST 5-RKT 5-647/5M](#)