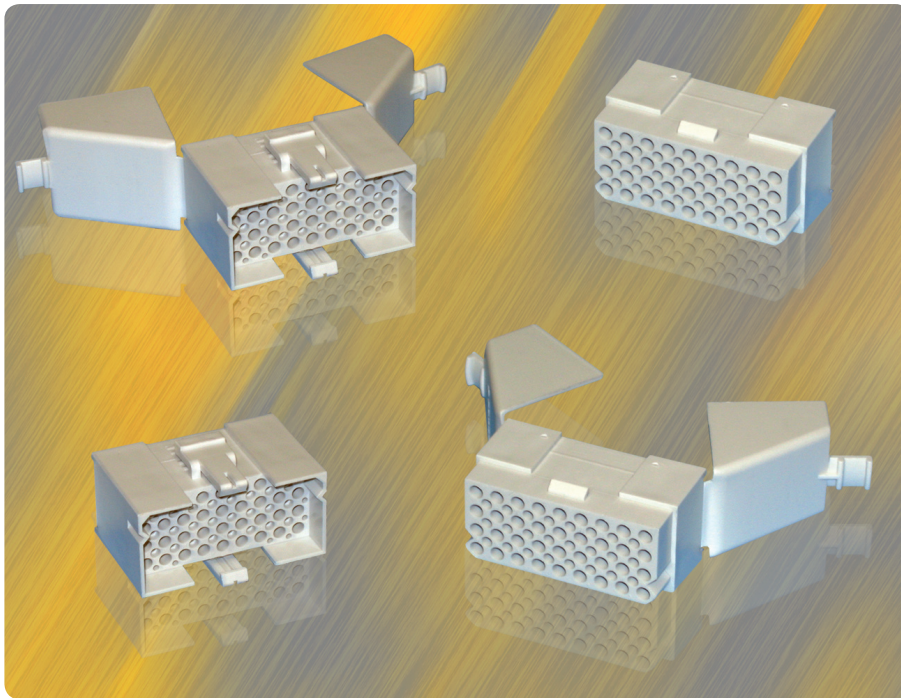


SMS Flame Retardant



Description

Quickmating cable connectors

SMS Flame Retardant connector is a range of lightweight plastic rectangular connectors that offer an excellent fire & smoke resistance.

- This SMS connector is available in 2 versions, both in 10 contact layouts and up to 36 contacts
- Connectors are using AWG 16 removable snap-lock TRIM TRIO® contacts.

Applications

SMS Flame Retardant connector is suitable for indoor railway equipments in :

- Passengers compartments
- Driver cabins
- Electrical operating areas

Benefits

Suitable for indoor railway applications

- Fire & smoke specifications : **requirement II / I3F2** according to **NFF16 101 / 16 102 standards**
- UL94V0 material

Ideal for tight space integration & for high density contact applications

- Compact & up to 36 contacts

Excellent durability

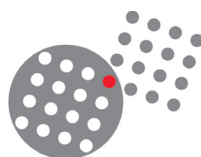
- 500 matings / unmatings

Respect for environment

- RoHS compliant

Souriau's offer

- 10 layouts, from 2 to 36 TRIM TRIO® AWG16 contacts
- 2 versions : with integrated strain relief hood or without
- Panel mount receptacle available
- Possibility of keying system



SOURIAU
Connection Technology

SMS Flame Retardant



Technical characteristics

Mechanical

- Durability 500 matings & unmatings
- Color Grey

Electrical

- Current per contact 13A
- Insulation resistance 5000 MΩ min.
- Rated voltage 2000 Vac
- Operating voltage 500 V according to UL1977

Environmental

- Operating temperature -40°C to + 105°C
- Sealing in mated condition IP40
- Flammability rating I3F2 according to NFF16101 / 16102 standards

Material

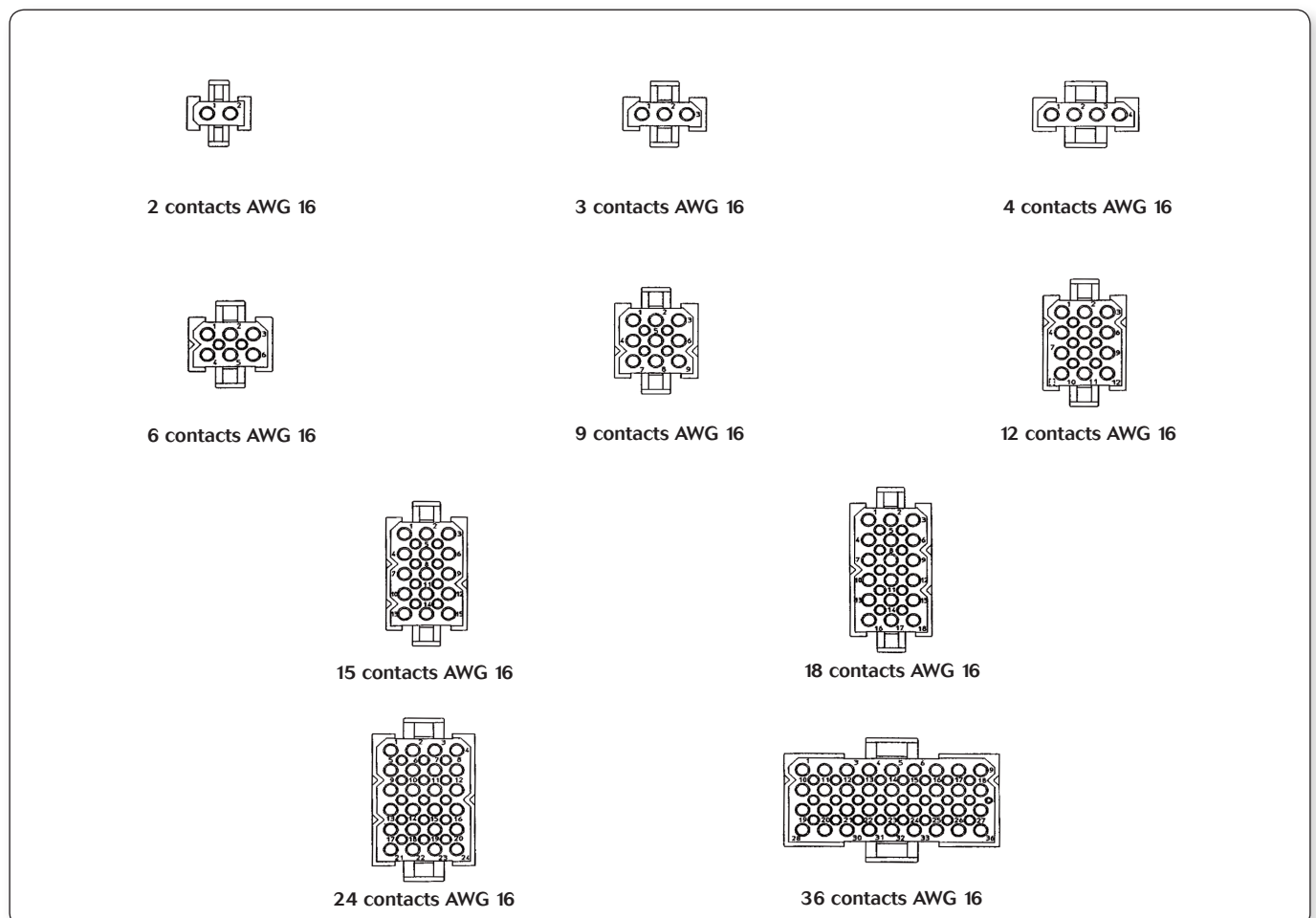
- Insulating material Polyamide 6.6 - UL94V0
- Contamination class 1

How to order*

Connector family	SMS	4	PDH3
	SMS	36	RD3
Number of contacts : 2, 3, 4, 6, 9, 12, 15, 18, 24, 36			
Design variation			
PDH3	Flame Retardant plug with integrated strain relief hood		
RDH3	Flame Retardant receptacle with integrated strain relief hood		
PD3	Flame Retardant plug without strain relief hood		
RD3	Flame Retardant receptacle without strain relief hood		
R3	Flame Retardant panel mount receptacle		

* Contacts to be ordered separately, please refer to the RC/RM machined contacts AWG 16 in the TRIM TRIO® catalogue.

Contact layouts

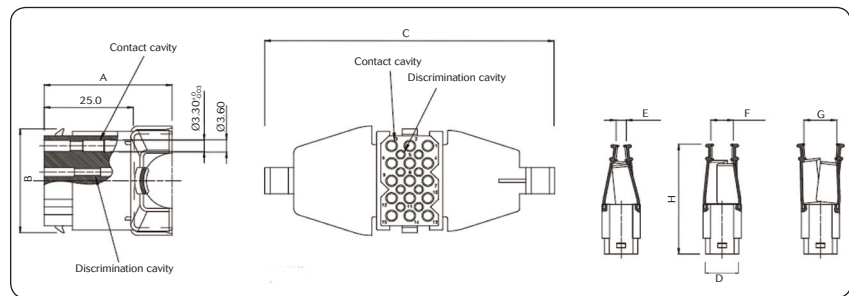
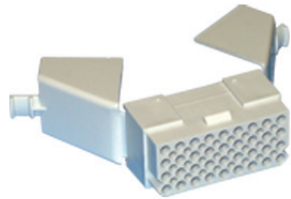


SMS Flame Retardant



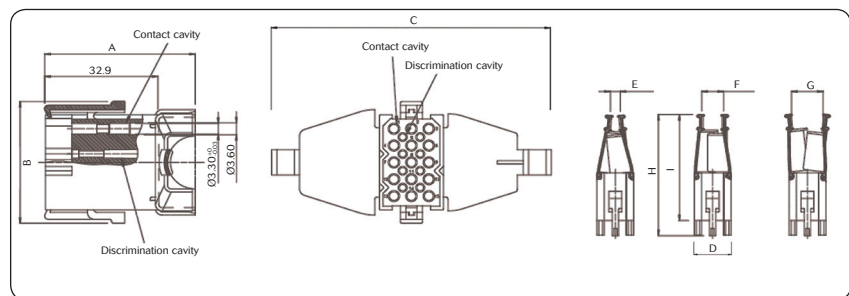
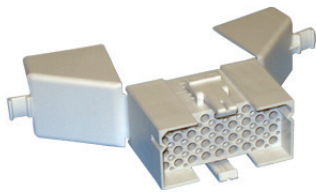
Range presentation

Cable receptacle with integrated strain relief hood



Part numbers	Number of contact cavities	Number of discrimination cavities	A	B	C	D	E	F	G	H	Cable range	Recommended unirap cable tie
SMS2RDH3	2	0	31.6	9.9	64.8	11.1	0.5	7.4	8.4	49.2	0.5 - 8.4	TF4BKD
SMS3RDH3	3	0	35.1		69.0	16.2	0.8	4.1	7.3		0.8 - 7.3	
SMS4RDH3	4	0	38.2		74.4	21.2	1.5	5.4	10.0		1.5 - 10.0	
SMS6RDH3	6	2	34.6	15.0	72.6	16.2	1.7	6.8	9.2	50.9	1.7 - 9.2	TF5BKD
SMS9RDH3	9	4	35.8	20.0	75.3		3.9	9.3	12.3	52.2	3.9 - 14.3	
SMS12RDH3	12	6	38.1	25.1	72.0		4.0	10.0	15.0	52.7	4.0 - 15.0	
SMS15RDH3	15	8	35.9	30.2	81.3	21.2	5.0	11.0	16.2	55.2	5.0 - 16.2	TF5BKD
SMS18RDH3	18	10	36.1	35.3			5.8	12.5	20.3		5.8 - 20.3	
SMS24RDH3	24	15	39.7	90.4			7.1	12.4	20.4		57.2	
SMS36RDH3	36	24	54.6	25.1	128.0	46.6	8.8	13.0	24.5	63.3	8.8 - 24.5	

Cable plug with integrated strain relief hood



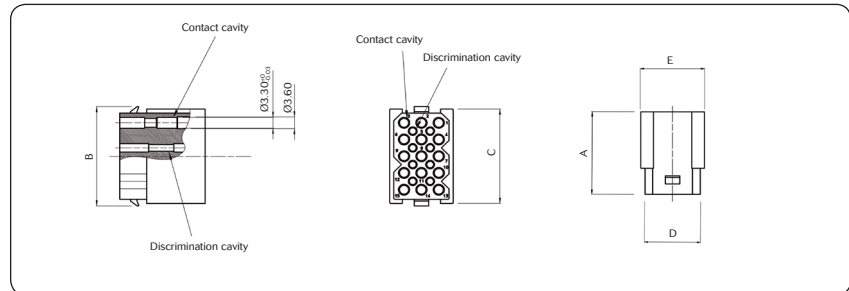
Part numbers	Number of contact cavities	Number of discrimination cavities	A	B	C	D	E	F	G	H	I	Cable range	Recommended unirap cable tie
SMS2PDH3	2	0	39.5	16.4	64.8	14.1	0.5	7.4	8.4	57.1	49.2	0.5 - 8.4	TF4BKD
SMS3PDH3	3	0	43.0		69.0	18.6	0.8	4.1	7.3			0.8 - 7.3	
SMS4PDH3	4	0	46.1		74.4	23.7	1.5	5.4	10.0			1.5 - 10.0	
SMS6PDH3	6	2	42.5	21.5	72.6	18.6	1.7	6.8	9.2	58.8	50.9	1.7 - 9.2	TF5BKD
SMS9PDH3	9	4	43.7	26.7	75.3		3.9	9.3	12.3	60.1	52.2	3.9 - 14.3	
SMS12PDH3	12	6	46.0	31.7	72.0		4.0	10.0	15.0	60.6	52.7	4.0 - 15.0	
SMS15PDH3	15	8	43.8	36.7	81.3	23.7	5.0	11.0	16.2	63.1	55.2	5.0 - 16.2	TF5BKD
SMS18PDH3	18	10	44.0	41.8			5.8	12.5	20.3			5.8 - 20.3	
SMS24PDH3	24	15	47.6	90.4			7.1	12.4	20.4			65.1	
SMS36PDH3	36	24	62.5	31.7	128.0	49.1	8.8	13.0	24.5	71.2	63.3	8.8 - 24.5	

Note : all dimensions are in mm

SMS Flame Retardant

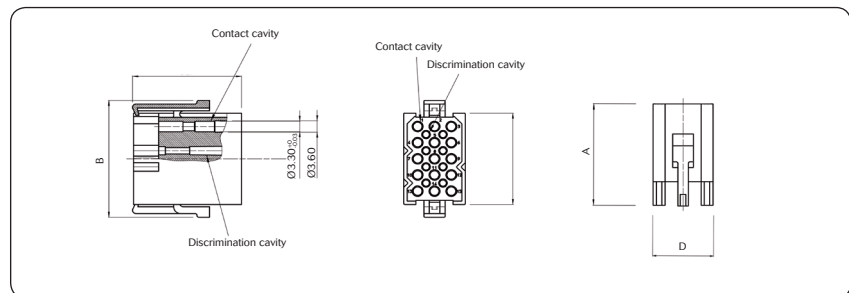


Cable receptacle without strain relief hood



Part numbers	Number of contact cavities	Number of discrimination cavities	A	B	C	D	E
SMS2RD3	2	0	25.0	9.9	8.4	11.1	14.1
SMS3RD3	3	0		9.9	8.4	16.2	18.6
SMS4RD3	4	0		9.9	8.4	21.2	23.7
SMS6RD3	6	2		15.0	13.4	16.2	18.6
SMS9RD3	9	4		20.0	18.5	16.2	18.6
SMS12RD3	12	6		25.1	23.6	16.2	18.6
SMS15RD3	15	8		30.2	28.7	16.2	18.6
SMS18RD3	18	10		35.3	33.8	16.2	18.6
SMS24RD3	24	15		35.3	33.8	21.2	23.7
SMS36RD3	36	24		25.1	23.6	46.6	49.1

Cable plug without strain relief hood



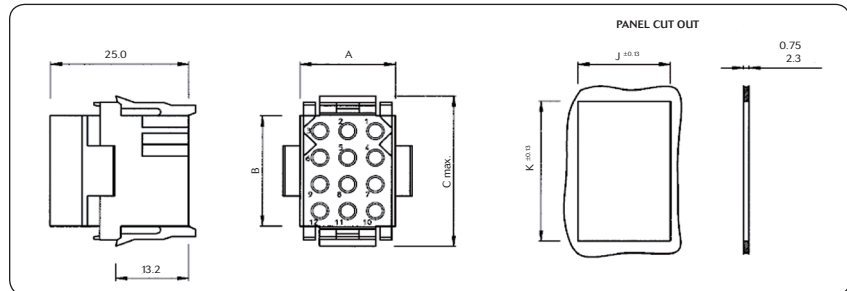
Part numbers	Number of contact cavities	Number of discrimination cavities	A	B	C	D
SMS2PD3	2	0	32.7	16.4	8.4	14.1
SMS3PD3	3	0		16.4	8.4	18.6
SMS4PD3	4	0		16.4	8.4	23.7
SMS6PD3	6	2		21.5	13.4	18.6
SMS9PD3	9	4		26.7	18.5	18.6
SMS12PD3	12	6		31.7	23.6	18.6
SMS15PD3	15	8		36.7	28.7	18.6
SMS18PD3	18	10		41.8	33.8	18.6
SMS24PD3	24	15		41.8	33.8	23.7
SMS36PD3	36	24		31.7	23.6	49.1

Note : all dimensions are in mm

SMS Flame Retardant



Panel mount receptacle



Part numbers	Number of contact cavities	A	B	C max.	J ± 0.13	K ± 0.13
SMS2R3	2	11.0	5.8	15.2	11.4	11.6
SMS3R3	3	16.2			16.5	
SMS4R3	4	21.2			21.7	
SMS6R3	6	16.2	10.9	20.3	16.5	16.7
SMS9R3	9		16.0	25.4		21.6
SMS12R3	12		21.1	30.5	16.7	26.7
SMS15R3	15		26.2	35.6		31.8
SMS18R3	18		31.2	40.6		36.9
SMS24R3	24		21.2	21.1	30.5	21.7
SMS36R3	36	46.6	47.1			

For further information, visit our website www.souriau-industrial.com
or contact us at contactindustry@souriau.com

X-ON Electronics

Largest Supplier of Electrical and Electronic Components

Click to view similar products for [Headers & Wire Housings](#) category:

Click to view products by [Sunbank](#) manufacturer:

Other Similar products are found below :

[95000-104TRLF](#) [10135584-644402LF](#) [DF62W-EP2022PCA](#) [95000-106TRLF](#) [DF62W-2022SCA](#) [DF62W-EP2022PC](#) [2203348](#) [DF62W-2022SC](#) [1084018](#) [1029039](#) [1084017](#) [802-10-012-10-002000](#) [1112640](#) [1112639](#) [000-34000](#) [0009482033](#) [0009507031](#) [57102-S06-03LF](#) [57202-S52-04LF](#) [PCN6-15S-2.5E](#) [0039019024](#) [58102-G61-06LF](#) [582553-1](#) [0009485154](#) [0009508121](#) [0022285053](#) [0050291907](#) [018731A](#) [LY20-4P-DT1-P1E-BR](#) [02.125.8002.8](#) [60101931](#) [60598-1 \(Cut Strip\)](#) [M1625-3R/100](#) [61062-3](#) [61082-181009](#) [636-1427](#) [638009-1](#) [641938-9](#) [641991-4](#) [644168-1](#) [647662-1](#) [65039-019ELF](#) [65817-002LF](#) [65817-015LF](#) [65863-015LF](#) [66207-023LF](#) [67016-026LF](#) [67046-001LF](#) [67095-007LF](#) [67230-005LF](#)