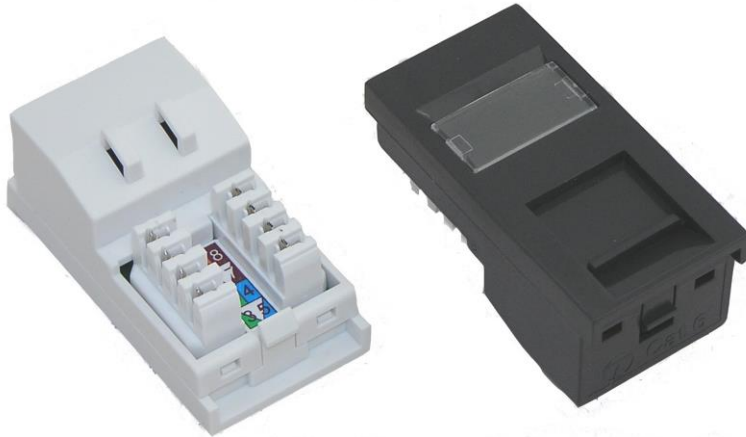


Category 6 high performance UTP outlet



Cat6 UTP module bright white (SJKwhB) and black (SJKbkB)

This high quality outlet fully performs to Category 6 TAI/EIA-568-B.2 at component level, can be quickly and easily terminated and fits into most standard faceplates.

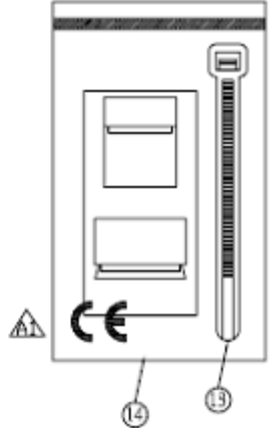
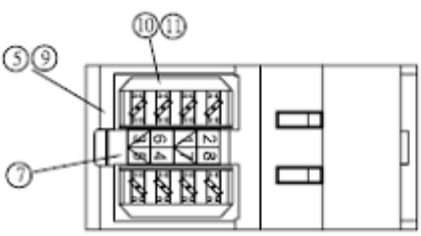
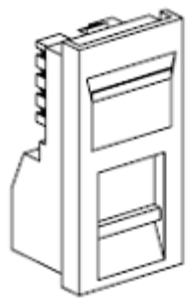
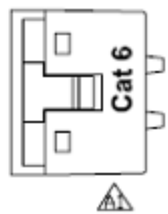
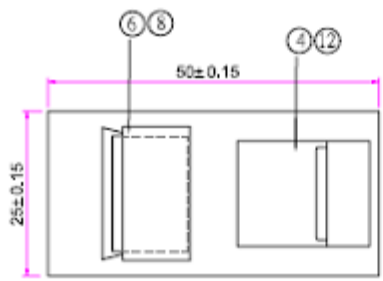
Features

- Performs to Category 6 at component level
- Low profile design, shuttered
- Fitted with industry standard Krone (LSA+) type IDC connections
- Compatible with most 'Euro-style' 86 x 86 faceplates
- 'Slip-in' label facility for port identification
- Integral cable tie point
- Supplied with T568B wiring label and cable tie

Specifications

- Dimensions: 50x25x25mm
- Weight: 15g
- Colour: bright white or black
- Outer casing: ABS
- PCB-FR4

1 | 2 | 3 | 4 | 5 | 6



14	BAG	PE	8X12.5
13	CABLE TIE	Nylon	2.5x80
12	Spring	stainless steel	
11	IPC HOUSING	PC	4PIN W
10	IPC CONDUCTOR	PHOSPHOR COPPER	NICKEL PL
9	PCB	FR-4	1.6mm Thi
8	LABEL 2	Paper	17X12X0
7	LABEL 1	Paper	5.4X16.
6	COVER 2	PC	Transpa
5	COVER 1	ABS	WHITE (K
4	Shutter	ABS	WHITE (K
3	HOUSING 2	ABS	WHITE (K
2	HOUSING 1	ABS	WHITE (K
1	JACK	PBT	8PEC PDNT 2007
NO.	NAME	MATERIAL	SPECIFIC
APPD.			P/N.
CHKD.			FILE
DR.			TITLE

A1	Category 6 UTP module					TUK Ltd
EV.	DESCRIPTION	DATE	ENG.	APPROVAL		
1	2	3	4	5	6	

TUK Ltd, Unit 4, Wimbledon Stadium Business Centre, Riverside Road, London, SW17 0BA

Tel: 020 8946 6688 Fax: 020 8879 7410 Email: sales@tuk.co.uk Website: www.tuk.co.uk

X-ON Electronics

Largest Supplier of Electrical and Electronic Components

Click to view similar products for [Modular Connectors / Ethernet Connectors](#) category:

Click to view products by [Tuk](#) manufacturer:

Other Similar products are found below :

[RJE231881317T](#) [MP1010RX-1000](#) [MP44RX-1000](#) [GAX-3-66](#) [GAX-8-62](#) [93606-0253](#) [GD-A-44](#) [GDCX-PA-66-50](#) [GDCX-PN-64](#) [GDCX-PN-66](#) [GDCX-PN-66-50](#) [GDLX-A-66](#) [GDLX-A-88](#) [GDLX-N-66](#) [GDLX-S-88K](#) [GDTX-S-88-50](#) [GDX-PA-1010](#) [GLX-N-1010M-BLK](#) [GLX-N-44M](#) [GLX-S-88M-BLK](#) [GMX-N-1010](#) [GMX-S-1010](#) [GMX-S-66](#) [GMX-SMT2-N-1010](#) [GMX-SMT2-N-64-50](#) [GMX-SMT2-S6-88](#) [GMX-SMT4-N-88](#) [GPX-2-64](#) [GRT1-BT1-5](#) [GSGX-N-2-88](#) [GSX-NS2-88-3.05](#) [GSX-NS2-88-3.05-50](#) [GSX-NS-88-3.05-30](#) [GSX-NS-88-3.05-50](#) [GSX-NS-88-3.68](#) [1-1775629-2](#) [GWLX-S-88-GR](#) [GWLX-S9-88-YG](#) [1300500326](#) [1300500227](#) [1300530003](#) [1300570002](#) [1324640-4](#) [RJ11FTVC2G](#) [RJ11FTVC2N](#) [RJFTVX2SA1G](#) [132764-001](#) [1400000](#) [1413176](#) [1413235](#)