

Category 6A Shielded Keystone Panel Mount Coupler



Category 6A Shielded Keystone Panel Mount Coupler (SGACK2S, SGACK2S-24)

Features

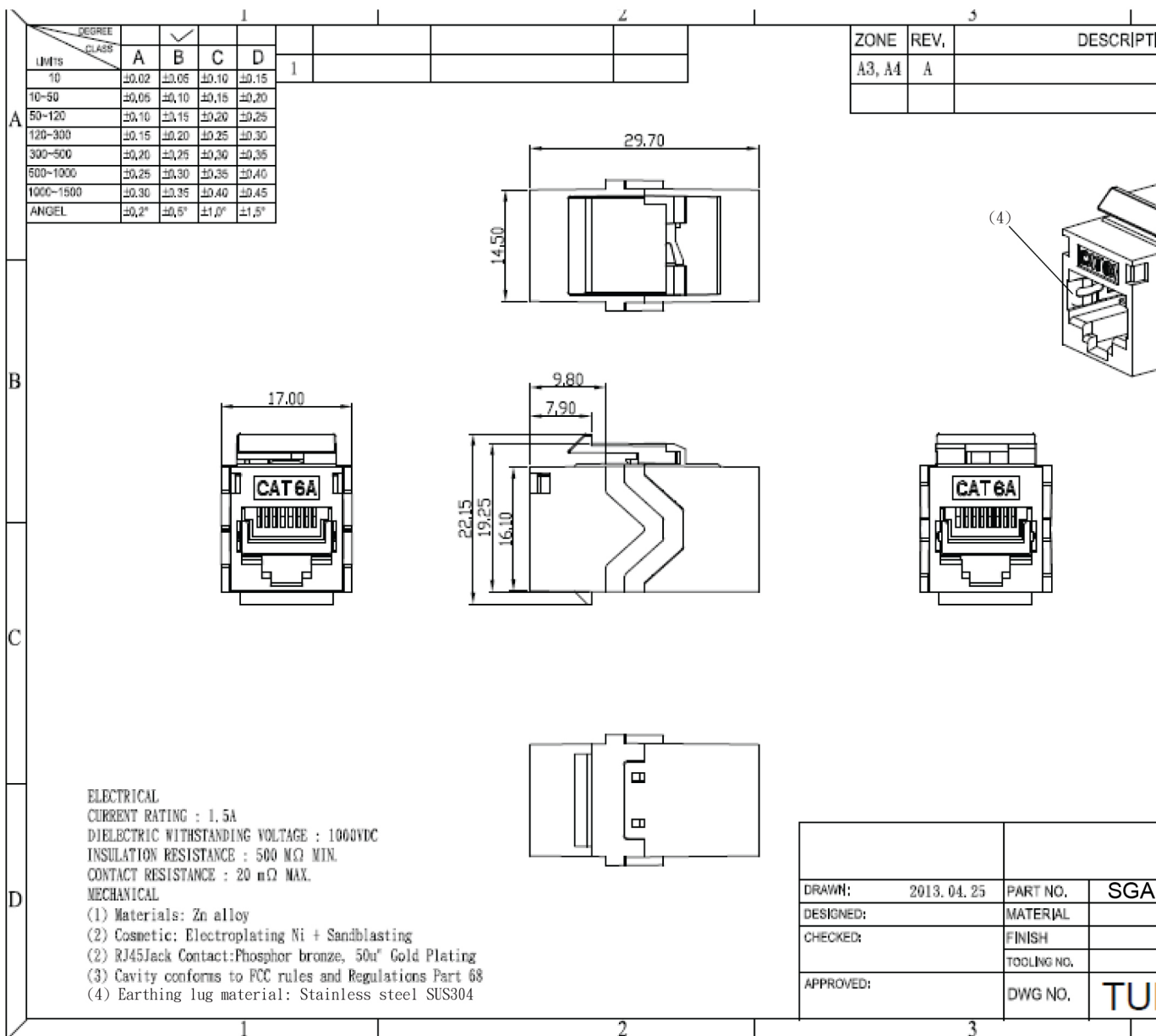
- Designed to fit US industry standard keystone outlets, wall plates and patch panels
- RJ45 complies with FCC part 68 standard
- Jack insertion life > 750 mating cycles
- Operating temperature: -40°C ~ +60°C
- High performance data throughput Category 6A, ANSI/TIA/EIA-568-B.2-10 – can run 10GBASE-T at 100 metres
- Available as part of our innovative Panel Mount and D UNIVERSAL ranges

Packaging

- Standard product is supplied in individual polythene bags. To save time for panel assemblers, SGACK2S-24 is available as a “bulk-pack” of 24 pieces without individual bags.

Specifications

- **Materials**
 - Housing: Nickel plated zinc alloy
 - Earthing lug material: Stainless steel SUS304
 - Contacts: 50µ"/1.27µm gold plated over nickel over phosphor bronze
- **Weight:**
 - SGACK2S: 17g
 - SGACK2S-24: 410g
- **Dimensions:**
 - SGACK2S: 29.7 x 17 x 16.1 mm approx.
 - SGACK2S-24: 282 x 70 x 35mm approx.



X-ON Electronics

Largest Supplier of Electrical and Electronic Components

Click to view similar products for [tuk](#) manufacturer:

Other Similar products are found below :

[SP1YW](#) [SP0.5BL](#) [FJKPT](#) [SKMCBKDPM](#) [PXCAT6S8XL2](#) [OT45BK](#) [SP10GN](#) [SKFYW](#) [TSY](#) [PXSPDY6S#100](#) [PSPDY5#100](#) [PSDL-6#20](#)
[WJOL](#) [F78BKB](#) [FACK2BKDPM](#) [FJP2](#) [SKFBKDPM](#) [SPDL5BK](#) [SP10BK](#) [SKH1LJ](#) [PXSPDY5#10](#) [PSDL-5#100](#) [WJSG](#) [FJ445](#) [SP2GN](#)
[SLJBKDPM](#) [SILS](#) [SP5GN](#) [SGPZ10BK](#) [SGACK2SPM](#) [MGOP6](#) [PXSPDY6#10](#) [TRCSPDY3](#) [SKH4](#) [SGKSSU-45WH](#) [SP10BL](#) [SGPZ3BK](#)
[ADF](#) [CPR2](#) [SEKEI-45WH](#) [SGKH2](#) [TRCSPDYBP](#) [SP10YW](#) [KPJ2BK](#) [KH2](#) [KOCSM](#) [KPH1BK](#) [PXSPDY6#100](#) [KOCSMDPM](#) [SP1BK](#)