

Data Sheet



SCA830-D06 1-AXIS HIGH PERFORMANCE ACCELEROMETER WITH DIGITAL SPI INTERFACE

Features

- 3.3V supply voltage
- ± 2 g measurement range
- Single axis measurement in Y direction
- ± 50 mg offset accuracy over temp range
- Internal temperature sensor
- SPI digital interface
- Enhanced self diagnostics features
- Size 7.6 x 3.3 x 8.6 mm (w x h x l)
- Qualified according to the AEC-Q100 standard
- Package, pin-out and SPI protocol compatible with Murata digital accelerometer product family
- RoHS compliant Dual Flat Lead (DFL) plastic package suitable for lead-free soldering process and SMD mounting
- Proven capacitive 3D-MEMS technology

Applications

The SCA830-D06 is targeted to automotive applications. Typical applications include

- Hill Start Aid (HSA)
- Electronic Parking Brake (EPB)
- Roll Over detection
- Suspension control
- Motion and position measurements

General Description

The SCA830-D06 is a single axis inclinometer component based on Murata's capacitive 3D-MEMS technology. The component integrates high accuracy micromechanical acceleration sensing together with a flexible SPI digital interface. Dual Flat Lead (DFL) housing guarantees reliable operation over product lifetime.

The SCA830-D06 is designed, manufactured and tested for high stability, reliability and quality requirements of automotive applications. The inclinometer has an extremely stable output over wide ranges of temperature, humidity and mechanical noise. The component is qualified to the AEC-Q100 standard and has several advanced self diagnostics features. The DFL housing is suitable for SMD mounting and the component is compatible with the RoHS and ELV directives.

The SCA830-D06 is a part of Murata's digital accelerometer family and fully compatible with its multi axis accelerometers (SCA2100 series and SCA3100 series) and other single axis accelerometers (SCA800 series).

Performance Characteristics

V_{dd}=3.3 V and ambient temperature unless otherwise specified.

| Parameter | Condition | | | | Units |
|--|---------------------------------------|-------------------|-------------------|------------------|---------|
| | | Min | Typ ^{A)} | Max | |
| Analog and digital V _{dd} | | 3.0 | | 3.6 | V |
| Current consumption | Active mode | | 5 | 6.3 | mA |
| | Power down mode | | | 0.1 | mA |
| Measurement range | Measurement axes (Y) | -2 | | 2 | g |
| Operating temperature | | -40 | | 125 | °C |
| Offset total error ^{B)} | Temperature range -40 ... +125 °C | -70 | | 70 | mg |
| Offset calibration error ^{C)} | @25 °C ±5°C | -40 | ±25 | 40 | mg |
| Offset temperature drift | Temperature range -40 ... +125 °C | -30 ^{D)} | ±22 ^{E)} | 30 ^{D)} | mg |
| | Temperature range -20 ... +85 °C | | ±13 | | mg |
| Sensitivity | 12 bit output | | 900 | | Count/g |
| | Between ±3° | | 0.0637 | | °/Count |
| Total sensitivity error | Temperature range -40 ... +125 °C | -4 | | 4 | % FS |
| Sensitivity calibration error | @25 °C ±5°C | | ±1 | | % FS |
| Sensitivity temperature drift | Temperature range -40 ... +125 °C | | ±1 | | % FS |
| Linearity error | +1g ... -1g range, end point fit | -20 | | 20 | mg |
| | +2g ... -2g range, end point fit | -40 | | 40 | mg |
| Cross-Axis sensitivity | | | | ±3.5 | % |
| Zero acceleration output | 2-complement | | 0 | | Counts |
| Amplitude response | -3dB frequency | 30 | | 80 | Hz |
| Noise | | | | 5 | mg RMS |
| Power on setup time | | | | 0.1 | s |
| Output data rate | | | 2000 | | Hz |
| Output load | | | | 50 | pF |
| SPI clock rate | | | | 8 | MHz |
| ESD | Human Body Model | | | 2 | kV |
| | Charge Device Model | | | 1 | kV |
| Solderability | IPC/JEDEC J-STD-020C, +245 °C, 40 s | | | | |
| Moisture level | IPC/JEDEC J-STD-020C, Level 3 | | | | |
| Mechanical shock | | | | 20 000 | g |
| ID register value | Customer readable ID register (27hex) | | 05 | | |

A) Typical ± values are ±3 sigma variation limits from validation test population.

B) Includes offset deviation from 0g value including calibration error and drift over lifetime, temperature and supply voltage.

C) Includes offset deviation from 0g value including calibration error and drift over lifetime.

D) Offset drift due to temperature. Value is a relative value and has been centered to zero. Error defined as maximum change of offset in temperature range. Offset (max)-Offset (Min). 100% tested in production.

E) Biggest change of output from RT value due temperature.

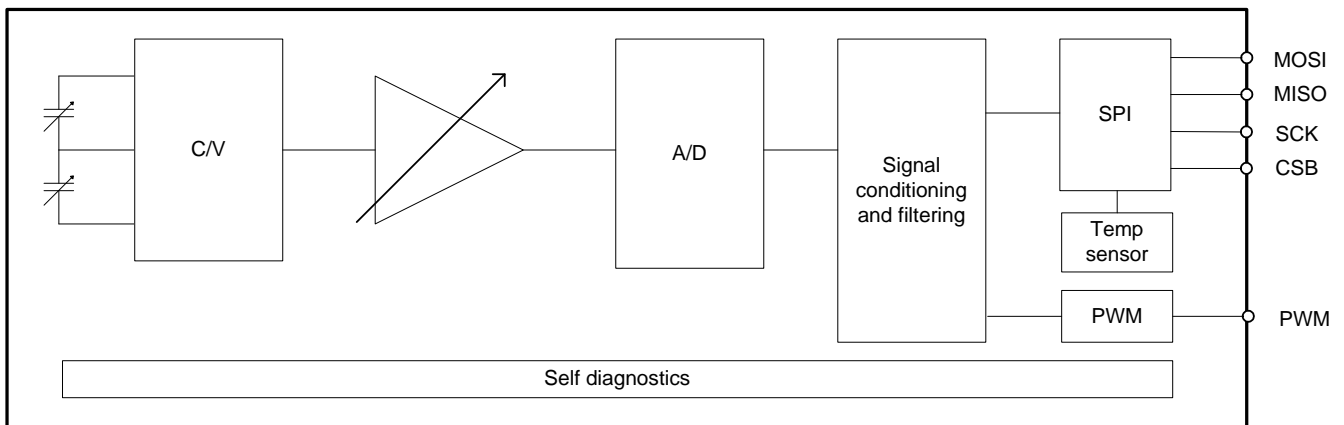
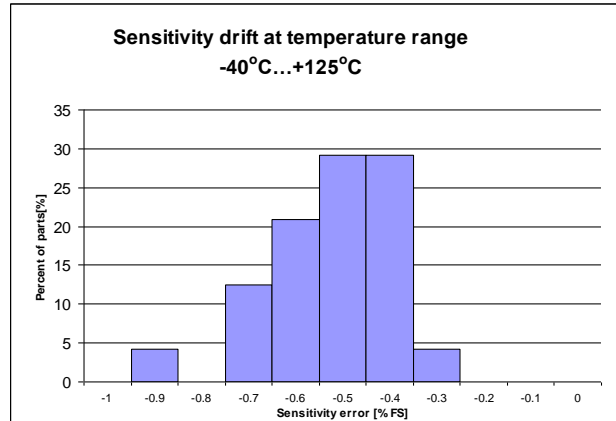
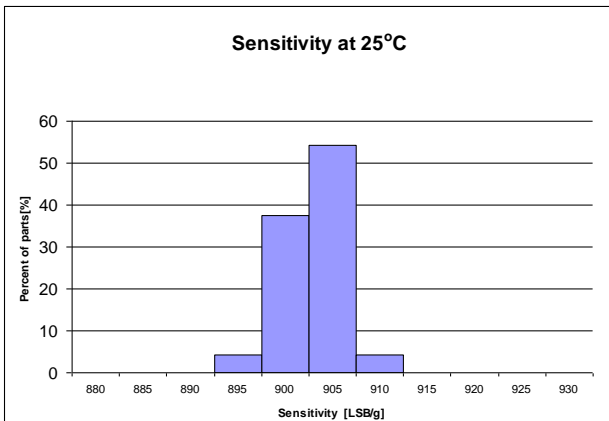
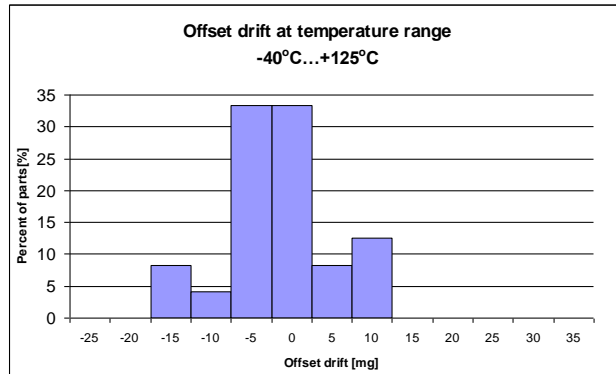
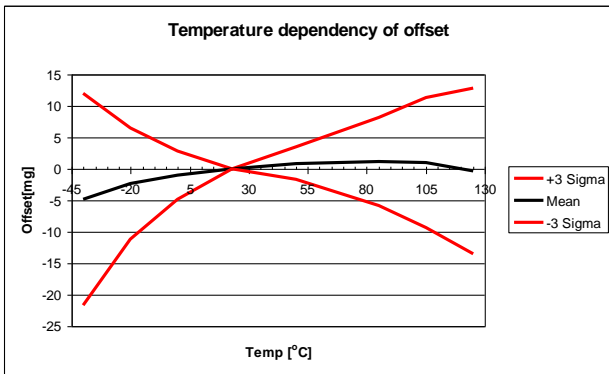
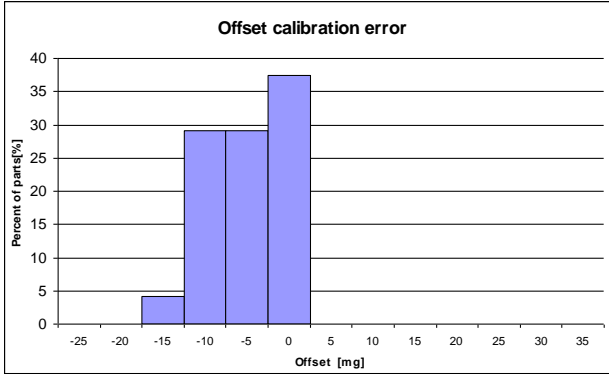


Figure 1. SCA810-D02 Block diagram

Typical Performance characteristics



Measurement directions

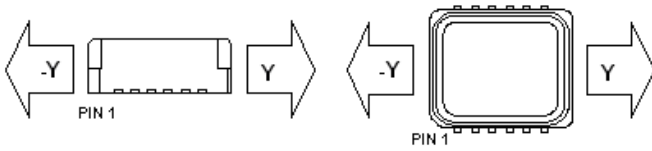


Figure 1. Accelerometer measuring directions

Housing dimensions

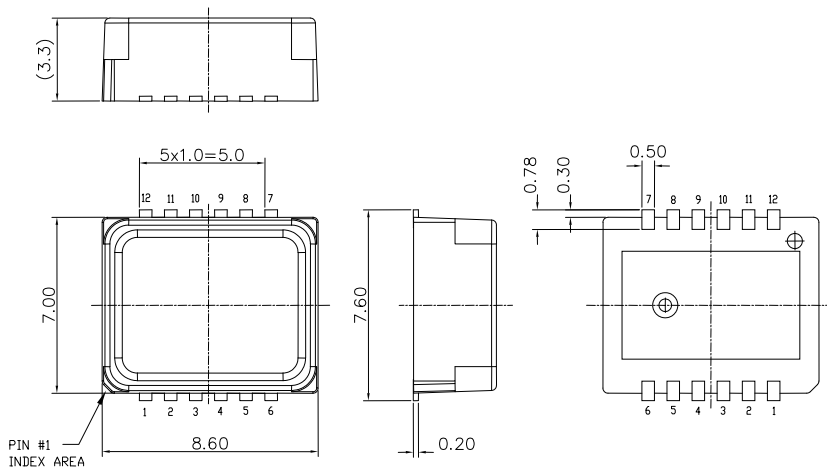


Figure 2. Housing dimensions

X-ON Electronics

Largest Supplier of Electrical and Electronic Components

Click to view similar products for [murata](#) manufacturer:

Other Similar products are found below :

[786028C](#) [MGJ1D121905MPC-R7](#) [MGJ2D051515SC](#) [82103C](#) [82224C](#) [82473C](#) [GCM32EC71H106MA03L](#) [GRM2165C1H101FA01D](#)
[PTGL09AS2R2K3B51B0](#) [11R683C](#) [DD1274AS-H-220M=P3](#) [DFE252012P-1R0M=P2](#) [BPM15-120-Q12P-C](#) [NMK1212SC](#) [NMV1212DAC](#)
[LQH43MN330J03L](#) [GRM1885C1H150FA01J](#) [GRM21BR71C475KE51L](#) [GRM3195C2A471JD01D](#) [GRM31CR61A475KA01L](#) [RF1211C](#)
[MGJ2D121509SC](#) [MGJ6D122005LMC-R7](#) [#B953AS-330M=P3](#) [BLM18AG601SN1J](#) [HN-214](#) [HN-214X](#) [TZ03P450](#) [UEE-12/12.5-D48NB-C](#)
[LBWB1ZZYDZ-DTEMP-SNIC-UART-A](#) [LLM315R70J225MA11L](#) [46334C](#) [DR4103](#) [SCA830-D07-PCB](#) [NKE1212DC](#) [NMA1215SC](#)
[UVQ-48/2.5-D24PB-C](#) [RDE5C1H472J1M1H03A](#) [IML-0642](#) [HPR105C](#) [HPQ-12/25-D48PB-C](#) [UWS-5/10-Q48N-C](#) [UWR-5/2000-D24E-C](#)
[19R683C](#) [UHE-152000-D24-C](#) [782485/35C](#) [UEI-3.3/15-Q12PR-C](#) [MGJ2D122005SC](#) [MEV1S0505SC](#) [MEMS-EVAL-BOARD](#)