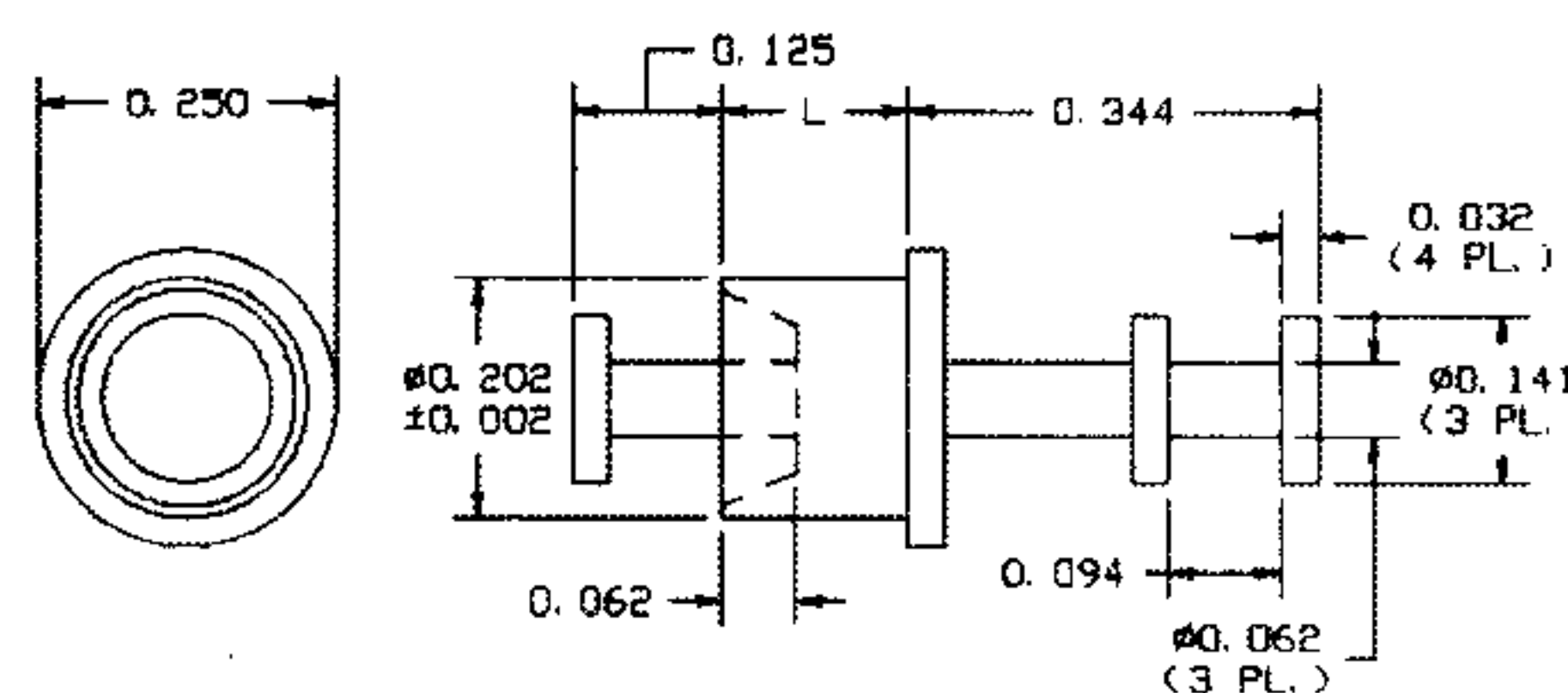


TERMINALS

09-0033-X-05

MATERIAL: BRASS
FINISH: ELECTRO-SOLDER

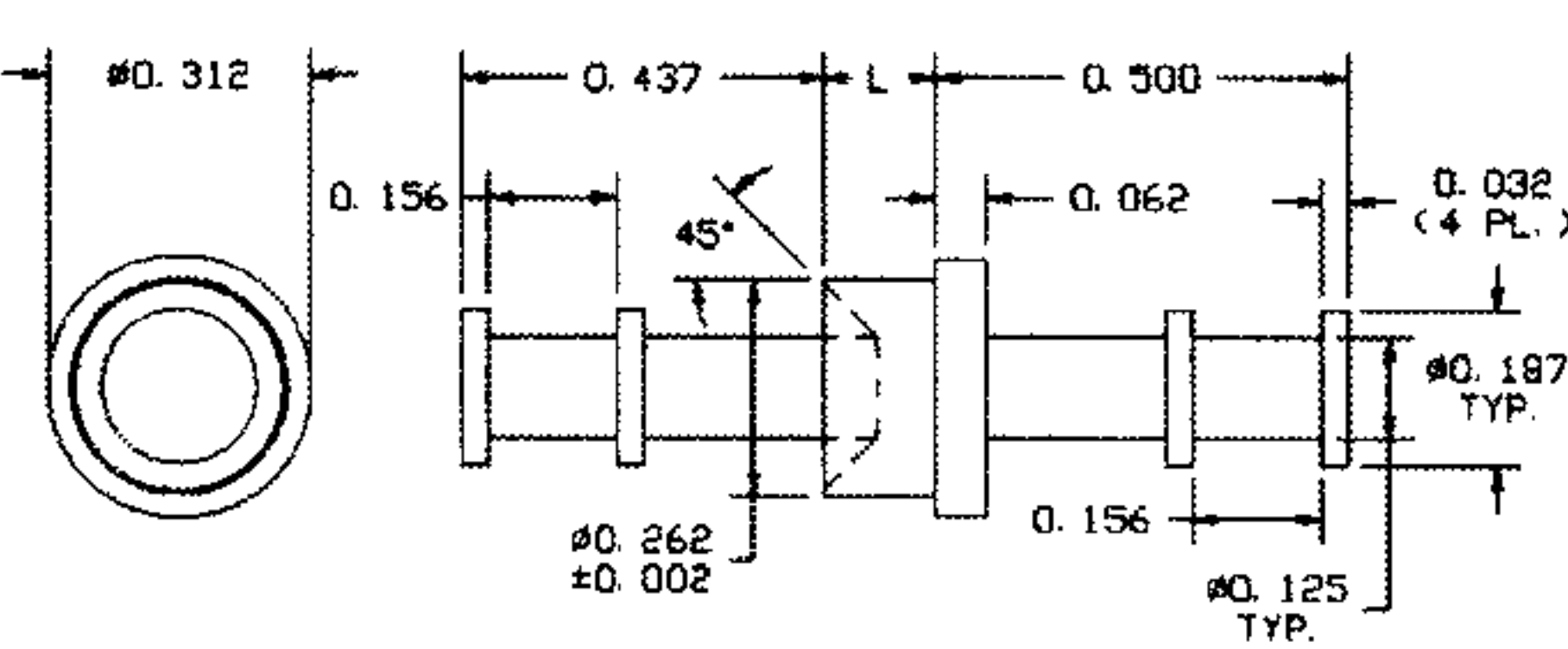


RECOMMENDED MOUNTING HOLE .206 DIA. (#5 DRILL)

PART NO.	L	T	TOOLS	
09-0033-1	.094	1/16	ANVIL	PUNCH
09-0033-2	.125	3/32	TA250-141-32	TP202-T141
09-0033-3	.156	1/8		

13-520-X-01

MATERIAL: BRASS
FINISH: SILVER

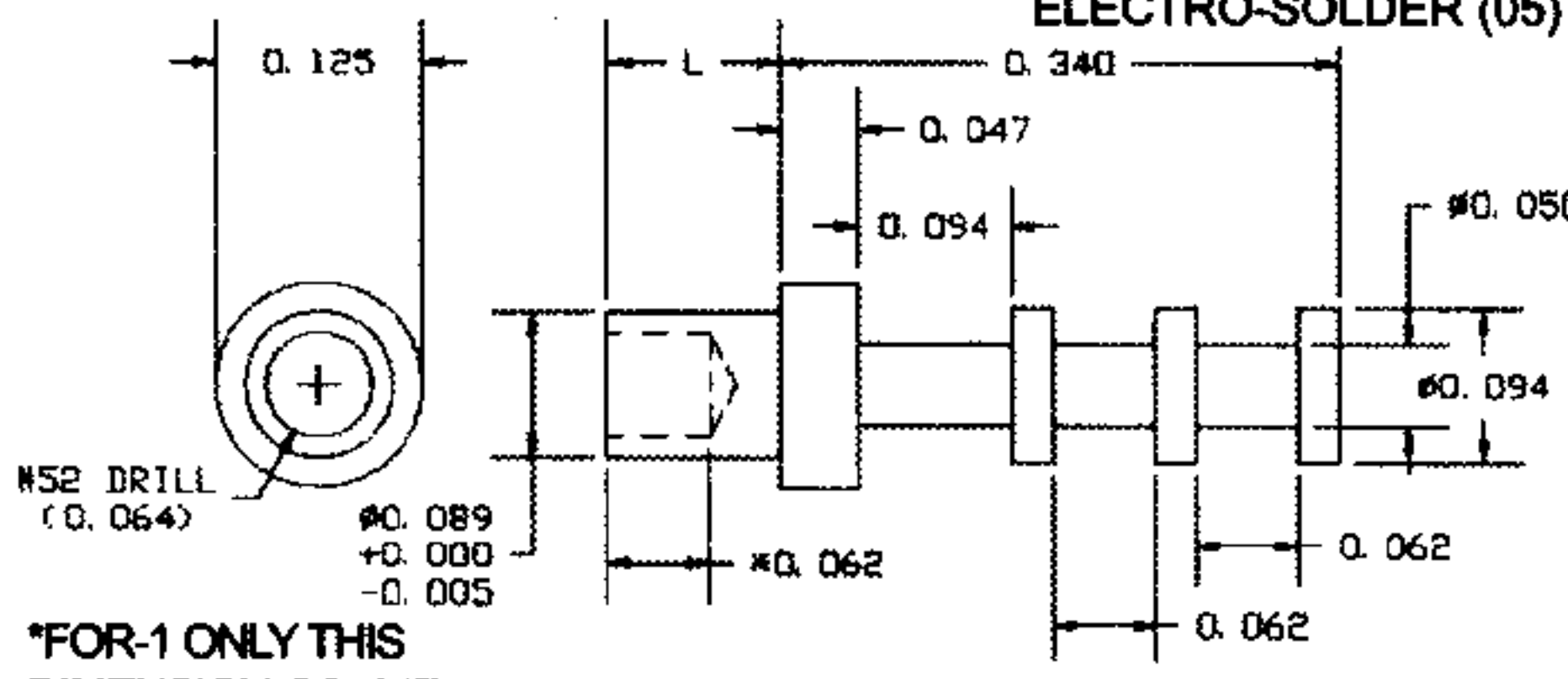


RECOMMENDED MOUNTING HOLE .266 DIA. (17/64 DRILL)

PART NO.	L	T	TOOLS	
13-520-2	.105	1/16	ANVIL	PUNCH
13-520-3	.135	3/32	TA312-187-60	TP262-T187
13-520-4	.165	1/8		
13-520-5	.195	5/32		
13-520-6	.230	3/16		
13-520-8	.293	1/4		

10-615-X-XX

MATERIAL: BRASS
FINISH: SILVER (01)
ELECTRO-SOLDER (05)



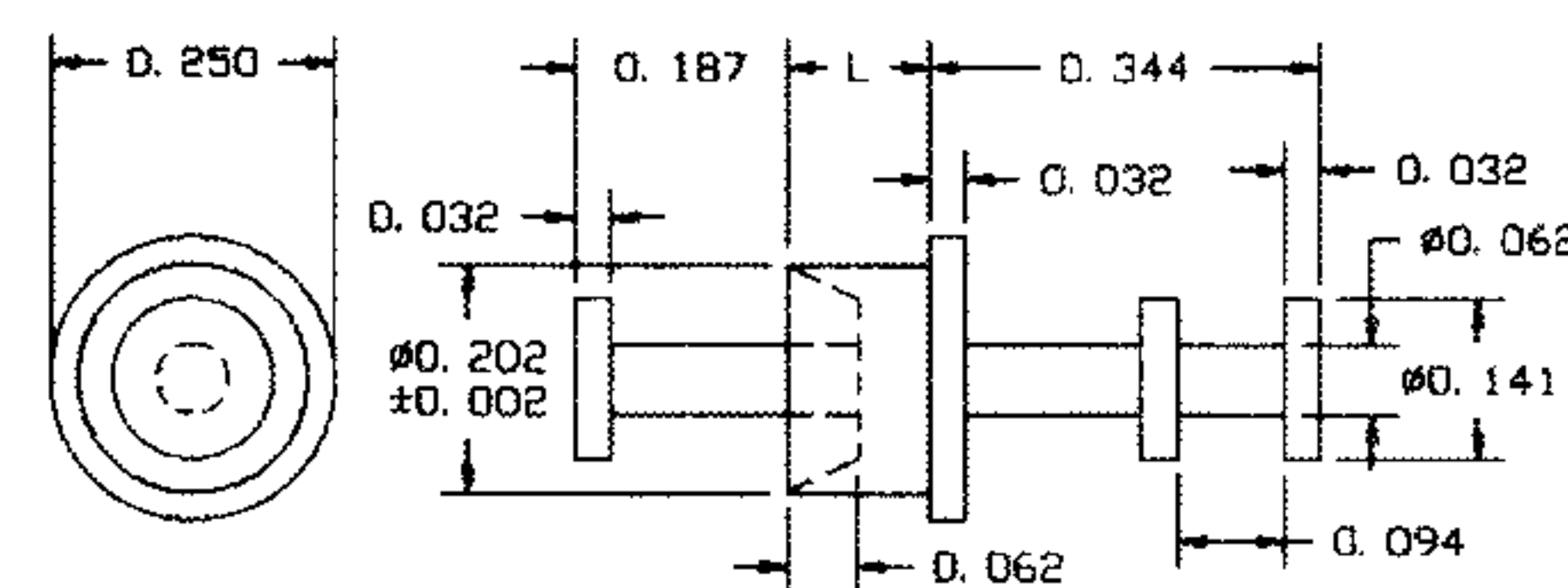
*FOR-1 ONLY THIS DIMENSION OS .047

RECOMMENDED MOUNTING HOLE .090 DIA. (#43 DRILL)

PART NO.	L	T	TOOLS	
10-615-1	.075	1/32	ANVIL	PUNCH
10-615-2	.105	1/16	TA125-94-23	TP90-64
10-615-3	.135	3/32		
10-615-4	.165	1/8		

10-526-X-01

MATERIAL: BRASS
FINISH: SILVER

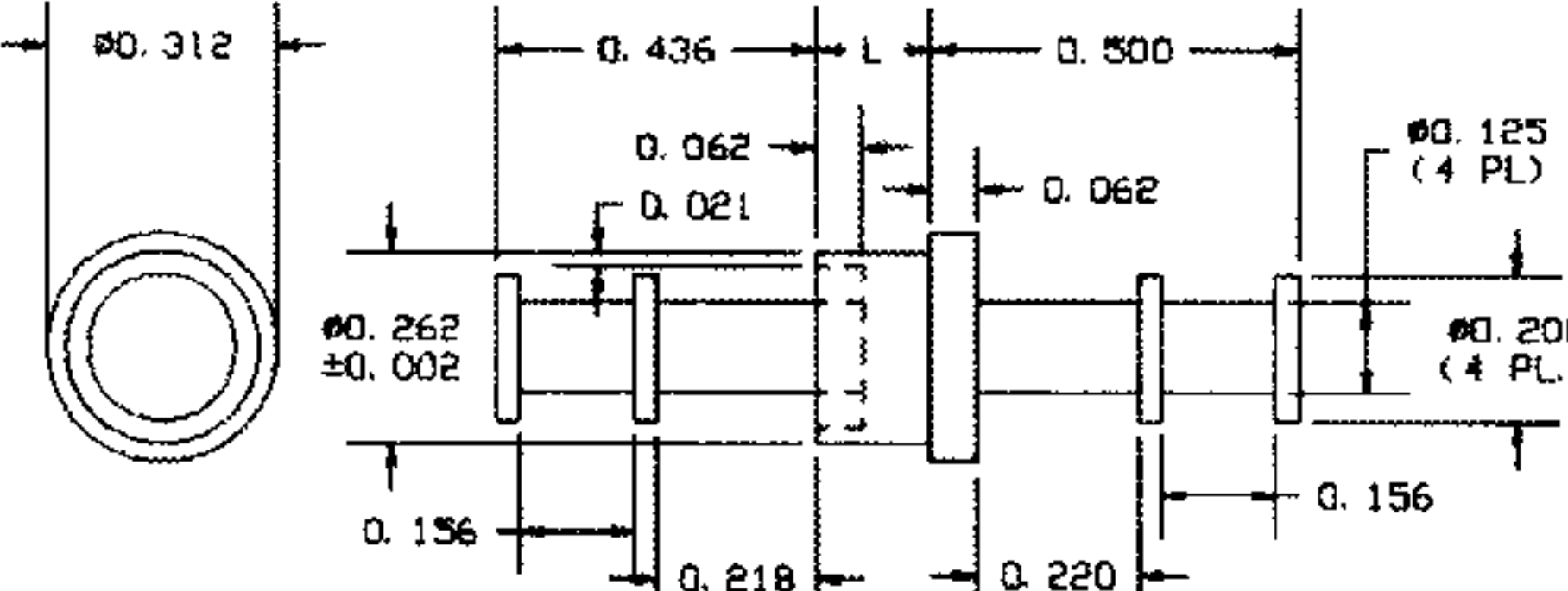


RECOMMENDED MOUNTING HOLE .206 DIA. (#5 DRILL)

PART NO.	L	T	TOOLS	
10-526-2	.094	1/16	ANVIL	PUNCH
10-526-3	.125	3/32	TA250-141-32	TP202-T141
10-526-4	.156	1/8		

10-519-X-01

MATERIAL: BRASS
FINISH: SILVER

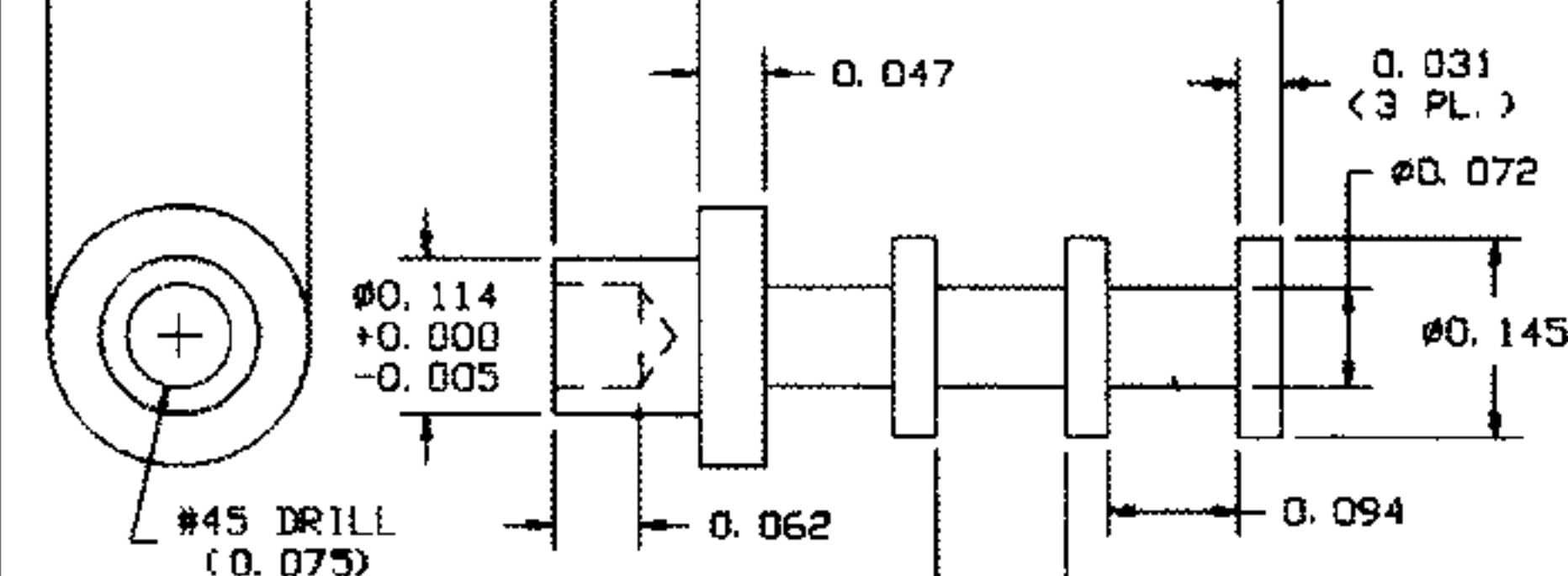


RECOMMENDED MOUNTING HOLE .266 DIA. (17/64 DRILL)

PART NO.	L	T	TOOLS	
10-519-2	.094	1/16	ANVIL	PUNCH
10-519-3	.125	3/32	TA312-200-62	TP262-T200
10-519-4	.156	1/8		
10-519-6	.219	3/16		
10-519-8	.281	1/4		

12-607-X-01

MATERIAL: BRASS
FINISH: SILVER

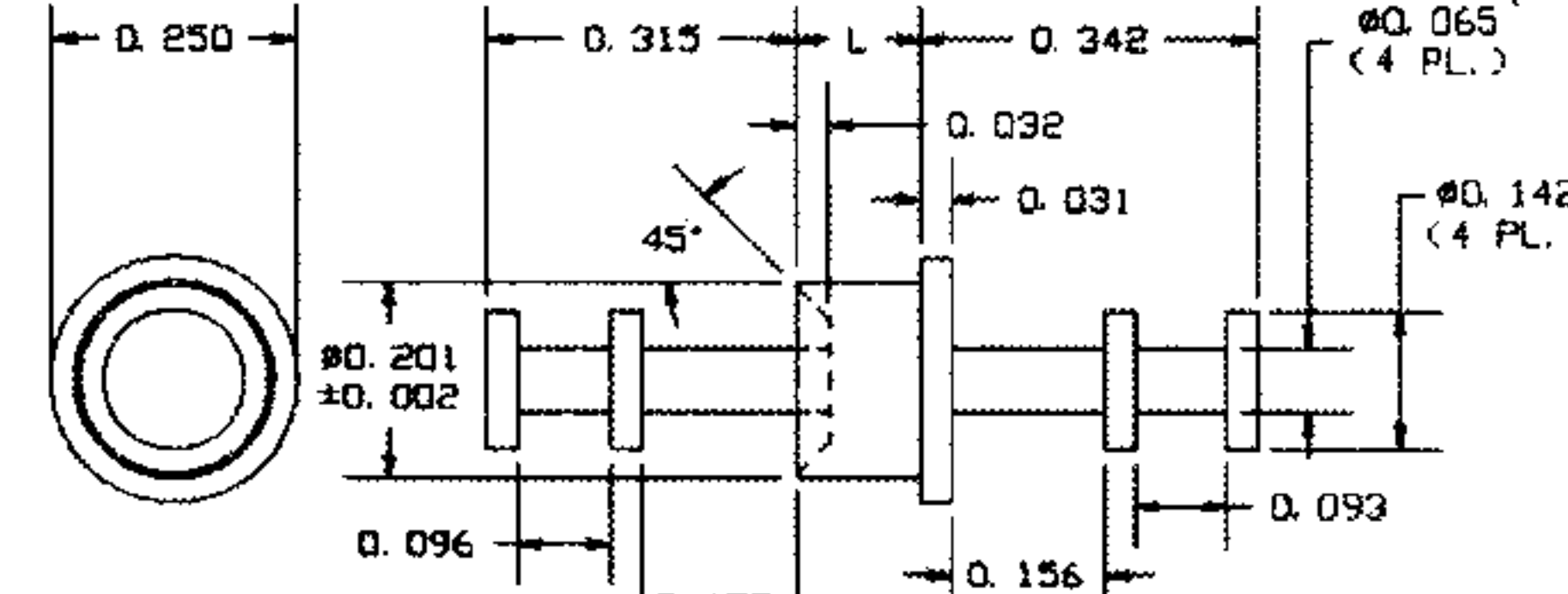


RECOMMENDED MOUNTING HOLE .116 DIA. (#32 DRILL)

PART NO.	L	T	TOOLS	
12-607-1	.075	1/32	ANVIL	PUNCH
12-607-2	.105	1/16	TA188-146-31	TP112-78
12-607-3	.135	3/32		
12-607-4	.165	1/8		

10-509-X-XX

MATERIAL: BRASS
FINISH: SILVER (01)
ELECTRO-SOLDER (05)

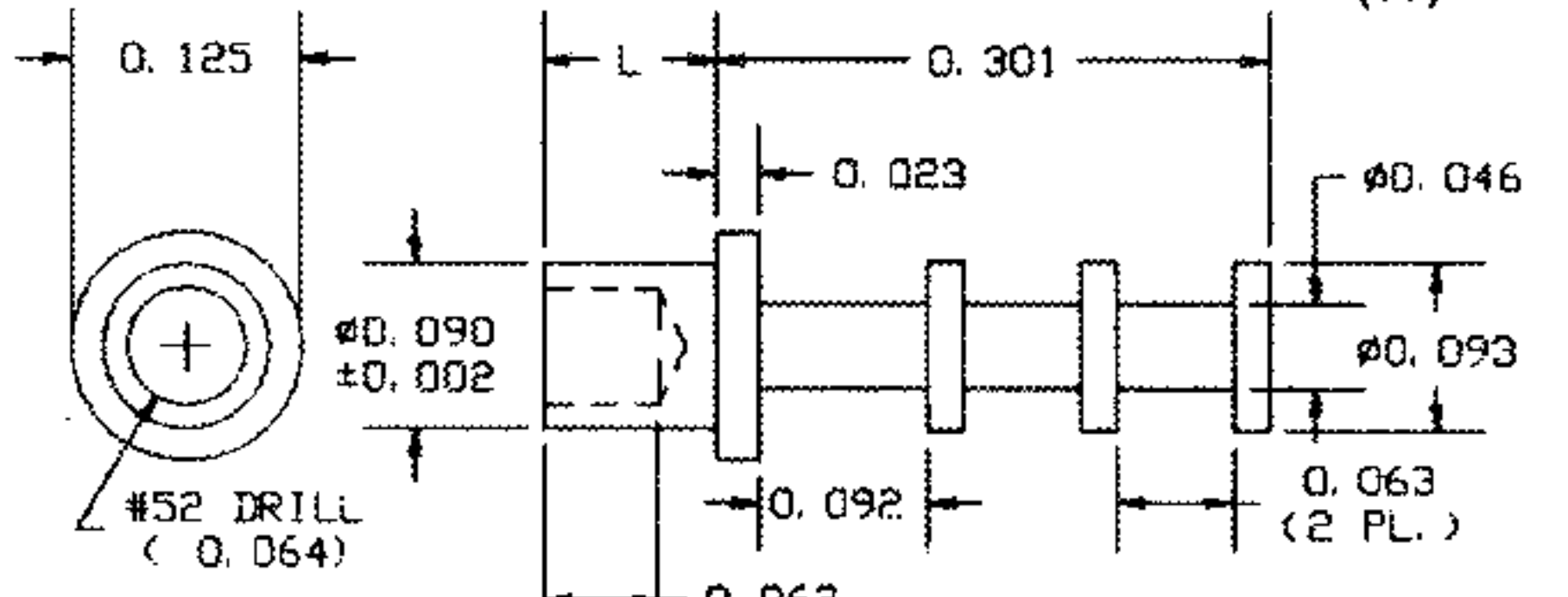


RECOMMENDED MOUNTING HOLE .204 DIA. (#6 DRILL)

PART NO.	L	T	TOOLS	
10-509-2	.094	1/16	ANVIL	PUNCH
10-509-3	.125	3/32	TA250-142-31	TP202-T141
10-509-4	.156	1/8		
10-509-6	.219	3/16		
10-509-8	.281	1/4		

10-601-X-XX

MATERIAL: BRASS
FINISH: SILVER (01)
GOLD (03)

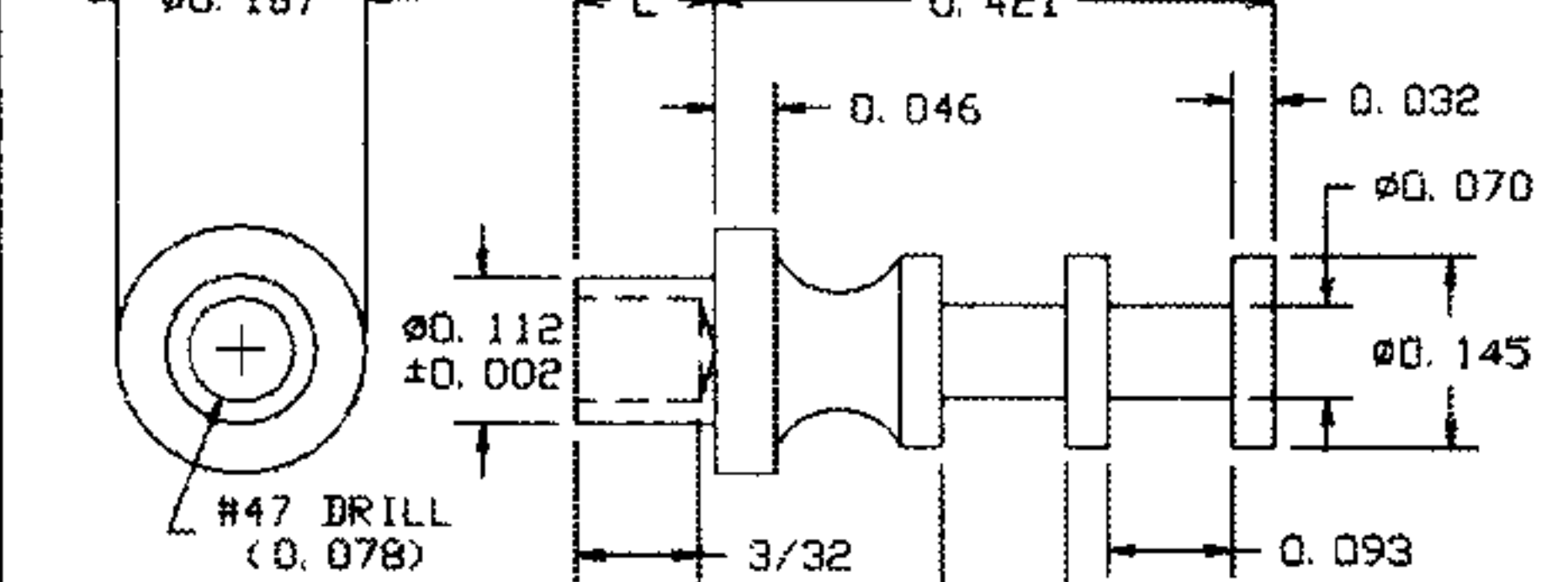


RECOMMENDED MOUNTING HOLE .094 DIA. (#42 DRILL)

PART NO.	L	T	TOOLS	
10-601-1	.062	1/32	ANVIL	PUNCH
10-601-2	.094	1/16	TA125-94-23	TP90-64
10-601-3	.125	3/32		
10-601-4	.156	1/8		
10-601-6	.219	3/16		

13-603-X-01

MATERIAL: BRASS
FINISH: SILVER

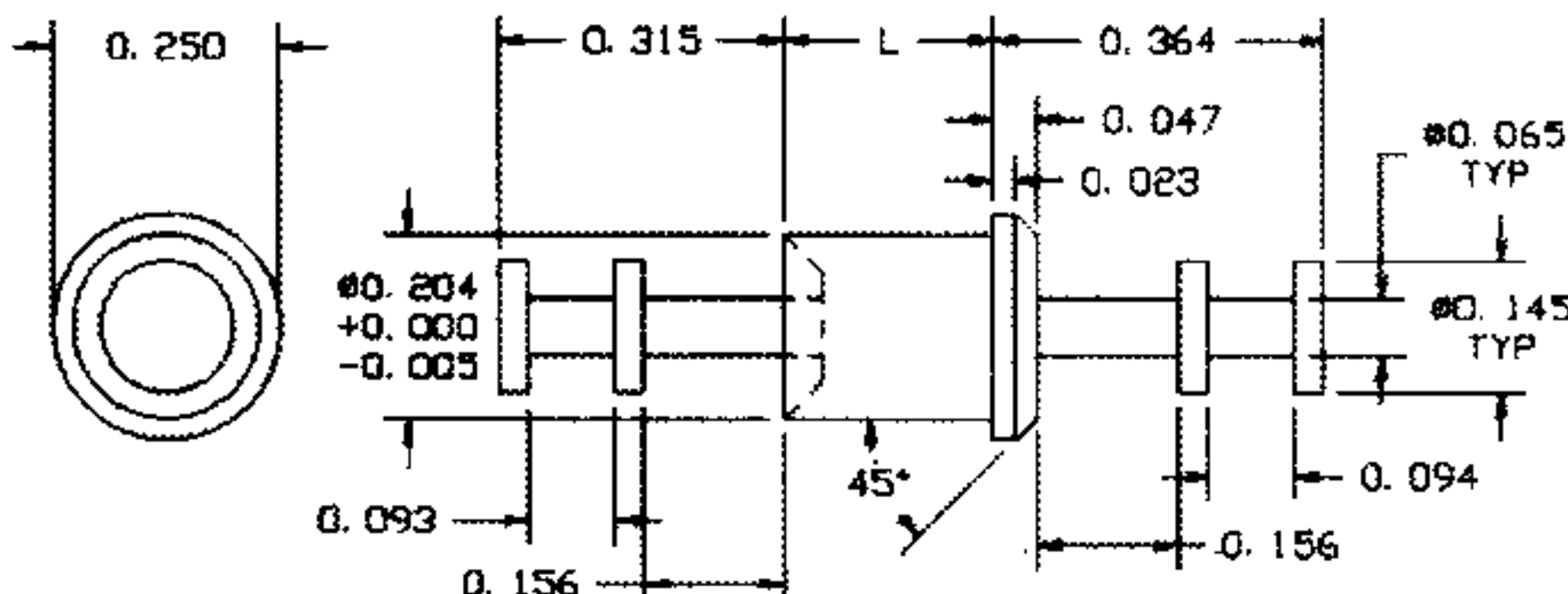


RECOMMENDED MOUNTING HOLE .116 DIA. (#32 DRILL)

PART NO.	L	T	TOOLS	
13-603-1	.075	1/32	ANVIL	PUNCH
13-603-2	.105	1/16	TA188-146-31	TP112-78
13-603-3	.135	3/32		
13-603-4	.165	1/8		

12-549-X-01

MATERIAL: BRASS
FINISH: SILVER

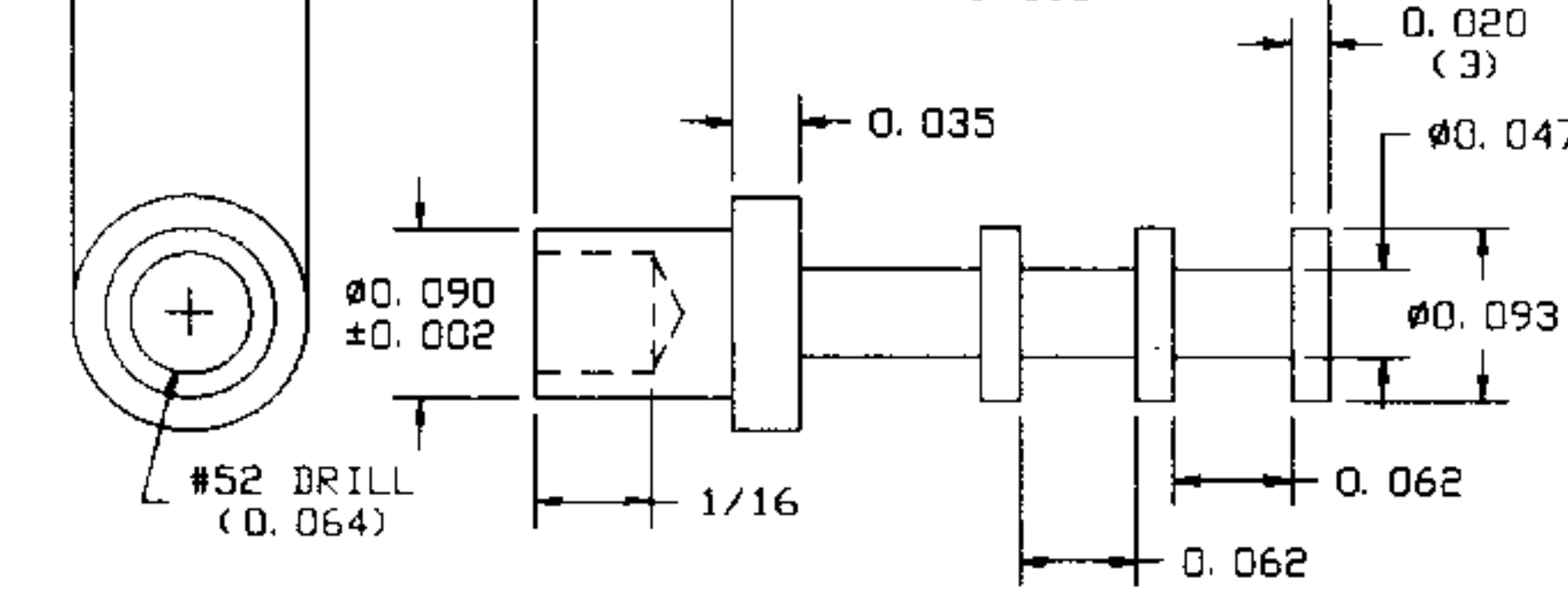


RECOMMENDED MOUNTING HOLE .206 DIA. (#5 DRILL)

PART NO.	L	T	TOOLS	
12-549-2	.105	1/16	ANVIL	PUNCH
12-549-3	.135	3/32	TA250-145-45	TP204-T145
12-549-4	.165	1/8		
12-549-5	.195	5/32		
12-549-6	.230	3/16		

13-606-X-01

MATERIAL: BRASS
FINISH: SILVER

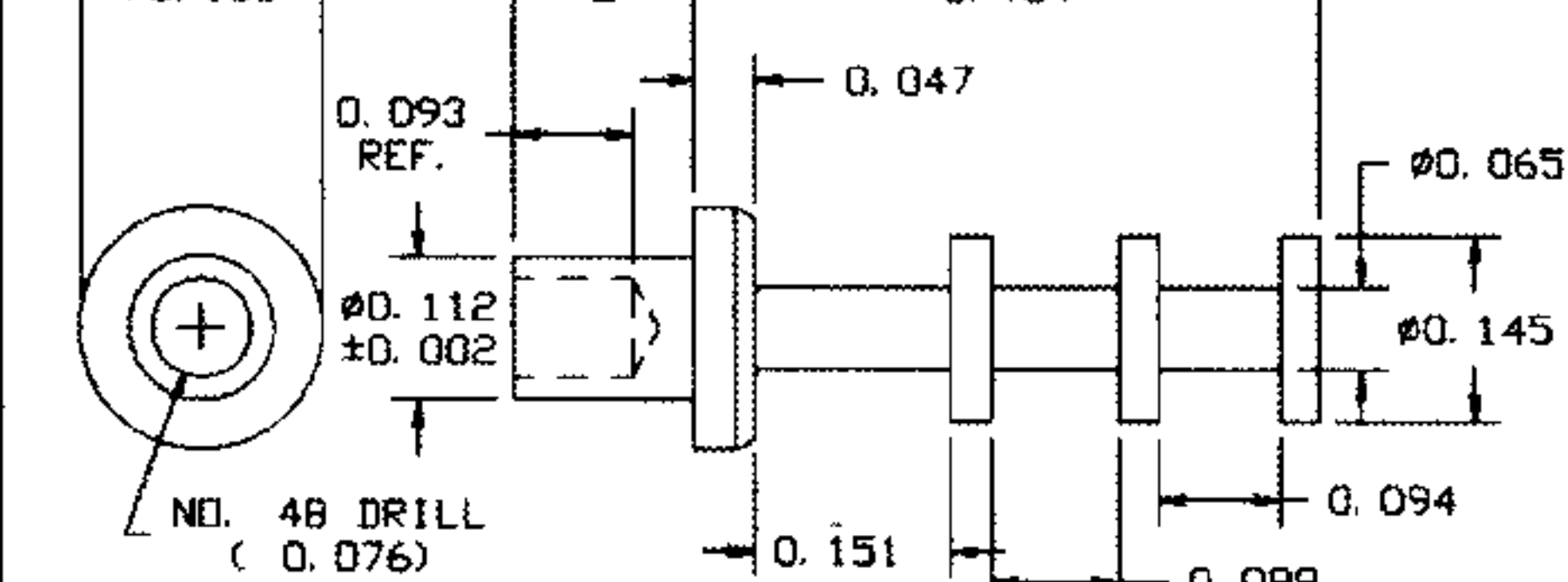


RECOMMENDED MOUNTING HOLE .094 DIA. (#42 DRILL)

PART NO.	L	T	TOOLS	
13-606-1	.075	1/32	ANVIL	PUNCH
13-606-2	.105	1/16	TA125-94-23	TP90-64
13-606-3	.135	3/32		
13-606-4	.165	1/8		

10-602-X-XX

MATERIAL: BRASS
FINISH: SILVER (01)
GOLD (03)

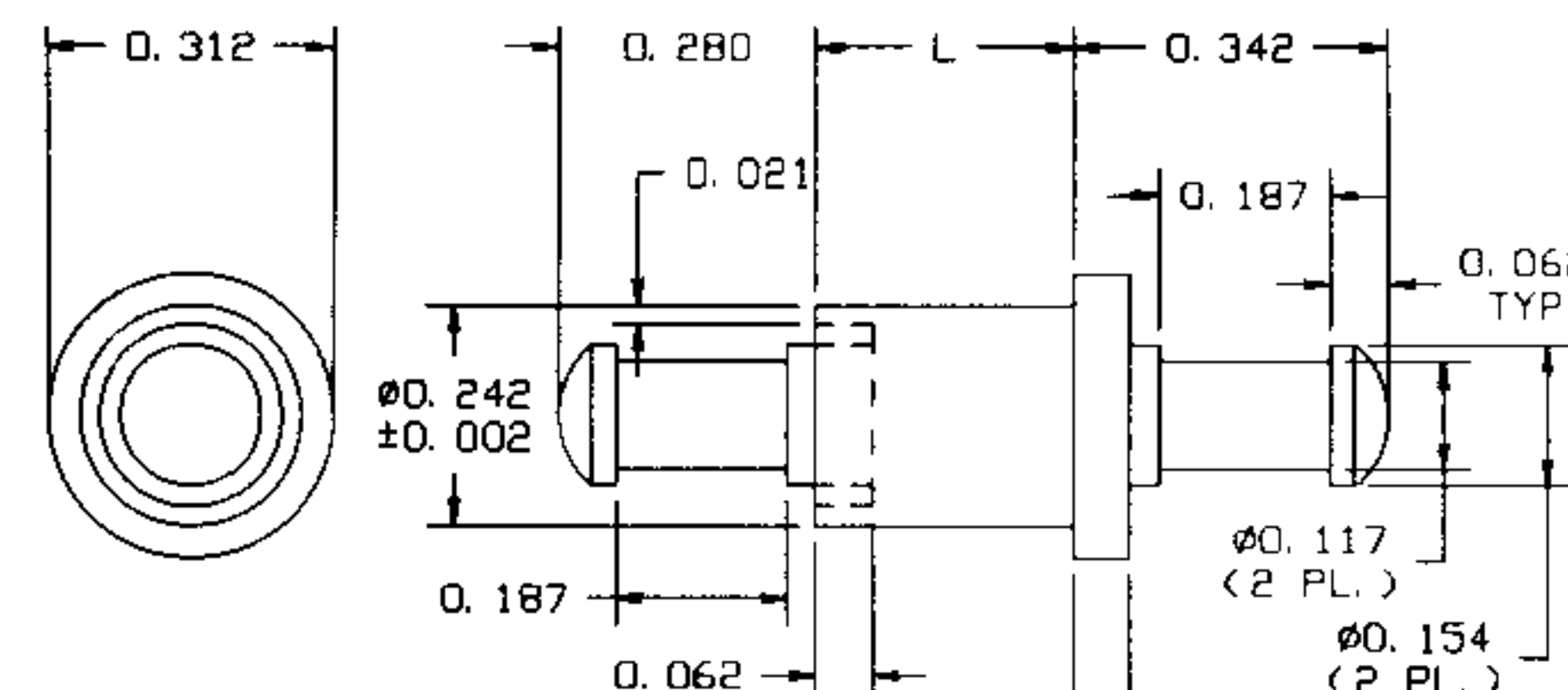


RECOMMENDED MOUNTING HOLE .116 DIA. (#32 DRILL)

PART NO.	L	T	TOOLS	
10-602-1	.078	1/32	ANVIL	PUNCH
10-602-2	.109	1/16	TA188-146-31	TP112-78
10-602-3	.141	3/32		
10-602-4	.172	1/8		
10-602-6	.234	3/16		
10-602-8	.297	1/4		

10-523-8-01

MATERIAL: BRASS
FINISH: SILVER

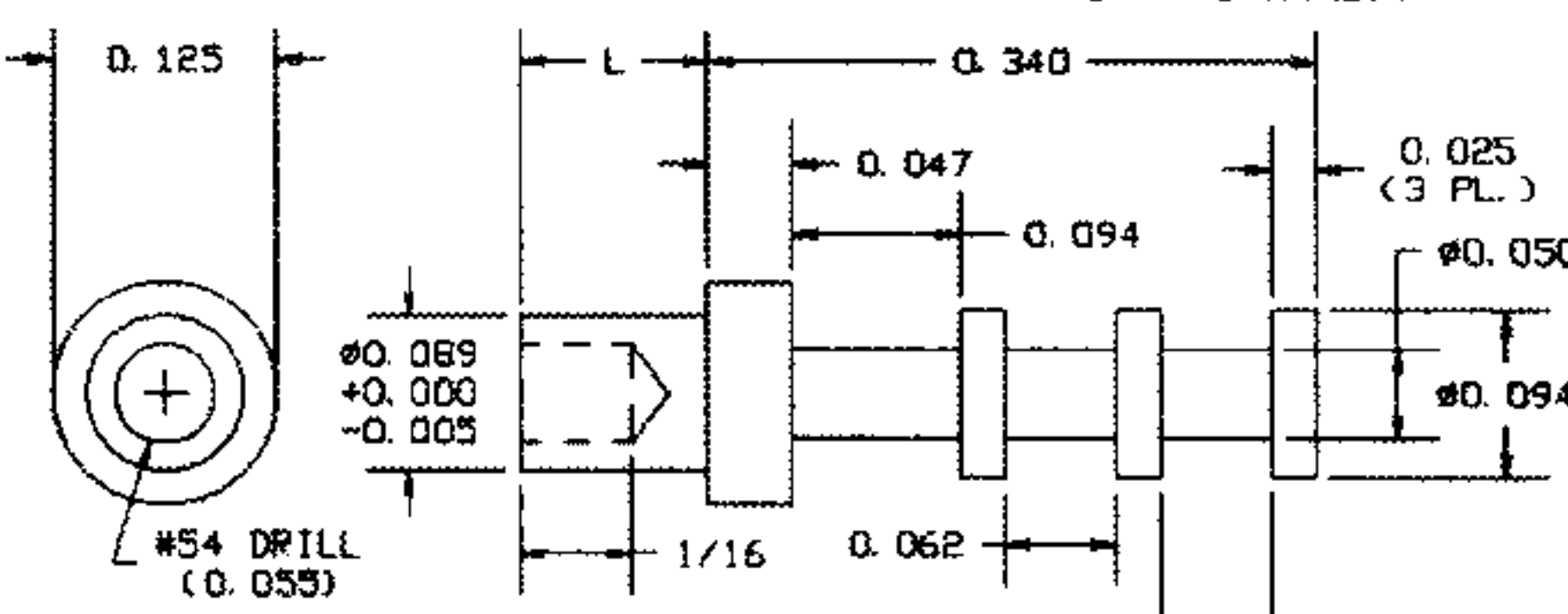


RECOMMENDED MOUNTING HOLE .246 DIA. (#D DRILL)

PART NO.	L	T	TOOLS	
10-523-8	.281	1/4	ANVIL	PUNCH
			TA312-154-60	TP242-T154

12-605-X-01

MATERIAL: BRASS
FINISH: SILVER

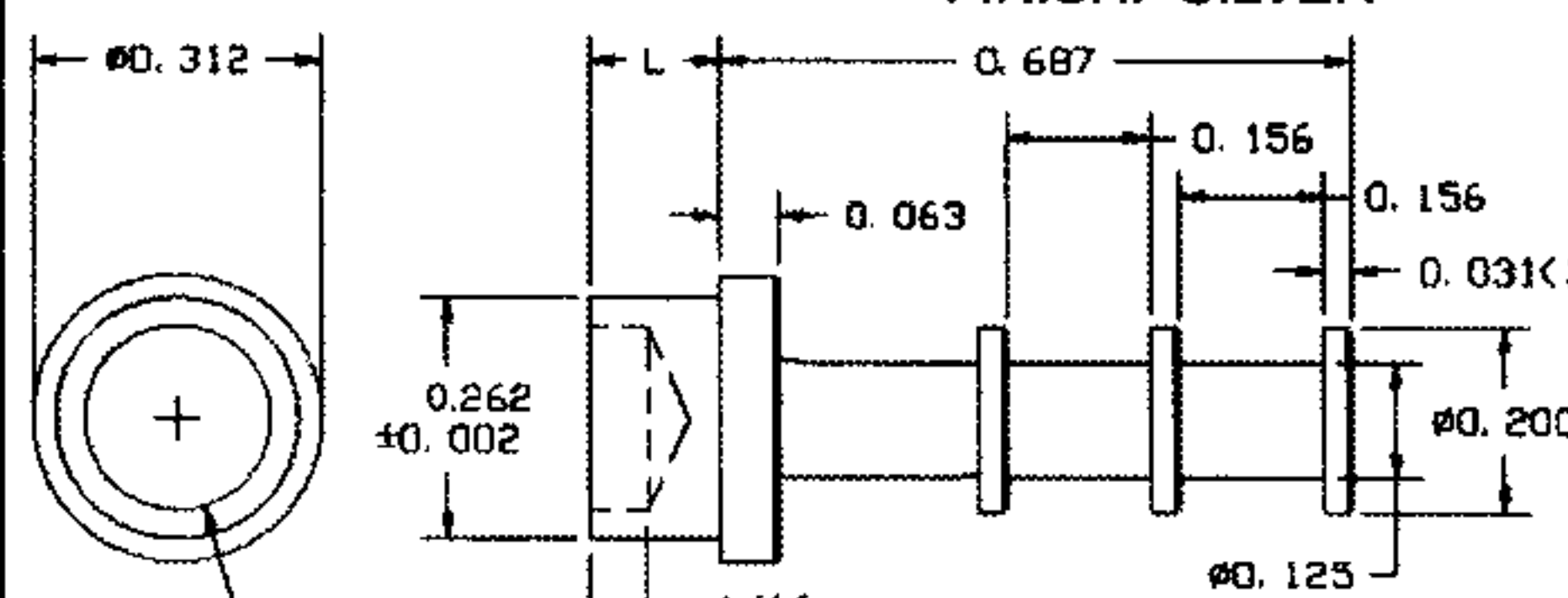


RECOMMENDED MOUNTING HOLE .090 DIA. (#43 DRILL)

PART NO.	L	T	TOOLS	
12-605-1	.075	1/32	ANVIL	PUNCH
12-605-2	.105	1/16	TA125-94-23	TP90-55
12-605-3	.135	3/32		
12-605-4	.165	1/8		

10-604-X-01

MATERIAL: BRASS
FINISH: SILVER



RECOMMENDED MOUNTING HOLE .266 DIA. (17/64 DRILL)

PART NO.	L	T	TOOLS	
10-604-2	.109	1/16	ANVIL	PUNCH
10-604-3	.141	3/32	TA312-200-62	TP262-201
10-604-4	.172	1/8		
10-604-6	.234	3/16		
10-604-8	.297	1/4		

FOR ADDITIONAL SIZES AND MATERIALS, CONTACT FACTORY

800-847-4162 (Outside N.Y.S.)
Ph: 212-777-6571 Fax: 212-991-0161
sales@concord-electronics.com
engineering@concord-electronics.com



X-ON Electronics

Largest Supplier of Electrical and Electronic Components

Click to view similar products for [Terminals](#) category:

Click to view products by [Concord](#) manufacturer:

Other Similar products are found below :

[HT-13-10](#) [71M-250-32-NB](#) [01-2065-1-0216](#) [00581P0075](#) [M10-10RX](#) [M10BCK](#) [60205-1](#) [604200-1](#) [60598-1-CUT-TAPE](#) [60617-1-C](#) [60873-1](#) [M14-516R/SK](#) [M14-6RSX](#) [M18-10FLX](#) [M18-8FBX](#) [M18-8R/LX](#) [M18BCK](#) [61314-6-C](#) [61-S](#) [61-SN-A](#) [62-NBM-A](#) [63-S](#) [640179-1](#) [640917-2-CUT-TAPE](#) [6501550002](#) [66107-2-C](#) [66107-4-C](#) [696683-1](#) [696834-1](#) [696861-1](#) [696931-1](#) [696999-1](#) [M8-516RK](#) [M86700006](#) [MA250DMFMX-A](#) [701-2007](#) [701-2307](#) [701-7761-03](#) [70F-110-32-PB](#) [718-N-A](#) [71M-187-20-NBL](#) [71M-250-32-NBL](#) [72F-187-20-NBL](#) [72M-250-32-NBL](#) [7310](#) [73F-250-32](#) [73F-250-32-NBL](#) [73F-250-32-NL](#) [F14-10C](#) [F-1M](#)