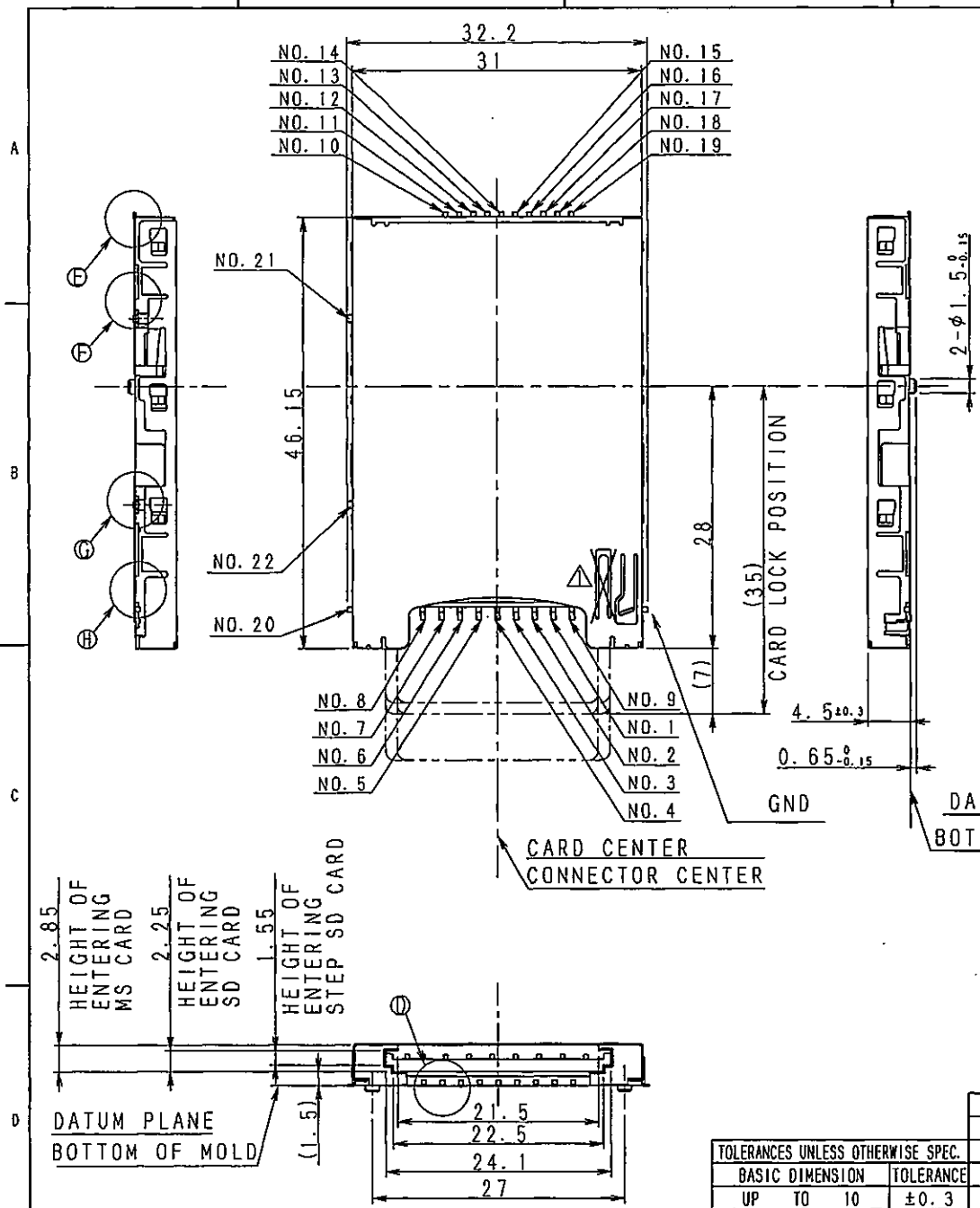


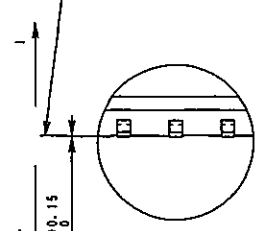
FOLD 5

BACK GROUND 背景
PP02098
MODIFIED ERROR

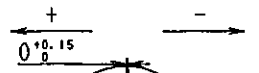
PRELIMINARY



DATUM PLANE
BOTTOM OF MOLD



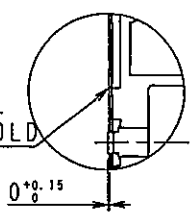
DETAILS OF ①



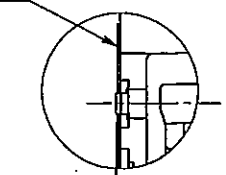
DETAILS OF ②

DATUM PLANE
BOTTOM OF MOLD

DATUM PLANE
BOTTOM OF MOLD

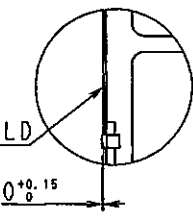


DETAILS OF ③



DETAILS OF ④

DATUM PLANE
BOTTOM OF MOLD



DETAILS OF ⑤

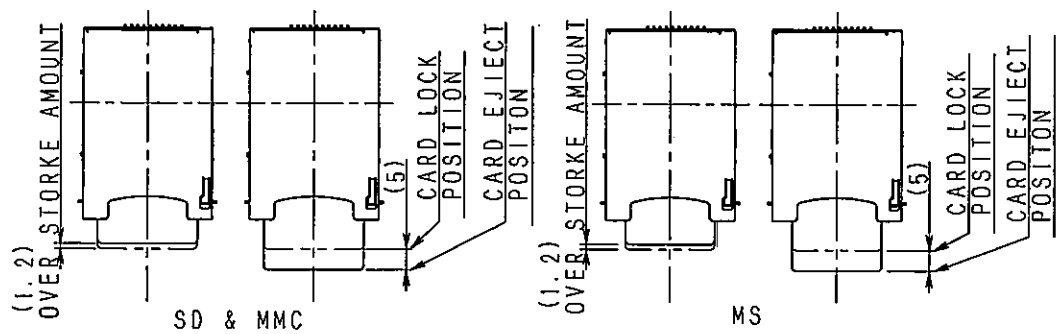
TOLERANCES UNLESS OTHERWISE SPEC.				DSGO.	July. 15. 2002	SCALE	MODEL No. (模型)
BASIC DIMENSION	TOLERANCE			T. MATSUSHITA		:	SCDBIC0101 1/2
UP TO 10	±0.3			CHKD.	July. 15. 2002	①	TITLE
ABOVE 10 TO 100	±0.5			Y. KURODA		②	PRODUCT DRAWING (製品図)
ABOVE 100	±0.8	2	Mar. 16. 2007	Y. K. W. O. K.	APPD.	July. 15. 2002	UNIT
ANGULAR DIMENSION	±3°	ZONE	SYMB	DATE	T. WAGATSUMA	mm	DOCUMENT NO.
				APPD			SCDBIC0101. AE12. 013

ALPS ELECTRIC CO., LTD.

FOLD 5

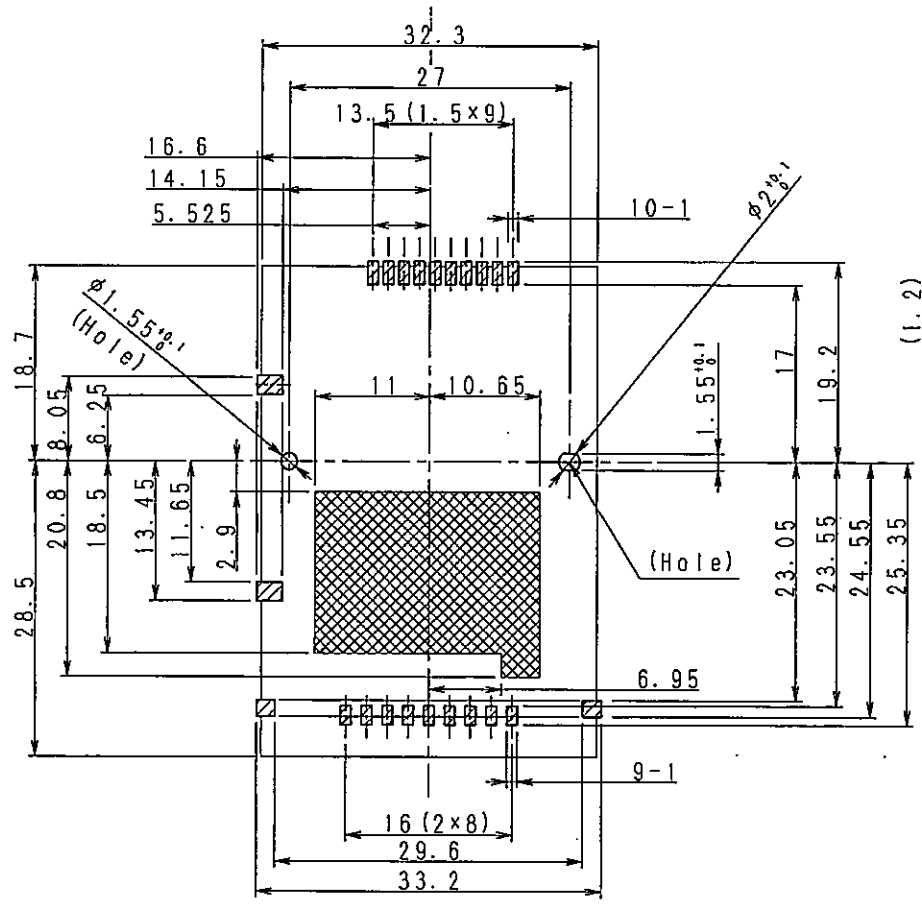
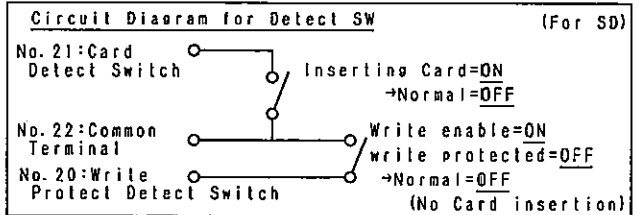
PRELIMINARY

OPERATING FIGURE



PIN ASSIGNMENTS

Connector Terminal No.	Pin No.	Connector Terminal No.	Pin No.
No. 1	SD&MMC No. 1	No. 10	MS No. 1
No. 2	SD&MMC No. 2	No. 11	MS No. 2
No. 3	SD&MMC No. 3	No. 12	MS No. 3
No. 4	SD&MMC No. 4	No. 13	MS No. 4
No. 5	SD&MMC No. 5	No. 14	MS No. 5
No. 6	SD&MMC No. 6	No. 15	MS No. 6
No. 7	SD&MMC No. 7	No. 16	MS No. 7
No. 8	SD No. 8	No. 17	MS No. 8
No. 9	SD No. 9	No. 18	MS No. 9
		No. 19	MS No. 10



Recommended P.C. Board layout (Mounting face side)
TOLERANCES UNLESS OTHERWISE SPEC. ±0.05

ZONE	SYMB	DATE	APPD	CHKD	DSGD	ALPS ELECTRIC CO., LTD. DSGD. July. 15. 2002 T. MATSUSHITA CHKD. July. 15. 2002 Y. KURODA APPD. July. 15. 2002 T. WAGATSUWA		SCALE : UNIT : mm	MODEL No. (NAME) SCDBIC0101 2/2 TITLE PRODUCT DRAWING (製品図) DOCUMENT NO. SCOBIC0101, AE22. 013

X-ON Electronics

Largest Supplier of Electrical and Electronic Components

Click to view similar products for [Standard Card Edge Connectors](#) category:

Click to view products by [ALPS](#) manufacturer:

Other Similar products are found below :

[6565204-6](#) [PKC-156](#) [1437274-4](#) [147889-1](#) [1489165-4](#) [EBT156-12B1X](#) [EBT15622B2X](#) [EBT156-22R2W](#) [1-582587-1](#) [1-582589-1](#) [2-6437275-9](#) [284-0102-12100](#) [306022901000000](#) [307-012-502-202](#) [307-024-526-201](#) [307-056-520-300](#) [307-080-526-208](#) [245-062-520-350](#) [287-0032-12101](#) [306-010-500-112](#) [306-028-525-102](#) [306-240-318](#) [307-036-502-202](#) [307-036-521-301](#) [307-072-526-202](#) [345-060-559-303](#) [368-004-520-201](#) [392-008-559-201](#) [534671-1](#) [5-530501-5](#) [341-240-317](#) [345-029-520-300](#) [345-030-500-301](#) [345-044-500-300](#) [345-220-058](#) [346-240-318](#) [357-030-526-201](#) [387-012-523-300](#) [395-044-520-300](#) [395-100-524-300](#) [50-12B-10](#) [50-6SN-5](#) [09-07-2032](#) [10035388-106LF](#) [10035388-802LF](#) [10122859-009LF](#) [10127905-B04B24BLF](#) [530555-1](#) [EBT156-15A2X](#) [2007209-1](#)