

# CLIFF

## 1/4" S2 Mono & Stereo Jack Sockets



S2 / BNB Solder Tag



S2 / BBB PC - A Special Nose



S2 / BNB PC - C Kinked



S2 / BBB PC - C Kinked

The **CLIFF®** range of S2 Jack Sockets incorporates our Ni-Ag® Alloy Self-Cleaning Contacts for superior performance and reliability. All models have a durable premium quality nylon body. Mounting hardware is normally supplied unassembled. The S2 Jack Socket is available with optional chassis grounding in mono or stereo with unswitched, switched or make contacts and with a choice of either solder tag or six standard PCB mounting versions.

### Significant features include:

- Ni-Ag® Alloy Self-Cleaning Contacts for superior performance and reliability.
- Optional 'Kinked' Legs for snap-in PCB mounting on PC-A and PC-C styles to facilitate pre-assembly and wave soldering.
- Tough, molded Nylon body. Standard colour black.
- Optional Chassis Grounding versions.
- Optional Plated Contacts.
- Optional EMI/RFI Screen.

**Cliff Electronic Components, Ltd.**

76 Holmethorpe Avenue, Holmethorpe Ind. Est.

Redhill, Surrey RH1 2PF. England

**Tel:** +44 (0) 1737 771375

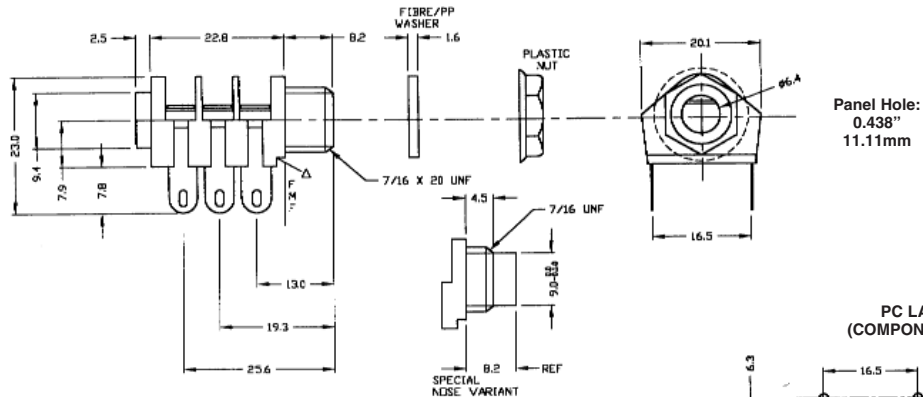
**Fax:** +44 (0) 1737 766012

**Email:** sales@cliffuk.co.uk



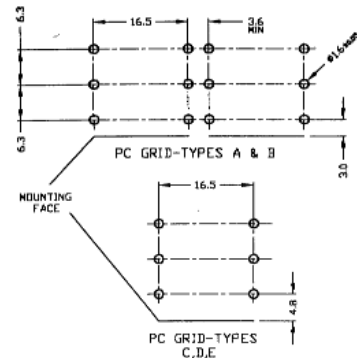
Visit us online at:

[www.cliffuk.co.uk](http://www.cliffuk.co.uk)



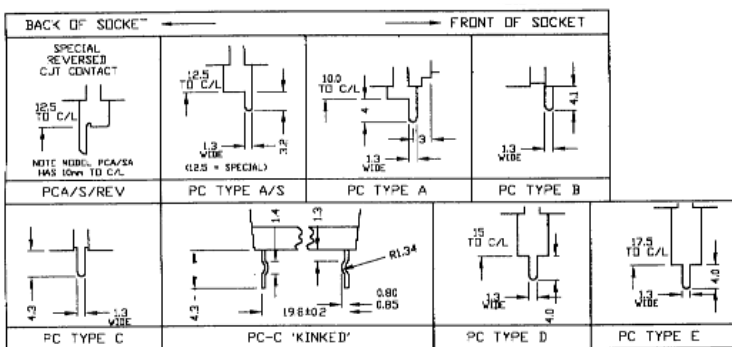
Panel Hole:  
0.438"  
11.11mm

PC LAYOUT  
(COMPONENT SIDE)



MAX PANEL THICKNESS 4.6mm

• FOR KINKED LEGS USE Ø1.5 HOLE ±0.05mm



Printed Circuit Board Styles

### Specification:

- Withstand voltage:** 2000V DC Min.
- Maximum Current:** 5 amps
- Temperature Rating:** -10° C to +70° C
- Life (Minimum):** 10,000+ Operations
- Nominal Contact Resistance:** <50mΩ

### Technical Data:

Designed to receive both mono and stereo 1/4" jack plugs, the S2 socket is produced from grade 1 black nylon and is supplied with a black nylon hexagonal mounting nut (standard) or optional nickel plated brass hexagonal nut or slotted ring nut. Coloured nylon nuts are also available for identification purposes. Contacts can be supplied with our special low noise Ni-Ag® 'ST' or Gold plating and in addition to the standard solder tag version, there are six different PCB mounting styles available. The S2 can also be supplied with prefitted EMI/RFI screen if required. When ordering, please state the contact arrangement required, with a plug inserted, using the following code from the front of the jack socket: B - Break, M - Make, S - Single, N - No Contact. For example, an S2/BMB PC Mounting type C Black, is a PC-C 3-pole stereo jack socket, 1st contact - 'Break', 2nd contact - 'Make' and third contact - 'Break'.



S2 Coloured Nut



S2 Hex Chrome Nut



Slotted Ring Nut



S2 EMI/RFI Screen

## X-ON Electronics

Largest Supplier of Electrical and Electronic Components

*Click to view similar products for [cliff](#) manufacturer:*

Other Similar products are found below :

[SRP1 BLACK](#) [CL1423](#) [CL1432](#) [CL159825BA](#) [CL19192RB](#) [CL2160B TP/6 CS](#) [CL-SFE/1 FILTERS](#) [HFRP-01](#) [S2/BBB \(CL1220A\)](#)  
[CIH206011](#) [CL14218](#) [FM686813](#) [CL12345](#) [CL1308G](#) [CL13106G](#) [CP22R](#) [CP30152](#) [CP30211](#) [CP303011X](#) [CL1406](#) [CL15501A](#) [CL1572](#)  
[CL681561](#) [CP30173](#) [CP30176](#) [CP30178](#) [CP30179](#) [CP30180](#) [CP30500C](#) [CP30202M3](#) [FCR1295](#) [FCR2065](#) [FCR7360B](#) [FM686816](#)  
[CIH29950](#) [CP30225SM](#) [CP30170](#) [CP30174](#) [CIH684216](#) [FW6190](#) [CP30182](#) [CP30184](#) [CP30202M](#) [CIH3021](#) [CP30208NMB](#) [CP30222SMB](#)  
[CP30230X](#) [XNACF3V \(CP300284\)](#) [FM686806](#) [CP30225S](#)