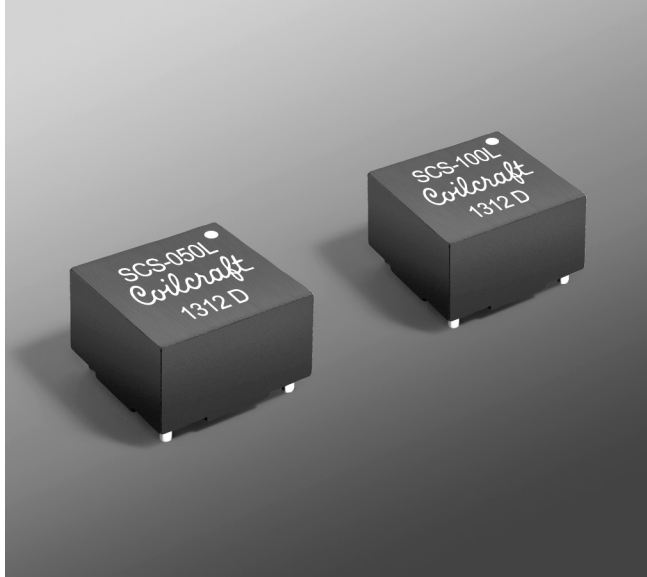




NEW!

Current Sense Transformers – SCS Series



- Sensed current up to 30 A
- Frequency range up to 1 MHz
- 500 Vrms, one minute isolation (hipot) between windings.

Core material Ferrite

Terminations RoHS compliant matte tin over nickel over phos bronze

Weight 3.4 – 3.7 g

Ambient temperature –40°C to +125°C

Storage temperature Component: –40°C to +125°C.

Tape and reel packaging: –40°C to +80°C

Resistance to soldering heat Max three 40 second reflows at +260°C, parts cooled to room temperature between cycles

Moisture Sensitivity Level (MSL) 1 (unlimited floor life at <30°C / 85% relative humidity)

Failures in Time (FIT) / Mean Time Between Failures (MTBF)

38 per billion hours / 26,315,789 hours, calculated per Telcordia SR-332

Packaging 200/13" reel Plastic tape: 32 mm wide, 0.5 mm thick, 24 mm pocket spacing, 3.0 mm pocket depth

PCB washing Tested with pure water or alcohol only. For other solvents, see Doc787_PCB_Washing.pdf

Part number ¹	Turns (N) pri:sec	Inductance ² min (mH)	DCR max ⁶ (Ohms)		Frequency range (kHz)	Volt-time product ⁴ (Vμsec)	Sensed current I _{in} ⁵ max (A)	Terminating resistance R _T ⁶ (Ohms)
			pri	sec				
SCS-050L_	1:50	3.8	0.0024	0.90	6 – 1000	80	30	1.7
SCS-100L_	1:100	14.8	0.0024	1.80	3 – 1000	160	30	3.3
SCS-200L_	1:200	59.2	0.0024	3.90	2 – 1000	320	30	6.7

1. When ordering, please specify **packaging** code:

SCS-200LD

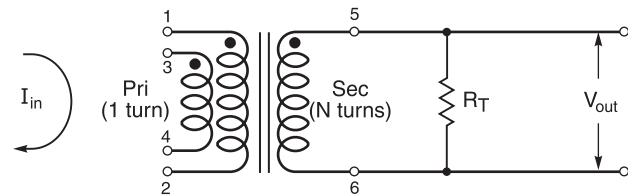
Packaging: D = 13" machine-ready reel. EIA-481 embossed plastic tape (200 parts per full reel).

B = Less than full reel. In tape, but not machine ready. To have a leader and trailer added (\$25 charge), use code letter C instead.

- Inductance measured between secondary pins at 10 kHz, 0.06 Vrms, 0 Adc.
- Primary DCR is measured with the windings connected in parallel.
- Maximum volt-time product is for the secondary, based on 2000 Gauss.
- Primary current of 30 A causes less than 25°C temperature rise from 25°C ambient. Higher current causes a greater temperature rise (see Temperature Rise vs Current curve).
- Terminating resistance (R_T) value is based on 1 Volt output with 30 Amps flowing through the primary. Varying terminating resistance increases or decreases output Voltage/Ampere according to the following equation:
 $R_T = V_{out} \times N_{sec} / I_{in}$.
- Electrical specifications at 25°C.

Refer to Doc 362 "Soldering Surface Mount Components" before soldering.

Typical Circuit

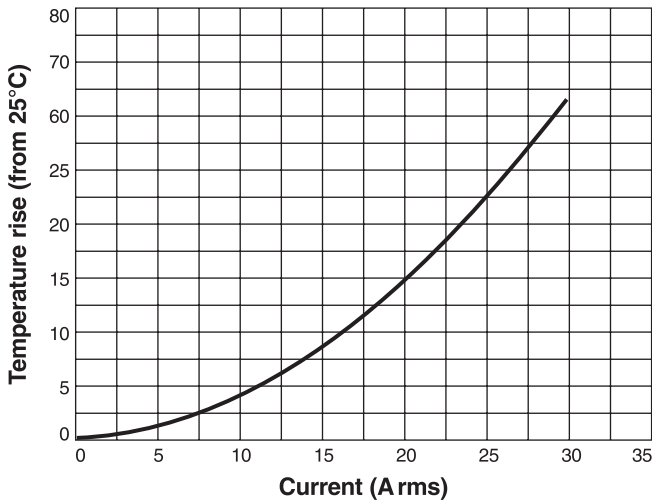


NEW!

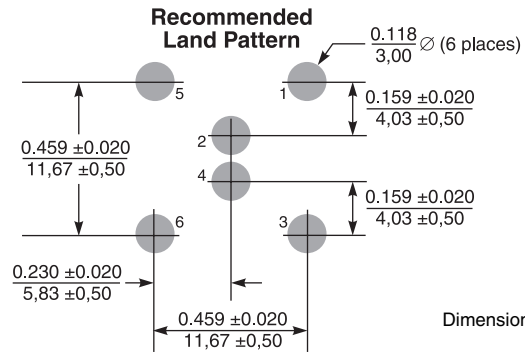
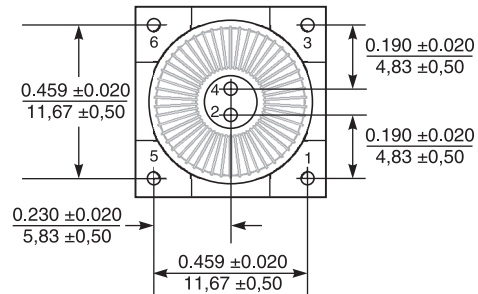
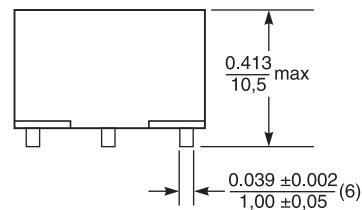
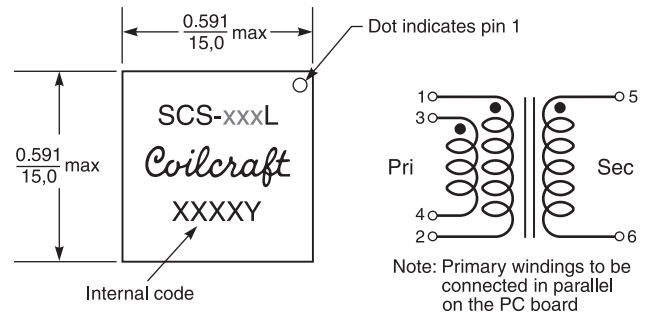


SCS Series Current Sense Transformers

Temperature Rise vs Current



Dimensions



X-ON Electronics

Largest Supplier of Electrical and Electronic Components

Click to view similar products for [coilcraft](#) manufacturer:

Other Similar products are found below :

[D05022P-332](#) [PCV-2-274-05L](#) [0603CS-15NXGLU](#) [1812SMS-R15GLC](#) [1008CS-151XJLB](#) [MSS1260-104MLD](#) [MSS1210-224KED](#)
[MSS1246-334KLC](#) [BU9H-103R25BL](#) [C423-2](#) [C393](#) [Q4438-BL](#) [C324A-2](#) [C403A-2](#) [POE120PL-24L_](#) [0805LS-471XJEB](#) [C478](#) [C466](#)
[D01608C-104](#) [D03316P-103](#) [RFB0807-102L](#) [RFB0810-561L](#) [RFB1010-150L](#) [PCV-0-102-10L](#) [0603HP-R33XGLU](#) [0603CS-18NXGLU](#)
[MSS7331-683MLB](#) [MSS7341-104MLB](#) [1008LS-222XJLB](#) [SER2013-362MLB](#) [2929SQ-331GEB](#) [XAL4020-221MEB](#) [C464](#) [C480](#) [C481](#)
[C465](#) [RFB1010-182L](#) [0603LS-223XJLB](#) [1812CS-682XJLC](#) [MSS1583-683MED](#) [Q4436-BL](#) [XAL6030-561MEC](#) [SER2915H-332KL](#) [C485](#)
[D03308P-104](#) [1812CS-472XK](#) [DS5022P-683](#) [DT3316P-224](#) [RFC1010B-106KE](#) [RFC0807B-274KE](#)