

Programming module and software for Wachendorff panel meters and controller TA/TH/TI/UA/UR/VZ/ZD

Installation manual



Version 2.0

July 2013

1. Introduction

Dear valued Customer!

Thank you for purchasing and using a product from our company. The Programming kit SFUR0KIT from Wachendorff Prozesstechnik GmbH Co.KG can be used for the programming of Wachendorff panel meters and controllers.

For getting the highest effort out of this unit, we kindly ask you to follow the mentioned instructions below:

Every person who is involved with the installation or usage of this unit, must carefully read and understand the installation manual and safety instructions!

2. Safety instructions

2.1 General information

To ensure the safe operation of this unit the instructions that appear in this manual must be strictly observed. In addition, when used all applicable legal and safety regulations for the respective application must be observed. The same applies correspondingly to the use of accessories.

2.2 Intended usage

The Programming kit SFUR0KIT from Wachendorff Prozesstechnik GmbH Co.KG can be used for the programming of Wachendorff panel meters and controllers of the series TA/TH/TI/UA/UR/VZ/ZD. Any other use is regarded not in accordance with the intended usage.



Units from Wachendorff must only be operated in accordance with the technical specifications by qualified personnel. Personnel regarded qualified is familiar with the installation, assembly, putting into operation and operation of the units and possesses adequate professional qualification for the task

2.3 Qualified personnel

The programming module must only be operated in accordance with the technical specifications by qualified personnel. Personnel regarded qualified is familiar with the installation, assembly, putting into operation and operation of the units and possesses adequate professional qualification for the task.

2.4 Remaining hazards

The Programming kit SFUR0KIT from Wachendorff is state of the art and safe to operate. A risk of danger can occur when deployed and operated improperly by untrained personnel.

In this manual remaining hazards are marked by the following warning symbol:



This symbol indicates that non-observance of the safety guidelines may cause hazards to persons even serious injury or death and/or the possibility of property damage.

2.5 Legal responsibility

Liability for material defects and defects of this documentation, particularly for the accuracy, correctness, freedom of protection or third party rights, completeness and/or usability - except for willful misconduct or gross negligence - is excluded.

2.6 CE-Conformity

The CE certificate is available at our company. We are pleased to send you a copy of it. Please feel free and contact us to get a copy.

3. Description

“Wachendorff Anzeigen-Regler“ is a dedicated software package for the configuration of Wachendorff panel meters and controller. It comes together with mini-USB cable and Programming module as part of the programming kit.



Figure 1: Wachendorff Software with Programming module

If compared to manual mode, this new programming kit offers several advantages:

- user-friendliness;
- simultaneous visualization of all parameters;
- real-time monitoring of the device's operation to evaluate also how the settings are affecting the control action;
- possibility to save the configurations on files and consequently to download them quickly on several devices.

Installation and minimum requirements

Please download the software from our download section under http://www.wachendorff.de/wp/dpc_dow_epg_sof.html and save the file in a dedicated folder on your PC. Execute “Setup.exe” and the installation process will start. Once it has been completed, the software will open a window which allows the user to install also the drivers of the Programming module.

„Wachendorff Anzeigen-Regler“ relies on Microsoft .NET Framework 2.0. Should this component not be already available on your PC, it will be automatically installed.

Compatible/Supported Operating Systems: Windows 2000 Service Pack 3; Windows 98; Windows 98 Second Edition; Windows ME; Windows Server 2003; Windows Vista Business; Windows Vista Business 64-Bit Edition; Windows Vista Enterprise; Windows Vista Enterprise 64-Bit Edition; Windows Vista Home Basic; Windows Vista Home Basic 64-Bit Edition; Windows Vista Home Premium; Windows Vista Home Premium 64-Bit Edition; Windows Vista Starter; Windows Vista Ultimate; Windows Vista Ultimate 64-Bit Edition; Windows XP Service Pack 3, Windows 7 32/64 Bit

Free space on disk: 280 MB (x86), 610 MB (x64).

4. How to start

Once the software and drivers have been successfully installed, the system is ready to use. The following paragraph will suggest some basic steps in order to get acquainted with the application and verify the correct operation of all parts.

Connect the Programming module to an USB port of your PC by means of the cable supplied with the kit.

- A) If drivers have been installed correctly, after a few seconds the system will confirm the new hardware as shown in Figure 2.

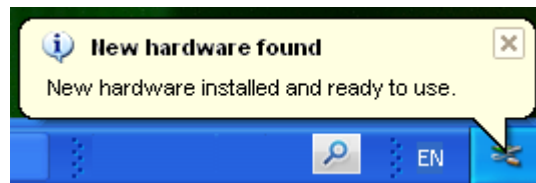


Figure 2:

- B) Connect Programming module with the unit.

The kit will be delivered with two different Programming modules. The module with the sticker “UA-Serie” is suitable for Wachendorff Universal displays series UAxxxxxx. The module with the sticker “UR/TH/TI/VZ/ZD/TA-Serie” is usable for units of the series URxxxxxx, TAxxxxxx, THxxxxxx, TIxxxxxx, VZxxxxxx and ZDxxxxxx. The correct positioning of the Programming module on the controller UR484802 will be shown in figure 3. The USB power is enough to turn the device on when the communication starts (UR3274Sx from 2.xx version).



Figure 3: Inserting Programming module on UR4848xx

- C) Start Wachendorff Anzeigen-Regler Software

The toolbar includes an area labelled as “Serial port:” which contains all options related to communication with the device. Make sure that option “Auto” is selected and that value for field “Slave ID” is 255 as shown in Figure 4

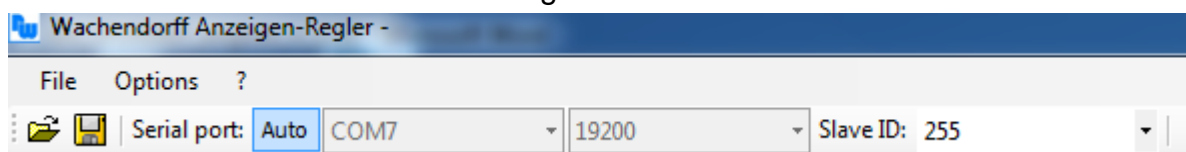


Figure 4: Communication is automatically managed by the software.

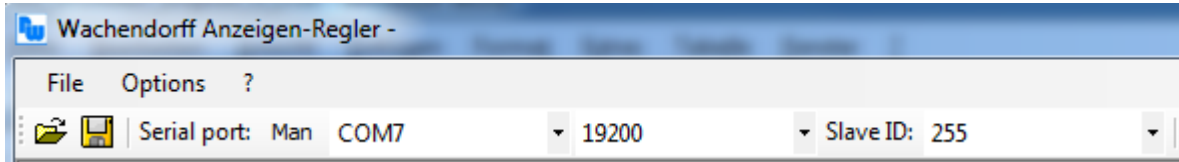


Figure 5: Communication is managed by the user, selecting the options in the relevant fields.

D) Select the relevant model in the “Device” field

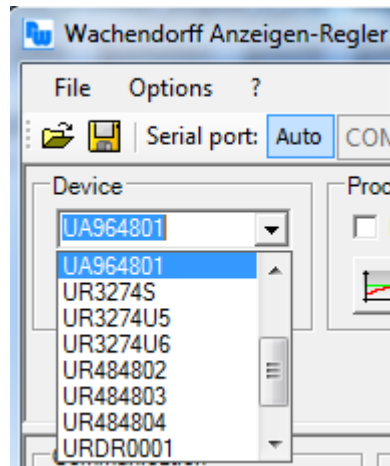


Figure 6: Field for the selection of device

E) Reading of the parameter

To start reading the parameters, press button „Read“ as shown in Figure 7.

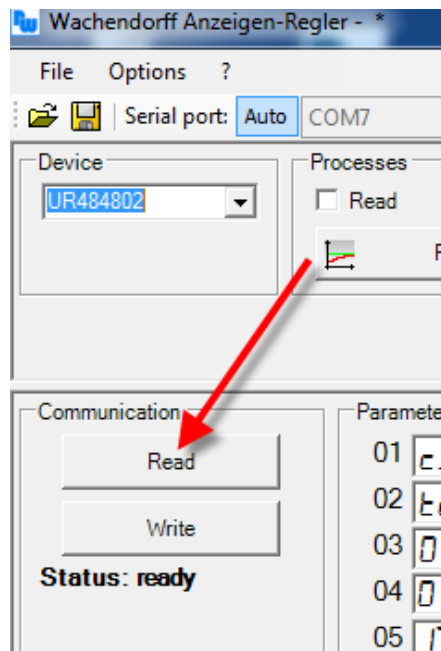


Figure 7: Communication options area

If option “Auto” is selected, the software will make a scanning of serial ports (Figure 8) to find out the virtual COM port which is assigned to the programming module.

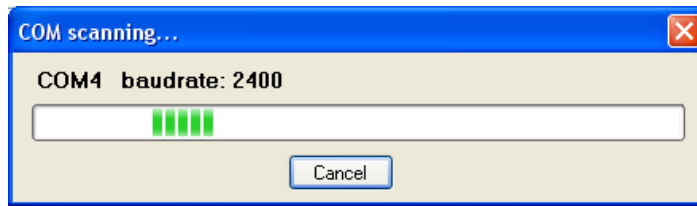


Figure 7: : Automatic search

If communication panel visualizes the writing “Successful read” as shown in Figure 9, it means that communication works properly and the system has been set correctly. Otherwise it will be necessary to check each previous step.

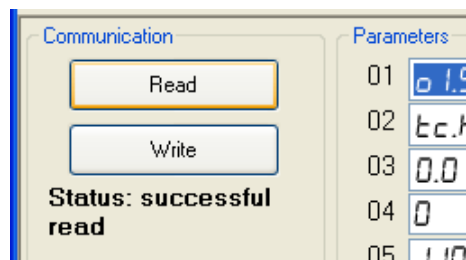



Figure 8: Reading completed successfully

5. Overview

Menu and toolbar (Figure 4 and Figure 5) have already been introduced in the previous chapter about automatic communication mode.

The manual mode can be useful if the software should be connected to more devices using different ports with a serial converter other than the programming module, for example WK107USB. For this same reason, it might be necessary to set for parameter “Slave ID” a value other than 255.

The buttons  are conceived for the management of configuration files, which include the selected device and the values of all parameters and set-points.

If option “**Read**” is selected in the field **Processes** (Figure 10), it is possible to visualize the values of process and set-point for the connected device.

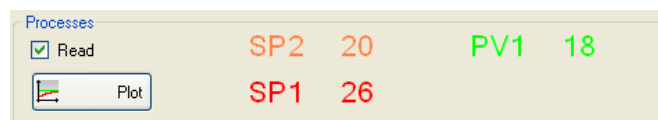


Figure 9: Processes area

The button “**Plot**” opens a window for the graphic visualization of processes (Figure 11).

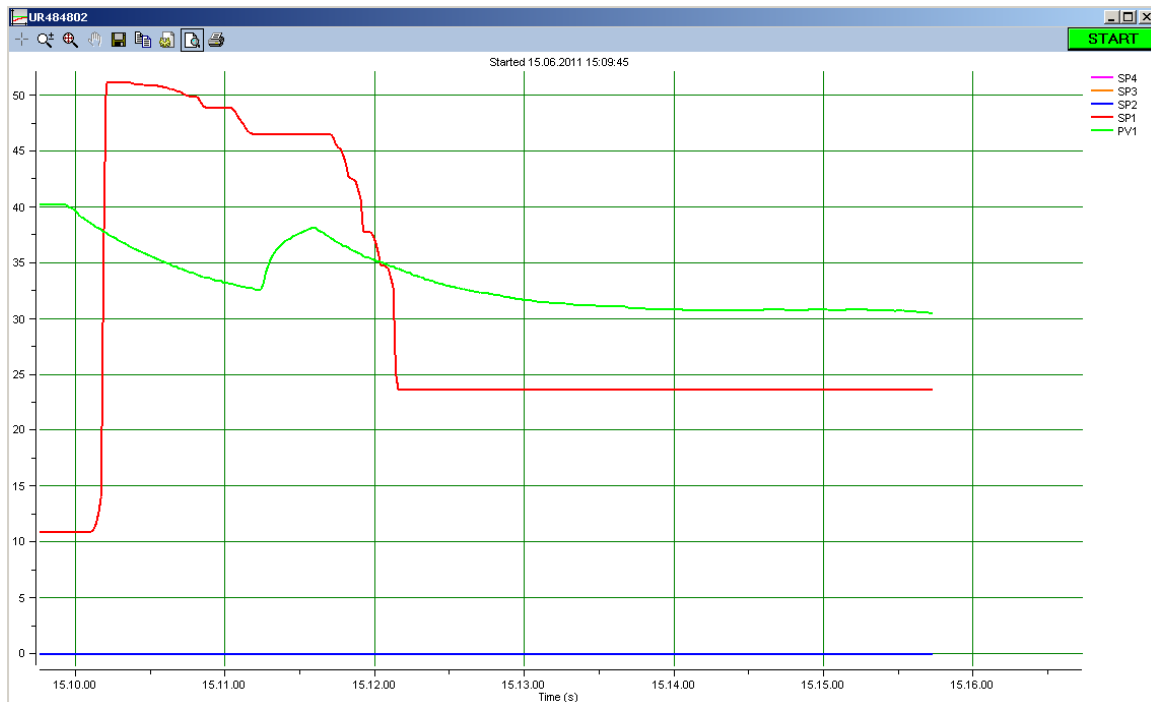


Figure 10: the buttons on toolbar enable to zoom in and enlarge a specific area of diagram , to show its precise value at a certain point , to print , save as bitmap file  or text file  all stored values.

The contents of **Parameters** and **Set point** areas varies according to the selected device. Values might be those previously stored on a configuration file or they might be default values for each field anytime you select a new device.

Still about communication area (Figure 7): press button **“Write”** to write/download parameters values on the device.

6. Copyright

The contents of this document are the property of the company Wachendorff Prozesstechnik GmbH & Co. KG. Copying or reproduction is prohibited without prior approval. Contents of this document refer to the device described therein.

7. Disclaimer

All technical content within this document can be modified without notice. The content of this document is content of a recurring audit.

In losses due to fire, earthquake, interventions by third or other accidents or intentional or accidental misuse or incorrect using or using under unnormal conditions, repairs will be invoiced.

Wachendorff Prozesstechnik is not liable for inadvertently loss due using or not using this product, such as loss of business income. Wachendorff Prozesstechnik is not liable for cases of an unnormal usage.



8. Other regulations and standards

WEEE Informationen

Disposal of old electrical and electronic equipment (as in the European Union and other European countries with separate collection systems). This symbol on the product or on its packaging indicates that this product may not be treated as household waste. Instead, it should be taken to an applicable collection point for the recycling of electrical and electronic equipment. If the product is disposed of correctly, you will help prevent potential negative environmental factors and human health, which could otherwise be caused by inappropriate disposal. The recycling of materials will help to conserve natural resources. For more information about recycling this product, please contact your local city office, your household waste disposal service or the shop where you purchased the product.

9. Technical Support

If you have any problems or questions please contact us at:



Industriestraße 7 • 65366 Geisenheim

Tel.: +49 6722 9965-544

Fax: +49 6722 9965-78

E-Mail: rss@wachendorff.de

Homepage: www.wachendorff-prozesstechnik.de

X-ON Electronics

Largest Supplier of Electrical and Electronic Components

Click to view similar products for [wachendorff](#) manufacturer:

Other Similar products are found below :

[Wachendorff](#)