



# Quick Start Guide EK-P4

# Quick Start Guide EK-P4

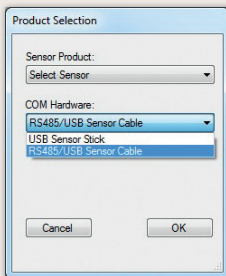
**1 Install FDTI USB driver** for the sensor cable.  
(<http://www.ftdichip.com/Drivers/VCP.htm>)

**2 Install software** after download from: [www.sensirion.com/USB-viewer](http://www.sensirion.com/USB-viewer)

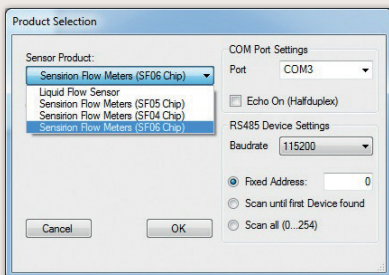
**3 Connect the USB sensor cable** to the sensor PCB and the PC.

**4 Start up the USB RS485 Sensor Viewer.**

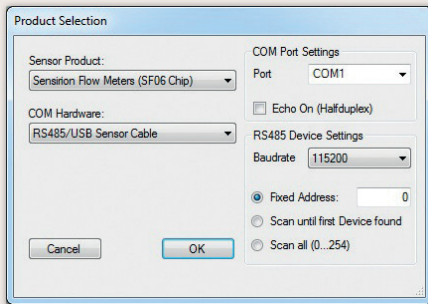
**5 Under COM Hardware, select «RS485/USB Sensor cable» and press «OK».**



**6 Select the sensor product «Sensirion Flow Meters (SF06 Chip)» and press «OK».**

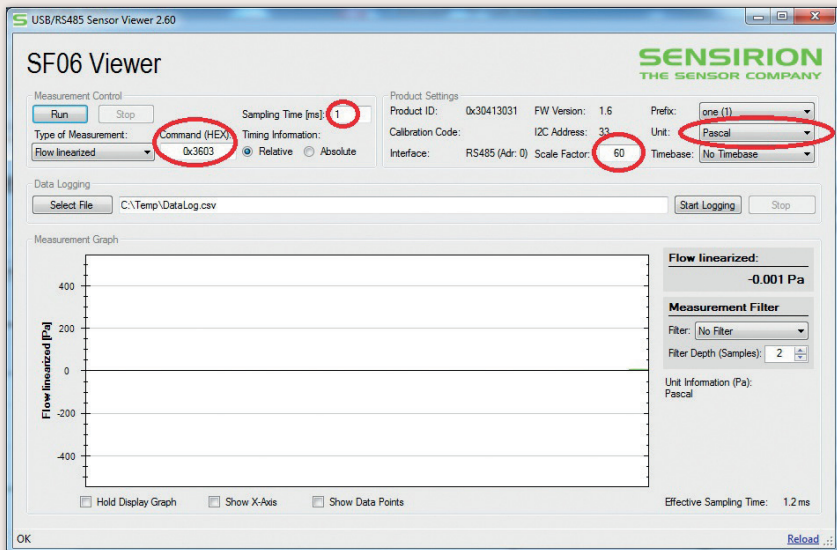


**7 Select the correct COM port and press «OK».**



**8 The SF06 Viewer appears. Adjust the following settings first:**

- Change units to «Pascal».
- Set scale factor to 60.
- Set sampling time to 1ms or more.
- Enter command HEX 0x3603.



**9 Press «Run».**

For more information about Sensirion's differential pressure sensors of the SDP3x series, please visit [www.sensirion.com/sdp3x](http://www.sensirion.com/sdp3x) or contact our technical customer support team:

**SENSIRION AG**

Laubisruetistrasse 50

8712 Staefa

Switzerland

Phone + 41 44 306 40 00

Fax + 41 44 306 40 30

[info@sensirion.com](mailto:info@sensirion.com)

[www.sensirion.com](http://www.sensirion.com)

## X-ON Electronics

Largest Supplier of Electrical and Electronic Components

*Click to view similar products for [sensirion](#) manufacturer:*

Other Similar products are found below :

[SCC1-CURRENT 5m](#) [SDP33-1500Pa-TR-250pcs](#) [SDP32-125PA-TR-250PCS](#) [SCD30 SAMPLE EXTENSION INCL. C](#) [SCC1 1-101551-01](#)  
[1-100688-02](#) [SLG-0150 FMK](#) [SLQ-QT500](#) [SFM4100-CO2 Downmount](#) [1-101204-01](#) [LG01-2000A090](#) [ASP1400](#) [SFM4100-N2O](#)  
[Downmount](#) [SDP816-500PA](#) [SLI-0430 FMK](#) [SLS-1500 Liquid Flow Meter](#) [LG01 CONNECTIVITY KIT](#) [EK-P3](#) [SPS30](#) [SCC1-RS485 2m](#)  
[SCC1-RS485-PIGTAIL, 2M](#) [LG01-2000A005](#) [SEK-SGPC3](#) [SEK-SCD30](#) [SLI-2000 FMK](#) [SLQ-QT500 FMK](#) [SEK-SFM3019](#) [Liquid Flow](#)  
[Pulsation Damping Kit](#) [3.000.237](#) [ARDUINO SHIELD SGP30"SHTC1](#) [ASF1400](#) [LS32-1500 Liquid Flow Meter](#) [1-101595-01](#) [SCC1-Analog](#)  
[2m](#) [1-RS485 5M](#) [SFM3019](#) [ASF1430](#) [Evaluation Kit SLF3S-0600F](#) [3.000.400](#) [LG16/LG01 Connectivity Kit UNF 1/4-28](#) [SDP1000-L05](#)  
[3.000.401](#) [SHTW2 XPLAINED PRO EXTENSION BOARD](#) [SEK-SHTW2-Sensors](#) [SFM4100-O2 Legris](#) [SDP1000-L025](#) [1-100934-01](#) [1-](#)  
[100932-01](#) [LG16 Connectivity Kit UNF 6-40 coned](#)