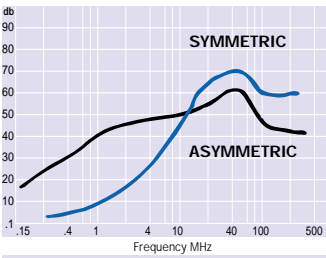
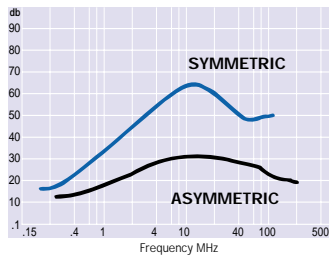


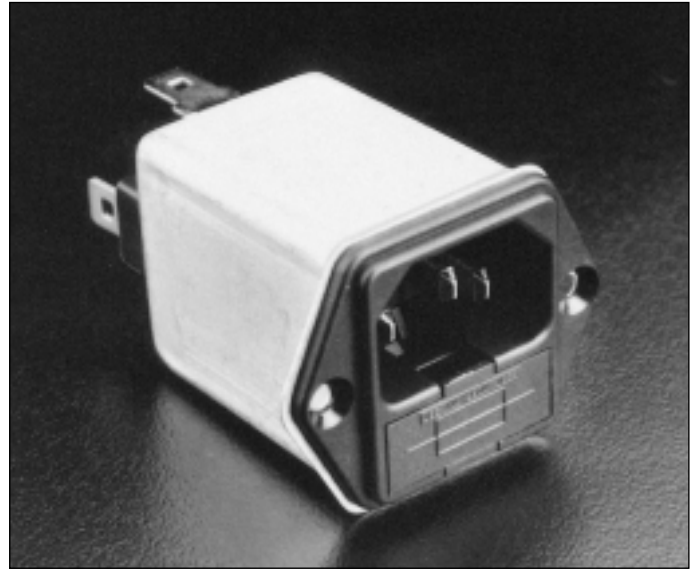
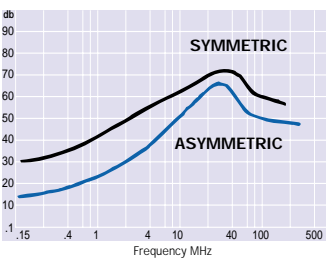
2 & 6 AMP STANDARD & SURGE PROT



2 & 6 AMP MEDICAL VERSION



2 & 6 AMP EARTH LINE CHOKE & EARTH LINE CHOKE SURGE PROTECTED



SF 2010 SF 2012	Rated Current A	Leakage Current @ 250V 50Hz	Inductance L1 mH L2 µH	Connections Input Output	Resistor Value MΩ	Number of Fuses	Approvals UL CE CB
Standard Version							
SF 2010-2/01	2	0.2mA	2.0	IEC 320 6.3 x 0.8 Faston	1	1	■ ■ ■
SF 2012-2/01	2	0.2mA	2.0	IEC 320 6.3 x 0.8 Faston	1	2	■ ■ ■
SF 2010-6/01	6	0.2mA	0.5	IEC 320 6.3 x 0.8 Faston	1	1	■ ■ ■
SF 2012-6/01	6	0.2mA	0.5	IEC 320 6.3 x 0.8 Faston	1	2	■ ■ ■
Medical Version							
SF 2010M-2/01	2	5µA	2.0	IEC 320 6.3 x 0.8 Faston	1	1	■ ■ ■
SF 2012M-2/01	2	5µA	2.0	IEC 320 6.3 x 0.8 Faston	1	2	■ ■ ■
SF 2010M-6/01	6	5µA	0.5	IEC 320 6.3 x 0.8 Faston	1	1	■ ■ ■
SF 2012M-6/01	6	5µA	0.5	IEC 320 6.3 x 0.8 Faston	1	2	■ ■ ■
Surge Protected Version (IEC 950 not applicable)							
SF 2010Z-2/01	2	0.2mA	2.0	IEC 320 6.3 x 0.8 Faston	1	1	■ ■ ■
SF 2012Z-2/01	2	0.2mA	2.0	IEC 320 6.3 x 0.8 Faston	1	2	■ ■ ■
SF 2010Z-6/01	6	0.2mA	0.5	IEC 320 6.3 x 0.8 Faston	1	1	■ ■ ■
SF 2012Z-6/01	6	0.2mA	0.5	IEC 320 6.3 x 0.8 Faston	1	2	■ ■ ■
Earth Line Choke Version							
SF 2010E-2/01	2	0.2mA	2.0 300	IEC 320 6.3 x 0.8 Faston	1	1	■ ■ ■
SF 2012E-2/01	2	0.2mA	2.0 300	IEC 320 6.3 x 0.8 Faston	1	2	■ ■ ■
SF 2010E-6/01	6	0.2mA	0.5 300	IEC 320 6.3 x 0.8 Faston	1	1	■ ■ ■
SF 2012E-6/01	6	0.2mA	0.5 300	IEC 320 6.3 x 0.8 Faston	1	2	■ ■ ■
Earth Line Choke, Surge Protected (IEC 950 not applicable)							
SF 2010EZ-2/01	2	0.2mA	2.0 300	IEC 320 6.3 x 0.8 Faston	1	1	■ ■ ■
SF 2012EZ-2/01	2	0.2mA	2.0 300	IEC 320 6.3 x 0.8 Faston	1	2	■ ■ ■
SF 2010EZ-6/01	6	0.2mA	0.5 300	IEC 320 6.3 x 0.8 Faston	1	1	■ ■ ■
SF 2012EZ-6/01	6	0.2mA	0.5 300	IEC 320 6.3 x 0.8 Faston	1	2	■ ■ ■

Temperature Range: -25°C to +85°C
Operating Voltage: 250Vac
Operating Frequency: 0 to 400Hz
Test Voltage: L+N to ground, 2700Vdc, 2 seconds

Varistor
 Zinc oxide type; energy absorption 21 Joules (current impulse defined in IEC 60-2 Section 6). Varistor voltage: 430Vdc(measured at 1mA); clamping voltage 710V at 10A

■ Approved
 □ Submitted for Approval

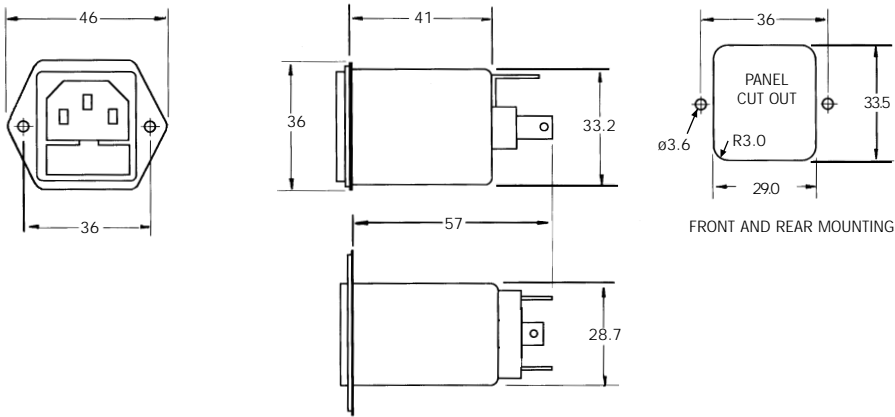
IEC 950 (EN 60950) Applications
 Twin fused version only

Continued on next page

Continued from previous page

DIMENSIONS

All dimensions are nominal and in mm

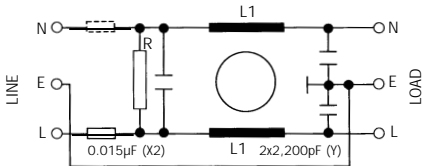


CIRCUIT DIAGRAMS

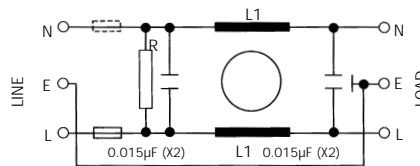
SF 2010 = 1 Fuse 5 x 20mm

SF 2012 = 2 Fuses 5 x 20mm

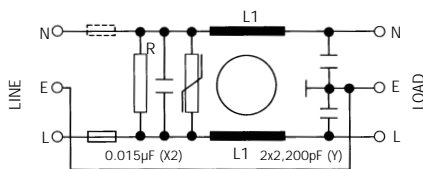
Standard Version



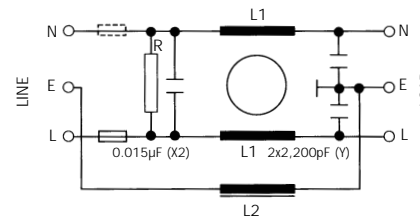
Medical Version (Suffix 'M')



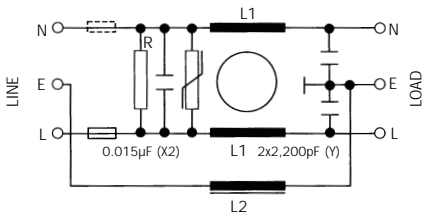
Surge Protected Version (Suffix 'Z')



Earth Line Version (Suffix 'E')



Earth Line Choke, Surge Protected Version (Suffix 'EZ')



X-ON Electronics

Largest Supplier of Electrical and Electronic Components

Click to view similar products for [belling lee manufacturer](#):

Other Similar products are found below :

[123984R](#) [003846CM](#) [124104AM](#) [L1744A](#) [L2006A](#) [124054X](#) [124064G](#) [REF-H](#) [L2143/6/L](#) [L1349/FP](#) [L1350/NI](#) [L1904C/8/CS](#) [L1790A](#)
[L693/3](#) [L754/2](#) [003722EM](#) [124102EM](#) [L1792A](#) [REF-02](#) [SF2032-6/01](#) [L1317/BLACK](#) [L1382/H](#) [L2225](#) [L1318/BLACK](#) [L309/1/RED](#)
[L1904C/6/CS](#) [L1904A/6/FP](#) [Y9236](#) [L1904A/8/FS](#) [L1904A/8/FP](#) [L1904C/7/PCR](#) [L2224](#) [L1904C/4/CS](#) [L2180](#) [L1568/1/RED](#) [L1639B/NI](#)
[REF-06](#) [REF-11](#) [REF-F](#) [L1001/1/BLACK](#) [L1436A/P](#) [L1436B/S](#) [L1465/RPCS](#) [L1793A](#) [L1850/1/GREEN](#) [L1850/1/RED](#) [L1896A/GREEN](#)
[L1896A/RED](#) [L1904A/5A/FP](#) [L1904A/5/FP](#)