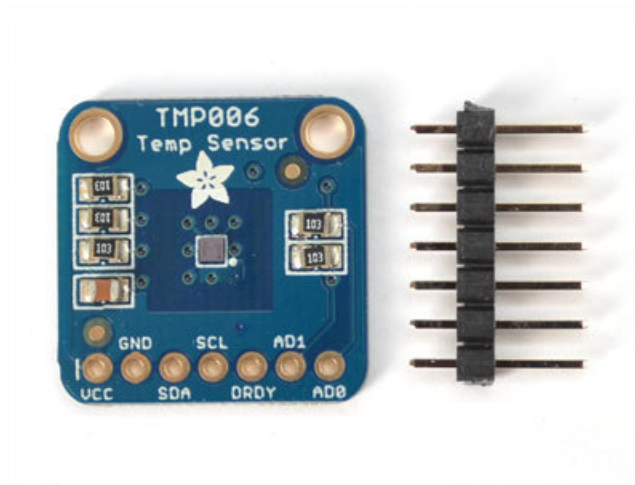


TMP006 Infrared Sensor Breakout

Created by Bill Earl

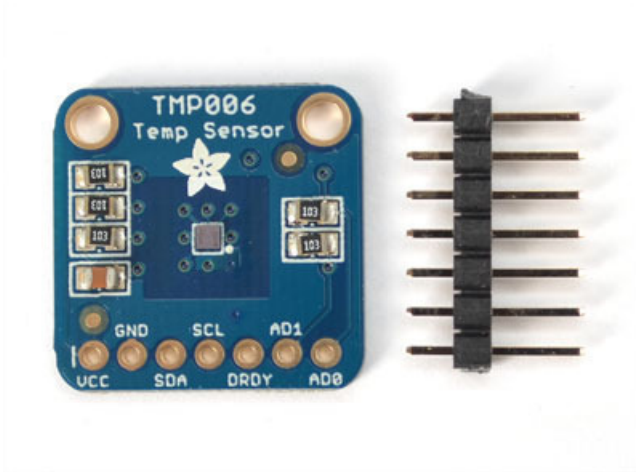


Last updated on 2018-08-22 03:34:35 PM UTC

Guide Contents

Guide Contents	2
Overview	3
What is a Thermopile?	3
Assembly and Wiring	4
Assembling the TMP006	4
Position the Header	4
Position the Breakout	5
And Solder!	5
Wiring the TMP006	5
Connections for R3 and Later Arduinos:	5
Connections for 'Classic" Arduinos:	6
Addressing	6
For extra credit:	7
Using the Thermopile Sensor	8
Download the Library	8
Compile the Example Code	8
Sensor Applications	8
Angle of View	8
Surface to be Measured	8
Downloads	10
Files	10
Schematic	10
Fabrication Print	10

Overview



Unlike most temperature sensors, the TMP006 does not require contact with the object it is measuring. It uses a very sensitive thermopile to measure the infrared energy being emitted from the surface of the object.

This sensor works best with objects that are good emitters of infrared radiation. The ideal emitter is a completely non-reflective surface or "[black body \(https://adafru.it/c2W\)](https://adafru.it/c2W)". Black anodized aluminum or cast iron are pretty good emitters. Polished metal surfaces are very poor emitters, but can usually be turned into a good emitter with a bit of flat-black paint.

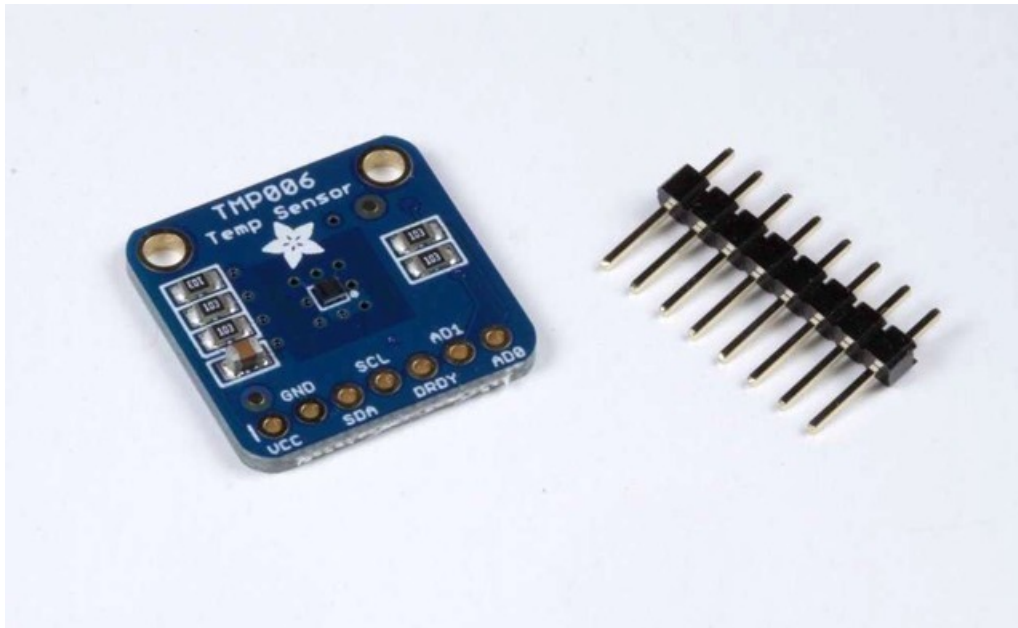
The TMP006 works with 3v to 5v, so it can be used with most microcontrollers without the need for a level shifter. It connects via the i2c bus and is addressable so you can have up to 8 TMP006 sensors on the same bus.

What is a Thermopile?

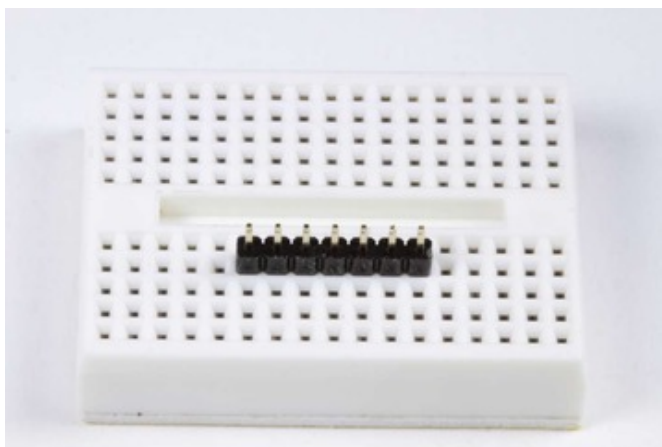
A [thermopile \(https://adafru.it/c2X\)](https://adafru.it/c2X) is essentially a whole lot of thermocouples aligned in parallel, but wired in series. Each thermocouple will generate a microvolt-level signal proportional to the temperature differential from the hot end to the cold end. And by wiring them in parallel, the output is the sum of all outputs of all of the thermocouples. By multiplying the output like this, very small temperature differences can be measured.

Assembly and Wiring

Assembling the TMP006

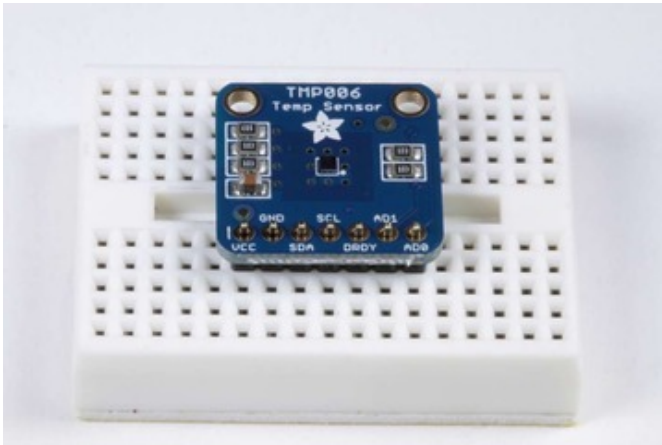


The TMP006 Thermopile Breakout comes with all surface-mount components pre-soldered. For use on a breadboard you will want to solder in the supplied header.



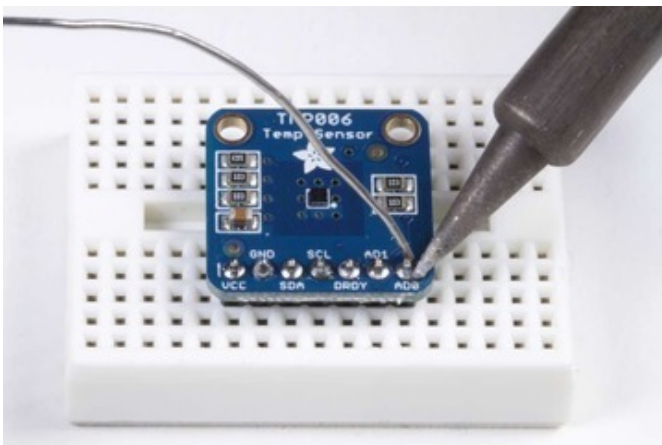
Position the Header

Cut the header to length and insert it in a breadboard with the long pins down.



Position the Breakout

Place the breakout board over the short end of the header pins.



And Solder!

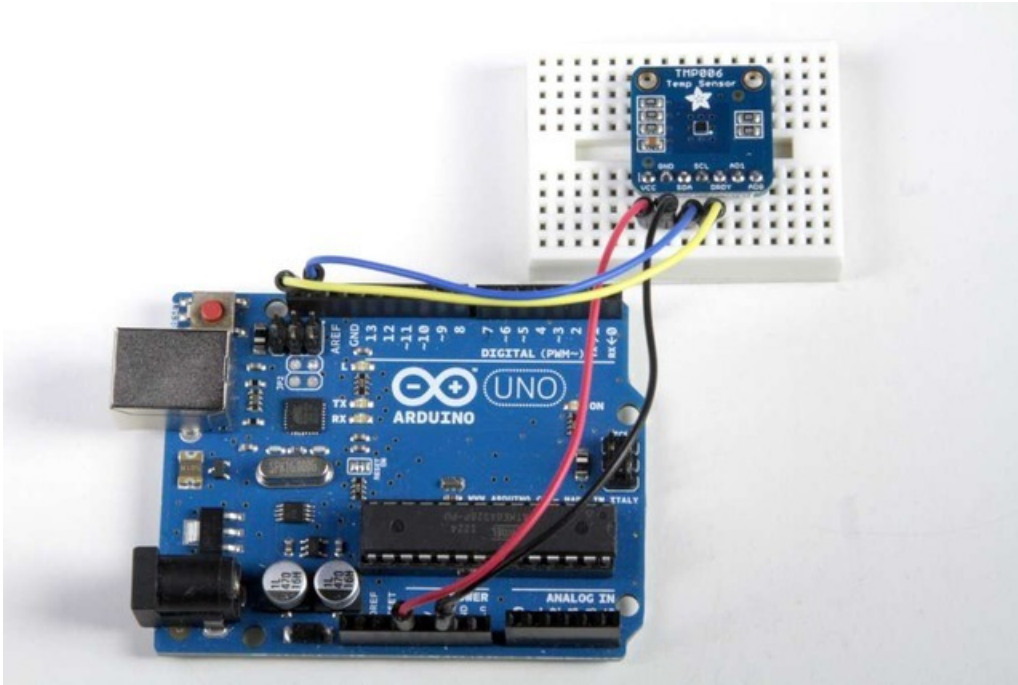
Solder each pin for a solid electrical connection.

Wiring the TMP006

The TMP006 communicates over I2C, so you only need 4 wires to connect it to the Arduino. The SDA and SCL pins can be shared with other I2C devices.

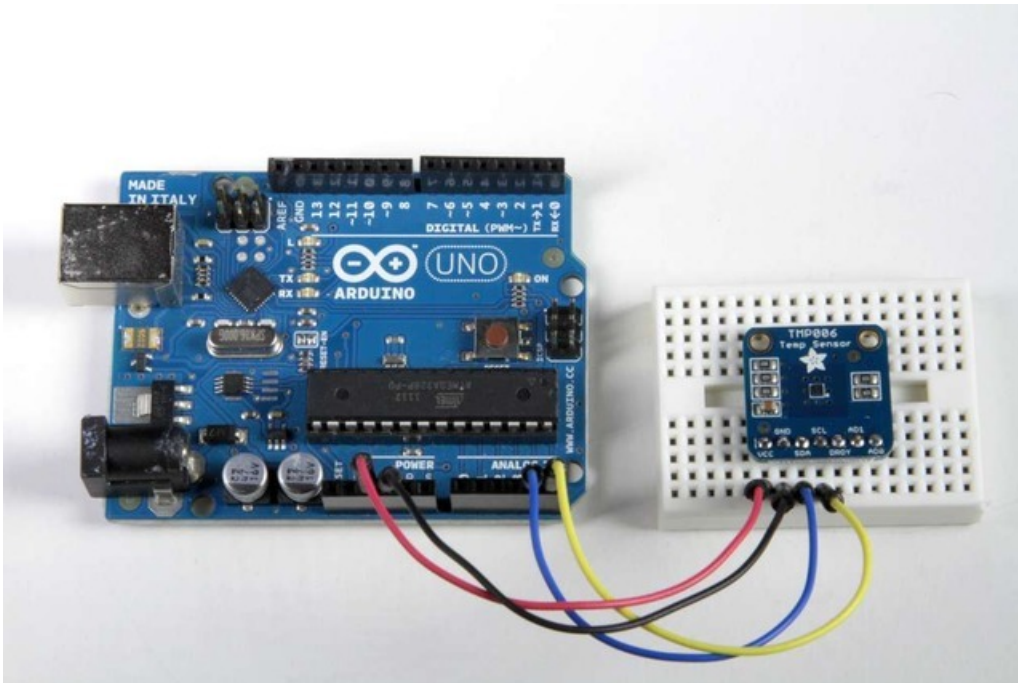
Connections for R3 and Later Arduinos:

- VCC -> 3.3v or 5v
- GND -> GND
- SDA -> SDA
- SCL -> SCL



Connections for 'Classic' Arduinos:

- VCC -> 3.3v or 5v
- GND -> GND
- SDA -> Analog 4 (20 on Mega)
- SCL -> Analog 5 (21 on Mega)



Addressing

To use multiple TMP006 breakouts on one i2c bus, you need to give each one a different i2c address. The chip uses a clever addressing scheme to allow up to 8 addresses using just 2 address pins.

The default address of the TMP006 is 0x40. By connecting the address pins as in the following table, you can generate any address between 0x40 and 0x47

ADO	AD1	i2c Address	GND	GND	0x40	GND	VCC	0x41	GND	SDA	0x42	GND	SCL	0x43	VCC	GND	0x44	VCC	VCC	0x45
VCC	SDA	0x46	VCC	SCL	0x47															

For extra credit:

The address lines are sampled continuously. By clever manipulation of the address lines, it is possible to dynamically re-address TMP006 breakouts to expand the total number of breakouts connected to the bus.

Using the Thermopile Sensor

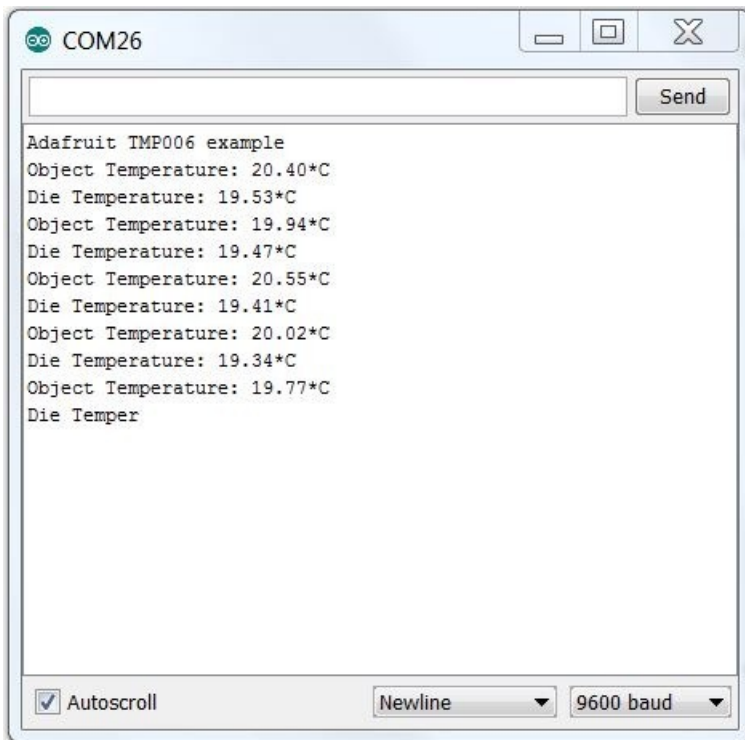
Download the Library

First download and install the [TMP006 sensor library \(https://adafru.it/c2Y\)](https://adafru.it/c2Y). For tips on installing libraries, see our [All About Arduino Libraries Guide \(https://adafru.it/aYM\)](https://adafru.it/aYM).

Compile the Example Code

Open the tmp006 example sketch in the Arduino IDE, compile and upload it. This will verify that you have the library installed correctly and let you start experimenting with basic sensor readings.

Once you upload the example sketch, open the Serial Monitor and view the output. The sensor should display a new reading about every 4 seconds.



The screenshot shows the Serial Monitor window for COM26. The output text is as follows:

```
Adafruit TMP006 example
Object Temperature: 20.40*C
Die Temperature: 19.53*C
Object Temperature: 19.94*C
Die Temperature: 19.47*C
Object Temperature: 20.55*C
Die Temperature: 19.41*C
Object Temperature: 20.02*C
Die Temperature: 19.34*C
Object Temperature: 19.77*C
Die Temper
```

At the bottom of the window, the 'Autoscroll' checkbox is checked, the 'Newline' dropdown is set to 'Newline', and the '9600 baud' dropdown is set to '9600 baud'.

Sensor Applications

There are many advantages to contact-less temperature sensing. But there are a few important things to consider when using these sensors. We will cover a couple of the most important ones here. For more detail, you will want to read through the [TMP006 User's Guide \(https://adafru.it/c2Z\)](https://adafru.it/c2Z).

Angle of View

An important thing to consider for a contact-less sensor applications is the angle of view. The TMP006 has a very wide angle of view. If you are not careful in positioning the sensor relative to the surface being measured, the readings will be influenced by other nearby surfaces.

The following video from TI demonstrates the angle of view and how to control it.

Surface to be Measured

As mentioned earlier, the sensor works best when measuring a surface that is a good emitter. In general, that means a

dull, dark colored surface. You will not get good readings from shiny, reflective objects.

There is a handy table of emissivities of common objects here: http://www.engineeringtoolbox.com/emissivity-coefficients-d_447.html (<https://adafru.it/c30>)

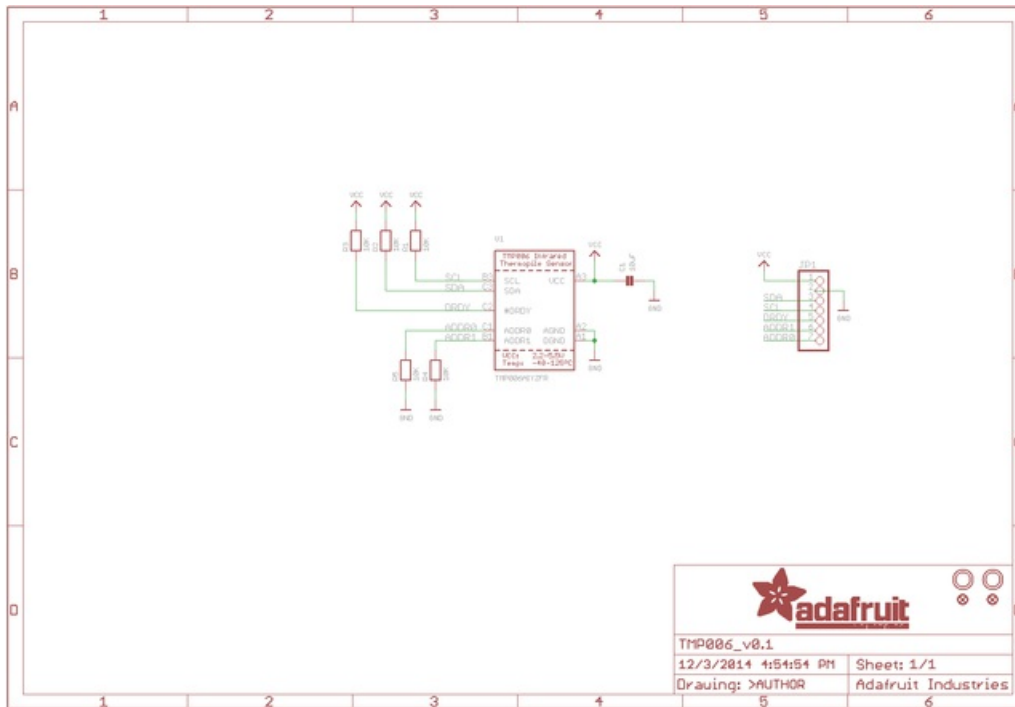
Downloads

Adafruit's [TMP006 Library for the Arduino.](https://adafru.it/c2Y) (<https://adafru.it/c2Y>)

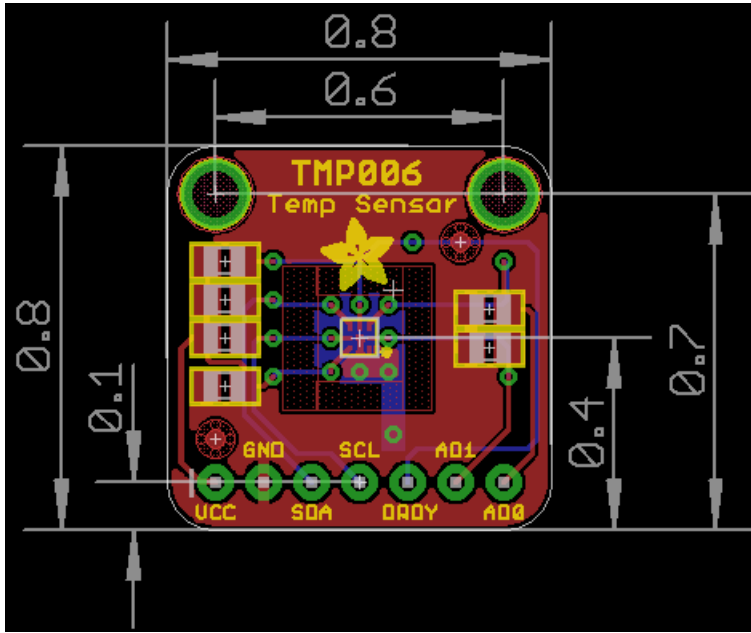
Files

- [TMP006 Data Sheet](https://adafru.it/c31) (<https://adafru.it/c31>) from TI
- [TMP006 User's Guide](https://adafru.it/c2Z) (<https://adafru.it/c2Z>) from TI
- [Fritzing object in Adafruit Fritzing Library](https://adafru.it/aP3) (<https://adafru.it/aP3>)
- [EagleCAD PCB files](https://adafru.it/pFv) (<https://adafru.it/pFv>)

Schematic



Fabrication Print



X-ON Electronics

Largest Supplier of Electrical and Electronic Components

Click to view similar products for [Temperature Sensor Development Tools](#) category:

Click to view products by [Amphenol](#) manufacturer:

Other Similar products are found below :

[DPP201Z000](#) [DPP202Z000](#) [DPP901Z000](#) [EVAL-ADT7516EBZ](#) [EVAL-ADT75EBZ](#) [T20162SRXA](#) [T20321SRXA](#) [MIKROE-912](#)
[WPP100B009](#) [T20321SS2B](#) [EVAL-CN0394-ARDZ](#) [MAX6581EVKIT+](#) [DS1921K#](#) [T2016P2CRRXC4S2](#) [T20162SS2A](#) [MAX6639EVKIT+](#)
[DC2608A-KIT](#) [DC2296A-KIT](#) [DC2608A](#) [DC2507A](#) [SL19](#) [ADM00902](#) [SECO-RSL10-CAM-GEVB](#) [TMP9A00-EP-EVM](#) [4821](#)
[LM74500Q1EVM](#) [EVAL-ADT7422MBZ](#) [EVAL-ADT7420MBZ](#) [MAXREFDES173#](#) [DS18B20EVKIT#](#) [EVAL-ADT7420ARDZ](#)
[MAX6654EVKIT](#) [EVAL-ADT7320MBZ](#) [EV-TEMPSENSE-ARDZ](#) [MIKROE-4316](#) [MIKROE-4194](#) [MAX1617AEVKIT](#) [MIKROE-3999](#)
[MIKROE-4301](#) [MIKROE-3994](#) [MIKROE-4295](#) [TMPSNSRD-RTD2](#) [MIKROE-2273](#) [MIKROE-2501](#) [MIKROE-2539](#) [MIKROE-2554](#)
[Kit_UDOO_Neo_TempSensor-PK](#) [LM96163EB/NOPB](#) [MIKROE-56](#) [TMP303CDRLR](#)