

CLEAR HOLE MOUNTING BRACKETS

Designers' Choice



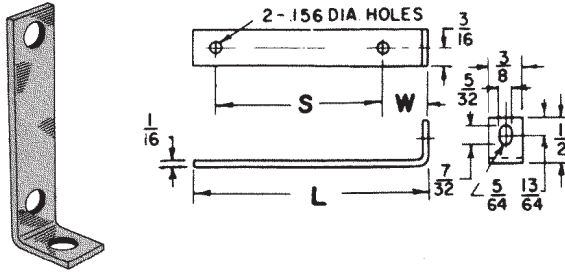
BOARD BRACKETS

Originally designed for our line of standardized terminal boards; these brackets can also be used in other applications.

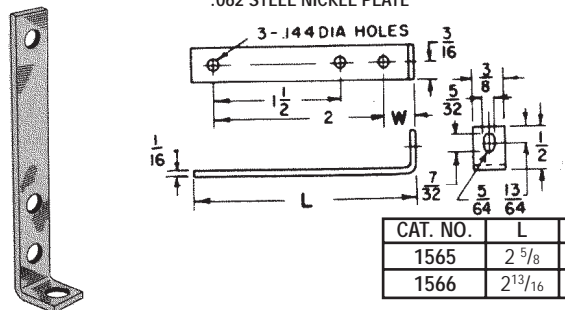
Choice of Steel or Aluminum

MATERIAL:

- .062 Steel, Nickel Plate
- .062 Aluminum



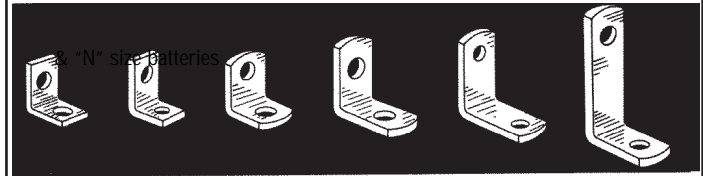
CAT. NO.		W	L	S	For Use With Board No's (see page 98)		
Steel	Alum.				15032	15072	15092
1556	622	3/8	1 5/8	1	15032	15072	15092
1567	623	3/8	2 1/8	1 1/2	15033	15073	15093
1568	624	3/8	2 5/8	2	15034	15074	15094
1569	625	3/8	3 1/8	2 1/2	15035	15075	15095
1570	626	9/32	1 3/16	3/4	15022	15024	15030
1571	627	9/32	1 5/8	1 3/16	15036	15076	15096



CAT. NO.	L	W
1565	2 5/8	3/8
1566	2 13/16	9/16

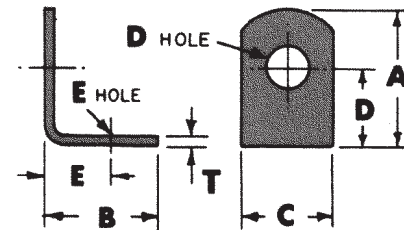
UNIVERSAL BRACKETS

A wide variety of brackets for various mounting applications.



633	613	615	618 4335 4336	619	620 4326
-----	-----	-----	---------------------	-----	-------------

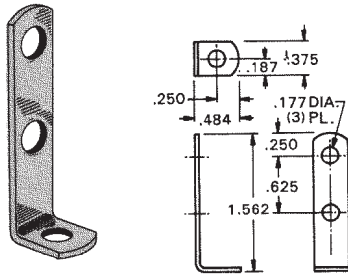
STANDARD BRACKETS (Brass and Steel)



Selection of Brackets with Clear Holes

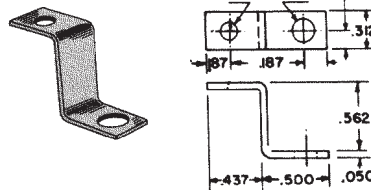
CAT. NO.	A	B	C	D	"D" Hole Dia.	E	"E" Hole Dia.	"T" Material	Finish
633	.375	.375	.281	.218	.140	.218	.140	.032 Brass	Nickel
613	.390	.453	.375	.234	.147	.299	.128	.032 Brass	Nickel
615	.420	.343	.281	.281	.144	.203	.128	.032 Brass	Tin
4335	.562	.562	.500	.412	.120	.411	.120	.062 Steel	Nickel
4336	.562	.562	.500	.412	.144	.412	.144	.062 Steel	Nickel
618	.628	.628	.375	.378	.169	.378	.169	.050 Brass	Tin
619	.687	.687	.375	.500	.144	.500	.144	.032 Steel	Tin
4326	1.013	.487	.312	.816	.140	.332	.140	.050 Steel	Nickel
620	1.156	.656	.375	.906	.169	.420	.169	.032 Steel	Tin

.062 STEEL NICKEL PLATE



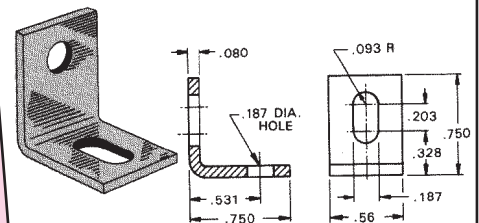
CAT. NO. 1564

.050 STEEL NICKEL PLATE



CAT. NO. 4325

.080 ALUMINUM

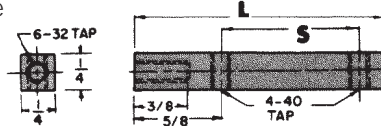


CAT. NO. 4337

BOARD SUPPORT BRACKETS

MATERIAL: Brass, Zinc Plate

A sturdy support for mounting of standardized terminal boards.



CAT. NO.	Overall Length "L"	Spacing "S"
1647	2 3/8	1 1/2
1648	2 7/8	2
1649	3 3/8	2 1/2

CUSTOM STAMPING AND ASSEMBLY

Keystone is fully integrated to meet your total design & production needs.

Manufacturing custom designs & modifications of standard items is our specialty.

Quotations on special **stamping & assembly** furnished promptly upon receipt of sample, sketch, print or CAD drawings.

X-ON Electronics

Largest Supplier of Electrical and Electronic Components

Click to view similar products for [Mounting Hardware](#) category:

Click to view products by [Kemet](#) manufacturer:

Other Similar products are found below :

[60687-01 LOCK WASHER Black](#) [627](#) [M3783-7001](#) [7717-139N](#) [7717-8DAP](#) [8351-832-A-24](#) [FPK-02-R10](#) [1-18023-0](#) [HD7-1](#) [R501-000-021](#)
[1404-0016-78](#) [154-006](#) [155-012](#) [1566](#) [1566](#) [BR16A](#) [195-003](#) [195-004](#) [195-012](#) [197-092](#) [20800000003](#) [21899-3](#) [1671](#) [194-001](#) [195-010](#)
[AMCPJ51](#) [2193](#) [2518](#) [448192-2](#) [4658](#) [4665](#) [4668](#) [4731](#) [BVX-BCK](#) [561-T001](#) [LDIN30](#) [4637](#) [4640](#) [4674](#) [1-18023-2](#) [63291-01](#) [SMALL](#)
[PATTERN HEX NUT](#) [70001938](#) [70001953](#) [613](#) [616](#) [20607-1](#) [1585888-1](#) [2547](#) [90100002-1SW](#) [81517301](#)