

REV	ECN, ERN NO.	DATE	APPRD.
F	PRODUCT DRAWING (EAR 14159)	JAN31/13	K.L.

ORDERING CODE: F C E 1 7 - E 0 9 P E - A 8 0 G

SERIES  
FCE17=FILTERED D-SUB, ROHS

SIZE/NUMBER OF CONTACTS  
E09, A15, B25, OR C37

CONNECTOR STYLE  
P=PIN

TERMINATION TYPE  
E=VERTICAL MOUNT PCB TAIL

MODIFIER  
0=STANDARD

FILTER CAPACITANCE  
D=50 pF  
B=100 pF  
7=1200 pF  
0=180 pF  
1=220 pF  
4=330 pF  
F=2200 pF  
9=5600 pF  
1=470 pF  
2=680 pF  
4=820 pF

REFER TO AMPHENOL CATALOGUE FOR FILTER PERFORMANCE CHARACTERISTICS

MOUNTING  
2=1.20[3.05] DIA THROUGH HOLE  
3=#4-40 UNC SELF-LOCKING THREAD  
4=#4-40 UNC THREAD  
5=#4-40 UNC THREADED STANDOFF  
6=M3 x 0.5 THREAD  
9=STANDOFF WITH BOARDLOCK & #4-40 THREADED JACK SOCKETS INSTALLED  
A=#4-40 THREADED STANDOFF WITH BOARDLOCK  
E=CODE 4 MOUNTING WITH #4-40 UNC HEX JACK SOCKETS SUPPLIED

NO DIGIT=STANDARD 15 MICRONS THICKNESS  
[0.38 MICRONS] GOLD ON MATING AREA  
G=50 MICRONS THICKNESS [1.27 MICRONS] GOLD ON MATING AREA



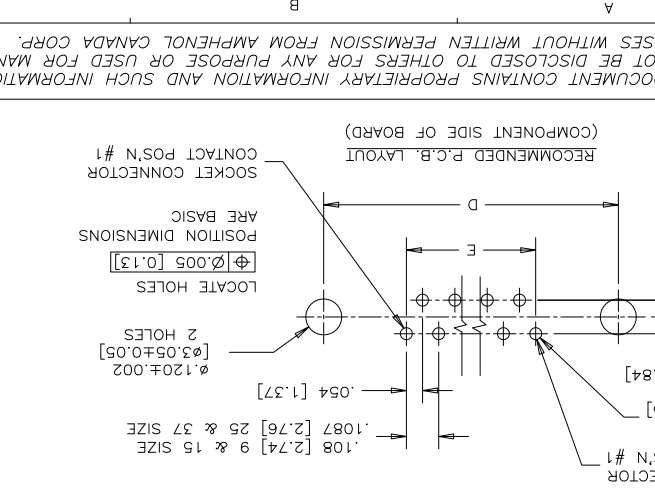
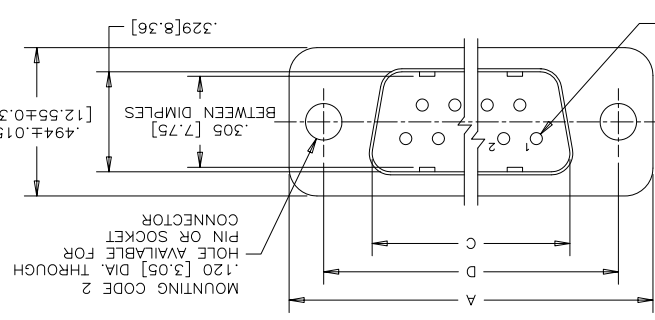
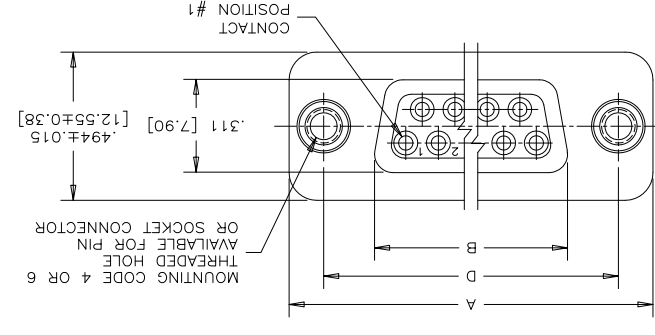
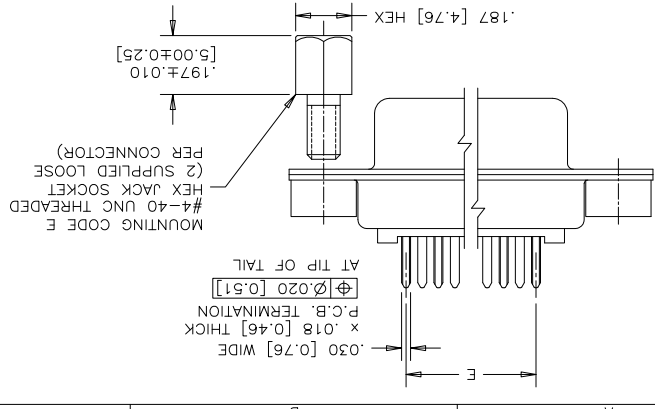
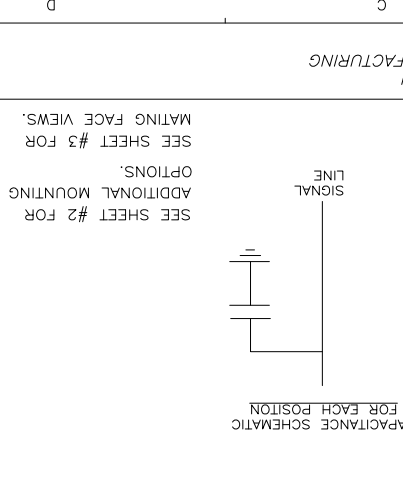
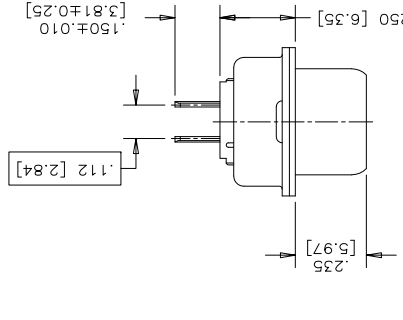
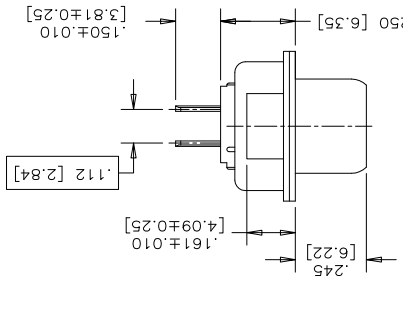
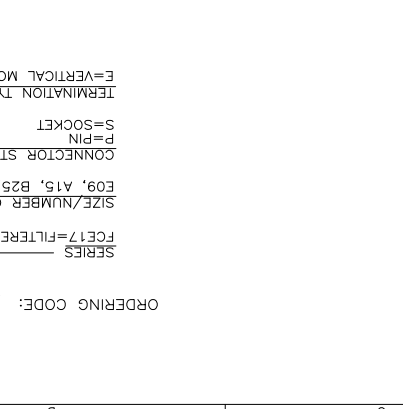
- NOTES:
1. MATERIALS: ALL MATERIALS ARE ROHS COMPLIANT.
  2. CONTACT RESISTANCE: 15 MILLIOHMS MAXIMUM
  3. INSULATION RESISTANCE: 3000 MEGOHMS MINIMUM
  4. CURRENT RATING: 5 AMPS MAXIMUM
  5. OPERATING TEMPERATURE: -40C TO 85C
  6. TOLERANCE UNLESS INDICATED OTHERWISE: ±0.05 [0.13]
- CONTACTS: PHOSPHOR BRONZE, PLATED WITH GOLD OVER 50µ" [1.27 MICRONS] MINIMUM NICKEL IN THE MATING AREA AND 100µ" [2.54 MICRONS] MINIMUM MATTE TIN ON THE TAILS
  - INSULATOR: ENGINEERING THERMOPLASTIC, GLASS REINFORCED, UL FLAMMABILITY RATING 94V-0, COLOUR: BLACK
  - BOARDLOCK: COPPER ALLOY, TIN PLATED
  - MOUNTING HARDWARE, STEEL OR COPPER ALLOY, TIN OR NICKEL PLATED.

SIZE	STYLE	SOCKET	PIN	SOCKET	PIN	SOCKET	PIN	SOCKET	PIN	SOCKET	PIN
E09	Pin	[30.81]	1.213	[0.38]	[0.13]	[0.13]	[0.13]	[0.13]	[0.13]	[0.13]	[0.13]
A15	Pin	[39.14]	1.541	[9.71]	[24.66]	.971	.994	[25.25]	1.312	[33.32]	[19.20]
B25	Pin	[53.04]	2.088	[3.04]	[38.38]	1.511	1.534	[38.96]	1.852	[47.04]	[33.12]
C37	Pin	[69.32]	2.729	[5.42]	[54.84]	2.159	2.182	[55.42]	2.500	[63.50]	[49.68]

DATE: M13/05  
DRAWN: K. LAMBIE  
DESIGNED: \_\_\_\_\_  
CHECKED: \_\_\_\_\_  
TITLE: \_\_\_\_\_  
AMPHENOL Canada Corp.

REV. DRAWING NO. P-FCE17-XXXXE-XXOX  
REV. F

REF. EAR #12744  
DIMENSIONS ARE IN INCHES [mm]  
SCALE 3/1  
WT. \_\_\_\_\_  
SURF. \_\_\_\_\_  
SHEET 1 OF 3



THIS DOCUMENT CONTAINS PROPRIETARY INFORMATION AND SUCH INFORMATION MAY NOT BE DISCLOSED TO OTHERS FOR ANY PURPOSE OR USED FOR MANUFACTURING PURPOSES WITHOUT WRITTEN PERMISSION FROM AMPHENOL CANADA CORP.

SEE SHEET #2 FOR ADDITIONAL MOUNTING OPTIONS.

SEE SHEET #3 FOR MATING FACE VIEWS.

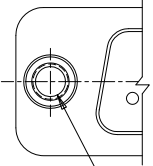
THIS DOCUMENT CONTAINS PROPRIETARY INFORMATION AND SUCH INFORMATION MAY NOT BE DISCLOSED TO OTHERS FOR ANY PURPOSE OR USED FOR MANUFACTURING PURPOSES WITHOUT WRITTEN PERMISSION FROM AMPHENOL CANADA CORP.



DATE	MAY13/05	DESIGNED	
CHECKED		TITLE	
L. E. APPRD.		FC17 SERIES FILTERED D-SUB CONNECTOR, PIN & SOCKET, VERTICAL MOUNT PCB TAIL, VARIOUS MOUNTING OPTIONS, ROHS COMPLIANT	
Q. A. APPRD.		DWG. APPRD.	
ENG. REL. NO.		DWG. REL. NO.	
REF. EAR #12744		REV.	F
DIMENSIONS ARE IN INCHES [mm]	03554	SCALE	3/1
WT.		SURF.	
SHEET 2 OF 3		REV. F	

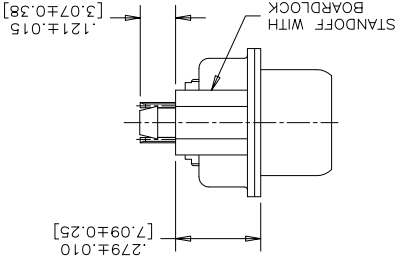
MOUNTING CODES A & J

PARTIAL FRONT VIEW



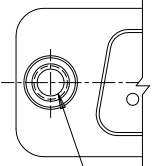
MOUNTING CODE A - #4-40 UNC  
MOUNTING CODE J - M3 x 0.5  
THREAD DEPTH .220 [5.59] MIN.

END VIEW



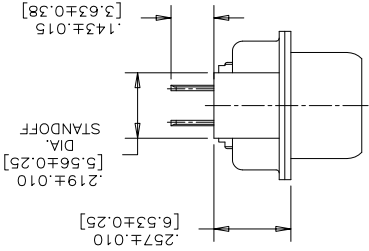
MOUNTING CODE 5

PARTIAL FRONT VIEW



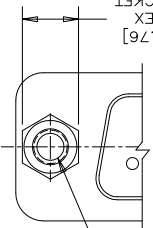
#4-40 UNC  
THREADED THROUGH HOLE

END VIEW



MOUNTING CODE 9

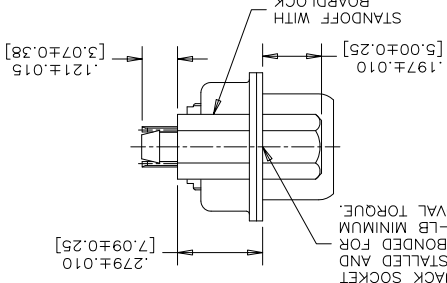
PARTIAL FRONT VIEW



#4-40 UNC  
THREAD X  
MINIMUM DEEP  
INSTALLED AND  
BONDED FOR  
5 IN-LB MINIMUM  
REMOVAL TORQUE.

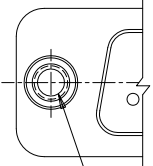
.187 [4.76]  
A/F HEX  
JACK SOCKET

END VIEW



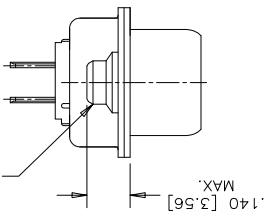
MOUNTING CODE 3

PARTIAL FRONT VIEW



#4-40 UNC  
SELF-LOCKING  
THREAD

END VIEW



VIEW FOR E09, A15 & B25  
SIZE: FOR C37 SIZE VIEW  
SEE MOUNTING CODE 4, SHEET 1.

ADDITIONAL MOUNTING OPTIONS AVAILABLE FOR PIN OR SOCKET CONNECTOR

REVISIONS	
REV	ECN, ERN NO. DATE APPRD.
F	PRODUCT DRAWING (EAR 14159) JAN31/13 K.L.

THIS DOCUMENT CONTAINS PROPRIETARY INFORMATION AND SUCH INFORMATION  
MAY NOT BE DISCLOSED TO OTHERS FOR ANY PURPOSE OR USED FOR MANUFACTURING  
PURPOSES WITHOUT WRITTEN PERMISSION FROM AMPHENOL CANADA CORP.



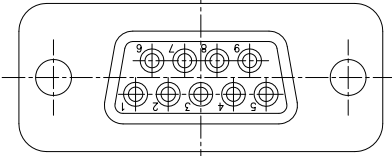
DATE	MAY13/05
DESIGNED	
CHECKED	
L. E. APPRD.	
Q. A. APPRD.	
DWG. APPRD.	
ENG. REL. NO.	
REF. EAR #12744	
DIMENSIONS ARE IN INCHES [mm]	03554
SCALE	3/1
WT.	
SURF.	
SHEET 3 OF 3	

Amphenol Canada Corp.

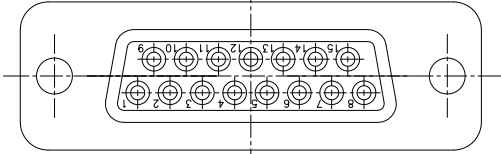
TITLE  
FC17 SERIES FILTERED D-SUB CONNECTOR,  
PIN & SOCKET, VERTICAL MOUNT PCB TAIL,  
VARIOUS MOUNTING OPTIONS, ROHS COMPLIANT

DWG. DRAWING NO. P-FC17-XXXXE-XXOX  
REV. F

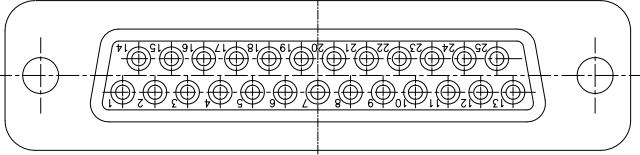
MATING FACE VIEWS  
SHOWING CONTACT POSITION NUMBERS



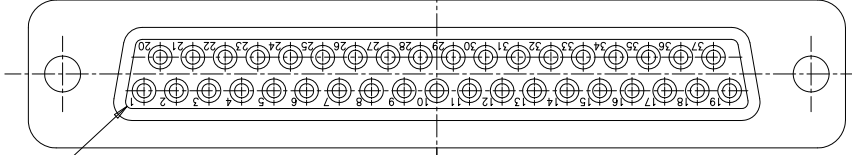
9 SIZE  
SOCKET



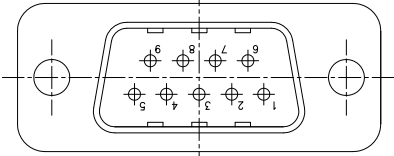
15 SIZE  
SOCKET



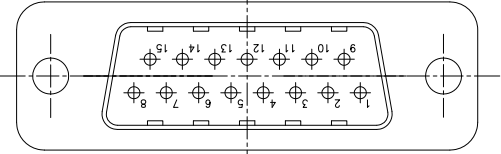
25 SIZE  
SOCKET



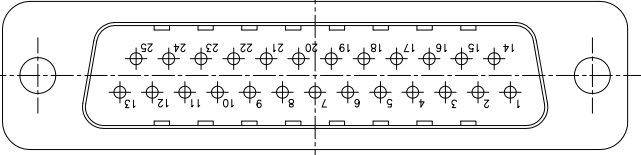
37 SIZE  
SOCKET



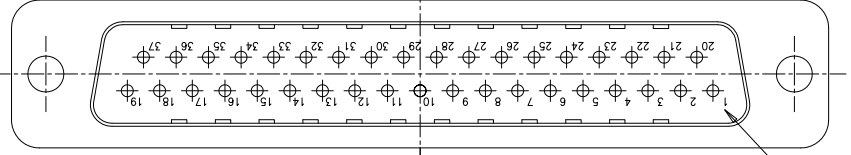
9 SIZE  
PIN



15 SIZE  
PIN



25 SIZE  
PIN



37 SIZE  
PIN

CONTACT  
POSITION #1

## X-ON Electronics

Largest Supplier of Electrical and Electronic Components

*Click to view similar products for [D-Sub Standard Connectors](#) category:*

*Click to view products by [Amphenol](#) manufacturer:*

Other Similar products are found below :

[DCM37S732N](#) [DAM15P500](#) [DEV09S364GTLF](#) [DEM09P032N](#) [DDM50P732N](#) [DAM15S332N](#) [173109-2218](#) [173109-2466](#) [173109-2436](#)  
[173109-2435](#) [56F706-005-LI](#) [56F711-015](#) [015-0341-000](#) [015-0372-008](#) [015-8544-011](#) [017041-0005](#) [020419-0104](#) [012-0515-000](#) [012-9507-](#)  
[034](#) [012-9507-114](#) [012-9534-001](#) [020745-0008](#) [609-25P](#) [M24308/2-23Z](#) [M243082310F](#) [M243082410F](#) [M243082411F](#) [M24308/4-21](#)  
[CT1A18-11PSA206](#) [CT1N36-5SC](#) [CT2-16S-17PS](#) [CT2-20-15PCAU](#) [CT2-24-12PS](#) [CT2-24-28PSF127A206](#) [CT2-32-9PC](#) [CT6F9767-14-4-](#)  
[14S-5PC](#) [CT6FA10SL-4PS](#) [CT7-18-10SC](#) [CT7-18-10SCAU](#) [CT7-18-12SCAU](#) [CT7-18-1PC](#) [CT7-18-1PCAU](#) [CT7-18-21SCAU](#) [M83513/01-](#)  
[FC](#) [M83723/76W24619 L/C](#) [M85049/48-3-2F](#) [69001-865](#) [6STD09PCM99B70X](#) [6STD09SCM99B30X](#) [6STD09SCT99S40X](#)